

TRUE COPY CERTIFICATE
 Parvez Jamadar have compared original drawings with this copy and found correct as per the original drawing.
 Date: 31/1/2019
 Parvez Jamadar
 ARCHITECT

2
6

STAMP OF APPROVAL
WING TYPE A, B, C, D

PARKING, TYPICAL FLOOR PLAN
AREA CALCULATIONS

AREA OF BLOCK (NET) = 48.81 X 11.87
 = 578.65 SQM

DEDUCTIONS:

- 1. 5.31 X 0.90 = 4.78 SQM
- 2. 2.70 X 0.90 X 11 NOS = 26.73 SQM
- 3. 4.11 X 1.68 X 4 NOS = 27.62 SQM
- 4. 2.11 X 1.68 X 4 NOS = 14.11 SQM
- 5. 2.13 X 1.68 X 4 NOS = 14.19 SQM
- 6. 2.13 X 1.68 X 4 NOS = 14.19 SQM
- 7. 3.96 X 1.20 X 2 NOS = 9.50 SQM
- 8. 4.11 X 2.24 X 2 NOS = 18.48 SQM
- 9. 0.81 X 1.88 X 1 NOS = 1.53 SQM
- 10. 2.79 X 3.26 = 9.09 SQM
- 11. 0.15 X 1.37 X 4 NOS = 0.83 SQM
- 12. 0.43 X 1.29 X 3 NOS = 1.69 SQM

NET BUILT UP AREA ON FIRST SECOND THIRD FLOOR
 = 386.43 SQM - 167.44 SQM
 = 218.99 SQM PER FLOOR

PERMISSIBLE BALCONY = 1.5 X 107.26 RM
 = 160.89 SQM

PROPOSED BALCONY = 5.34 (4.11 X 4) (2.28 X 11 NOS) + 2.13 X 4 NOS
 = 55.49 SQM

PERMISSIBLE BALCONY = 1.5 X 107.26 RM
 = 160.89 SQM

PROPOSED BALCONY = 5.34 (4.11 X 4) (2.28 X 11 NOS) + 2.13 X 4 NOS
 = 55.49 SQM

NET BUILT UP AREA ON FOURTH FLOOR
 = 386.43 SQM - 167.44 SQM
 = 218.99 SQM PER FLOOR

PERMISSIBLE BALCONY = 1.5 X 107.26 RM
 = 160.89 SQM

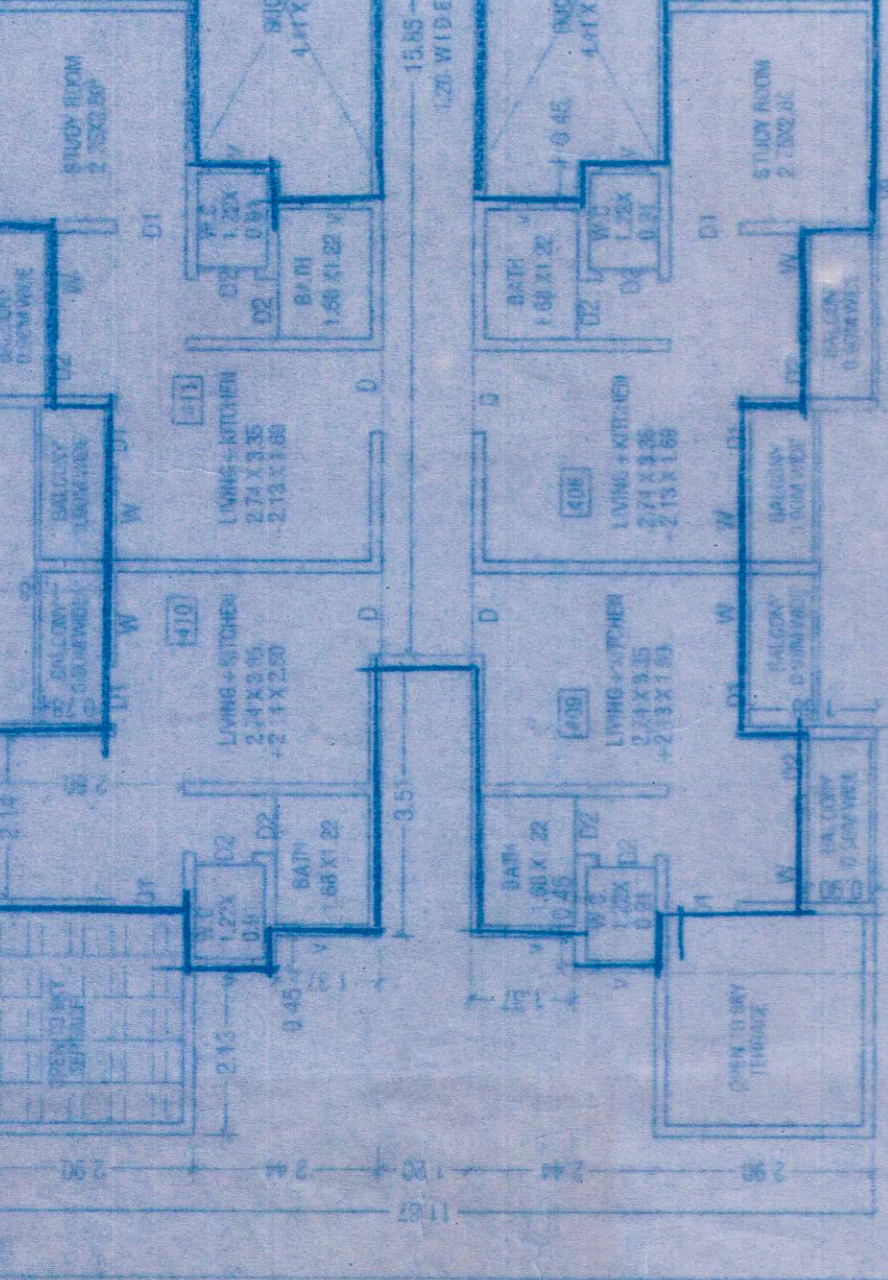
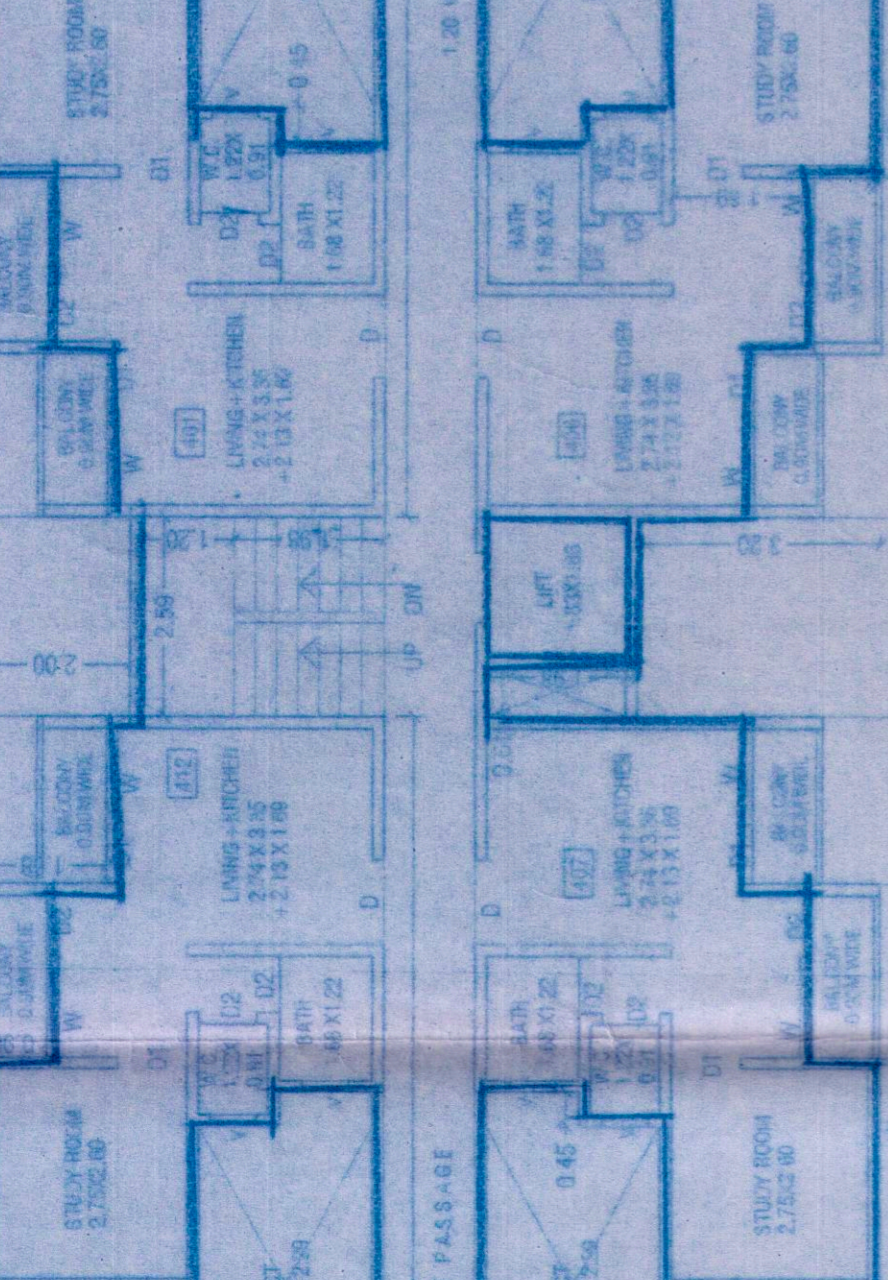
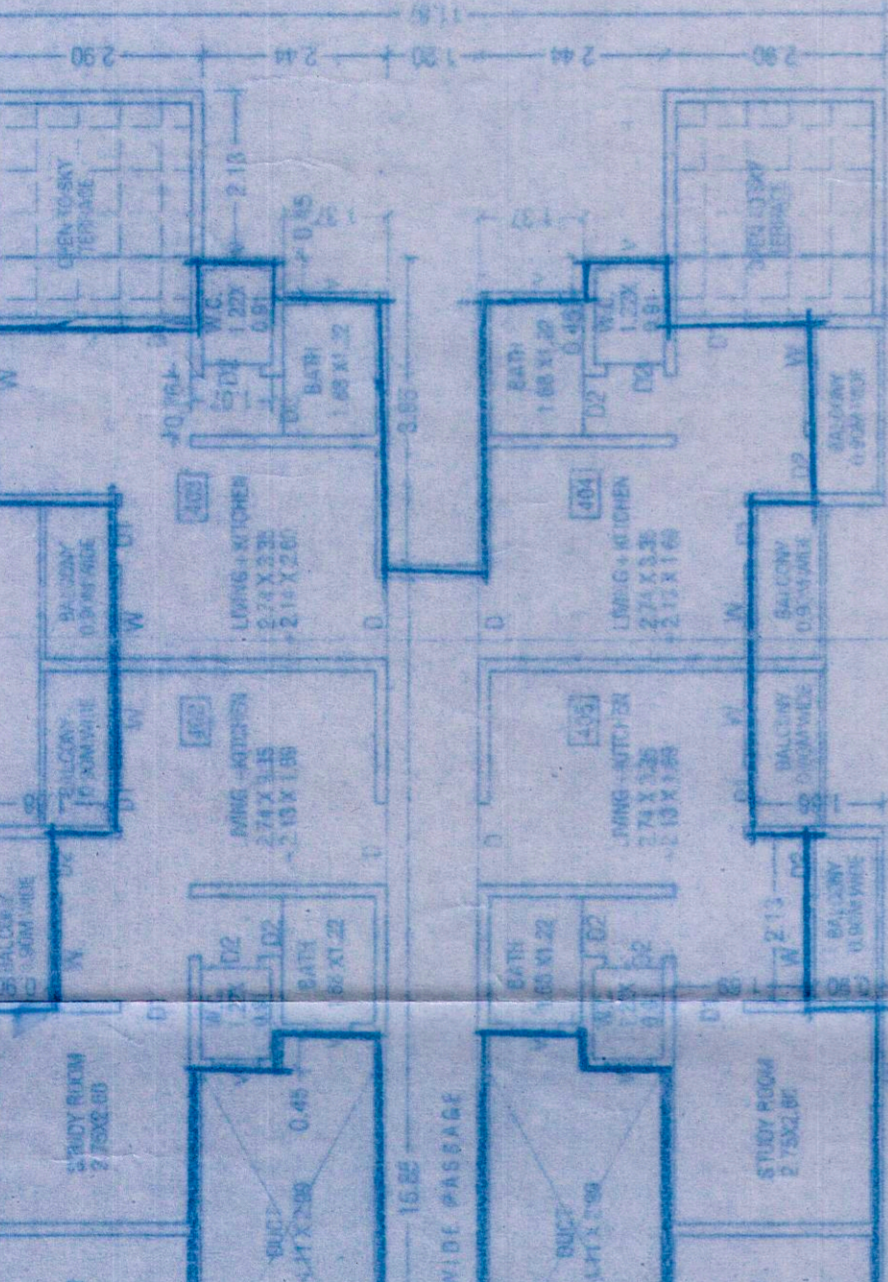
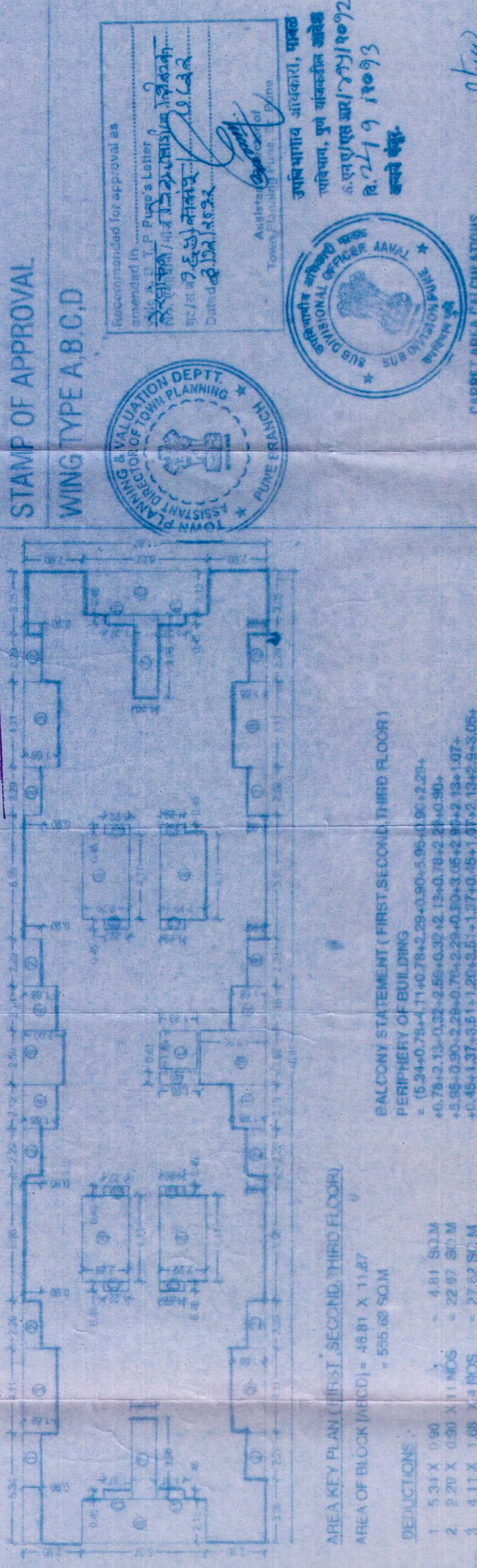


CHART (AREA CALCULATIONS)
 PLAN NO. 01 TO 142 AND 102
 PLAN NO. 101 TO 102

ROOM	SIZES	AREA IN SQM
WING	27.4 X 3.35	= 91.8 SQM
+ WIPDA	2.13 X 1.69	= 3.59 SQM
STUDY	2.73 X 2.69	= 7.35 SQM
BATH	1.88 X 1.29	= 2.43 SQM
KITCHEN	1.22 X 0.91	= 1.11 SQM
PASSAGE	0.78 X 1.07	= 0.84 SQM
D	0.68 X 0.15	= 0.10 SQM
D1	0.90 X 0.15	= 0.14 SQM
D2	0.75 X 0.15 X 1 NOS	= 0.11 SQM
OP	1.98 X 0.15	= 0.30 SQM
TOTAL GARRET	-	= 14.46 SQM

BALCONY STATEMENT (FIRST SECOND THIRD FLOOR)
 PERIMETRY OF BUILDING = (5.34+0.78+1.10+0.78) X 2 = 13.00 X 2 = 26.00
 4.78 X 2.28 = 10.90
 4.11 X 2.28 = 9.37
 2.13 X 2.28 = 4.86
 2.13 X 2.28 = 4.86
 4.11 X 2.28 = 9.37
 2.13 X 2.28 = 4.86
 2.13 X 2.28 = 4.86
 3.96 X 1.20 X 2 NOS = 9.50
 4.11 X 2.24 X 2 NOS = 18.48
 0.81 X 1.88 X 1 NOS = 1.53
 2.79 X 3.26 = 9.09
 0.15 X 1.37 X 4 NOS = 0.83
 0.43 X 1.29 X 3 NOS = 1.69
 = 55.49 SQM

BALCONY STATEMENT (FOURTH FLOOR)
 PERIMETRY OF BUILDING = (5.34+0.78+1.10+0.78) X 2 = 13.00 X 2 = 26.00
 4.78 X 2.28 = 10.90
 4.11 X 2.28 = 9.37
 2.13 X 2.28 = 4.86
 2.13 X 2.28 = 4.86
 4.11 X 2.28 = 9.37
 2.13 X 2.28 = 4.86
 2.13 X 2.28 = 4.86
 3.96 X 1.20 X 2 NOS = 9.50
 4.11 X 2.24 X 2 NOS = 18.48
 0.81 X 1.88 X 1 NOS = 1.53
 2.79 X 3.26 = 9.09
 0.15 X 1.37 X 4 NOS = 0.83
 0.43 X 1.29 X 3 NOS = 1.69
 = 55.49 SQM

NET BUILT UP AREA ON FIRST SECOND THIRD FLOOR
 = 386.43 SQM - 167.44 SQM
 = 218.99 SQM PER FLOOR

PERMISSIBLE BALCONY = 1.5 X 107.26 RM
 = 160.89 SQM

PROPOSED BALCONY = 5.34 (4.11 X 4) (2.28 X 11 NOS) + 2.13 X 4 NOS
 = 55.49 SQM

NET BUILT UP AREA ON FOURTH FLOOR
 = 386.43 SQM - 167.44 SQM
 = 218.99 SQM PER FLOOR

SCHEDULE OF OPENING:-

W = 1.60 X 1.20
 D = 1.00 X 2.10
 D1 = 0.90 X 2.10
 D2 = 0.75 X 2.10
 SLD = 1.80 X 2.10
 CP = 0.90 X 2.10

PERMITTED FOR APPROVAL
 MR. HARISH RUTARMAJ, SOLANKI

ASTRIX INFRASTRUCTURE
 SCALE: 1:100
 DATE: 31/01/2019
 APPROVED BY: PARVEZ J
 DEALT BY: LAXMAN RUTAR

PROPOSED GROUP HOUSING AT GAT NO. 165
AT DINGRAWADI TAL. SHRUR, DIST. PUNE.

OWNERS NAME & ADDRESS

PERMISSIBLE BALCONY = 1.5 X 107.26 RM
 = 160.89 SQM

PROPOSED BALCONY = 5.34 (4.11 X 4) (2.28 X 11 NOS) + 2.13 X 4 NOS
 = 55.49 SQM

NET BUILT UP AREA ON FOURTH FLOOR
 = 386.43 SQM - 167.44 SQM
 = 218.99 SQM PER FLOOR

PERMISSIBLE BALCONY = 1.5 X 107.26 RM
 = 160.89 SQM

TRUE COPY CERTIFICATE
 Parvez Jamadar have compared original drawings with this copy and found correct as per the original drawing.
 Date: 31/1/2019
 Parvez Jamadar
 ARCHITECT

STAMP OF APPROVAL
WING TYPE A, B, C, D

PARKING, TYPICAL FLOOR PLAN
AREA CALCULATIONS

AREA OF BLOCK (NET) = 48.81 X 11.87
 = 578.65 SQM

DEDUCTIONS:

- 1. 5.31 X 0.90 = 4.78 SQM
- 2. 2.70 X 0.90 X 11 NOS = 26.73 SQM
- 3. 4.11 X 1.68 X 4 NOS = 27.62 SQM
- 4. 2.11 X 1.68 X 4 NOS = 14.11 SQM
- 5. 2.13 X 1.68 X 4 NOS = 14.19 SQM
- 6. 2.13 X 1.68 X 4 NOS = 14.19 SQM
- 7. 3.96 X 1.20 X 2 NOS = 9.50 SQM
- 8. 4.11 X 2.24 X 2 NOS = 18.48 SQM
- 9. 0.81 X 1.88 X 1 NOS = 1.53 SQM
- 10. 2.79 X 3.26 = 9.09 SQM
- 11. 0.15 X 1.37 X 4 NOS = 0.83 SQM
- 12. 0.43 X 1.29 X 3 NOS = 1.69 SQM

NET BUILT UP AREA ON FIRST SECOND THIRD FLOOR
 = 386.43 SQM - 167.44 SQM
 = 218.99 SQM PER FLOOR

PERMISSIBLE BALCONY = 1.5 X 107.26 RM
 = 160.89 SQM

PROPOSED BALCONY = 5.34 (4.11 X 4) (2.28 X 11 NOS) + 2.13 X 4 NOS
 = 55.49 SQM

PERMISSIBLE BALCONY = 1.5 X 107.26 RM
 = 160.89 SQM

PROPOSED BALCONY = 5.34 (4.11 X 4) (2.28 X 11 NOS) + 2.13 X 4 NOS
 = 55.49 SQM

NET BUILT UP AREA ON FOURTH FLOOR
 = 386.43 SQM - 167.44 SQM
 = 218.99 SQM PER FLOOR

CHART (AREA CALCULATIONS)
 PLAN NO. 01 TO 142 AND 102
 PLAN NO. 101 TO 102

ROOM	SIZES	AREA IN SQM
WING	27.4 X 3.35	= 91.8 SQM
+ WIPDA	2.13 X 1.69	= 3.59 SQM
STUDY	2.73 X 2.69	= 7.35 SQM
BATH	1.88 X 1.29	= 2.43 SQM
KITCHEN	1.22 X 0.91	= 1.11 SQM
PASSAGE	0.78 X 1.07	= 0.84 SQM
D	0.68 X 0.15	= 0.10 SQM
D1	0.90 X 0.15	= 0.14 SQM
D2	0.75 X 0.15 X 1 NOS	= 0.11 SQM
OP	1.98 X 0.15	= 0.30 SQM
TOTAL GARRET	-	= 14.46 SQM

BALCONY STATEMENT (FIRST SECOND THIRD FLOOR)
 PERIMETRY OF BUILDING = (5.34+0.78+1.10+0.78) X 2 = 13.00 X 2 = 26.00
 4.78 X 2.28 = 10.90
 4.11 X 2.28 = 9.37
 2.13 X 2.28 = 4.86
 2.13 X 2.28 = 4.86
 4.11 X 2.28 = 9.37
 2.13 X 2.28 = 4.86
 2.13 X 2.28 = 4.86
 3.96 X 1.20 X 2 NOS = 9.50
 4.11 X 2.24 X 2 NOS = 18.48
 0.81 X 1.88 X 1 NOS = 1.53
 2.79 X 3.26 = 9.09
 0.15 X 1.37 X 4 NOS = 0.83
 0.43 X 1.29 X 3 NOS = 1.69
 = 55.49 SQM

BALCONY STATEMENT (FOURTH FLOOR)
 PERIMETRY OF BUILDING = (5.34+0.78+1.10+0.78) X 2 = 13.00 X 2 = 26.00
 4.78 X 2.28 = 10.90
 4.11 X 2.28 = 9.37
 2.13 X 2.28 = 4.86
 2.13 X 2.28 = 4.86
 4.11 X 2.28 = 9.37
 2.13 X 2.28 = 4.86
 2.13 X 2.28 = 4.86
 3.96 X 1.20 X 2 NOS = 9.50
 4.11 X 2.24 X 2 NOS = 18.48
 0.81 X 1.88 X 1 NOS = 1.53
 2.79 X 3.26 = 9.09
 0.15 X 1.37 X 4 NOS = 0.83
 0.43 X 1.29 X 3 NOS = 1.69
 = 55.49 SQM

NET BUILT UP AREA ON FIRST SECOND THIRD FLOOR
 = 386.43 SQM - 167.44 SQM
 = 218.99 SQM PER FLOOR

PERMISSIBLE BALCONY = 1.5 X 107.26 RM
 = 160.89 SQM

PROPOSED BALCONY = 5.34 (4.11 X 4) (2.28 X 11 NOS) + 2.13 X 4 NOS
 = 55.49 SQM

PERMISSIBLE BALCONY = 1.5 X 107.26 RM
 = 160.89 SQM

PROPOSED BALCONY = 5.34 (4.11 X 4) (2.28 X 11 NOS) + 2.13 X 4 NOS
 = 55.49 SQM

NET BUILT UP AREA ON FOURTH FLOOR
 = 386.43 SQM - 167.44 SQM
 = 218.99 SQM PER FLOOR

TRUE COPY CERTIFICATE
 Parvez Jamadar have compared original drawings with this copy and found correct as per the original drawing.
 Date: 31/1/2019
 Parvez Jamadar
 ARCHITECT

STAMP OF APPROVAL
WING TYPE A, B, C, D

PARKING, TYPICAL FLOOR PLAN
AREA CALCULATIONS

AREA OF BLOCK (NET) = 48.81 X 11.87
 = 578.65 SQM

DEDUCTIONS:

- 1. 5.31 X 0.90 = 4.78 SQM
- 2. 2.70 X 0.90 X 11 NOS = 26.73 SQM
- 3. 4.11 X 1.68 X 4 NOS = 27.62 SQM
- 4. 2.11 X 1.68 X 4 NOS = 14.11 SQM
- 5. 2.13 X 1.68 X 4 NOS = 14.19 SQM
- 6. 2.13 X 1.68 X 4 NOS = 14.19 SQM
- 7. 3.96 X 1.20 X 2 NOS = 9.50 SQM
- 8. 4.11 X 2.24 X 2 NOS = 18.48 SQM
- 9. 0.81 X 1.88 X 1 NOS = 1.53 SQM
- 10. 2.79 X 3.26 = 9.09 SQM
- 11. 0.15 X 1.37 X 4 NOS = 0.83 SQM
- 12. 0.43 X 1.29 X 3 NOS = 1.69 SQM

NET BUILT UP AREA ON FIRST SECOND THIRD FLOOR
 = 386.43 SQM - 167.44 SQM
 = 218.99 SQM PER FLOOR

PERMISSIBLE BALCONY = 1.5 X 107.26 RM
 = 160.89 SQM

PROPOSED BALCONY = 5.34 (4.11 X 4) (2.28 X 11 NOS) + 2.13 X 4 NOS
 = 55.49 SQM

PERMISSIBLE BALCONY = 1.5 X 107.26 RM
 = 160.89 SQM

PROPOSED BALCONY = 5.34 (4.11 X 4) (2.28 X 11 NOS) + 2.13 X 4 NOS
 = 55.49 SQM

NET BUILT UP AREA ON FOURTH FLOOR
 = 386.43 SQM - 167.44 SQM
 = 218.99 SQM PER FLOOR

TRUE COPY CERTIFICATE
 Parvez Jamadar have compared original drawings with this copy and found correct as per the original drawing.
 Date: 31/1/2019
 Parvez Jamadar
 ARCHITECT

STAMP OF APPROVAL
WING TYPE A, B, C, D

PARKING, TYPICAL FLOOR PLAN
AREA CALCULATIONS

AREA OF BLOCK (NET) = 48.81 X 11.87
 = 578.65 SQM

DEDUCTIONS:

- 1. 5.31 X 0.90 = 4.78 SQM
- 2. 2.70 X 0.90 X 11 NOS = 26.73 SQM
- 3. 4.11 X 1.68 X 4 NOS = 27.62 SQM
- 4. 2.11 X 1.68 X 4 NOS = 14.11 SQM
- 5. 2.13 X 1.68 X 4 NOS = 14.19 SQM
- 6. 2.13 X 1.68 X 4 NOS = 14.19 SQM
- 7. 3.96 X 1.20 X 2 NOS = 9.50 SQM
- 8. 4.11 X 2.24 X 2 NOS = 18.48 SQM
- 9. 0.81 X 1.88 X 1 NOS = 1.53 SQM
- 10. 2.79 X 3.26 = 9.09 SQM
- 11. 0.15 X 1.37 X 4 NOS = 0.83 SQM
- 12. 0.43 X 1.29 X 3 NOS = 1.69 SQM

NET BUILT UP AREA ON FIRST SECOND THIRD FLOOR
 = 386.43 SQM - 167.44 SQM
 = 218.99 SQM PER FLOOR

PERMISSIBLE BALCONY = 1.5 X 107.26 RM
 = 160.89 SQM

PROPOSED BALCONY = 5.34 (4.11 X 4) (2.28 X 11 NOS) + 2.13 X 4 NOS
 = 55.49 SQM

PERMISSIBLE BALCONY = 1.5 X 107.26 RM
 = 160.89 SQM

PROPOSED BALCONY = 5.34 (4.11 X 4) (2.28 X 11 NOS) + 2.13 X 4 NOS
 = 55.49 SQM

NET BUILT UP AREA ON FOURTH FLOOR
 = 386.43 SQM - 167.44 SQM
 = 218.99 SQM PER FLOOR