

CONTENTS OF SHEET

8TH FLOOR PLAN WITH AREA LINE DIAGRAM & CALCULATION ETC.

SCALE APPROVED L & S  
PLANNING AND ARCHITECTURE  
14/11/2014  
14/11/2014  
14/11/2014



SCHEDULE OF DOOR & WINDOW

NO.	TYPE	SIZE	QUANTITY	DESCRIPTION
1	D	1.20 x 2.10	1	SMALL BATTERY OPERATED SLIDING DOOR
2	D	1.20 x 2.10	1	SMALL BATTERY OPERATED SLIDING DOOR
3	D	1.20 x 2.10	1	SMALL BATTERY OPERATED SLIDING DOOR
4	D	1.20 x 2.10	1	SMALL BATTERY OPERATED SLIDING DOOR
5	W	2.10 x 1.20	1	1 PANEL SLIDING ALUMINIUM WINDOW
6	W	1.20 x 1.20	1	2 PANEL SLIDING ALUMINIUM WINDOW
7	W	1.20 x 1.20	1	2 PANEL SLIDING ALUMINIUM WINDOW
8	W	1.20 x 1.20	1	2 PANEL SLIDING ALUMINIUM WINDOW
9	W	1.20 x 1.20	1	2 PANEL SLIDING ALUMINIUM WINDOW
10	W	1.20 x 1.20	1	2 PANEL SLIDING ALUMINIUM WINDOW
11	W	1.20 x 1.20	1	2 PANEL SLIDING ALUMINIUM WINDOW
12	W	1.20 x 1.20	1	2 PANEL SLIDING ALUMINIUM WINDOW
13	W	1.20 x 1.20	1	2 PANEL SLIDING ALUMINIUM WINDOW
14	W	1.20 x 1.20	1	2 PANEL SLIDING ALUMINIUM WINDOW
15	Y	1.20 x 1.20	1	GLAZED INSULATOR

DESCRIPTION OF PROPOSAL

PROPOSED INTEGRATED TOWNSHIP PROJECT ON PLOT BEARING...  
VILLAGE - SHIMBOLI BEARING S 102° 01' 43.00" E 45.00' AS 48  
475.00' S 71.00' E 54.00' AS 54.00' S 71.00' E 54.00' AS 54.00'  
750.00' S 75.00' E 54.00' AS 54.00' S 75.00' E 54.00' AS 54.00'  
50.00' S 84.00' E 54.00' AS 54.00' S 84.00' E 54.00' AS 54.00'  
120.00' S 100.00' E 54.00' AS 54.00' S 100.00' E 54.00' AS 54.00'  
140.00' S 100.00' E 54.00' AS 54.00' S 100.00' E 54.00' AS 54.00'  
150.00' S 100.00' E 54.00' AS 54.00' S 100.00' E 54.00' AS 54.00'  
160.00' S 100.00' E 54.00' AS 54.00' S 100.00' E 54.00' AS 54.00'  
170.00' S 100.00' E 54.00' AS 54.00' S 100.00' E 54.00' AS 54.00'  
180.00' S 100.00' E 54.00' AS 54.00' S 100.00' E 54.00' AS 54.00'  
190.00' S 100.00' E 54.00' AS 54.00' S 100.00' E 54.00' AS 54.00'  
200.00' S 100.00' E 54.00' AS 54.00' S 100.00' E 54.00' AS 54.00'  
210.00' S 100.00' E 54.00' AS 54.00' S 100.00' E 54.00' AS 54.00'  
220.00' S 100.00' E 54.00' AS 54.00' S 100.00' E 54.00' AS 54.00'  
230.00' S 100.00' E 54.00' AS 54.00' S 100.00' E 54.00' AS 54.00'  
240.00' S 100.00' E 54.00' AS 54.00' S 100.00' E 54.00' AS 54.00'  
250.00' S 100.00' E 54.00' AS 54.00' S 100.00' E 54.00' AS 54.00'  
260.00' S 100.00' E 54.00' AS 54.00' S 100.00' E 54.00' AS 54.00'  
270.00' S 100.00' E 54.00' AS 54.00' S 100.00' E 54.00' AS 54.00'  
280.00' S 100.00' E 54.00' AS 54.00' S 100.00' E 54.00' AS 54.00'  
290.00' S 100.00' E 54.00' AS 54.00' S 100.00' E 54.00' AS 54.00'  
300.00' S 100.00' E 54.00' AS 54.00' S 100.00' E 54.00' AS 54.00'  
310.00' S 100.00' E 54.00' AS 54.00' S 100.00' E 54.00' AS 54.00'  
320.00' S 100.00' E 54.00' AS 54.00' S 100.00' E 54.00' AS 54.00'

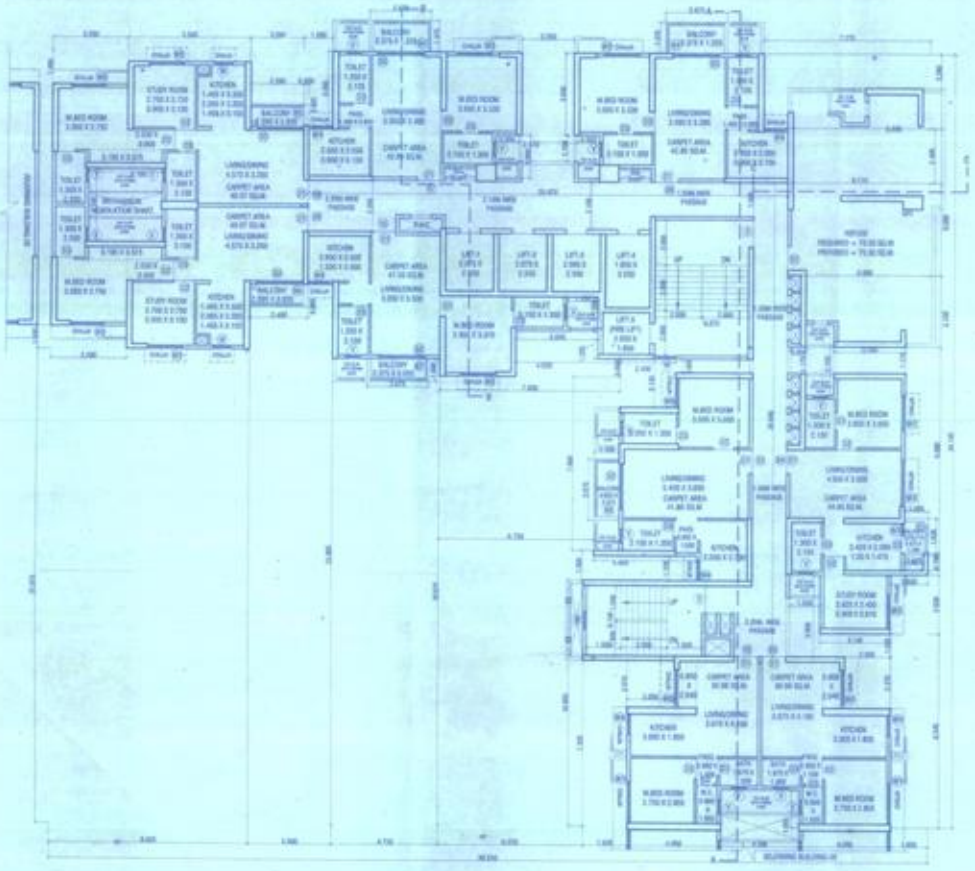
NAME AND ADDRESS OF OWNER / P.O.A.

OWNER:  
M/S. PUNJAB RESIDENCY PVT. LTD.  
NEAR TMC, ALMUDA ROAD,  
PANCHAPPAHADI, THANE (W), INDIA  
PIN - 401 001, TEL: 022-2557 4700, FAX: 022-2557 4700  
E-MAIL: - info@punjabresidency.com

SIGNATURE OF CONSULTANT ARCHITECT  
SIGNATURE OF ARCHITECT

ARCHITECTS

**Seahub**  
ARCHITECTS  
2ND FLOOR, NAGDIKATRA, A WING,  
NEAR TMC, ALMUDA ROAD,  
PANCHAPPAHADI, THANE (W), INDIA  
PHONE - 2557 4701, TELE FAX - 2557 4700  
E-MAIL - info@seahubarchitects.com



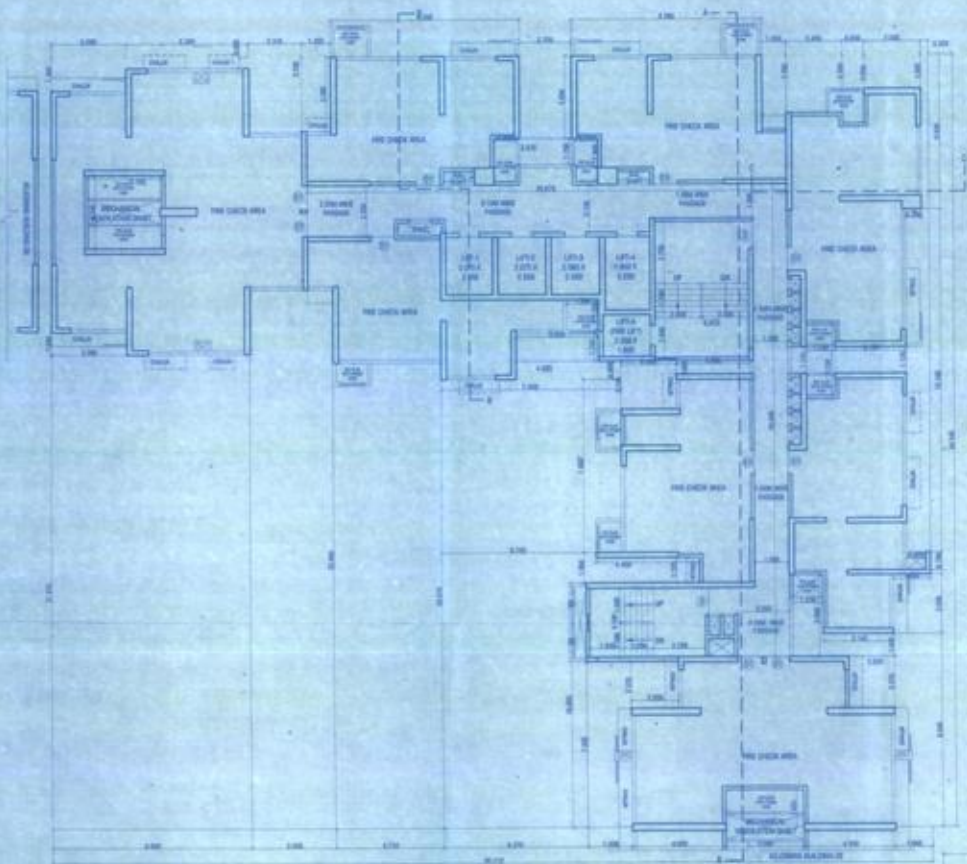
AREA CALCULATION OF 8TH REFUSE FLOOR PLAN  
SCALE: 1:100

NO.	AREA	PERCENTAGE
1	1.200 x 1.200 = 1.44	0.08
2	1.200 x 1.200 = 1.44	0.08
3	1.200 x 1.200 = 1.44	0.08
4	1.200 x 1.200 = 1.44	0.08
5	1.200 x 1.200 = 1.44	0.08
6	1.200 x 1.200 = 1.44	0.08
7	1.200 x 1.200 = 1.44	0.08
8	1.200 x 1.200 = 1.44	0.08
9	1.200 x 1.200 = 1.44	0.08
10	1.200 x 1.200 = 1.44	0.08
11	1.200 x 1.200 = 1.44	0.08
12	1.200 x 1.200 = 1.44	0.08
13	1.200 x 1.200 = 1.44	0.08
14	1.200 x 1.200 = 1.44	0.08
15	1.200 x 1.200 = 1.44	0.08
16	1.200 x 1.200 = 1.44	0.08
17	1.200 x 1.200 = 1.44	0.08
18	1.200 x 1.200 = 1.44	0.08
19	1.200 x 1.200 = 1.44	0.08
20	1.200 x 1.200 = 1.44	0.08
21	1.200 x 1.200 = 1.44	0.08
22	1.200 x 1.200 = 1.44	0.08
23	1.200 x 1.200 = 1.44	0.08
24	1.200 x 1.200 = 1.44	0.08
25	1.200 x 1.200 = 1.44	0.08
26	1.200 x 1.200 = 1.44	0.08
27	1.200 x 1.200 = 1.44	0.08
28	1.200 x 1.200 = 1.44	0.08
29	1.200 x 1.200 = 1.44	0.08
30	1.200 x 1.200 = 1.44	0.08
31	1.200 x 1.200 = 1.44	0.08
32	1.200 x 1.200 = 1.44	0.08
33	1.200 x 1.200 = 1.44	0.08
34	1.200 x 1.200 = 1.44	0.08
35	1.200 x 1.200 = 1.44	0.08
36	1.200 x 1.200 = 1.44	0.08
37	1.200 x 1.200 = 1.44	0.08
38	1.200 x 1.200 = 1.44	0.08
39	1.200 x 1.200 = 1.44	0.08
40	1.200 x 1.200 = 1.44	0.08
41	1.200 x 1.200 = 1.44	0.08
42	1.200 x 1.200 = 1.44	0.08
43	1.200 x 1.200 = 1.44	0.08
44	1.200 x 1.200 = 1.44	0.08
45	1.200 x 1.200 = 1.44	0.08
46	1.200 x 1.200 = 1.44	0.08
47	1.200 x 1.200 = 1.44	0.08
48	1.200 x 1.200 = 1.44	0.08
49	1.200 x 1.200 = 1.44	0.08
50	1.200 x 1.200 = 1.44	0.08
51	1.200 x 1.200 = 1.44	0.08
52	1.200 x 1.200 = 1.44	0.08
53	1.200 x 1.200 = 1.44	0.08
54	1.200 x 1.200 = 1.44	0.08
55	1.200 x 1.200 = 1.44	0.08
56	1.200 x 1.200 = 1.44	0.08
57	1.200 x 1.200 = 1.44	0.08
58	1.200 x 1.200 = 1.44	0.08
59	1.200 x 1.200 = 1.44	0.08
60	1.200 x 1.200 = 1.44	0.08
61	1.200 x 1.200 = 1.44	0.08
62	1.200 x 1.200 = 1.44	0.08
63	1.200 x 1.200 = 1.44	0.08
64	1.200 x 1.200 = 1.44	0.08
65	1.200 x 1.200 = 1.44	0.08
66	1.200 x 1.200 = 1.44	0.08
67	1.200 x 1.200 = 1.44	0.08
68	1.200 x 1.200 = 1.44	0.08
69	1.200 x 1.200 = 1.44	0.08
70	1.200 x 1.200 = 1.44	0.08
71	1.200 x 1.200 = 1.44	0.08
72	1.200 x 1.200 = 1.44	0.08
73	1.200 x 1.200 = 1.44	0.08
74	1.200 x 1.200 = 1.44	0.08
75	1.200 x 1.200 = 1.44	0.08
76	1.200 x 1.200 = 1.44	0.08
77	1.200 x 1.200 = 1.44	0.08
78	1.200 x 1.200 = 1.44	0.08
79	1.200 x 1.200 = 1.44	0.08
80	1.200 x 1.200 = 1.44	0.08
81	1.200 x 1.200 = 1.44	0.08
82	1.200 x 1.200 = 1.44	0.08
83	1.200 x 1.200 = 1.44	0.08
84	1.200 x 1.200 = 1.44	0.08
85	1.200 x 1.200 = 1.44	0.08
86	1.200 x 1.200 = 1.44	0.08
87	1.200 x 1.200 = 1.44	0.08
88	1.200 x 1.200 = 1.44	0.08
89	1.200 x 1.200 = 1.44	0.08
90	1.200 x 1.200 = 1.44	0.08
91	1.200 x 1.200 = 1.44	0.08
92	1.200 x 1.200 = 1.44	0.08
93	1.200 x 1.200 = 1.44	0.08
94	1.200 x 1.200 = 1.44	0.08
95	1.200 x 1.200 = 1.44	0.08
96	1.200 x 1.200 = 1.44	0.08
97	1.200 x 1.200 = 1.44	0.08
98	1.200 x 1.200 = 1.44	0.08
99	1.200 x 1.200 = 1.44	0.08
100	1.200 x 1.200 = 1.44	0.08
TOTAL AREA	176.00	100.00

STANDARD AREA CALCULATION OF 8TH REFUSE FLOOR PLAN  
SCALE: 1:100

NO.	AREA	PERCENTAGE
1	1.200 x 1.200 = 1.44	0.08
2	1.200 x 1.200 = 1.44	0.08
3	1.200 x 1.200 = 1.44	0.08
4	1.200 x 1.200 = 1.44	0.08
5	1.200 x 1.200 = 1.44	0.08
6	1.200 x 1.200 = 1.44	0.08
7	1.200 x 1.200 = 1.44	0.08
8	1.200 x 1.200 = 1.44	0.08
9	1.200 x 1.200 = 1.44	0.08
10	1.200 x 1.200 = 1.44	0.08
11	1.200 x 1.200 = 1.44	0.08
12	1.200 x 1.200 = 1.44	0.08
13	1.200 x 1.200 = 1.44	0.08
14	1.200 x 1.200 = 1.44	0.08
15	1.200 x 1.200 = 1.44	0.08
16	1.200 x 1.200 = 1.44	0.08
17	1.200 x 1.200 = 1.44	0.08
18	1.200 x 1.200 = 1.44	0.08
19	1.200 x 1.200 = 1.44	0.08
20	1.200 x 1.200 = 1.44	0.08
21	1.200 x 1.200 = 1.44	0.08
22	1.200 x 1.200 = 1.44	0.08
23	1.200 x 1.200 = 1.44	0.08
24	1.200 x 1.200 = 1.44	0.08
25	1.200 x 1.200 = 1.44	0.08
26	1.200 x 1.200 = 1.44	0.08
27	1.200 x 1.200 = 1.44	0.08
28	1.200 x 1.200 = 1.44	0.08
29	1.200 x 1.200 = 1.44	0.08
30	1.200 x 1.200 = 1.44	0.08
31	1.200 x 1.200 = 1.44	0.08
32	1.200 x 1.200 = 1.44	0.08
33	1.200 x 1.200 = 1.44	0.08
34	1.200 x 1.200 = 1.44	0.08
35	1.200 x 1.200 = 1.44	0.08
36	1.200 x 1.200 = 1.44	0.08
37	1.200 x 1.200 = 1.44	0.08
38	1.200 x 1.200 = 1.44	0.08
39	1.200 x 1.200 = 1.44	0.08
40	1.200 x 1.200 = 1.44	0.08
41	1.200 x 1.200 = 1.44	0.08
42	1.200 x 1.200 = 1.44	0.08
43	1.200 x 1.200 = 1.44	0.08
44	1.200 x 1.200 = 1.44	0.08
45	1.200 x 1.200 = 1.44	0.08
46	1.200 x 1.200 = 1.44	0.08
47	1.200 x 1.200 = 1.44	0.08
48	1.200 x 1.200 = 1.44	0.08
49	1.200 x 1.200 = 1.44	0.08
50	1.200 x 1.200 = 1.44	0.08
51	1.200 x 1.200 = 1.44	0.08
52	1.200 x 1.200 = 1.44	0.08
53	1.200 x 1.200 = 1.44	0.08
54	1.200 x 1.200 = 1.44	0.08
55	1.200 x 1.200 = 1.44	0.08
56	1.200 x 1.200 = 1.44	0.08
57	1.200 x 1.200 = 1.44	0.08
58	1.200 x 1.200 = 1.44	0.08
59	1.200 x 1.200 = 1.44	0.08
60	1.200 x 1.200 = 1.44	0.08
61	1.200 x 1.200 = 1.44	0.08
62	1.200 x 1.200 = 1.44	0.08
63	1.200 x 1.200 = 1.44	0.08
64	1.200 x 1.200 = 1.44	0.08
65	1.200 x 1.200 = 1.44	0.08
66	1.200 x 1.200 = 1.44	0.08
67	1.200 x 1.200 = 1.44	0.08
68	1.200 x 1.200 = 1.44	0.08
69	1.200 x 1.200 = 1.44	0.08
70	1.200 x 1.200 = 1.44	0.08
71	1.200 x 1.200 = 1.44	0.08
72	1.200 x 1.200 = 1.44	0.08
73	1.200 x 1.200 = 1.44	0.08
74	1.200 x 1.200 = 1.44	0.08
75	1.200 x 1.200 = 1.44	0.08
76	1.200 x 1.200 = 1.44	0.08
77	1.200 x 1.200 = 1.44	0.08
78	1.200 x 1.200 = 1.44	0.08
79	1.200 x 1.200 = 1.44	0.08





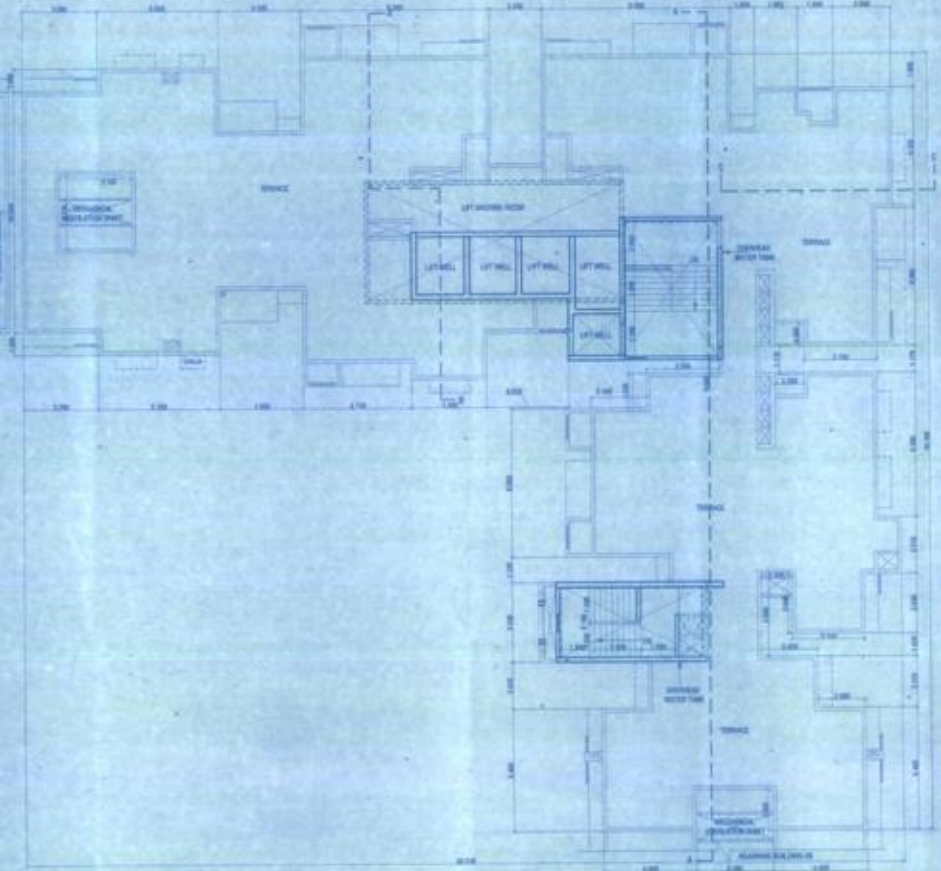
AREA CALCULATION OF TYPICAL ONE TO TWO OF THE  
 TO CHECK FLOOR TO CALCULATE THE AREA WITH IN  
 AREA A WITH IN AREA B FLOOR PLAN  
 BLOCK OF FLOOR PLAN - 10000 SQ.M  
 TOTAL AREA WITH IN - 10000 SQ.M

NO.	AREA	AREA	AREA
1	1.000 X 1.000	=	1.00
2	1.000 X 1.000	=	1.00
3	1.000 X 1.000	=	1.00
4	1.000 X 1.000	=	1.00
5	1.000 X 1.000	=	1.00
6	1.000 X 1.000	=	1.00
7	1.000 X 1.000	=	1.00
8	1.000 X 1.000	=	1.00
9	1.000 X 1.000	=	1.00
10	1.000 X 1.000	=	1.00
11	1.000 X 1.000	=	1.00
12	1.000 X 1.000	=	1.00
13	1.000 X 1.000	=	1.00
14	1.000 X 1.000	=	1.00
15	1.000 X 1.000	=	1.00
16	1.000 X 1.000	=	1.00
17	1.000 X 1.000	=	1.00
18	1.000 X 1.000	=	1.00
19	1.000 X 1.000	=	1.00
20	1.000 X 1.000	=	1.00
21	1.000 X 1.000	=	1.00
22	1.000 X 1.000	=	1.00
23	1.000 X 1.000	=	1.00
24	1.000 X 1.000	=	1.00
25	1.000 X 1.000	=	1.00
26	1.000 X 1.000	=	1.00
27	1.000 X 1.000	=	1.00
28	1.000 X 1.000	=	1.00
29	1.000 X 1.000	=	1.00
30	1.000 X 1.000	=	1.00
31	1.000 X 1.000	=	1.00
32	1.000 X 1.000	=	1.00
33	1.000 X 1.000	=	1.00
34	1.000 X 1.000	=	1.00
35	1.000 X 1.000	=	1.00
36	1.000 X 1.000	=	1.00
37	1.000 X 1.000	=	1.00
38	1.000 X 1.000	=	1.00
39	1.000 X 1.000	=	1.00
40	1.000 X 1.000	=	1.00
41	1.000 X 1.000	=	1.00
42	1.000 X 1.000	=	1.00
43	1.000 X 1.000	=	1.00
44	1.000 X 1.000	=	1.00
45	1.000 X 1.000	=	1.00
46	1.000 X 1.000	=	1.00
47	1.000 X 1.000	=	1.00
48	1.000 X 1.000	=	1.00
49	1.000 X 1.000	=	1.00
50	1.000 X 1.000	=	1.00
51	1.000 X 1.000	=	1.00
52	1.000 X 1.000	=	1.00
53	1.000 X 1.000	=	1.00
54	1.000 X 1.000	=	1.00
55	1.000 X 1.000	=	1.00
56	1.000 X 1.000	=	1.00
57	1.000 X 1.000	=	1.00
58	1.000 X 1.000	=	1.00
59	1.000 X 1.000	=	1.00
60	1.000 X 1.000	=	1.00
61	1.000 X 1.000	=	1.00
62	1.000 X 1.000	=	1.00
63	1.000 X 1.000	=	1.00
64	1.000 X 1.000	=	1.00
65	1.000 X 1.000	=	1.00
66	1.000 X 1.000	=	1.00
67	1.000 X 1.000	=	1.00
68	1.000 X 1.000	=	1.00
69	1.000 X 1.000	=	1.00
70	1.000 X 1.000	=	1.00
71	1.000 X 1.000	=	1.00
72	1.000 X 1.000	=	1.00
73	1.000 X 1.000	=	1.00
74	1.000 X 1.000	=	1.00
75	1.000 X 1.000	=	1.00
76	1.000 X 1.000	=	1.00
77	1.000 X 1.000	=	1.00
78	1.000 X 1.000	=	1.00
79	1.000 X 1.000	=	1.00
80	1.000 X 1.000	=	1.00
81	1.000 X 1.000	=	1.00
82	1.000 X 1.000	=	1.00
83	1.000 X 1.000	=	1.00
84	1.000 X 1.000	=	1.00
85	1.000 X 1.000	=	1.00
86	1.000 X 1.000	=	1.00
87	1.000 X 1.000	=	1.00
88	1.000 X 1.000	=	1.00
89	1.000 X 1.000	=	1.00
90	1.000 X 1.000	=	1.00
91	1.000 X 1.000	=	1.00
92	1.000 X 1.000	=	1.00
93	1.000 X 1.000	=	1.00
94	1.000 X 1.000	=	1.00
95	1.000 X 1.000	=	1.00
96	1.000 X 1.000	=	1.00
97	1.000 X 1.000	=	1.00
98	1.000 X 1.000	=	1.00
99	1.000 X 1.000	=	1.00
100	1.000 X 1.000	=	1.00



AREA CALCULATION OF TYPICAL ONE TO TWO OF THE  
 TO CHECK FLOOR TO CALCULATE THE AREA WITH IN  
 AREA A WITH IN AREA B FLOOR PLAN  
 BLOCK OF FLOOR PLAN - 10000 SQ.M  
 TOTAL AREA WITH IN - 10000 SQ.M

NO.	AREA	AREA	AREA
1	1.000 X 1.000	=	1.00
2	1.000 X 1.000	=	1.00
3	1.000 X 1.000	=	1.00
4	1.000 X 1.000	=	1.00
5	1.000 X 1.000	=	1.00
6	1.000 X 1.000	=	1.00
7	1.000 X 1.000	=	1.00
8	1.000 X 1.000	=	1.00
9	1.000 X 1.000	=	1.00
10	1.000 X 1.000	=	1.00
11	1.000 X 1.000	=	1.00
12	1.000 X 1.000	=	1.00
13	1.000 X 1.000	=	1.00
14	1.000 X 1.000	=	1.00
15	1.000 X 1.000	=	1.00
16	1.000 X 1.000	=	1.00
17	1.000 X 1.000	=	1.00
18	1.000 X 1.000	=	1.00
19	1.000 X 1.000	=	1.00
20	1.000 X 1.000	=	1.00
21	1.000 X 1.000	=	1.00
22	1.000 X 1.000	=	1.00
23	1.000 X 1.000	=	1.00
24	1.000 X 1.000	=	1.00
25	1.000 X 1.000	=	1.00
26	1.000 X 1.000	=	1.00
27	1.000 X 1.000	=	1.00
28	1.000 X 1.000	=	1.00
29	1.000 X 1.000	=	1.00
30	1.000 X 1.000	=	1.00
31	1.000 X 1.000	=	1.00
32	1.000 X 1.000	=	1.00
33	1.000 X 1.000	=	1.00
34	1.000 X 1.000	=	1.00
35	1.000 X 1.000	=	1.00
36	1.000 X 1.000	=	1.00
37	1.000 X 1.000	=	1.00
38	1.000 X 1.000	=	1.00
39	1.000 X 1.000	=	1.00
40	1.000 X 1.000	=	1.00
41	1.000 X 1.000	=	1.00
42	1.000 X 1.000	=	1.00
43	1.000 X 1.000	=	1.00
44	1.000 X 1.000	=	1.00
45	1.000 X 1.000	=	1.00
46	1.000 X 1.000	=	1.00
47	1.000 X 1.000	=	1.00
48	1.000 X 1.000	=	1.00
49	1.000 X 1.000	=	1.00
50	1.000 X 1.000	=	1.00
51	1.000 X 1.000	=	1.00
52	1.000 X 1.000	=	1.00
53	1.000 X 1.000	=	1.00
54	1.000 X 1.000	=	1.00
55	1.000 X 1.000	=	1.00
56	1.000 X 1.000	=	1.00
57	1.000 X 1.000	=	1.00
58	1.000 X 1.000	=	1.00
59	1.000 X 1.000	=	1.00
60	1.000 X 1.000	=	1.00
61	1.000 X 1.000	=	1.00
62	1.000 X 1.000	=	1.00
63	1.000 X 1.000	=	1.00
64	1.000 X 1.000	=	1.00
65	1.000 X 1.000	=	1.00
66	1.000 X 1.000	=	1.00
67	1.000 X 1.000	=	1.00
68	1.000 X 1.000	=	1.00
69	1.000 X 1.000	=	1.00
70	1.000 X 1.000	=	1.00
71	1.000 X 1.000	=	1.00
72	1.000 X 1.000	=	1.00
73	1.000 X 1.000	=	1.00
74	1.000 X 1.000	=	1.00
75	1.000 X 1.000	=	1.00
76	1.000 X 1.000	=	1.00
77	1.000 X 1.000	=	1.00
78	1.000 X 1.000	=	1.00
79	1.000 X 1.000	=	1.00
80	1.000 X 1.000	=	1.00
81	1.000 X 1.000	=	1.00
82	1.000 X 1.000	=	1.00
83	1.000 X 1.000	=	1.00
84	1.000 X 1.000	=	1.00
85	1.000 X 1.000	=	1.00
86	1.000 X 1.000	=	1.00
87	1.000 X 1.000	=	1.00
88	1.000 X 1.000	=	1.00
89	1.000 X 1.000	=	1.00
90	1.000 X 1.000	=	1.00
91	1.000 X 1.000	=	1.00
92	1.000 X 1.000	=	1.00
93	1.000 X 1.000	=	1.00
94	1.000 X 1.000	=	1.00
95	1.000 X 1.000	=	1.00
96	1.000 X 1.000	=	1.00
97	1.000 X 1.000	=	1.00
98	1.000 X 1.000	=	1.00
99	1.000 X 1.000	=	1.00
100	1.000 X 1.000	=	1.00



**CONTENTS OF SHEET**

FIRE CHECK FLOOR PLAN WITH AREA LINE DRAWING & CALCULATION  
 TERRACE FLOOR PLAN WITH AREA LINE DRAWING & CALCULATION ETC.

**STAMP OF APPROVAL OF PLAN**

PLANNING & ARCHITECTURE  
 10, JAYSHREE CHANDRA ROAD, 2ND FLOOR, CHANDRAPUR, THANE (W), 400 002  
 PHONE - 2527 8701 TELEFAX - 2528 4700  
 E MAIL - [sankararchitects@yahoo.co.in](mailto:sankararchitects@yahoo.co.in)

DATE: 11.01.2011

PROJECT: 11.01.2011

SCALE: 1:50

PROJECT NO: 11.01.2011

PROJECT NAME: 11.01.2011

PROJECT ADDRESS: 11.01.2011

PROJECT CONTACT: 11.01.2011

PROJECT PHONE: 11.01.2011

PROJECT FAX: 11.01.2011

PROJECT EMAIL: 11.01.2011

PROJECT WEBSITE: 11.01.2011

PROJECT SOCIAL MEDIA: 11.01.2011

PROJECT OTHER: 11.01.2011

**SCHEDULE OF DOOR & WINDOW**

NO.	TYPE	SIZE	DESCRIPTION
1	1	1.00 X 1.00	SMALL WINDOW ALUMINUM
2	2	1.00 X 1.00	SMALL WINDOW ALUMINUM
3	3	1.00 X 1.00	SMALL WINDOW ALUMINUM
4	4	1.00 X 1.00	SMALL WINDOW ALUMINUM
5	5	1.00 X 1.00	SMALL WINDOW ALUMINUM
6	6	1.00 X 1.00	SMALL WINDOW ALUMINUM
7	7	1.00 X 1.00	SMALL WINDOW ALUMINUM
8	8	1.00 X 1.00	SMALL WINDOW ALUMINUM
9	9	1.00 X 1.00	SMALL WINDOW ALUMINUM
10	10	1.00 X 1.00	SMALL WINDOW ALUMINUM
11	11	1.00 X 1.00	SMALL WINDOW ALUMINUM
12	12	1.00 X 1.00	SMALL WINDOW ALUMINUM
13	13	1.00 X 1.00	SMALL WINDOW ALUMINUM
14	14	1.00 X 1.00	SMALL WINDOW ALUMINUM
15	15	1.00 X 1.00	SMALL WINDOW ALUMINUM
16	16	1.00 X 1.00	SMALL WINDOW ALUMINUM
17	17	1.00 X 1.00	SMALL WINDOW ALUMINUM
18	18	1.00 X 1.00	SMALL WINDOW ALUMINUM
19	19	1.00 X 1.00	SMALL WINDOW ALUMINUM
20	20	1.00 X 1.00	SMALL WINDOW ALUMINUM
21	21	1.00 X 1.00	SMALL WINDOW ALUMINUM
22	22	1.00 X 1.00	SMALL WINDOW ALUMINUM
23	23	1.00 X 1.00	SMALL WINDOW ALUMINUM
24	24	1.00 X 1.00	SMALL WINDOW ALUMINUM
25	25	1.00 X 1.00	SMALL WINDOW ALUMINUM
26	26	1.00 X 1.00	SMALL WINDOW ALUMINUM
27	27	1.00 X 1.00	SMALL WINDOW ALUMINUM
28	28	1.00 X 1.00	SMALL WINDOW ALUMINUM
29	29	1.00 X 1.00	SMALL WINDOW ALUMINUM
30	30	1.00 X 1.00	SMALL WINDOW ALUMINUM
31	31	1.00 X 1.00	SMALL WINDOW ALUMINUM
32	32	1.00 X 1.00	SMALL WINDOW ALUMINUM
33	33	1.00 X 1.00	SMALL WINDOW ALUMINUM
34	34	1.00 X 1.00	SMALL WINDOW ALUMINUM
35	35	1.00 X 1.00	SMALL WINDOW ALUMINUM
36	36	1.00 X 1.00	SMALL WINDOW ALUMINUM
37	37	1.00 X 1.00	SMALL WINDOW ALUMINUM
38	38	1.00 X 1.00	SMALL WINDOW ALUMINUM
39	39	1.00 X 1.00	SMALL WINDOW ALUMINUM
40	40	1.00 X 1.00	SMALL WINDOW ALUMINUM
41	41	1.00 X 1.00	SMALL WINDOW ALUMINUM
42	42	1.00 X 1.00	SMALL WINDOW ALUMINUM
43	43	1.00 X 1.00	SMALL WINDOW ALUMINUM
44	44	1.00 X 1.00	SMALL WINDOW ALUMINUM
45	45	1.00 X 1.00	SMALL WINDOW ALUMINUM
46	46	1.00 X 1.00	SMALL WINDOW ALUMINUM
47	47	1.00 X 1.00	SMALL WINDOW ALUMINUM
48	48	1.00 X 1.00	SMALL WINDOW ALUMINUM
49	49	1.00 X 1.00	SMALL WINDOW ALUMINUM
50	50	1.00 X 1.00	SMALL WINDOW ALUMINUM
51	51	1.00 X 1.00	SMALL WINDOW ALUMINUM
52	52	1.00 X 1.00	SMALL WINDOW ALUMINUM
53	53	1.00 X 1.00	SMALL WINDOW ALUMINUM
54	54	1.00 X 1.00	SMALL WINDOW ALUMINUM
55	55	1.00 X 1.00	SMALL WINDOW ALUMINUM
56	56	1.00 X 1.00	SMALL WINDOW ALUMINUM
57	57		

CONTENTS OF SHEET

SECTION ELEVATION ETC

STAMP OF APPROVAL OF PLAN

NOTHING IS PRINTED IN THIS PAGE OF DRAWINGS WHICH ARE TO BE USED AS BASIS FOR COMMERCIAL CONTRACTS (SALES/RENT/COMMERCIAL) WITHOUT ISSUES OF PFD. PLEASE REFER TO THE SALES/RENT CONTRACT AND THE CONDITIONS MENTIONED THEREIN AND THE CONDITIONS MENTIONED THEREIN.



NOTE: YELLOW USE WITH NO SERVICE PLATFORM IS PROVIDED

SCHEDULE OF DOOR & WINDOW

NO.	TYPE	DOOR & WINDOW	SPACING	DESCRIPTION
1	0	1.00 x 2.00	0.00	SINGLE SHUTTER-FIRE IN SET FLOOR DOOR
2	01	1.00 x 2.00	0.00	SINGLE SHUTTER-FLOOR DOOR
3	02	2.00 x 2.00	0.00	SINGLE SHUTTER-FLOOR DOOR
4	03	0.75 x 2.00	0.00	SINGLE SHUTTER-FLOOR DOOR
5	04	0.75 x 1.50	0.00	2 PANEL SLIDING ALUMINIUM WINDOW
6	05	1.00 x 1.50	0.00	2 PANEL SLIDING ALUMINIUM WINDOW
7	06	1.50 x 1.50	0.00	2 PANEL SLIDING ALUMINIUM WINDOW
8	07	2.00 x 1.50	0.00	2 PANEL SLIDING ALUMINIUM WINDOW
9	08	2.00 x 1.50	0.00	2 PANEL SLIDING ALUMINIUM WINDOW
10	09	1.00 x 1.50	0.00	2 PANEL SLIDING ALUMINIUM WINDOW
11	10	1.00 x 1.50	0.00	2 PANEL SLIDING ALUMINIUM WINDOW
12	11	1.00 x 1.50	0.00	2 PANEL SLIDING ALUMINIUM WINDOW
13	12	1.00 x 1.50	0.00	2 PANEL SLIDING ALUMINIUM WINDOW
14	13	2.00 x 2.00	0.00	2 PANEL SLIDING ALUMINIUM WINDOW
15	14	2.00 x 2.00	0.00	2 PANEL SLIDING ALUMINIUM WINDOW
16	15	2.00 x 2.00	0.00	2 PANEL SLIDING ALUMINIUM WINDOW
17	16	2.00 x 2.00	0.00	2 PANEL SLIDING ALUMINIUM WINDOW
18	17	2.00 x 2.00	0.00	2 PANEL SLIDING ALUMINIUM WINDOW
19	18	2.00 x 2.00	0.00	2 PANEL SLIDING ALUMINIUM WINDOW
20	19	2.00 x 2.00	0.00	2 PANEL SLIDING ALUMINIUM WINDOW
21	20	2.00 x 2.00	0.00	2 PANEL SLIDING ALUMINIUM WINDOW
22	21	2.00 x 2.00	0.00	2 PANEL SLIDING ALUMINIUM WINDOW
23	22	2.00 x 2.00	0.00	2 PANEL SLIDING ALUMINIUM WINDOW
24	23	2.00 x 2.00	0.00	2 PANEL SLIDING ALUMINIUM WINDOW
25	24	2.00 x 2.00	0.00	2 PANEL SLIDING ALUMINIUM WINDOW
26	25	2.00 x 2.00	0.00	2 PANEL SLIDING ALUMINIUM WINDOW
27	26	2.00 x 2.00	0.00	2 PANEL SLIDING ALUMINIUM WINDOW
28	27	2.00 x 2.00	0.00	2 PANEL SLIDING ALUMINIUM WINDOW
29	28	2.00 x 2.00	0.00	2 PANEL SLIDING ALUMINIUM WINDOW
30	29	2.00 x 2.00	0.00	2 PANEL SLIDING ALUMINIUM WINDOW
31	30	2.00 x 2.00	0.00	2 PANEL SLIDING ALUMINIUM WINDOW
32	31	2.00 x 2.00	0.00	2 PANEL SLIDING ALUMINIUM WINDOW
33	32	2.00 x 2.00	0.00	2 PANEL SLIDING ALUMINIUM WINDOW
34	33	2.00 x 2.00	0.00	2 PANEL SLIDING ALUMINIUM WINDOW
35	34	2.00 x 2.00	0.00	2 PANEL SLIDING ALUMINIUM WINDOW
36	35	2.00 x 2.00	0.00	2 PANEL SLIDING ALUMINIUM WINDOW
37	36	2.00 x 2.00	0.00	2 PANEL SLIDING ALUMINIUM WINDOW
38	37	2.00 x 2.00	0.00	2 PANEL SLIDING ALUMINIUM WINDOW
39	38	2.00 x 2.00	0.00	2 PANEL SLIDING ALUMINIUM WINDOW
40	39	2.00 x 2.00	0.00	2 PANEL SLIDING ALUMINIUM WINDOW
41	40	2.00 x 2.00	0.00	2 PANEL SLIDING ALUMINIUM WINDOW
42	41	2.00 x 2.00	0.00	2 PANEL SLIDING ALUMINIUM WINDOW
43	42	2.00 x 2.00	0.00	2 PANEL SLIDING ALUMINIUM WINDOW
44	43	2.00 x 2.00	0.00	2 PANEL SLIDING ALUMINIUM WINDOW
45	44	2.00 x 2.00	0.00	2 PANEL SLIDING ALUMINIUM WINDOW
46	45	2.00 x 2.00	0.00	2 PANEL SLIDING ALUMINIUM WINDOW
47	46	2.00 x 2.00	0.00	2 PANEL SLIDING ALUMINIUM WINDOW
48	47	2.00 x 2.00	0.00	2 PANEL SLIDING ALUMINIUM WINDOW
49	48	2.00 x 2.00	0.00	2 PANEL SLIDING ALUMINIUM WINDOW
50	49	2.00 x 2.00	0.00	2 PANEL SLIDING ALUMINIUM WINDOW
51	50	2.00 x 2.00	0.00	2 PANEL SLIDING ALUMINIUM WINDOW
52	51	2.00 x 2.00	0.00	2 PANEL SLIDING ALUMINIUM WINDOW
53	52	2.00 x 2.00	0.00	2 PANEL SLIDING ALUMINIUM WINDOW
54	53	2.00 x 2.00	0.00	2 PANEL SLIDING ALUMINIUM WINDOW
55	54	2.00 x 2.00	0.00	2 PANEL SLIDING ALUMINIUM WINDOW
56	55	2.00 x 2.00	0.00	2 PANEL SLIDING ALUMINIUM WINDOW
57	56	2.00 x 2.00	0.00	2 PANEL SLIDING ALUMINIUM WINDOW
58	57	2.00 x 2.00	0.00	2 PANEL SLIDING ALUMINIUM WINDOW
59	58	2.00 x 2.00	0.00	2 PANEL SLIDING ALUMINIUM WINDOW
60	59	2.00 x 2.00	0.00	2 PANEL SLIDING ALUMINIUM WINDOW
61	60	2.00 x 2.00	0.00	2 PANEL SLIDING ALUMINIUM WINDOW
62	61	2.00 x 2.00	0.00	2 PANEL SLIDING ALUMINIUM WINDOW
63	62	2.00 x 2.00	0.00	2 PANEL SLIDING ALUMINIUM WINDOW
64	63	2.00 x 2.00	0.00	2 PANEL SLIDING ALUMINIUM WINDOW
65	64	2.00 x 2.00	0.00	2 PANEL SLIDING ALUMINIUM WINDOW
66	65	2.00 x 2.00	0.00	2 PANEL SLIDING ALUMINIUM WINDOW
67	66	2.00 x 2.00	0.00	2 PANEL SLIDING ALUMINIUM WINDOW
68	67	2.00 x 2.00	0.00	2 PANEL SLIDING ALUMINIUM WINDOW
69	68	2.00 x 2.00	0.00	2 PANEL SLIDING ALUMINIUM WINDOW
70	69	2.00 x 2.00	0.00	2 PANEL SLIDING ALUMINIUM WINDOW
71	70	2.00 x 2.00	0.00	2 PANEL SLIDING ALUMINIUM WINDOW
72	71	2.00 x 2.00	0.00	2 PANEL SLIDING ALUMINIUM WINDOW
73	72	2.00 x 2.00	0.00	2 PANEL SLIDING ALUMINIUM WINDOW
74	73	2.00 x 2.00	0.00	2 PANEL SLIDING ALUMINIUM WINDOW
75	74	2.00 x 2.00	0.00	2 PANEL SLIDING ALUMINIUM WINDOW
76	75	2.00 x 2.00	0.00	2 PANEL SLIDING ALUMINIUM WINDOW
77	76	2.00 x 2.00	0.00	2 PANEL SLIDING ALUMINIUM WINDOW
78	77	2.00 x 2.00	0.00	2 PANEL SLIDING ALUMINIUM WINDOW
79	78	2.00 x 2.00	0.00	2 PANEL SLIDING ALUMINIUM WINDOW
80	79	2.00 x 2.00	0.00	2 PANEL SLIDING ALUMINIUM WINDOW
81	80	2.00 x 2.00	0.00	2 PANEL SLIDING ALUMINIUM WINDOW
82	81	2.00 x 2.00	0.00	2 PANEL SLIDING ALUMINIUM WINDOW
83	82	2.00 x 2.00	0.00	2 PANEL SLIDING ALUMINIUM WINDOW
84	83	2.00 x 2.00	0.00	2 PANEL SLIDING ALUMINIUM WINDOW
85	84	2.00 x 2.00	0.00	2 PANEL SLIDING ALUMINIUM WINDOW
86	85	2.00 x 2.00	0.00	2 PANEL SLIDING ALUMINIUM WINDOW
87	86	2.00 x 2.00	0.00	2 PANEL SLIDING ALUMINIUM WINDOW
88	87	2.00 x 2.00	0.00	2 PANEL SLIDING ALUMINIUM WINDOW
89	88	2.00 x 2.00	0.00	2 PANEL SLIDING ALUMINIUM WINDOW
90	89	2.00 x 2.00	0.00	2 PANEL SLIDING ALUMINIUM WINDOW
91	90	2.00 x 2.00	0.00	2 PANEL SLIDING ALUMINIUM WINDOW
92	91	2.00 x 2.00	0.00	2 PANEL SLIDING ALUMINIUM WINDOW
93	92	2.00 x 2.00	0.00	2 PANEL SLIDING ALUMINIUM WINDOW
94	93	2.00 x 2.00	0.00	2 PANEL SLIDING ALUMINIUM WINDOW
95	94	2.00 x 2.00	0.00	2 PANEL SLIDING ALUMINIUM WINDOW
96	95	2.00 x 2.00	0.00	2 PANEL SLIDING ALUMINIUM WINDOW
97	96	2.00 x 2.00	0.00	2 PANEL SLIDING ALUMINIUM WINDOW
98	97	2.00 x 2.00	0.00	2 PANEL SLIDING ALUMINIUM WINDOW
99	98	2.00 x 2.00	0.00	2 PANEL SLIDING ALUMINIUM WINDOW
100	99	2.00 x 2.00	0.00	2 PANEL SLIDING ALUMINIUM WINDOW

DESCRIPTION OF PROPOSAL

PROPOSED RECONSTRUCTION PROJECT ON PLOT BEARING NO. 42, 43, 44, 45, 46, 47, 48, 49, 50, 51, 52, 53, 54, 55, 56, 57, 58, 59, 60, 61, 62, 63, 64, 65, 66, 67, 68, 69, 70, 71, 72, 73, 74, 75, 76, 77, 78, 79, 80, 81, 82, 83, 84, 85, 86, 87, 88, 89, 90, 91, 92, 93, 94, 95, 96, 97, 98, 99, 100, 101, 102, 103, 104, 105, 106, 107, 108, 109, 110, 111, 112, 113, 114, 115, 116, 117, 118, 119, 120, 121, 122, 123, 124, 125, 126, 127, 128, 129, 130, 131, 132, 133, 134, 135, 136, 137, 138, 139, 140, 141, 142, 143, 144, 145, 146, 147, 148, 149, 150, 151, 152, 153, 154, 155, 156, 157, 158, 159, 160, 161, 162, 163, 164, 165, 166, 167, 168, 169, 170, 171, 172, 173, 174, 175, 176, 177, 178, 179, 180, 181, 182, 183, 184, 185, 186, 187, 188, 189, 190, 191, 192, 193, 194, 195, 196, 197, 198, 199, 200, 201, 202, 203, 204, 205, 206, 207, 208, 209, 210, 211, 212, 213, 214, 215, 216, 217, 218, 219, 220, 221, 222, 223, 224, 225, 226, 227, 228, 229, 230, 231, 232, 233, 234, 235, 236, 237, 238, 239, 240, 241, 242, 243, 244, 245, 246, 247, 248, 249, 250, 251, 252, 253, 254, 255, 256, 257, 258, 259, 260, 261, 262, 263, 264, 265, 266, 267, 268, 269, 270, 271, 272, 273, 274, 275, 276, 277, 278, 279, 280, 281, 282, 283, 284, 285, 286, 287, 288, 289, 290, 291, 292, 293, 294, 295, 296, 297, 298, 299, 300, 301, 302, 303, 304, 305, 306, 307, 308, 309, 310, 311, 312, 313, 314, 315, 316, 317, 318, 319, 320, 321, 322, 323, 324, 325, 326, 327, 328, 329, 330, 331, 332, 333, 334, 335, 336, 337, 338, 339, 340, 341, 342, 343, 344, 345, 346, 347, 348, 349, 350, 351, 352, 353, 354, 355, 356, 357, 358, 359, 360, 361, 362, 363, 364, 365, 366, 367, 368, 369, 370, 371, 372, 373, 374, 375, 376, 377, 378, 379, 380, 381, 382, 383, 384, 385, 386, 387, 388, 389, 390, 391, 392, 393, 394, 395, 396, 397, 398, 399, 400, 401, 402, 403, 404, 405, 406, 407, 408, 409, 410, 411, 412, 413, 414, 415, 416, 417, 418, 419, 420, 421, 422, 423, 424, 425, 426, 427, 428, 429, 430, 431, 432, 433, 434, 435, 436, 437, 438, 439, 440, 441, 442, 443, 444, 445, 446, 447, 448, 449, 450, 451, 452, 453, 454, 455, 456, 457, 458, 459, 460, 461, 462, 463, 464, 465, 466, 467, 468, 469, 470, 471, 472, 473, 474, 475, 476, 477, 478, 479, 480, 481, 482, 483, 484, 485, 486, 487, 488, 489, 490, 491, 492, 493, 494, 495, 496, 497, 498, 499, 500, 501, 502, 503, 504, 505, 506, 507, 508, 509, 510, 511, 512, 513, 514, 515, 516, 517, 518, 519, 520, 521, 522, 523, 524, 525, 526, 527, 528, 529, 530, 531, 532, 533, 534, 535, 536, 537, 538, 539, 540, 541, 542, 543, 544, 545, 546, 547, 548, 549, 550, 551, 552, 553, 554, 555, 556, 557, 558, 559, 560, 561, 562, 563, 564, 565, 566, 567, 568, 569, 570, 571, 572, 573, 574, 575, 576, 577, 578, 579, 580, 581, 582, 583, 584, 585, 586, 587, 588, 589, 590, 591, 592, 593, 594, 595, 596, 597, 598, 599, 600, 601, 602, 603, 604, 605, 606, 607, 608, 609, 610, 611, 612, 613, 614, 615, 616, 617, 618, 619, 620, 621, 622, 623, 624, 625, 626, 627, 628, 629, 630, 631, 632, 633, 634, 635, 636, 637, 638, 639, 640, 641, 642, 643, 644, 645, 646, 647, 648, 649, 650, 651, 652, 653, 654, 655, 656, 657, 658, 659, 660, 661, 662, 663, 664, 665, 666, 667, 668, 669, 670, 671, 672, 673, 674, 675, 676, 677, 678, 679, 680, 681, 682, 683, 684, 685, 686, 687, 688, 689, 690, 691, 692, 693, 694, 695, 696, 697, 698, 699, 700, 701, 702, 703, 704, 705, 706, 707, 708, 709, 710, 711, 712, 713, 714, 715, 716, 717, 718, 719, 720, 721, 722, 723, 724, 725, 726, 727, 728, 729, 730, 731, 732, 733, 734, 735, 736, 737, 738, 739, 740, 741, 742, 743, 744, 745, 746, 747, 748, 749, 750, 751, 752, 753, 754, 755, 756, 757, 758, 759, 760, 761, 762, 763, 764, 765, 766, 767, 768, 769, 770, 771, 772, 773, 774, 775, 776, 777, 778, 779, 780, 781, 782, 783, 784, 785, 786, 787, 788, 789, 790, 791, 792, 793, 794, 795, 796, 797, 798, 799, 800, 801, 802, 803, 804, 805, 806, 807, 808, 809, 810, 811, 812, 813, 814, 815, 816, 817, 818, 819, 820, 821, 822, 823, 824, 825, 826, 827, 828, 829, 830, 831, 832, 833, 834, 835, 836, 837, 838, 839, 840, 841, 842, 843, 844, 845, 846, 847, 848, 849, 850, 851, 852, 853, 854, 855, 856, 857, 858, 859, 860, 861, 862, 863, 864, 865, 866, 867, 868, 869, 870, 871, 872, 873, 874, 875, 876, 877, 878, 879, 880, 881, 882, 883, 884, 885, 886, 887, 888, 889, 890, 891, 892, 893, 894, 895, 896, 897, 898, 899, 900, 901, 902, 903, 904, 905, 906, 907, 908, 909, 910, 911, 912, 913, 914, 915, 916, 917, 918, 919, 920, 921, 922, 923, 924, 925, 926, 927, 928, 929, 930, 931, 932, 933, 934, 935, 936, 937, 938, 939, 940, 941, 942, 943, 944, 945, 946, 947, 948, 949, 950, 951, 952, 953, 954, 955, 956, 957, 958, 959, 960, 961, 962, 963, 964, 965, 966, 967, 968, 969, 970, 971, 972, 973, 974, 975, 976, 977, 978, 979, 980, 981, 982, 983, 984, 985, 986, 987, 988, 989, 990, 991, 992, 993, 994, 995, 996, 997, 998, 999, 1000.

NAME AND ADDRESS OF OWNER / P.O.A.

DIRECTOR  
M/S. RAJESH REGENCY PVT. LTD.  
PUNJAB & TAMIL NADU  
PUNJAB, INDIA  
M/S. RAJESH REGENCY PVT. LTD.  
PUNJAB & TAMIL NADU  
PUNJAB, INDIA

SIGNATURE OF OWNER / P.O.A. SIGNATURE OF ARCHITECT

ARCHITECTS

**Sankar PROJECTS**  
2ND FLOOR, NANDHATRA, A WING  
NEAR TMC, ALMEDA ROAD,  
PANCHAKHADI, THANE (W), 400 602  
PHONE - 2537 8071, TELEFAX - 2536 4700  
E MAIL - [sankarprojects@rediffmail.com](mailto:sankarprojects@rediffmail.com)

