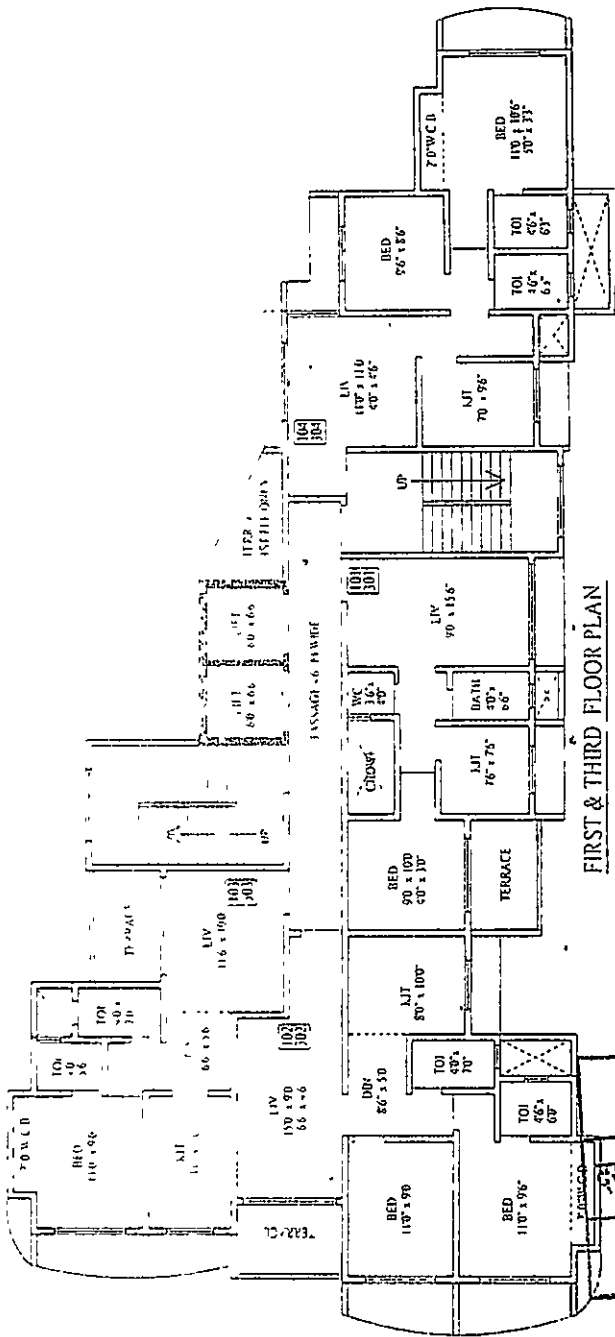


PRODUCED BY AN AUTODESK EDUCATIONAL PRODUCT

IMPERIAL GREENS



FIRST & THIRD FLOOR PLAN
SCALE: 1/200

45.00 M W I D E D 7 3 0 - 2

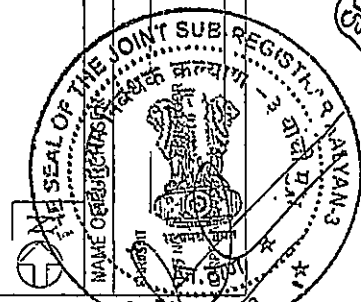
CONSULTING ARCHITECT
TIBIN TONSON THOMAS
ARCHITECT & INT. DESIGNERS
82 / ROOM No. 239
KASTURBI PLAZA, DOMA (E)

ARCHITECT
DE-CON ASSOCIATES
ARCHITECT & INT. DESIGNERS
S. 1 / RAJSHREE TOWER
ROAD NO. 10, 11 & 12
KALYANI (W)

BUILDERS & DEVELOPERS
115 SHREE DURGAMMA PROPERTIES AND DEVELOPERS
DOMBIVLI (W)

DISCUSSION PROPOSAL
PROPOSED RESIDENTIAL & COMMERCIAL BUILDING ON
PLOT BEARING NO. 316 (REAR) & 319 (FRONT) H.NO. 91 & 2
AT VILLAGE SHIVAJI NAGAR, DOMBIVLI (W),
TAL. KATYAN DIST. THANE

Handwritten notes and signatures in Marathi script, including '2020' and '2021'.



PRODUCED BY AN AUTODESK EDUCATIONAL PRODUCT

Handwritten notes in Marathi script, including 'वॉल्यूम १' and '२०२०'.

PRODUCED BY AN AUTODESK EDUCATIONAL PRODUCT

कलियान - ३	
दस्ता क्र. १०००	२०२३
६१	७७

