

Open your doors
to fuller living





Redefining The
Unique Historical
Perspective with A
Modern Lifestyle

Creating a modern and sophisticated
atmosphere that is steeped in the
elegance and grandeur of the past.

Serenity for The Soul,
Inspiration for The Mind.

Actual View

An aerial photograph of a coastal city, likely Cebu, Philippines. The foreground shows a dense urban area with a mix of modern high-rise buildings and older structures with red-tiled roofs. A prominent church with a red roof and a bell tower is visible. The middle ground features a large harbor filled with numerous ships, including cargo vessels and smaller boats. In the background, there are mountains and a clear blue sky.

From Serene To Exhilarating,
Exceptional Views Tailored for You.

Visual experience that is both breath-taking and memorable, giving you a new appreciation for the beauty and an awe-inspiring vantage point of the surrounding area.

Actual View

Welcome to the Exclusive High-Rise Life

48-Level of uncompromised living

Welcome to your aspirational urban lifestyle inspired by the richness of heritage
A lifestyle defined by quality, grandeur and scale

Take a walk down the lanes of Old Bombay and relive the charm of the golden days
from where it all began

Wake up in the heart of South Mumbai with mesmerizing sea views all around
Located at Marine Lines, this is the first high rise in the area offering ultra-modern
amenities for your indulgence at a height of 154 meters

Welcome to the high-rise life. Welcome to Ajmera Downtown



Embrace A Life Of Purpose, Rediscover The Art Of Living

- Six High Speed Elevators (Incl. Separate Service Elevator)
- Ample Open Space on Ground Level
- Aluminum Formwork Construction For Superior Quality
- EV Charging Stations
- Solar Power Backup
- Vastu Compliant Flats



Experience Your Personal Oasis
Of Ultimate Comfort



Artist's Impression



Artist's Impression

A wide-angle, long-exposure photograph of the Mumbai skyline at night. The city lights are reflected on the calm water in the foreground. The sky is a deep, clear blue. The buildings are illuminated with various colors, including white, yellow, and blue. The water is dark blue, and the rocks in the foreground are dark and silhouetted against the water.

In a location of Mumbai's aspirations

The location that offers the best of both worlds - a comfortable and convenient place to call home, and easy access to all the opportunities and communities

LOCATION MAP



Feel The Energy Of The City Of Dreams From The Heart Of It.

Ajmera Downtown is in proximity to the widest range of services across Education, Healthcare, Shopping, Leisure and Entertainment. In addition, enjoy easy connectivity through the central.

Railway Stations

- Marine Lines Railway Station – (Western Line)
- CSMT Railway Station – (Central & Harbour Lines)
- Churchgate Railway Station – (Western Line)

School

- St. Xavier's Boys Academy
- St. Xavier's High School
- Hindi VidhyaBhavan Global Academy
- B.D. Somani International School
- Cathedral School

Colleges

- H.R. & K. C. College
- Jai Hind College
- Sydenham College
- Hinduja College
- St. Xavier's College
- Government Law College

Hospitals

- Bombay Hospital
- Sir H.N. Reliance Foundation
- Saifee Hospital
- G.T. Hospital

Super Market / Shopping Hub

- Crawford Market
- Zaveri Bazaar
- Brand Factory
- Star Bazaar
- Nature's Basket
- Zara
- Dawa Bazaar
- Chira Bazaar
- Manish Market
- Mangaldas Market
- Mulji Jetha Market

Major Attractions

- Metro Inox Theatre
- Liberty Theatre
- Roxy Theatre
- Wankhede Stadium
- Brabourne Stadium (CCI)
- Marine Drive
- PJ Hindu Gymkhana
- Bombay Gymkhana
- Hanuman Mandir

Ample Recreational Amenities for Extensive Lifestyle

Unwind and relax with a range of amenities at Ajmera Downtown. Whether you are in the mood for a dip, a walk, working on your fitness regime or having a get together with your friends.



Indoor Games
An Ultimate Win



Artist's Impression

Where Playtime
Never Ends



Images For Representation

Fitness Centre
Stay fit Everyday



Infinity Swimming Pools
Double The Relaxation, Double The Fun



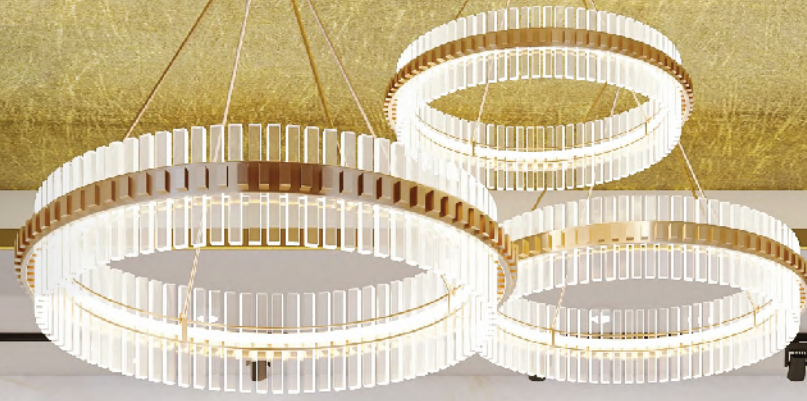
Rooftop Sky Lounge
Feel Refreshed At Our Rooftop Sky Lounge





Landscape Area
Relax At Your Peace Of Paradise

The Grand Statement Of Arrival



**Ajmera**
DOWNTOWN



Your Personal Space Redefined

Well planned, exquisitely designed and with superior quality, there is no other place that will give you the edge that you need for your ultra-modern lifestyle. This is Ajmera Downtown.



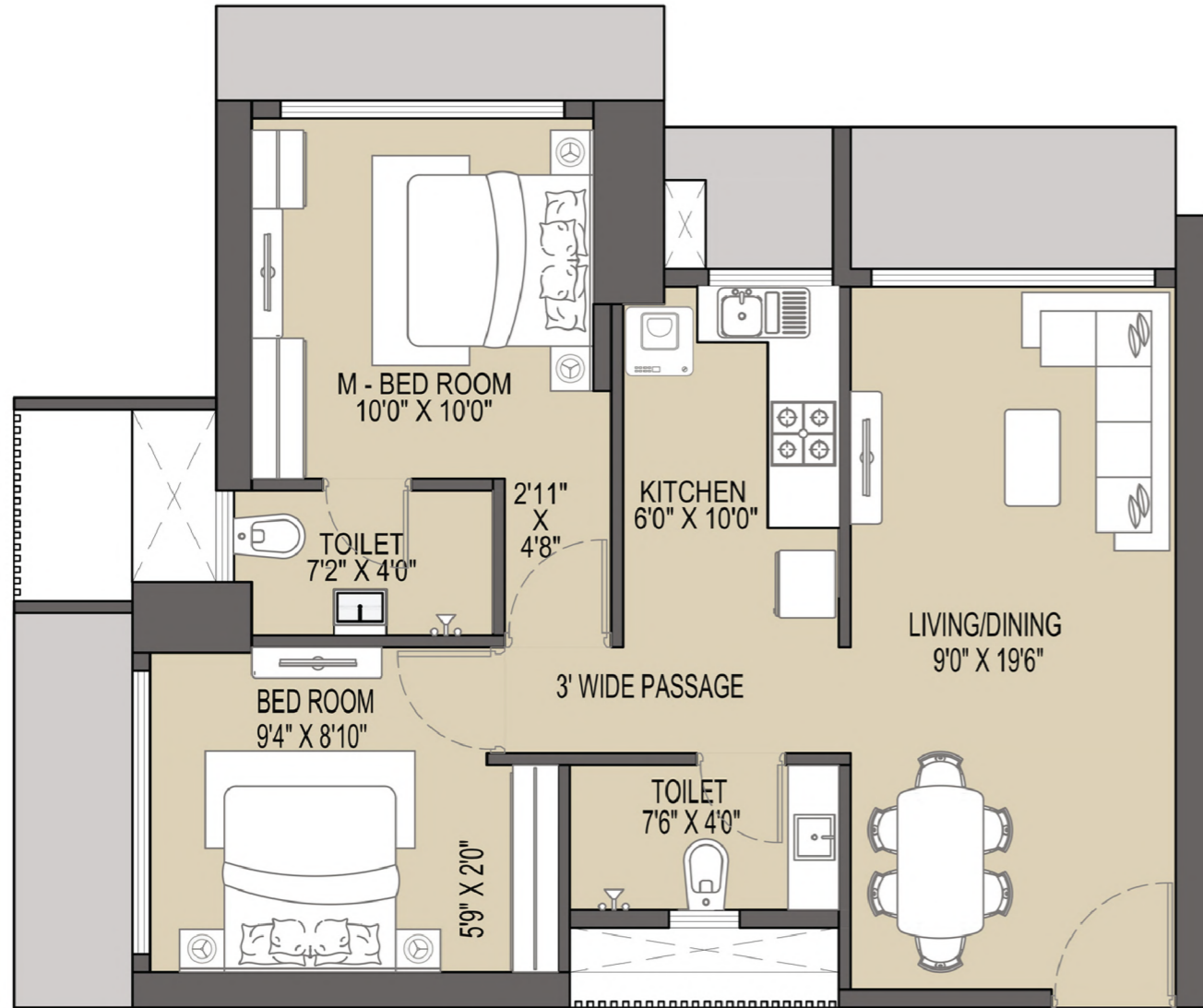
Typical floor Plan



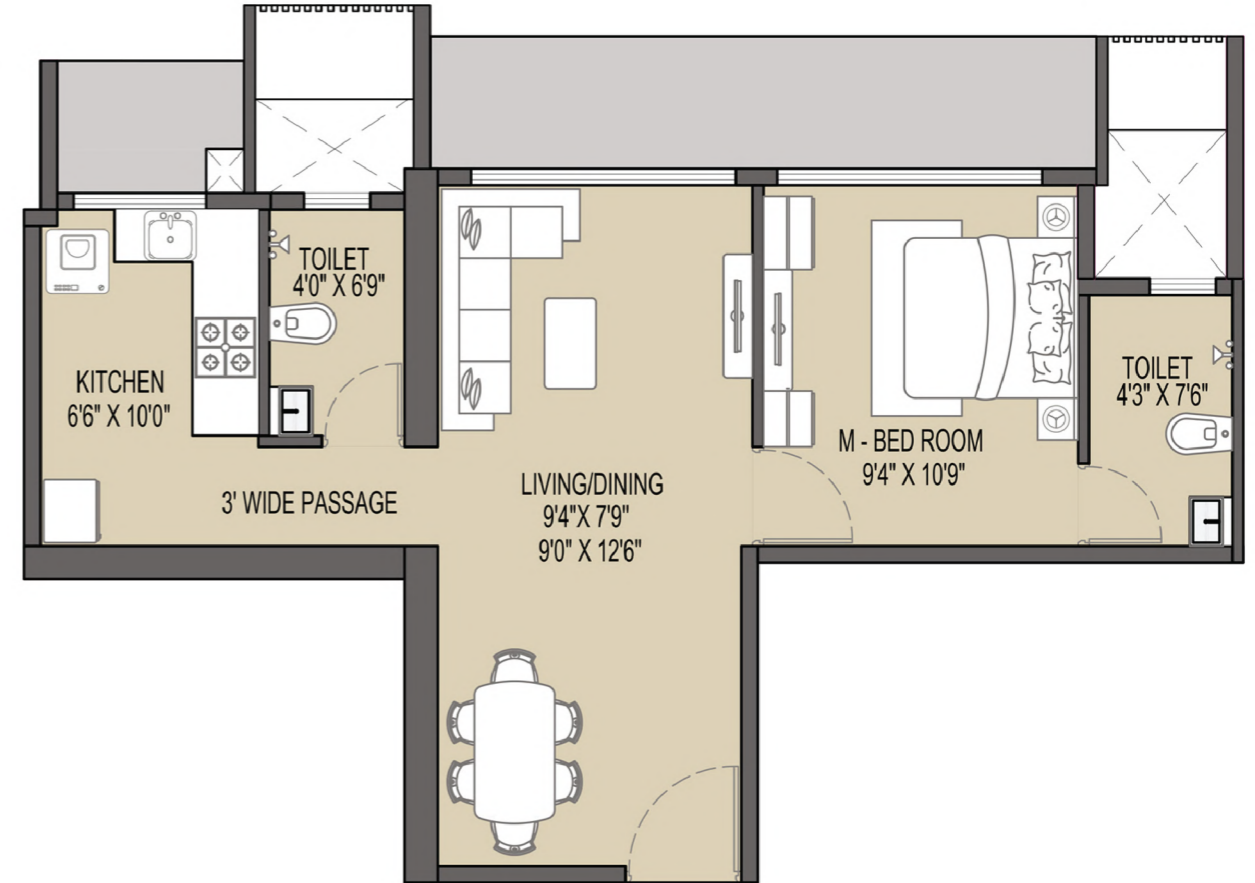
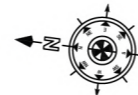
Flat no.1 & 4	560 sq. ft. (2BHK)	Flat no. 5 & 8	870 sq. ft. (3BHK)
Flat no. 2 & 3	440 sq. ft. (1BHK)	Flat no. 6 & 7	620 sq. ft. (2BHK)

Unit 1 & 4

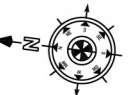
Unit 2 & 3



2 BHK - 560 sq. ft.

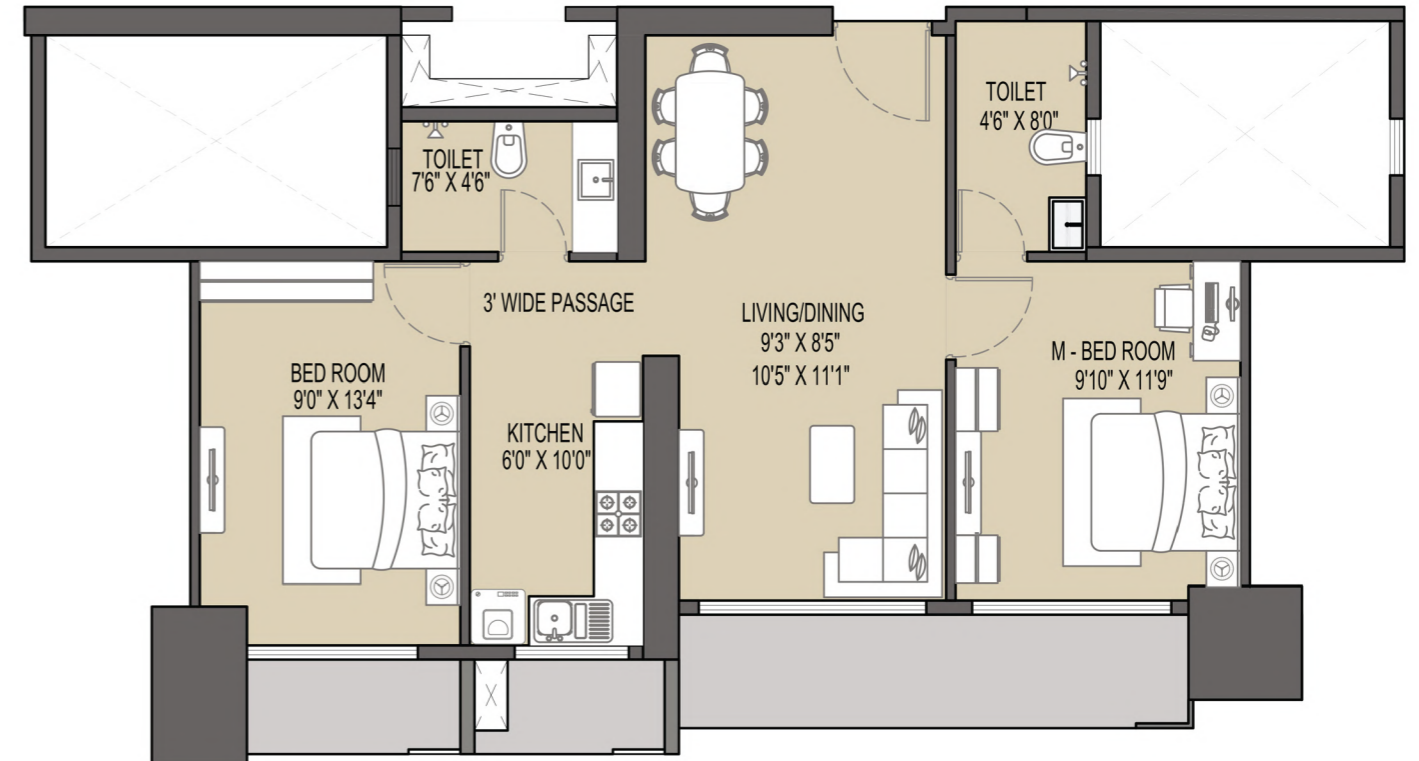
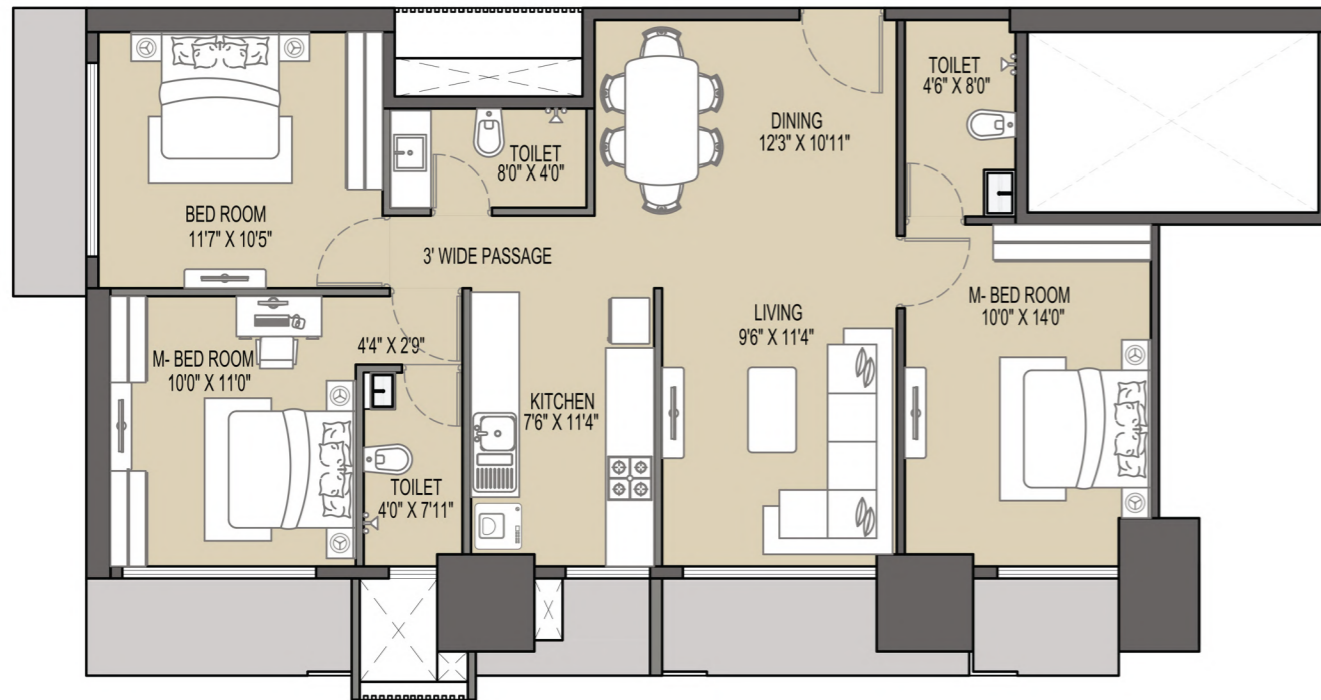


1 BHK - 440 sq. ft.

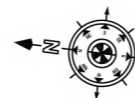


Unit 5 & 8

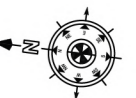
Unit 6 & 7



3 BHK - 870 sq. ft.



2 BHK - 620 sq. ft.





Pursuing Excellence Consistently For More Than 3 Decades

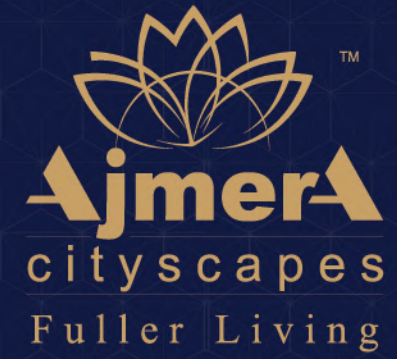
Ajmera Group, founded by Our Chairman Emeritus Late Shri Kishore Ajmera in the 1950s, and further strengthened under the able leadership of our Chairman Late Shri Jasmin Ajmera is a diversified conglomerate with a portfolio spanning Real Estate, Hospitality, Financial Services, and International Trade in the Pharmaceutical Sector.

Our core mission is to consistently deliver projects that stand the test of time and become the preferred developer for those who desire happy, enriched, and fulfilling living spaces, resulting in Fuller Living. We are dedicated to enriching the lives of each individual who chooses to live in an Ajmera Cityscapes development.


To us 'Fuller Living' is about delivering abundance; about giving you life spaces that allow you to fill your lungs with fresh soothing air; the ability to stretch out your legs and relax; life spaces to bond deeply with your loved ones; life spaces that allow your aspirations to soar untrammelled; life spaces that make for a grand lifestyle; spaces that make for moments that make memories; spaces that allow smiles to blossom and shine. Fuller Living is about rich, enhanced life spaces, nurturing supremely happy moments.

- 3 Million + Sq. Ft. Area Developed
- 3000+ Happy Families
- 21+ Completed Projects
- 30+ Years of Experience
- 3 Million Sq. Ft. Area Under Development





Site Address: Ajmera Downtown, K.H. Ajmera Chowk, Opp. L.T. Marg Police Station, Marine Lines, Mumbai - 400 002

 Rera Disclaimer : "The Project has been registered via MahaRERA registration number: P51900031924 and is available on the website under <https://maharera.mahaonline.gov.in>

DISCLAIMER: *The Amenities, features and any other information displayed are only indicative of the offering. The pictures and views of the building are promotional representation and artistic impression. The developer reserves the right to change, alter and edit the same at its sole discretion in the interest of the project. Contact the sale office for the detailed information of the project

Scan QR Code

