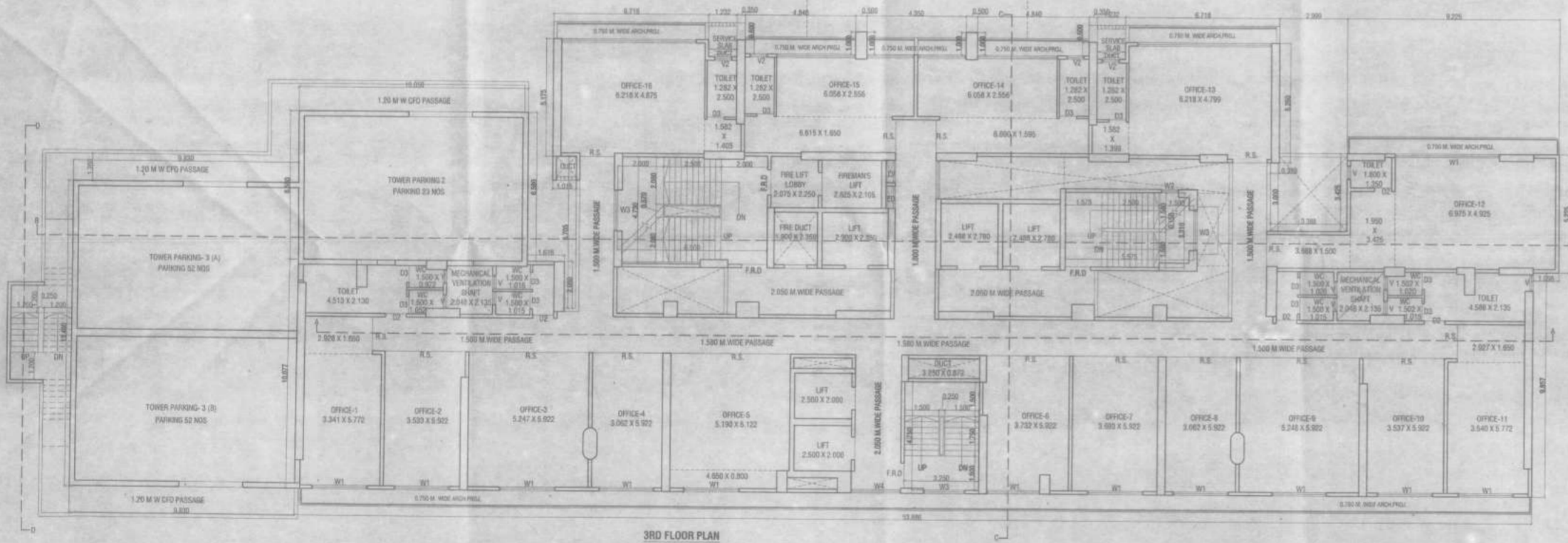
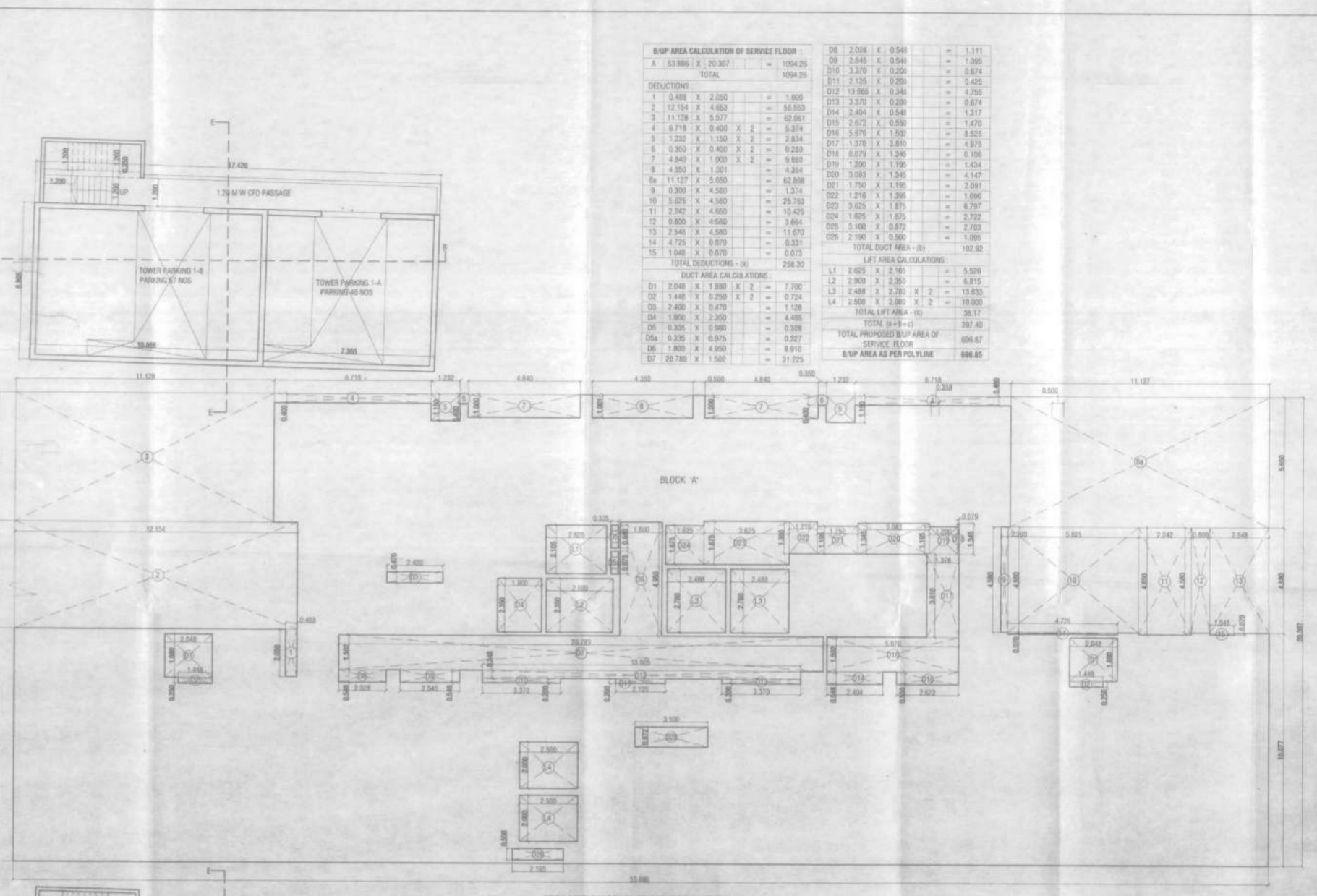


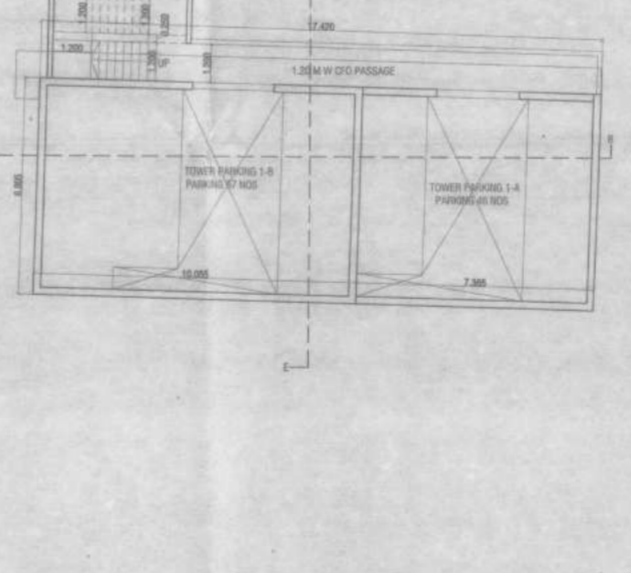
SERVICE FLOOR PLAN
SCALE 1:100



3RD FLOOR PLAN



AREA LINE DIAGRAM OF SERVICE FLOOR
SCALE 1:100



AREA LINE DIAGRAM OF SERVICE FLOOR
(PARKING TOWER 1A & 1B)
SCALE 1:100



AREA LINE DIAGRAM OF SERVICE FLOOR
(PARKING TOWER 2)
SCALE 1:100

SUP AREA CALCULATION OF SERVICE FLOOR

1	0.400 X 2.000	=	0.800
2	10.754 X 4.800	=	51.619
3	11.750 X 5.577	=	65.450
4	6.750 X 0.400 X 2	=	5.400
5	7.200 X 1.200 X 2	=	17.280
6	0.300 X 0.400 X 2	=	0.240
7	4.800 X 1.000 X 2	=	9.600
8	4.800 X 1.000	=	4.800
9	11.127 X 0.600	=	6.676
10	1.300 X 4.800	=	6.240
11	1.625 X 4.800	=	7.800
12	2.042 X 4.800	=	9.802
13	0.800 X 4.800	=	3.840
14	7.548 X 4.800	=	36.230
15	1.175 X 0.675	=	0.792
16	1.048 X 0.670	=	0.703
TOTAL CONSTRUCTION			258.30

NET AREA CALCULATION

01	0.204 X 1.800 X 2	=	0.734
02	1.448 X 2.288 X 2	=	6.724
03	1.400 X 0.470	=	0.658
04	1.900 X 2.200	=	4.180
05	0.320 X 0.900	=	0.288
06	0.200 X 0.675	=	0.135
07	0.800 X 1.400	=	1.120
08	2.700 X 1.500	=	4.050
TOTAL NET AREA			265.05

TOTAL PROPOSED SUP AREA OF SERVICE FLOOR = 265.05

SUP AREA AS PER POLYLINE = 265.05

PARKING AREA CALCULATION OF SERVICE FLOOR

P1	1.500 X 1.45	=	2.175
P2	1.500 X 1.45	=	2.175
P3	1.500 X 1.45	=	2.175
P4	1.500 X 1.45	=	2.175
P5	1.500 X 1.45	=	2.175
P6	1.500 X 1.45	=	2.175
P7	1.500 X 1.45	=	2.175
P8	1.500 X 1.45	=	2.175
P9	1.500 X 1.45	=	2.175
P10	1.500 X 1.45	=	2.175
P11	1.500 X 1.45	=	2.175
P12	1.500 X 1.45	=	2.175
P13	1.500 X 1.45	=	2.175
P14	1.500 X 1.45	=	2.175
P15	1.500 X 1.45	=	2.175
P16	1.500 X 1.45	=	2.175
P17	1.500 X 1.45	=	2.175
P18	1.500 X 1.45	=	2.175
P19	1.500 X 1.45	=	2.175
P20	1.500 X 1.45	=	2.175
P21	1.500 X 1.45	=	2.175
P22	1.500 X 1.45	=	2.175
P23	1.500 X 1.45	=	2.175
P24	1.500 X 1.45	=	2.175
P25	1.500 X 1.45	=	2.175
P26	1.500 X 1.45	=	2.175
P27	1.500 X 1.45	=	2.175
P28	1.500 X 1.45	=	2.175
P29	1.500 X 1.45	=	2.175
P30	1.500 X 1.45	=	2.175
P31	1.500 X 1.45	=	2.175
P32	1.500 X 1.45	=	2.175
P33	1.500 X 1.45	=	2.175
P34	1.500 X 1.45	=	2.175
P35	1.500 X 1.45	=	2.175
P36	1.500 X 1.45	=	2.175
P37	1.500 X 1.45	=	2.175
P38	1.500 X 1.45	=	2.175
P39	1.500 X 1.45	=	2.175
P40	1.500 X 1.45	=	2.175
P41	1.500 X 1.45	=	2.175
P42	1.500 X 1.45	=	2.175
P43	1.500 X 1.45	=	2.175
P44	1.500 X 1.45	=	2.175
P45	1.500 X 1.45	=	2.175
P46	1.500 X 1.45	=	2.175
P47	1.500 X 1.45	=	2.175
P48	1.500 X 1.45	=	2.175
P49	1.500 X 1.45	=	2.175
P50	1.500 X 1.45	=	2.175
P51	1.500 X 1.45	=	2.175
P52	1.500 X 1.45	=	2.175
P53	1.500 X 1.45	=	2.175
P54	1.500 X 1.45	=	2.175
P55	1.500 X 1.45	=	2.175
P56	1.500 X 1.45	=	2.175
P57	1.500 X 1.45	=	2.175
P58	1.500 X 1.45	=	2.175
P59	1.500 X 1.45	=	2.175
P60	1.500 X 1.45	=	2.175
P61	1.500 X 1.45	=	2.175
P62	1.500 X 1.45	=	2.175
P63	1.500 X 1.45	=	2.175
P64	1.500 X 1.45	=	2.175
P65	1.500 X 1.45	=	2.175
P66	1.500 X 1.45	=	2.175
P67	1.500 X 1.45	=	2.175
P68	1.500 X 1.45	=	2.175
P69	1.500 X 1.45	=	2.175
P70	1.500 X 1.45	=	2.175
P71	1.500 X 1.45	=	2.175
P72	1.500 X 1.45	=	2.175
P73	1.500 X 1.45	=	2.175
P74	1.500 X 1.45	=	2.175
P75	1.500 X 1.45	=	2.175
P76	1.500 X 1.45	=	2.175
P77	1.500 X 1.45	=	2.175
P78	1.500 X 1.45	=	2.175
P79	1.500 X 1.45	=	2.175
P80	1.500 X 1.45	=	2.175
P81	1.500 X 1.45	=	2.175
P82	1.500 X 1.45	=	2.175
P83	1.500 X 1.45	=	2.175
P84	1.500 X 1.45	=	2.175
P85	1.500 X 1.45	=	2.175
P86	1.500 X 1.45	=	2.175
P87	1.500 X 1.45	=	2.175
P88	1.500 X 1.45	=	2.175
P89	1.500 X 1.45	=	2.175
P90	1.500 X 1.45	=	2.175
P91	1.500 X 1.45	=	2.175
P92	1.500 X 1.45	=	2.175
P93	1.500 X 1.45	=	2.175
P94	1.500 X 1.45	=	2.175
P95	1.500 X 1.45	=	2.175
P96	1.500 X 1.45	=	2.175
P97	1.500 X 1.45	=	2.175
P98	1.500 X 1.45	=	2.175
P99	1.500 X 1.45	=	2.175
P100	1.500 X 1.45	=	2.175
P101	1.500 X 1.45	=	2.175
P102	1.500 X 1.45	=	2.175
P103	1.500 X 1.45	=	2.175
P104	1.500 X 1.45	=	2.175
P105	1.500 X 1.45	=	2.175
P106	1.500 X 1.45	=	2.175
P107	1.500 X 1.45	=	2.175
P108	1.500 X 1.45	=	2.175
P109	1.500 X 1.45	=	2.175
P110	1.500 X 1.45	=	2.175
P111	1.500 X 1.45	=	2.175
P112	1.500 X 1.45	=	2.175
P113	1.500 X 1.45	=	2.175
P114	1.500 X 1.45	=	2.175
P115	1.500 X 1.45	=	2.175
P116	1.500 X 1.45	=	2.175
P117	1.500 X 1.45	=	2.175
P118	1.500 X 1.45	=	2.175
P119	1.500 X 1.45	=	2.175
P120	1.500 X 1.45	=	2.175
P121	1.500 X 1.45	=	2.175
P122	1.500 X 1.45	=	2.175
P123	1.500 X 1.45	=	2.175
P124	1.500 X 1.45	=	2.175
P125	1.500 X 1.45	=	2.175
P126	1.500 X 1.45	=	2.175
P127	1.500 X 1.45	=	2.175
P128	1.500 X 1.45	=	2.175
P129	1.500 X 1.45	=	2.175
P130	1.500 X 1.45	=	2.175
P131	1.500 X 1.45	=	2.175
P132	1.500 X 1.45	=	2.175
P133	1.500 X 1.45	=	2.175
P134	1.500 X 1.45	=	2.175
P135	1.500 X 1.45	=	2.175
P136	1.500 X 1.45	=	2.175
P137	1.500 X 1.45	=	2.175
P138	1.500 X 1.45	=	2.175
P139	1.500 X 1.45	=	2.175
P140	1.500 X 1.45	=	2.175
P141	1.500 X 1.45	=	2.175
P142	1.500 X 1.45	=	2.175
P143	1.500 X 1.45	=	2.175
P144	1.500 X 1.45	=	2.175
P145	1.500 X 1.45	=	2.175
P146	1.500 X 1.45	=	2.175
P147	1.500 X 1.45	=	2.175
P148	1.500 X 1.45	=	2.175
P149	1.500 X 1.45	=	2.175
P150	1.500 X 1.45	=	2.175
P151	1.500 X 1.45	=	2.175
P152	1.500 X 1.45	=	2.175
P153	1.500 X 1.45	=	2.175
P154	1.500 X 1.45	=	2.175
P155	1.500 X 1.45	=	2.175
P156	1.500 X 1.45	=	2.175
P157	1.500 X 1.45	=	2.175
P158	1.500 X 1.45	=	2.175
P159	1.500 X 1.45	=	2.175
P160	1.500 X 1.45	=	2.175
P161	1.500 X 1.45	=	2.175
P162	1.500 X 1.45	=	2.175
P163	1.500 X 1.45	=	2.175
P164	1.500 X 1.45	=	2.175
P165	1.500 X 1.45	=	2.175
P166	1.500 X 1.45	=	2.175
P167	1.500 X 1.45	=	2.175
P168	1.500 X 1.45	=	2.175
P169	1.500 X 1.45	=	2.175
P170	1.500 X 1.45	=	2.175
P171	1.500 X 1.45	=	2.175
P172	1.500 X 1.45	=	2.175
P173	1.500 X 1.45	=	2.175
P174	1.500 X 1.45	=	2.175
P175	1.500 X 1.45	=	2.175
P176	1.500 X 1.45	=	2.175
P177	1.500 X 1.45	=	2.175
P178	1.500 X 1.45	=	2.175
P179	1.500 X 1.45	=	2.175
P180	1.500 X 1.45	=	2.175
P181	1.500 X 1.45	=	2.175
P182	1.500 X 1.45	=	2.175
P183	1.500 X 1.45	=	2.175
P184	1.500 X 1.45	=	2.175
P185	1.500 X 1.45	=	2.175
P186	1.500 X 1.45	=	2.175
P187	1.500 X 1.45	=	2.175
P188	1.500 X 1.45	=	2.175
P189	1.500 X 1.45	=	2.175
P190	1.500 X 1.45	=	2.175
P191	1.500 X 1.45	=	2.175
P192	1.500 X 1.45	=	2.175
P193	1.500 X 1.45	=	2.175
P194	1.500 X 1.45	=	2.175
P195	1.500 X 1.45	=	2.175
P196	1.500 X 1.45	=	2.175
P197	1.500 X 1.45	=	2.175
P198	1.500 X 1.45	=	2.175
P199	1.500 X 1.45	=	2.175
P200	1.500 X 1.45	=	2.175
P201	1.500 X 1.45	=	2.175
P202	1.500 X 1.45	=	2.175
P203	1.500 X 1.45</		