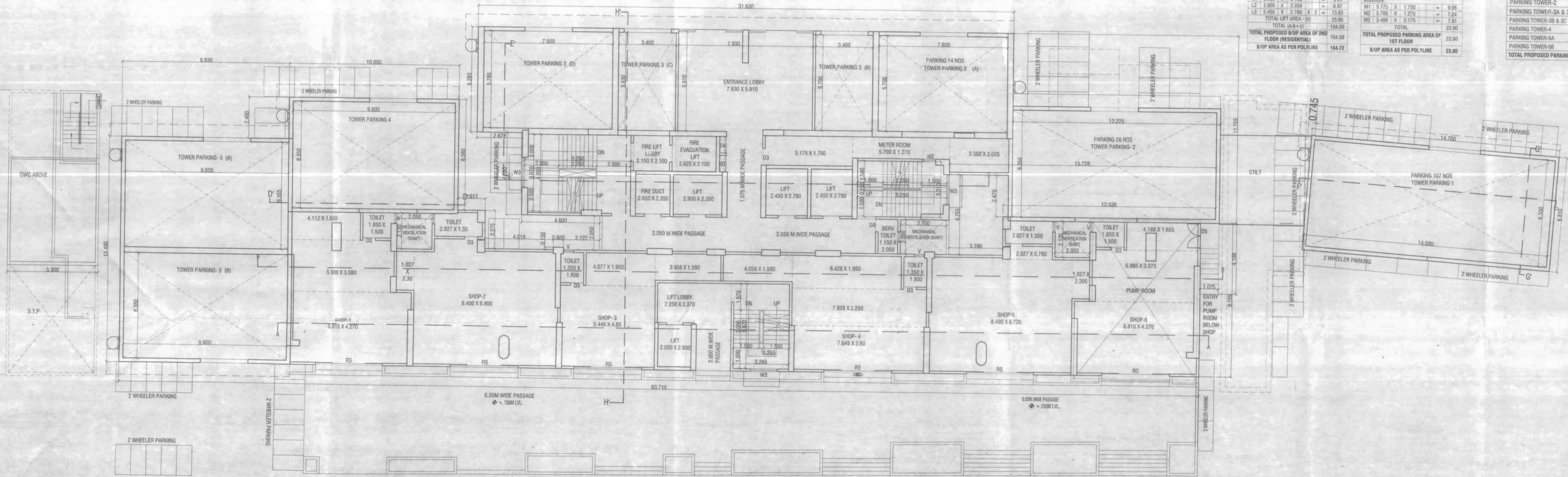


AREA LINE DIAGRAM OF GR. FLOOR PLAN
SCALE: 1:100



GROUND FLOOR PLAN (RETAIL)
SCALE: 1:100

B-UP AREA CALCULATION OF GR. FLOOR (COMMERCIAL)

ADDITION:		
C1	11.665 X 9.375	= 109.36
C2	4.017 X 7.100 X 2	= 57.04
C3	0.900 X 7.250 X 2	= 8.70
C4	21.500 X 7.100	= 152.65
C5	11.665 X 9.385	= 109.48
TOTAL ADDITION - (a)		435.95
DUCT AREA CALCULATIONS:		
D1	2.850 X 2.150 X 2	= 8.73
D2	2.000 X 2.500	= 5.00
TOTAL DUCT AREA - (b)		13.73
TOTAL (a-b)		422.22
TOTAL PROPOSED B/UP AREA OF GR. FLOOR (COMMERCIAL)		422.22
B/UP AREA AS PER POLYLINE		422.23

B-UP AREA CALCULATION OF GR. FLOOR (RESIDENTIAL)

ADDITION:		
R1	4.600 X 5.150	= 23.68
R2	1.022 X 7.200	= 7.36
R3	0.863 X 7.150	= 6.17
R4	5.250 X 5.140	= 27.20
R5	2.850 X 2.050	= 5.84
R6	5.700 X 3.610	= 20.58
R7	2.978 X 6.275	= 18.69
R8	5.882 X 6.065	= 35.48
TOTAL ADDITION - (a)		107.02
DUCT AREA CALCULATIONS:		
D1	0.355 X 0.975 X 2	= 0.69
D2	2.850 X 2.350	= 6.68
D3	2.150 X 0.470	= 1.01
TOTAL DUCT AREA - (b)		8.38
TOTAL (a-b)		98.64
TOTAL PROPOSED B/UP AREA OF GR. FLOOR (RESIDENTIAL)		98.64
B/UP AREA AS PER POLYLINE		98.64

PARKING AREA CALCULATION OF GR. FLOOR

ADDITION:		
PT1	9.830 X 13.490	= 132.61
PT2	10.050 X 6.580	= 66.13
PT3	2.677 X 6.260	= 16.81
PT4	8.823 X 6.010	= 53.03
PT5	3.400 X 6.000	= 20.40
PT6	11.700 X 6.260	= 73.45
PT7	12.225 X 1.935	= 23.66
PT8	11.357 X 4.645	= 52.75
PT9	1.988 X 4.875	= 9.65
PT10	14.700 X 6.810	= 100.11
TOTAL		525.29
TOTAL PROPOSED PARKING AREA OF GR. FLOOR		525.29
B/UP AREA AS PER POLYLINE		525.31

METER ROOM CALCULATION OF GR. FLOOR

ADDITION:		
M1	5.175 X 1.750	= 9.06
M2	5.700 X 1.270	= 7.24
M3	3.498 X 2.175	= 7.61
TOTAL		23.90
TOTAL PROPOSED PARKING AREA OF 1ST FLOOR		33.90
B/UP AREA AS PER POLYLINE		33.90

PROPOSED PARKING STATEMENT

TOWER NAME	4 WHEELER NO OF CARS
PARKING TOWER-1	107
PARKING TOWER-2	26
PARKING TOWER-3A & 3D	14 + 14 = 28
PARKING TOWER-3B & 3C	13 + 13 = 26
PARKING TOWER-4	20
PARKING TOWER-5A	20
PARKING TOWER-5B	20
TOTAL PROPOSED PARKING	247

BUILT UP AREA SUMMARY - BLDG. F

FLOORS	BUA	REQUIRED REFUGE	PROVIDED REFUGE	100% FREE REFUGE	EXCESS REFUGE	TOTAL BUA	AREA
GROUND - COMM. FLOOR	422.230					422.230	
1ST COMMERCIAL	432.140					432.140	
2ND COMMERCIAL	432.140					432.140	
GROUND - RES. FLOOR	164.720					164.720	
1ST RES. FLOOR	114.230					114.230	
2ND RES. FLOOR	88.230					88.230	
3RD FLOOR	568.62					568.620	
SERVICE FLOOR	0.00					0.000	517.06
4TH FLOOR	644.78					644.780	
5TH FLOOR	644.78					644.780	
6TH FLOOR	591.90	30.90	52.88	61.80	0.00	591.900	
7TH FLOOR	644.78					644.780	
8TH FLOOR	644.78					644.780	
9TH FLOOR	644.78					644.780	
10TH FLOOR	597.99	30.90	77.19	61.80	15.39	582.890	
11TH FLOOR	644.78					644.780	
12TH FLOOR	644.78					644.780	
13TH FLOOR	644.78					644.780	
14TH FLOOR	644.78					644.780	
15TH FLOOR	597.99	30.90	77.19	61.80	15.39	582.890	
16TH FLOOR	644.78					644.780	
17TH FLOOR	644.78					644.780	
18TH FLOOR	644.78					644.780	
19TH FLOOR	644.78					644.780	
20TH FLOOR	597.99	30.90	77.19	61.80	15.39	582.890	
21ST FLOOR	644.78					644.780	
22ND FLOOR	644.78					644.780	
23TH FLOOR	644.78					644.780	
24TH FLOOR	644.78					644.780	
25TH FLOOR	597.99	30.90	77.19	61.80	15.39	582.890	
26TH FLOOR	644.78					644.780	
27TH FLOOR	644.78					644.780	
28TH FLOOR	644.78					644.780	
RECREATIONAL FLOOR	8.33					8.330	660.09
TOTAL	17968.50	154.50	361.64	300.00	61.56	18030.060	1177.150

Plans are approved Subject to conditions Prescribed in Permit No. 48, Sola/0069/114 TMCTD-DPTPS/4271/Revised-29/12/2022

Supra Engineer (TDO)
The City of Thane



सावधान
"सर्वत्र गणनासुधार बंधकाम न कराम तसेच एकाच विवरण नियमानुसार आरंभक व्हा पर्यायान्य न घेता बांधकाम करार करण, महाराष्ट्र शासिक व नगर न्यून अधिनियमद्वारे कलम 43 अनुसार दखनायब मुक्ता आहे. न्यायादी जास्तत मान्य 3 चर्चे करत व रु. 5000/- देव होत शकतो"

SCHEDULE OF DOORS & WINDOWS

SIZE	TYPE	DESCRIPTION
1.00 X 2.45	D	T.W. FRAMED WITH PANNELED DOOR
0.75 X 2.15	D2	MARBLE FRAME AL. DOOR
3.00 X 2.45	W	ALUMINUM FRAMED WITH SLIDING WINDOW
1.50 X 1.55	W1	ALUMINUM FRAMED WITH SLIDING WINDOW
2.25 X 2.45	W2	ALUMINUM FRAMED WITH SLIDING WINDOW
0.84 X 2.35	W3	ALUMINUM FRAMED WITH SLIDING WINDOW
0.75 X 1.50	V	VENTILATOR
0.60 X 1.25	V	VENTILATOR

RERA CARPET AREA STATEMENT

FLOOR	NO. OF FLOOR	NO. OF SHOP	RERA CARPET AREA (IN SQ.M)
GROUND FLOOR	1	1	60.02
		2	66.79
		3	44.70
		4	60.92
		5	65.68
		6	60.88
TOTAL RERA CARPET AREA		359.99 SQ.M	

RERA CARPET AREA STATEMENT

FLOOR	NO. OF FLOOR	NO. OF SHOP	RERA CARPET AREA (IN SQ.M)
1ST & 2ND COMMERCIAL FLOOR	2	1	17.16
		2	18.15
		3	25.93
		4	15.89
		5	28.50
		6	
		7	19.90
		8	19.99
		9	15.69
		10	26.93
		11	18.10
		12	18.17
TOTAL RERA CARPET AREA		225.21 SQ.M	
TOTAL RERA CARPET AREA = 225.21 X 2 FLOORS =		450.42 SQ.M	

RERA CARPET AREA STATEMENT

FLOOR	NO. OF FLOOR	NO. OF PLATS	RERA CARPET AREA (IN SQ.M)
4TH, 5TH & 7TH TO 9TH, 11TH TO 16TH, 18TH TO 20TH, 22ND TO 24TH & 26TH TO 28TH TYPICAL FLOOR	20	1	88.15
		2	65.87
		3	65.67
		4	88.15
		5	69.20
		6	68.30
6TH, 10TH, 15TH & 20TH & 25TH TYPICAL FLOOR	5	1	88.15
		2	65.87
		3	65.67
		4	88.15
		5	69.20
6			

DESCRIPTION OF PROPOSAL:
PROPOSED RESIDENTIAL COMPLEX ON PLOT BEARING S. NO. 312/1A, 312/1B, 312/1C, 312/1D, 312/1E, 312/1F, 312/1G, 312/1H, 312/1I, 312/1J, 312/1K, 312/1L, 312/1M, 312/1N, 312/1O, 312/1P, 312/1Q, 312/1R, 312/1S, 312/1T, 312/1U, 312/1V, 312/1W, 312/1X, 312/1Y, 312/1Z, 312/1AA, 312/1AB, 312/1AC, 312/1AD, 312/1AE, 312/1AF, 312/1AG, 312/1AH, 312/1AI, 312/1AJ, 312/1AK, 312/1AL, 312/1AM, 312/1AN, 312/1AO, 312/1AP, 312/1AQ, 312/1AR, 312/1AS, 312/1AT, 312/1AU, 312/1AV, 312/1AW, 312/1AX, 312/1AY, 312/1AZ, 312/1BA, 312/1BB, 312/1BC, 312/1BD, 312/1BE, 312/1BF, 312/1BG, 312/1BH, 312/1BI, 312/1BJ, 312/1BK, 312/1BL, 312/1BM, 312/1BN, 312/1BO, 312/1BP, 312/1BQ, 312/1BR, 312/1BS, 312/1BT, 312/1BU, 312/1BV, 312/1BW, 312/1BX, 312/1BY, 312/1BZ, 312/1CA, 312/1CB, 312/1CC, 312/1CD, 312/1CE, 312/1CF, 312/1CG, 312/1CH, 312/1CI, 312/1CJ, 312/1CK, 312/1CL, 312/1CM, 312/1CN, 312/1CO, 312/1CP, 312/1CQ, 312/1CR, 312/1CS, 312/1CT, 312/1CU, 312/1CV, 312/1CW, 312/1CX, 312/1CY, 312/1CZ, 312/1DA, 312/1DB, 312/1DC, 312/1DD, 312/1DE, 312/1DF, 312/1DG, 312/1DH, 312/1DI, 312/1DJ, 312/1DK, 312/1DL, 312/1DM, 312/1DN, 312/1DO, 312/1DP, 312/1DQ, 312/1DR, 312/1DS, 312/1DT, 312/1DU, 312/1DV, 312/1DW, 312/1DX, 312/1DY, 312/1DZ, 312/1EA, 312/1EB, 312/1EC, 312/1ED, 312/1EE, 312/1EF, 312/1EG, 312/1EH, 312/1EI, 312/1EJ, 312/1EK, 312/1EL, 312/1EM, 312/1EN, 312/1EO, 312/1EP, 312/1EQ, 312/1ER, 312/1ES, 312/1ET, 312/1EU, 312/1EV, 312/1EW, 312/1EX, 312/1EY, 312/1EZ, 312/1FA, 312/1FB, 312/1FC, 312/1FD, 312/1FE, 312/1FF, 312/1FG, 312/1FH, 312/1FI, 312/1FJ, 312/1FK, 312/1FL, 312/1FM, 312/1FN, 312/1FO, 312/1FP, 312/1FQ, 312/1FR, 312/1FS, 312/1FT, 312/1FU, 312/1FV, 312/1FW, 312/1FX, 312/1FY, 312/1FZ, 312/1GA, 312/1GB, 312/1GC, 312/1GD, 312/1GE, 312/1GF, 312/1GG, 312/1GH, 312/1GI, 312/1GJ, 312/1GK, 312/1GL, 312/1GM, 312/1GN, 312/1GO, 312/1GP, 312/1GQ, 312/1GR, 312/1GS, 312/1GT, 312/1GU, 312/1GV, 312/1GW, 312/1GX, 312/1GY, 312/1GZ, 312/1HA, 312/1HB, 312/1HC, 312/1HD, 312/1HE, 312/1HF, 312/1HG, 312/1HH, 312/1HI, 312/1HJ, 312/1HK, 312/1HL, 312/1HM, 312/1HN, 312/1HO, 312/1HP, 312/1HQ, 312/1HR, 312/1HS, 312/1HT, 312/1HU, 312/1HV, 312/1HW, 312/1HX, 312/1HY, 312/1HZ, 312/1IA, 312/1IB, 312/1IC, 312/1ID, 312/1IE, 312/1IF, 312/1IG, 312/1IH, 312/1II, 312/1IJ, 312/1IK, 312/1IL, 312/1IM, 312/1IN, 312/1IO, 312/1IP, 312/1IQ, 312/1IR, 312/1IS, 312/1IT, 312/1IU, 312/1IV, 312/1IW, 312/1IX, 312/1IY, 312/1IZ, 312/1JA, 312/1JB, 312/1JC, 312/1JD, 312/1JE, 312/1JF, 312/1JG, 312/1JH, 312/1JI, 312/1JJ, 312/1JK, 312/1JL, 312/1JM, 312/1JN, 312/1JO, 312/1JP, 312/1JQ, 312/1JR, 312/1JS, 312/1JT, 312/1JU, 312/1JV, 312/1JW, 312/1JX, 312/1JY, 312/1JZ, 312/1KA, 312/1KB, 312/1KC, 312/1KD, 312/1KE, 312/1KF, 312/1KG, 312/1KH, 312/1KI, 312/1KJ, 312/1KK, 312/1KL, 312/1KM, 312/1KN, 312/1KO, 312/1KP, 312/1KQ, 312/1KR, 312/1KS, 312/1KT, 312/1KU, 312/1KV, 312/1KW, 312/1KX, 312/1KY, 312/1KZ, 312/1LA, 312/1LB, 312/1LC, 312/1LD, 312/1LE, 312/1LF, 312/1LG, 312/1LH, 312/1LI, 312/1LJ, 312/1LK, 312/1LL, 312/1LM, 312/1LN, 312/1LO, 312/1LP, 312/1LQ, 312/1LR, 312/1LS, 312/1LT, 312/1LU, 312/1LV, 312/1LW, 312/1LX, 312/1LY, 312/1LZ, 312/1MA, 312/1MB, 312/1MC, 312/1MD, 312/1ME, 312/1MF, 312/1MG, 312/1MH, 312/1MI, 312/1MJ, 312/1MK, 312/1ML, 312/1MM, 312/1MN, 312/1MO, 312/1MP, 312/1MQ, 312/1MR, 312/1MS, 312/1MT, 312/1MU, 312/1MV, 312/1MW, 312/1MX, 312/1MY, 312/1MZ, 312/1NA, 312/1NB, 312/1NC, 312/1ND, 312/1NE, 312/1NF, 312/1NG, 312/1NH, 312/1NI, 312/1NJ, 312/1NK, 312/1NL, 312/1NM, 312/1NN, 312/1NO, 312/1NP, 312/1NQ, 312/1NR, 312/1NS, 312/1NT, 312/1NU, 312/1NV, 312/1NW, 312/1NX, 312/1NY, 312/1NZ, 312/1OA, 312/1OB, 312/1OC, 312/1OD, 312/1OE, 312/1OF, 312/1OG, 312/1OH, 312/1OI, 312/1OJ, 312/1OK, 312/1OL, 312/1OM, 312/1ON, 312/1OO, 312/1OP, 312/1OQ, 312/1OR, 312/1OS, 312/1OT, 312/1OU, 312/1OV, 312/1OW, 312/1OX, 312/1OY, 312/1OZ, 312/1PA, 312/1PB, 312/1PC, 312/1PD, 312/1PE, 312/1PF, 312/1PG, 312/1PH, 312/1PI, 312/1PJ, 312/1PK, 312/1PL, 312/1PM, 312/1PN, 312/1PO, 312/1PP, 312/1PQ, 312/1PR, 312/1PS, 312/1PT, 312/1PU, 312/1PV, 312/1PW, 312/1PX, 312/1PY, 312/1PZ, 312/1QA, 312/1QB, 312/1QC, 312/1QD, 312/1QE, 312/1QF, 312/1QG, 312/1QH, 312/1QI, 312/1QJ, 312/1QK, 312/1QL, 312/1QM, 312/1QN, 312/1QO, 312/1QP, 312/1QQ, 312/1QR, 312/1QS, 312/1QT, 312/1QU, 312/1QV, 312/1QW, 312/1QX, 312/1QY, 312/1QZ, 312/1RA, 312/1RB, 312/1RC, 312/1RD, 312/1RE, 312/1RF, 312/1RG, 312/1RH, 312/1RI, 312/1RJ, 312/1RK, 312/1RL, 312/1RM, 312/1RN, 312/1RO, 312/1RP, 312/1RQ, 312/1RR, 312/1RS, 312/1RT, 312/1RU, 312/1RV, 312/1RW, 312/1RX, 312/1RY, 312/1RZ, 312/1SA, 312/1SB, 312/1SC, 312/1SD, 312/1SE, 312/1SF, 312/1SG, 312/1SH, 312/1SI, 312/1SJ, 312/1SK, 312/1SL, 312/1SM, 312/1SN, 312/1SO, 312/1SP, 312/1SQ, 312/1SR, 312/1SS, 312/1ST, 312/1SU, 312/1SV, 312/1SW, 312/1SX, 312/1SY, 312/1SZ, 312/1TA, 312/1TB, 312/1TC, 312/1TD, 312/1TE, 312/1TF, 312/1TG, 312/1TH, 312/1TI, 312/1TJ, 312/1TK, 312/1TL, 312/1TM, 312/1TN, 312/1TO, 312/1TP, 312/1TQ, 312/1TR, 312/1TS, 312/1TT, 312/1TU, 312/1TV, 312/1TW, 312/1TX, 312/1TY, 312/1TZ, 312/1UA, 312/1UB, 312/1UC, 312/1UD, 312/1UE, 312/1UF, 312/1UG, 312/1UH, 312/1UI, 312/1UJ, 312/1UK, 312/1UL, 312/1UM, 312/1UN, 312/1UO, 312/1UP, 312/1UQ, 312/1UR, 312/1US, 312/1UT, 312/1UU, 312/1UV, 312/1UW, 312/1UX, 312/1UY, 312/1UZ, 312/1VA, 312/1VB, 312/1VC, 312/1VD, 312/1VE, 312/1VF, 312/1VG, 312/1VH, 312/1VI, 312/1VJ, 312/1VK, 312/1VL, 312/1VM, 312/1VN, 312/1VO,