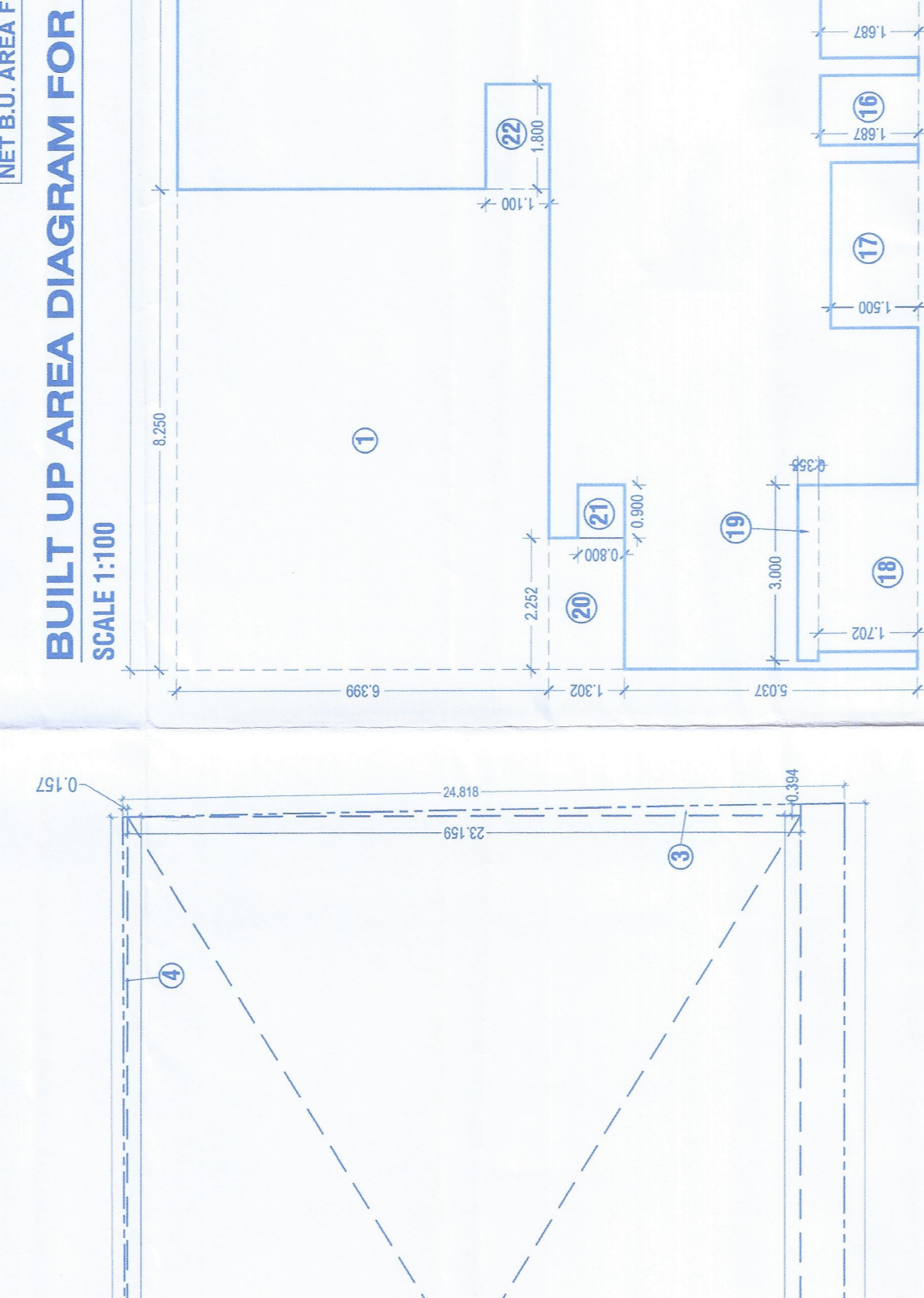
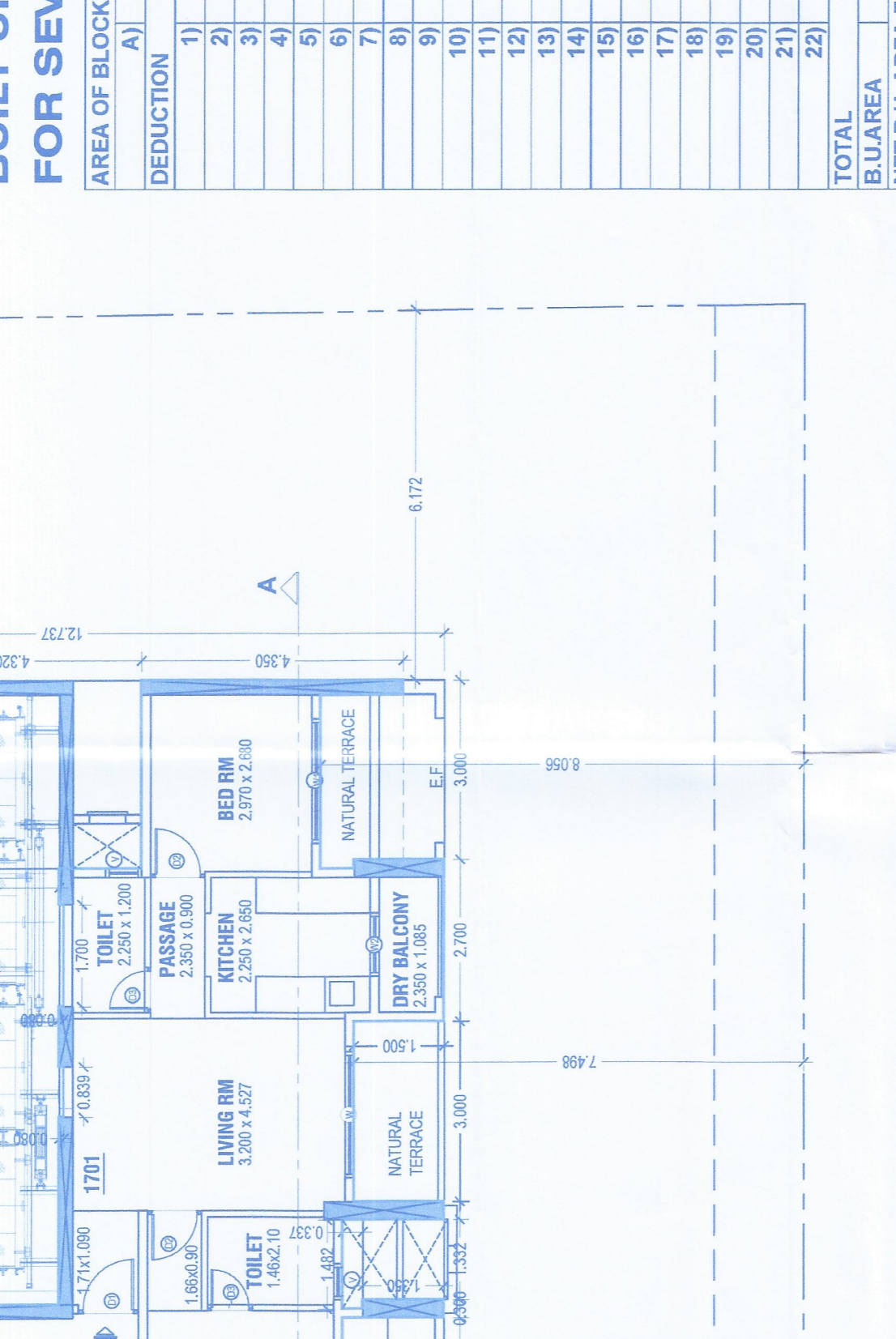


APPROVED BY: *(Signature)*  
 PROJECT MANAGER  
 ARCHITECTS & DESIGNERS  
 APPROVED BY: *(Signature)*  
 CHAIRMAN  
 SOCIETY

PROPOSAL FOR AMENDED APPROVAL \*

**BUILT UP AREA CALCULATION FOR TWELFTH TO SIXTEENTH FLOOR**

AREA OF BLOCK	27.812 X	12.737	=	351.684 SQ.M.	
1) 6.591 X	6.591 X	1	=	43.741	
2) 11.522 X	3.380 X	1	=	38.944	
3) 4.060 X	1.770 X	1	=	7.186	
4) 7.852 X	2.950 X	1	=	23.153	
5) 1.700 X	0.690 X	1	=	1.170	
6) 1.700 X	0.690 X	1	=	1.170	
7) 3.150 X	4.320 X	1	=	13.608	
8) 2.520 X	0.652 X	1	=	1.641	
9) 5.040 X	0.652 X	1	=	3.282	
10) 1.482 X	0.527 X	1	=	0.779	
11) 1.331 X	1.390 X	1	=	1.850	
12) 3.155 X	1.697 X	1	=	5.352	
13) 1.200 X	1.798 X	1	=	2.158	
14) 1.331 X	1.697 X	1	=	2.254	
15) 1.331 X	1.697 X	1	=	2.254	
16) 2.520 X	1.362 X	1	=	3.432	
17) 0.900 X	0.890 X	1	=	0.801	
18) 1.800 X	1.100 X	1	=	1.980	
19) 0.900 X	0.890 X	1	=	0.801	
20) 1.800 X	1.100 X	1	=	1.980	
21) 0.900 X	0.890 X	1	=	0.801	
22) 1.800 X	1.100 X	1	=	1.980	
TOTAL	351.684	-	175.162	=	176.522 SQ.M.
BLU AREA	351.684	-	175.162	=	176.522 SQ.M.
NET B.U. AREA FOR 17TH FLOOR				=	176.522 SQ.M.



**AREA DIAGRAM FOR ROAD WIDENING**

AREA OF BLOCK	27.812 X	12.737	=	351.684 SQ.M.	
1) 6.591 X	6.591 X	1	=	43.741	
2) 11.522 X	3.380 X	1	=	38.944	
3) 4.060 X	1.770 X	1	=	7.186	
4) 7.852 X	2.950 X	1	=	23.153	
5) 1.700 X	0.690 X	1	=	1.170	
6) 1.700 X	0.690 X	1	=	1.170	
7) 3.150 X	4.320 X	1	=	13.608	
8) 2.520 X	0.652 X	1	=	1.641	
9) 5.040 X	0.652 X	1	=	3.282	
10) 1.482 X	0.527 X	1	=	0.779	
11) 1.331 X	1.390 X	1	=	1.850	
12) 3.155 X	1.697 X	1	=	5.352	
13) 1.200 X	1.798 X	1	=	2.158	
14) 1.331 X	1.697 X	1	=	2.254	
15) 1.331 X	1.697 X	1	=	2.254	
16) 2.520 X	1.362 X	1	=	3.432	
17) 0.900 X	0.890 X	1	=	0.801	
18) 1.800 X	1.100 X	1	=	1.980	
19) 0.900 X	0.890 X	1	=	0.801	
20) 1.800 X	1.100 X	1	=	1.980	
21) 0.900 X	0.890 X	1	=	0.801	
22) 1.800 X	1.100 X	1	=	1.980	
TOTAL	351.684	-	175.162	=	176.522 SQ.M.
BLU AREA	351.684	-	175.162	=	176.522 SQ.M.
NET B.U. AREA FOR 17TH FLOOR				=	176.522 SQ.M.

