

**8TH REFUGEE FLOOR CARPET AREA STATEMENT WING - A**

**8TH REFUGEE FLOOR CARPET AREA STATEMENT WING - B**

**8TH REFUGEE FLOOR CARPET AREA STATEMENT (FLAT No.) WING A (F. NO. 7-3)**

**8TH REFUGEE FLOOR CARPET AREA STATEMENT (FLAT No.) WING A (F. NO. 4)**

**8TH REFUGEE FLOOR CARPET AREA STATEMENT (FLAT No.) WING B (F. NO. 7)**

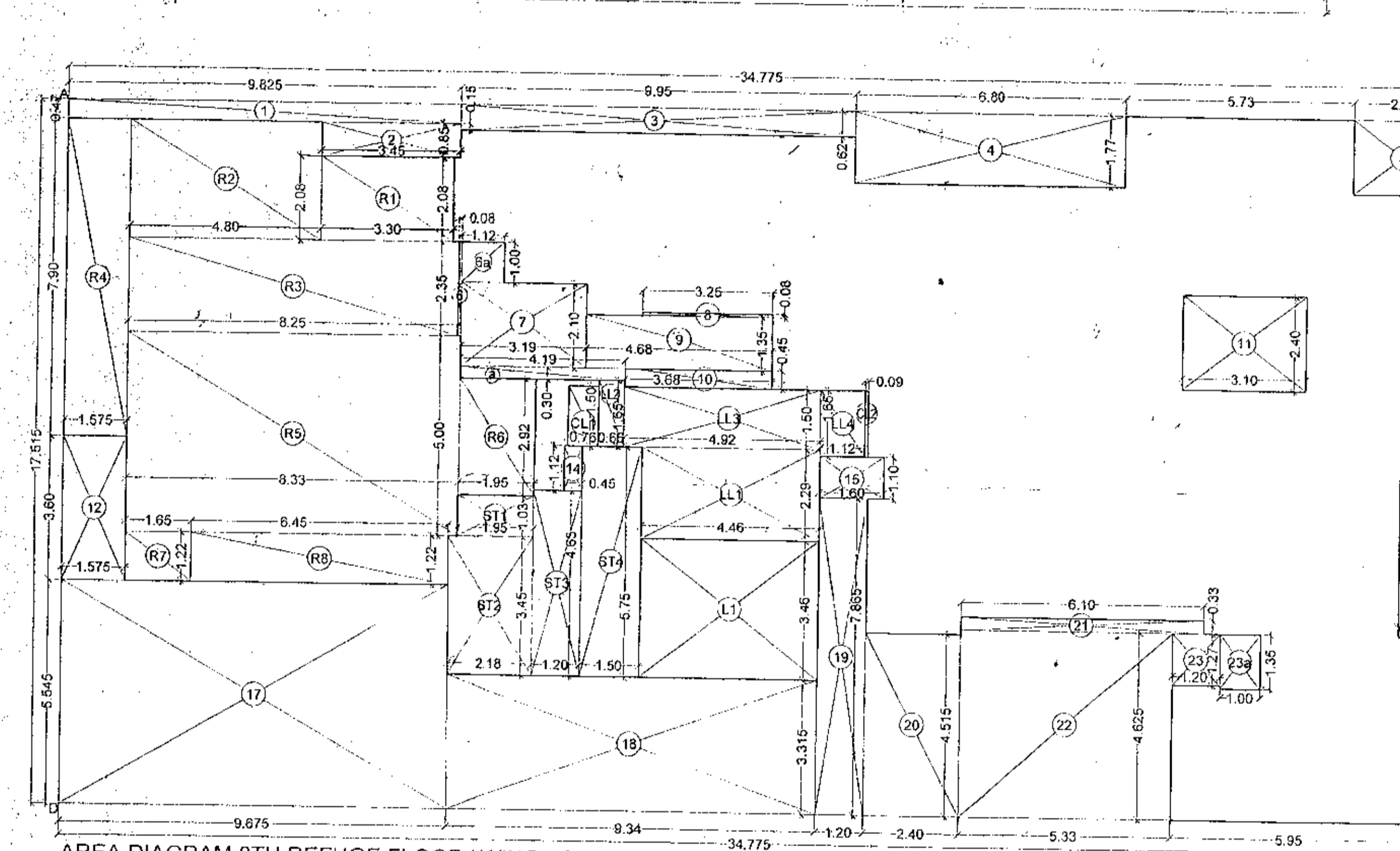
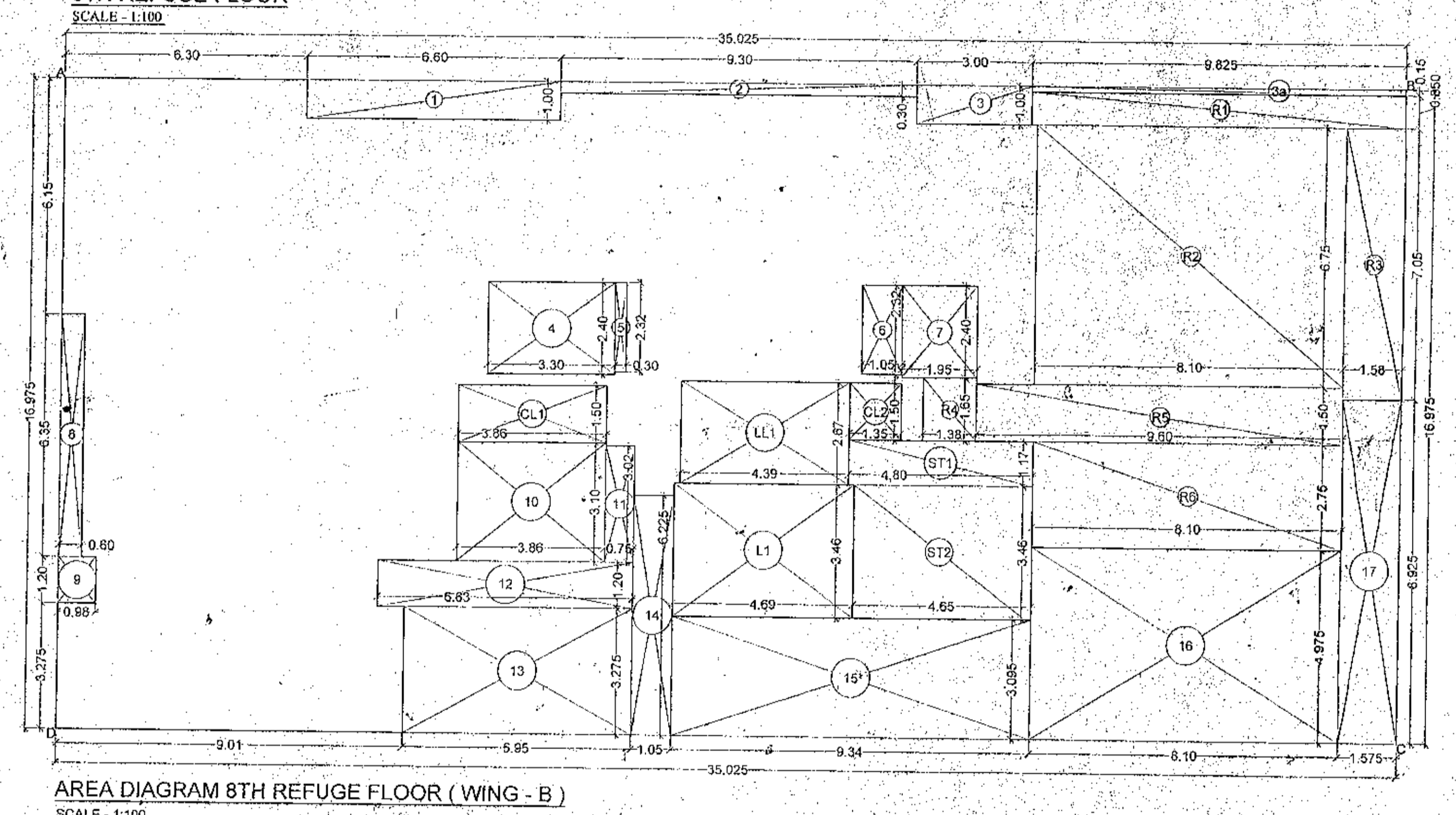
**8TH REFUGEE FLOOR CARPET AREA STATEMENT (FLAT No.) WING B (F. NO. 6)**

**8TH REFUGEE FLOOR CARPET AREA STATEMENT (FLAT No.) WING C (F. NO. 7)**

**8TH REFUGEE FLOOR CARPET AREA STATEMENT (FLAT No.) WING C (F. NO. 6)**

**8TH REFUGEE FLOOR CARPET AREA STATEMENT (FLAT No.) WING D (F. NO. 7)**

**8TH REFUGEE FLOOR CARPET AREA STATEMENT (FLAT No.) WING D (F. NO. 6)**



**REFUGEE AREA CALCULATION - (8TH FLOOR) (WING C)**

REFUGEE AREA REQUIRED = 4% X TOTAL BUILT UP AREA  
(9716 TO 13TH, 14TH & 15TH + REFUGEE (8TH) FLOOR)

REFUGEE AREA REQUIRED = 109.95 SQM

REFUGEE AREA PROPOSED = 109.95 SQM

REFUGEE AREA EXCESS = 7.92 SQM

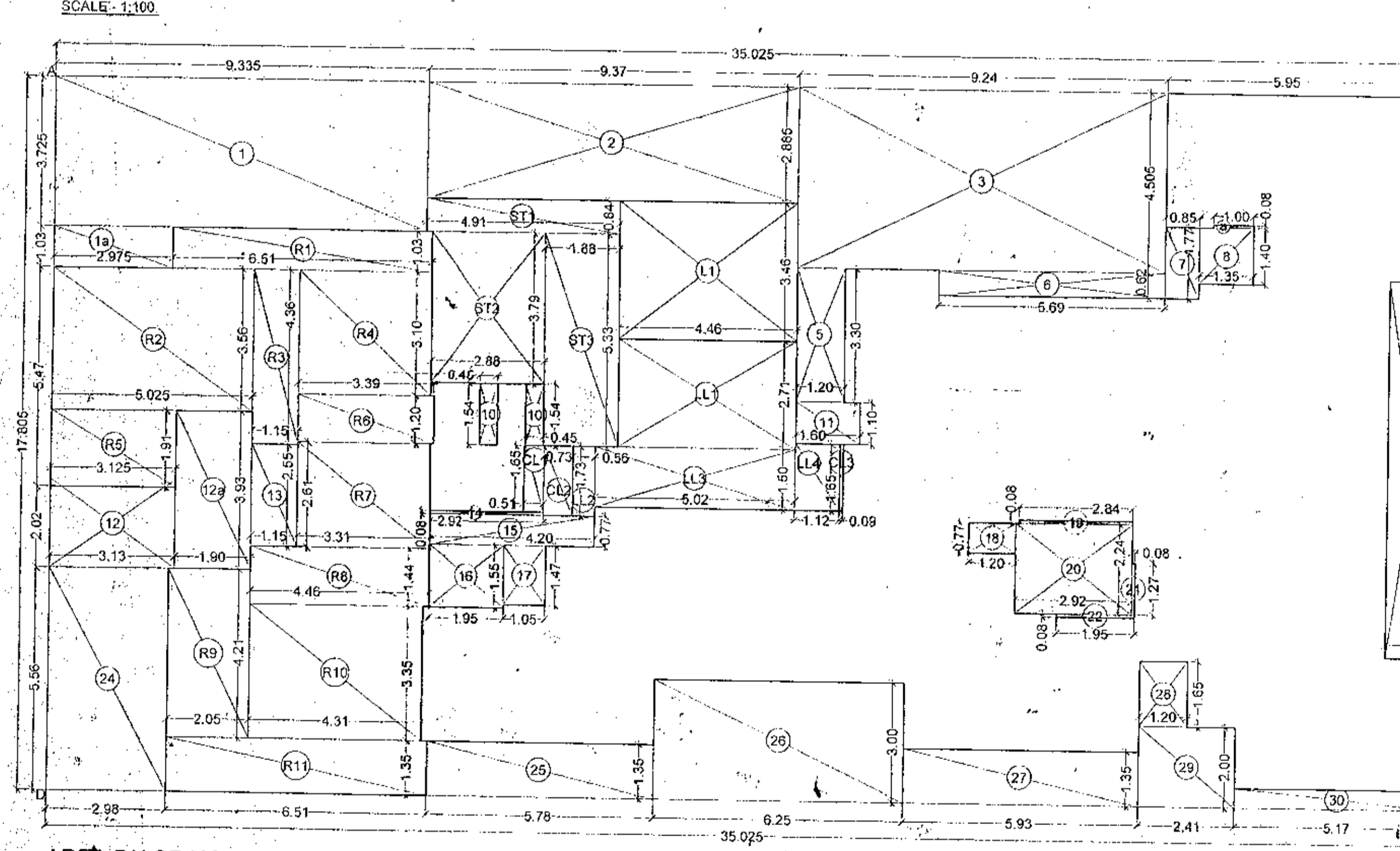
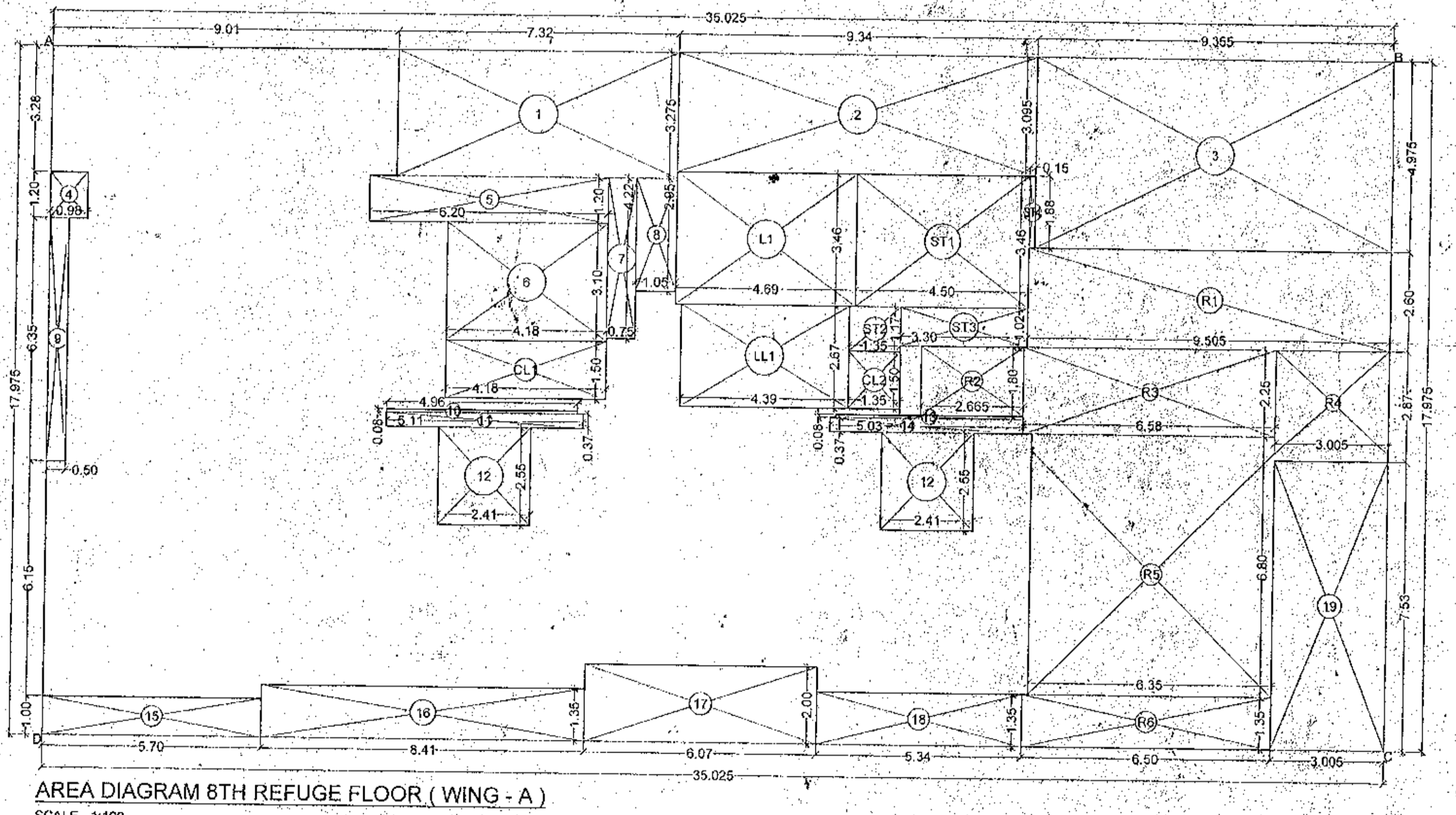
**REFUGEE AREA CALCULATION - (8TH FLOOR) (WING D)**

REFUGEE AREA REQUIRED = 4% X TOTAL BUILT UP AREA  
(9716 TO 15TH + REFUGEE (8TH) FLOOR)

REFUGEE AREA REQUIRED = 94.81 SQM

REFUGEE AREA PROPOSED = 94.81 SQM

REFUGEE AREA EXCESS = 2.02 SQM



**BUILT-UP AREA STATEMENT - (WING - A)**

**8TH REFUGEE FLOOR**

AREA OF BLOCK (ABCD) = 35.025 X 17.975 = 629.97 SQM

STANDARD DEDUCTIONS -

1. 7.32 X 3.275 = 23.97 SQM

2. 8.34 X 3.095 = 25.61 SQM

3. 8.95 X 4.975 = 44.53 SQM

4. 0.98 X 1.20 = 1.18 SQM

5. 8.20 X 1.20 = 9.84 SQM

6. 4.18 X 3.10 = 12.96 SQM

7. 0.75 X 4.22 = 3.17 SQM

8. 1.52 X 2.90 = 4.41 SQM

9. 0.50 X 0.50 = 0.25 SQM

10. 5.11 X 0.37 = 1.90 SQM

11. 2.41 X 2.26 X 2 = 10.94 SQM

12. 4.88 X 0.50 = 2.44 SQM

13. 5.03 X 0.37 = 1.86 SQM

14. 3.70 X 1.00 = 3.70 SQM

15. 8.41 X 1.35 = 11.35 SQM

16. 5.07 X 2.00 = 10.14 SQM

17. 5.34 X 1.35 = 7.21 SQM

18. 3.09 X 7.53 = 23.27 SQM

**CONSTRUCTED AREA - A - I**

626.67 - 206.30 = 420.37 SQM

**STAIRCASE, LIFT & CONNECTING LOBBY AREA CALCULATION**

ST1, 4.50 X 3.45 = 15.57 SQM

ST2, 1.85 X 1.17 = 2.16 SQM

ST3, 3.30 X 1.02 = 3.37 SQM

ST4, 0.15 X 1.88 = 0.28 SQM

ST5, 4.89 X 3.46 = 16.92 SQM

ST6, 4.39 X 2.67 = 11.72 SQM

ST7, 4.18 X 1.50 = 6.27 SQM

ST8, 1.35 X 1.50 = 2.03 SQM

**REFUGEE AREA CALCULATION**

R1, 9.50 X 2.60 = 24.71 SQM

R2, 2.65 X 1.80 = 4.77 SQM

R3, 6.59 X 2.25 = 14.81 SQM

R4, 3.05 X 2.37 = 7.23 SQM

R5, 4.38 X 8.80 = 38.54 SQM

R6, 5.60 X 1.35 = 7.56 SQM

**SALE BUILT UP AREA - B - II**

427.27 - 57.05 = 370.22 SQM

**C - EXCESS REFUGEE**

261.32 - 1.025 = 260.29 SQM

**BUILT-UP AREA STATEMENT - (WING - B)**

**8TH REFUGEE FLOOR**

AREA OF BLOCK (ABCD) = 35.025 X 16.975 = 594.55 SQM

STANDARD DEDUCTIONS -

1. 6.00 X 1.00 = 6.00 SQM

2. 9.30 X 0.30 = 2.79 SQM

3. 3.00 X 1.00 = 3.00 SQM

3b. 8.825 X 0.15 = 1.32 SQM

4. 3.30 X 2.40 = 7.92 SQM

5. 0.30 X 2.32 = 0.70 SQM

6. 1.09 X 2.32 = 2.53 SQM

7. 1.99 X 2.40 = 4.78 SQM

8. 0.50 X 0.50 = 0.25 SQM

9. 0.98 X 1.20 = 1.18 SQM

10. 3.96 X 3.10 = 12.28 SQM

11. 0.75 X 3.28 = 2.47 SQM

12. 6.63 X 1.00 = 6.63 SQM

13. 6.95 X 3.275 = 22.76 SQM

14. 1.06 X 6.225 = 6.62 SQM

15. 8.34 X 0.95 = 7.92 SQM

16. 8.10 X 8.75 = 70.88 SQM

17. 1.75 X 0.925 = 1.62 SQM

**STAIRCASE, LIFT & CONNECTING LOBBY AREA CALCULATION**

ST1, 4.80 X 1.17 = 5.62 SQM

ST2, 4.89 X 3.46 = 16.92 SQM

ST3, 4.39 X 2.67 = 11.72 SQM

ST4, 3.86 X 1.50 = 5.79 SQM

ST5, 4.18 X 1.50 = 6.27 SQM

ST6, 1.35 X 1.50 = 2.03 SQM

**REFUGEE AREA CALCULATION**

R1, 9.825 X 0.85 = 8.35 SQM

R2, 8.10 X 3.75 = 30.38 SQM

R3, 1.58 X 1.05 = 1.66 SQM

R4, 1.89 X 1.00 = 1.89 SQM

R5, 9.60 X 1.50 = 14.40 SQM

R6, 8.10 X 3.75 = 30.38 SQM

R7, 8.10 X 3.75 = 30.38 SQM

R8, 8.10 X 3.75 = 30.38 SQM

R9, 8.10 X 3.75 = 30.38 SQM

R10, 8.10 X 3.75 = 30.38 SQM

R11, 8.10 X 3.75 = 30.38 SQM

R12, 8.10 X 3.75 = 30.38 SQM

R13, 8.10 X 3.75 = 30.38 SQM

R14, 8.10 X 3.75 = 30.38 SQM

R15, 8.10 X 3.75 = 30.38 SQM

R16, 8.10 X 3.75 = 30.38 SQM

R17, 8.10 X 3.75 = 30.38 SQM

R18, 8.10 X 3.75 = 30.38 SQM

R19, 8.10 X 3.75 = 30.38 SQM

R20, 8.10 X 3.75 = 30.38 SQM

R21, 8.10 X 3.75 = 30.38 SQM

R22, 8.10 X 3.75 = 30.38 SQM

R23, 8.10 X 3.75 = 30.38 SQM

R24, 8.10 X 3.75 = 30.38 SQM

R25, 8.10 X 3.75 = 30.38 SQM

R26, 8.10 X 3.75 = 30.38 SQM

R27, 8.10 X 3.75 = 30.38 SQM

R28, 8.10 X 3.75 = 30.38 SQM

R29, 8.10 X 3.75 = 30.38 SQM

R30, 8.10 X 3.75 = 30.38 SQM

**SALE BUILT UP AREA - B - II**

594.55 - 91.41 = 503.14 SQM

**TOTAL SALE PSL - C - EXCESS REFUGEE**

503.14 - 0.01 = 503.13 SQM

**CONSTRUCTED AREA - A - I**

494.55 - 194.08 = 300.47 SQM

**REFUGEE AREA CALCULATION - (8TH FLOOR) (WING B)**

REFUGEE AREA REQUIRED = 4% X TOTAL BUILT UP AREA (9716 TO 15TH + REFUGEE (8TH) FLOOR)

REFUGEE AREA REQUIRED = 113.12 SQM

REFUGEE AREA PROPOSED = 113.12 SQM

REFUGEE AREA EXCESS = 0.91 SQM

**BUILT-UP AREA STATEMENT - (WING - C)**

**8TH REFUGEE FLOOR**

AREA OF BLOCK (ABCD) = 35.025 X 17.805 = 623.82 SQM

STANDARD DEDUCTIONS -

1. 9.35 X 3.275 = 30.72 SQM

2. 8.75 X 1.00 = 8.75 SQM

3. 9.37 X 2.885 = 27.03 SQM

4. 1.10 X 1.275 = 1.40 SQM

5. 1.20 X 1.30 = 1.56 SQM

6. 5.59 X 0.62 = 3.47 SQM

7. 0.85 X 1.77 = 1.50 SQM

8. 1.00 X 0.08 = 0.08 SQM

9. 1.85 X 1.40 = 2.59 SQM

10. 0.33 X 3.35 = 1.11 SQM

10. 0.45 X 1.54 X 2 = 1.38 SQM

11. 1.90 X 1.10 = 2.09 SQM

12. 3.15 X 2.05 = 6.46 SQM

13. 1.15 X 2.55 = 2.93 SQM

14. 2.92 X 0.30 = 0.88 SQM

15. 4.20 X 0.77 = 3.24 SQM

16. 1.95 X 1.67 = 3.26 SQM

17. 1.05 X 1.47 = 1.54 SQM

18. 1.20 X 0.77 = 0.92 SQM

19. 2.84 X 0.68 = 1.93 SQM

20. 2.92 X 2.24 = 6.54 SQM

21. 0.08 X 1.27 = 0.10 SQM

22. 1.65 X 0.08 = 0.13 SQM

23. 1.31 X 9.38 = 12.32 SQM

24. 2.88 X 5.90 = 16.99 SQM

25. 5.78 X 1.35 = 7.80 SQM

26. 0.25 X 3.00 = 0.75 SQM

27. 6.93 X 0.35 = 2.43 SQM

28. 1.20 X 1.65 = 1.98 SQM

29. 2.41 X 2.00 = 4.82 SQM

30. 5.17 X 0.48 = 2.48 SQM

**STAIRCASE & LIFT AREA CALCULATION**

ST1, 4.89 X 0.94 = 4.60 SQM

ST2, 2.88 X 3.79 = 10.92 SQM

ST3, 1.88 X 5.33 = 10.02 SQM

ST4, 4.46 X 3.40 = 15.43 SQM

ST5, 2.47 X 1.85 = 4.57 SQM

ST6, 0.98 X 2.95 = 2.90 SQM

ST7, 3.19 X 2.10 = 6.70 SQM

ST8, 3.28 X 0.58 = 1.90 SQM

ST9, 4.89 X 1.35 = 6.60 SQM

ST10, 4.19 X 0.30 = 1.26 SQM

ST11, 3.69 X 0.45 = 1.66 SQM

ST12, 1.57 X 3.60 = 5.65 SQM

ST13, 0.95 X 1.12 = 1.07 SQM

ST14, 1.90 X 1.10 = 2.09 SQM

ST15, 1.98 X 0.94 = 1.86 SQM

ST16, 1.88 X 5.94 = 11.18 SQM

ST17, 9.75 X 5.94 = 57.83 SQM

ST18, 9.34 X 3.315 = 31.06 SQM

ST19, 1.20 X 7.805 = 9.37 SQM

ST20, 2.40 X 4.95 = 11.98 SQM

ST21, 6.10 X 0.50 = 3.05 SQM

ST22, 5.33 X 4.625 = 24.65 SQM

ST23, 1.27 X 1.27 = 1.62 SQM

ST24, 1.09 X 1.35 = 1.47 SQM

ST25, 1.57 X 3.60 = 5.65 SQM

**REFUGEE AREA CALCULATION**

R1, 6.51 X 1.03 = 6.71 SQM

R2, 5.025 X 3.56 = 17.89 SQM

R3, 1.15 X 4.36 = 5.01 SQM

R4, 3.125 X 3.10 = 9.69 SQM

R5, 3.125 X 1.91 = 6.00 SQM

R6, 3.39 X 1.20 = 4.07 SQM

R7, 3.31 X 0.21 = 0.70 SQM

R8, 2.49 X 1.44 = 3.59 SQM

R9, 2.95 X 4.21 = 12.43 SQM

R10, 4.31 X 3.35 = 14.44 SQM

R11, 6.01 X 1.35 = 8.12 SQM

R12, 1.57 X 3.60 = 5.65 SQM

R13, 1.57 X 3.60 = 5.65 SQM

R14, 0.45 X 1.12 = 0.50 SQM

R15, 1.90 X 1.10 = 2.09 SQM

R16, 1.98 X 0.94 = 1.86 SQM

R17, 1.88 X 5.94 = 11.18 SQM

R18, 1.88 X 5.94 = 11.18 SQM

R19, 1.88 X 5.94 = 11.18 SQM

R20, 1.88 X 5.94 = 11.18 SQM

R21, 1.88 X 5.94 = 11.18 SQM

R22, 1.88 X 5.94 = 11.18 SQM

R23, 1.88 X 5.94 = 11.18 SQM

R24, 1.88 X 5.94 = 11.18 SQM

R25, 1.88 X 5.94 = 11.18 SQM

R26, 1.88 X 5.94 = 11.18 SQM

R27, 1.88 X 5.94 = 11.18 SQM

R28, 1.88 X 5.94 = 11.18 SQM

R29, 1.88 X 5.94 = 11.18 SQM

R30, 1.88 X 5.94 = 11.18 SQM

R31, 1.88 X 5.94 = 11.18 SQM

R32, 1.88 X 5.94 = 11.18 SQM

R33, 1.88 X 5.94 = 11.18 SQM

R34, 1.88 X 5.94 = 11.18 SQM

R35, 1.88 X 5.94 = 11.18 SQM

R36, 1.88 X 5.94 = 11.18 SQM

R37, 1.88 X 5.94 = 11.18 SQM

R38, 1.88 X 5.94 = 11.18 SQM

R39, 1.88 X 5.94 = 11.18 SQM

R40, 1.88 X 5.94 = 11.18 SQM

R41, 1.88 X 5.94 = 11.18 SQM

R42, 1.88 X 5.94 = 11.18 SQM

R43, 1.88 X 5.94 = 11.18 SQM

R44, 1.88 X 5.94 = 11.18 SQM

R45, 1.88 X 5.94 = 11.18 SQM

R46, 1.88 X 5.94 = 11.18 SQM

R47, 1.88 X 5.94 = 11.18 SQM

R48, 1.88 X 5.94 = 11.18 SQM

R49, 1.88 X 5.94 = 11.18 SQM

R50, 1.88 X 5.94 = 11.18 SQM

**NET BUILT UP AREA - B - II**

623.82 - 65.18 = 558.64 SQM

**TOTAL SALE PSL - C**

558.64 - 0.01 = 558.63 SQM

**CONSTRUCTED AREA - A - I**

609.08 - 206.03 = 403.05 SQM

**BUILT-UP AREA STATEMENT - (WING - D)**

**8TH REFUGEE FLOOR**

AREA OF BLOCK (ABCD) = 34.775 X 17.515 = 609.08 SQM

STANDARD DEDUCTIONS -

1. 9.825 X 0.47 = 4.62 SQM

2. 3.45 X 0.80 = 2.76 SQM

3. 9.95 X 0.62 = 6.17 SQM

4. 6.60 X 1.77 = 11.68 SQM

5. 2.47 X 1.85 = 4.57 SQM

6. 0.98 X 2.95 = 2.90 SQM

7. 3.19 X 2.10 = 6.70 SQM

8. 3.28 X 0.58 = 1.90 SQM

9. 4.89 X 1.35 = 6.60 SQM

10. 4.19 X 0.30 = 1.26 SQM

11. 3.69 X 0.45 = 1.66 SQM

12. 1.57 X 3.60 = 5.65 SQM

13. 0.95 X 1.12 = 1.07 SQM

14. 1.90 X 1.10 = 2.09 SQM

15. 1.98 X 0.94 = 1.86 SQM

16. 1.88 X 5.94 = 11.18 SQM

17. 9.75 X 5.94 = 57.83 SQM

18. 9.34 X 3.315 = 31.06 SQM

19. 1.20 X 7.805 = 9.37 SQM

20. 2.40 X 4.95 = 11.98 SQM

21. 6.10 X 0.50 = 3.05 SQM

22. 5.33 X 4.625 = 24.65 SQM

23. 1.27 X 1.27 = 1.62 SQM

24. 1.09 X 1.35 = 1.47 SQM

25. 1.57 X 3.60 = 5.65 SQM

**STAIRCASE & LIFT AREA CALCULATION**

ST1, 1.95 X 1.03 = 2.01 SQM

ST2, 2.18 X 3.45 = 7.53 SQM

ST3, 1.20 X 4.60 = 5.52 SQM

ST4, 1.50 X 5.75 = 8.63 SQM

ST5, 4.46 X 3.40 = 15.43 SQM

ST6, 0.88 X 1.65 = 1.45 SQM

ST7, 4.92 X 1.50 = 7.38 SQM

ST8, 1.12 X 1.55 = 1.73 SQM

ST9, 0.76 X 1.50 = 1.14 SQM

ST10, 0.98 X 1.65 = 1.62 SQM

ST11, 3.30 X 2.08 = 6.86 SQM

ST12, 4.80 X 2.93 = 14.04 SQM

ST13, 5.95 X 2.35 = 13.88 SQM

ST14, 1.57 X 7.90 = 12.44 SQM

ST15, 6.33 X 5.00 = 31.67 SQM

ST16, 1.95 X 2.92 = 5.69 SQM

ST17, 1.85 X 1.22 = 2.26 SQM

ST18, 6.45 X 1.22 = 7.87 SQM

**REFUGEE AREA CALCULATION**

R1, 3.30 X 2.08 = 6.86 SQM

R2, 4.80 X 2.93 = 14.04 SQM

R3, 5.95 X 2.35 = 13.88 SQM

R4, 1.57 X 7.90 = 12.44 SQM

R5, 6.33 X 5.00 = 31.67 SQM

R6, 1.95 X 2.92 = 5.69 SQM

R7, 1.85 X 1.22 = 2.26 SQM

R8, 6.45 X 1.22 = 7.87 SQM

**NET BUILT UP AREA - B - II**

609.08 - 60.77 = 548.31 SQM

**TOTAL SALE PSL - C**

548.31 - 0.01 = 548.30 SQM

**CONSTRUCTED AREA - A - I**

609.08 - 206.03 = 403.05 SQM

**PROFORMA 'B'**

**DESCRIPTION OF PROPOSAL & PROPERTY**

PROPOSED SLUM REHABILITATION SCHEME ON PLOT OF BEARING G.T.S. NO. 50/60  
(CORRESPONDING WITH P.F.NO. 27/16/1974/1387 & G.T.S. NO. 18/30/1974/1387)  
UNMANNED ZONE OF P.F. AT REFUGEE CAMP, ANANDAPURAM, MADRAS.

FOR: MANDARA SRA CHS LTD.

**NAME OF THE OWNER AND SIGNATURE**

**MONEY MAGNUM NEST PVT. LTD.**

**REVISION**

REVISION	DATE	SCALE	DRN BY	CHK BY
		1:100		

**STAMP AND DATE OF APPROVAL OF PLS**

This cancels Approval to the Previous Plans submitted under No. SP/ENG/2/13/1974/1387

Date: 22/10/2024

Approved Subject to the condition mentioned in this plan. The Plan is valid only for the purpose mentioned in the plan. The Plan is valid only for the purpose mentioned in the plan.

22/10/2024

**NAME & SIGNATURE OF ARCHITECTS**

VISHWAS SATODIA  
ARCHITECT

**NORTH**

**VISHWAS SATODIA**  
ARCHITECT - INTERIOR DESIGNER - VALUER  
1107/18 - 19/18, 17TH FLOOR, SHANTHINIKETAN,  
NEW SOUTH MAHARAJA MANSIONS - 400 027  
TEL: 043-27199515