

10.30 M WIDE ROAD
40.00

SANITARY REQUIRED
 20% FOR 2000
 FOR 20 LEVELS & 1000
 REQUIRED FOR 2000
 PROVIDED FOR 1000
 REQUIRED FOR 1000

CAR PARKING STATEMENT

NO OF PARKING SPACES	AREA IN SQ M	PARKING REQ
200	7500	200
CPH/SPACE	ONE PARKING FOR	9
10% OF 200	PER 100 TO 200 SQ M	18
TOTAL PARKING REQUIRED		218

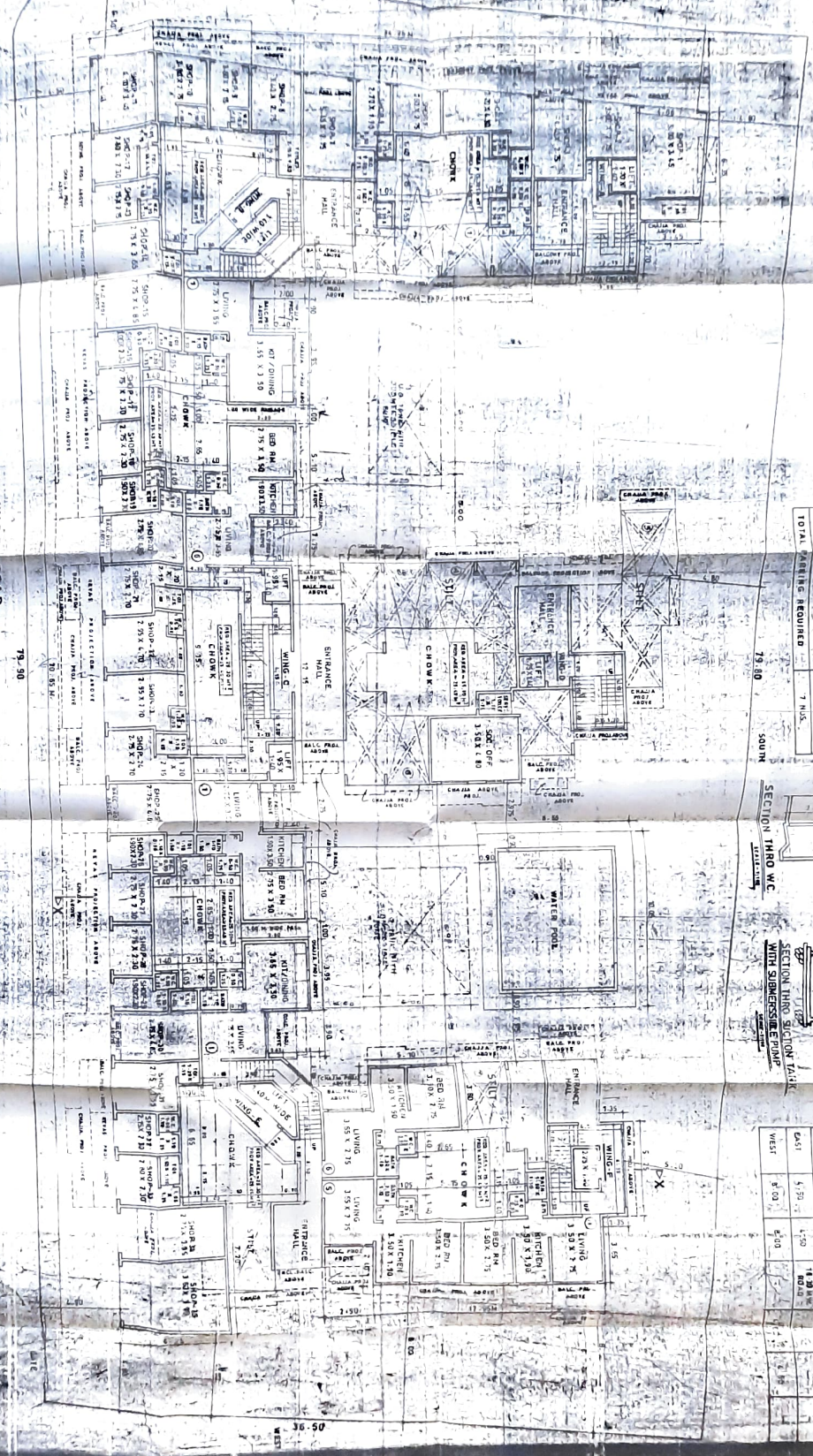
SECTION THRO WC



OPEN SPACE TABLE

BUILDING HEIGHT	MINIMUM OPEN SPACE	MINIMUM OPEN SPACE	MINIMUM OPEN SPACE	MINIMUM OPEN SPACE	MINIMUM OPEN SPACE
15.00 M	15.00 M	15.00 M	15.00 M	15.00 M	15.00 M
30.00 M	15.00 M	15.00 M	15.00 M	15.00 M	15.00 M
45.00 M	15.00 M	15.00 M	15.00 M	15.00 M	15.00 M
60.00 M	15.00 M	15.00 M	15.00 M	15.00 M	15.00 M
75.00 M	15.00 M	15.00 M	15.00 M	15.00 M	15.00 M
90.00 M	15.00 M	15.00 M	15.00 M	15.00 M	15.00 M
105.00 M	15.00 M	15.00 M	15.00 M	15.00 M	15.00 M
120.00 M	15.00 M	15.00 M	15.00 M	15.00 M	15.00 M
135.00 M	15.00 M	15.00 M	15.00 M	15.00 M	15.00 M
150.00 M	15.00 M	15.00 M	15.00 M	15.00 M	15.00 M

18.30 M WIDE ROAD
79.50
NORTH
GROUND FLOOR PLAN



0 R 1

NO	DESCRIPTION	UNIT	NO	DESCRIPTION	UNIT	NO	DESCRIPTION	UNIT
1	AREA	SQ M	1	AREA	SQ M	1	AREA	SQ M
2	PERIMETER	M	2	PERIMETER	M	2	PERIMETER	M
3	VOLUME	CUBIC M	3	VOLUME	CUBIC M	3	VOLUME	CUBIC M
4	WEIGHT	TONNES	4	WEIGHT	TONNES	4	WEIGHT	TONNES
5	NUMBER OF FLOORS	NO	5	NUMBER OF FLOORS	NO	5	NUMBER OF FLOORS	NO
6	NUMBER OF ROOMS	NO	6	NUMBER OF ROOMS	NO	6	NUMBER OF ROOMS	NO
7	NUMBER OF STAIRS	NO	7	NUMBER OF STAIRS	NO	7	NUMBER OF STAIRS	NO
8	NUMBER OF LIFTS	NO	8	NUMBER OF LIFTS	NO	8	NUMBER OF LIFTS	NO
9	NUMBER OF PARKING SPACES	NO	9	NUMBER OF PARKING SPACES	NO	9	NUMBER OF PARKING SPACES	NO
10	NUMBER OF TRUCKS	NO	10	NUMBER OF TRUCKS	NO	10	NUMBER OF TRUCKS	NO
11	NUMBER OF BUSES	NO	11	NUMBER OF BUSES	NO	11	NUMBER OF BUSES	NO
12	NUMBER OF TAXIS	NO	12	NUMBER OF TAXIS	NO	12	NUMBER OF TAXIS	NO
13	NUMBER OF PASSENGER CARS	NO	13	NUMBER OF PASSENGER CARS	NO	13	NUMBER OF PASSENGER CARS	NO
14	NUMBER OF MOTORBIKES	NO	14	NUMBER OF MOTORBIKES	NO	14	NUMBER OF MOTORBIKES	NO
15	NUMBER OF CYCLES	NO	15	NUMBER OF CYCLES	NO	15	NUMBER OF CYCLES	NO
16	NUMBER OF RICKSHAWES	NO	16	NUMBER OF RICKSHAWES	NO	16	NUMBER OF RICKSHAWES	NO
17	NUMBER OF TRUCKS	NO	17	NUMBER OF TRUCKS	NO	17	NUMBER OF TRUCKS	NO
18	NUMBER OF BUSES	NO	18	NUMBER OF BUSES	NO	18	NUMBER OF BUSES	NO
19	NUMBER OF TAXIS	NO	19	NUMBER OF TAXIS	NO	19	NUMBER OF TAXIS	NO
20	NUMBER OF PASSENGER CARS	NO	20	NUMBER OF PASSENGER CARS	NO	20	NUMBER OF PASSENGER CARS	NO
21	NUMBER OF MOTORBIKES	NO	21	NUMBER OF MOTORBIKES	NO	21	NUMBER OF MOTORBIKES	NO
22	NUMBER OF CYCLES	NO	22	NUMBER OF CYCLES	NO	22	NUMBER OF CYCLES	NO
23	NUMBER OF RICKSHAWES	NO	23	NUMBER OF RICKSHAWES	NO	23	NUMBER OF RICKSHAWES	NO
24	NUMBER OF TRUCKS	NO	24	NUMBER OF TRUCKS	NO	24	NUMBER OF TRUCKS	NO
25	NUMBER OF BUSES	NO	25	NUMBER OF BUSES	NO	25	NUMBER OF BUSES	NO
26	NUMBER OF TAXIS	NO	26	NUMBER OF TAXIS	NO	26	NUMBER OF TAXIS	NO
27	NUMBER OF PASSENGER CARS	NO	27	NUMBER OF PASSENGER CARS	NO	27	NUMBER OF PASSENGER CARS	NO
28	NUMBER OF MOTORBIKES	NO	28	NUMBER OF MOTORBIKES	NO	28	NUMBER OF MOTORBIKES	NO
29	NUMBER OF CYCLES	NO	29	NUMBER OF CYCLES	NO	29	NUMBER OF CYCLES	NO
30	NUMBER OF RICKSHAWES	NO	30	NUMBER OF RICKSHAWES	NO	30	NUMBER OF RICKSHAWES	NO