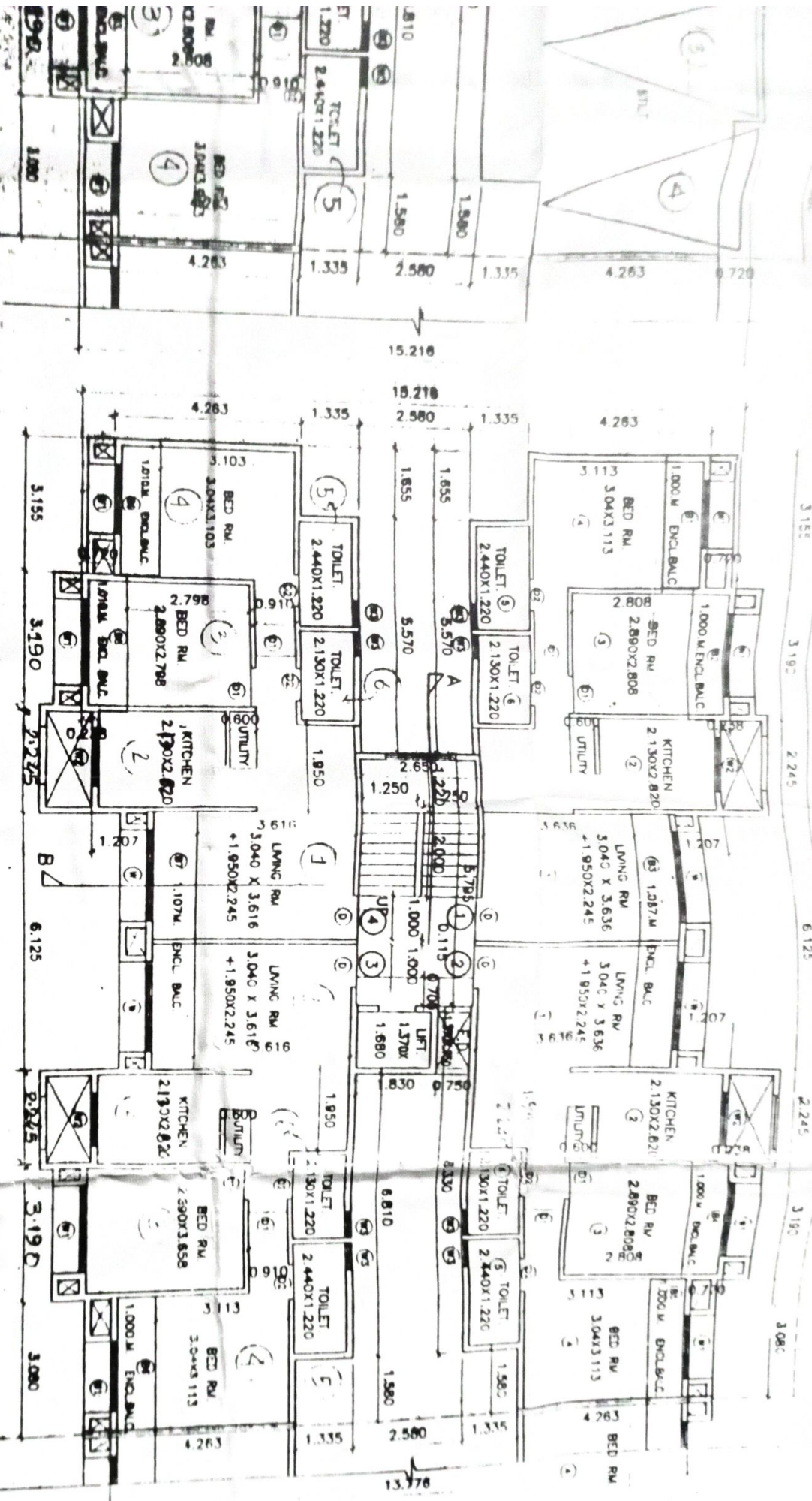


TYPICAL FLOOR PLAN. (1ST TO 7TH)  
 BUILDING TYPE-D

SCALE = 1/100



STAIR	S 1)	1
	S 2)	2
	S 3)	3
	S 4)	4
TOTAL ST		10
BALC	B 1)	1
	B 2)	2
	B 3)	3
	B 4)	4
	B 5)	5
	B 6)	6
	B 7)	7
	B 8)	8
	B 9)	9
TOTAL PR		35
NET BUILT		35
BLOCK		35
TOTAL ARI		35
PERMISSE		
PROPOS		
BALANCE		