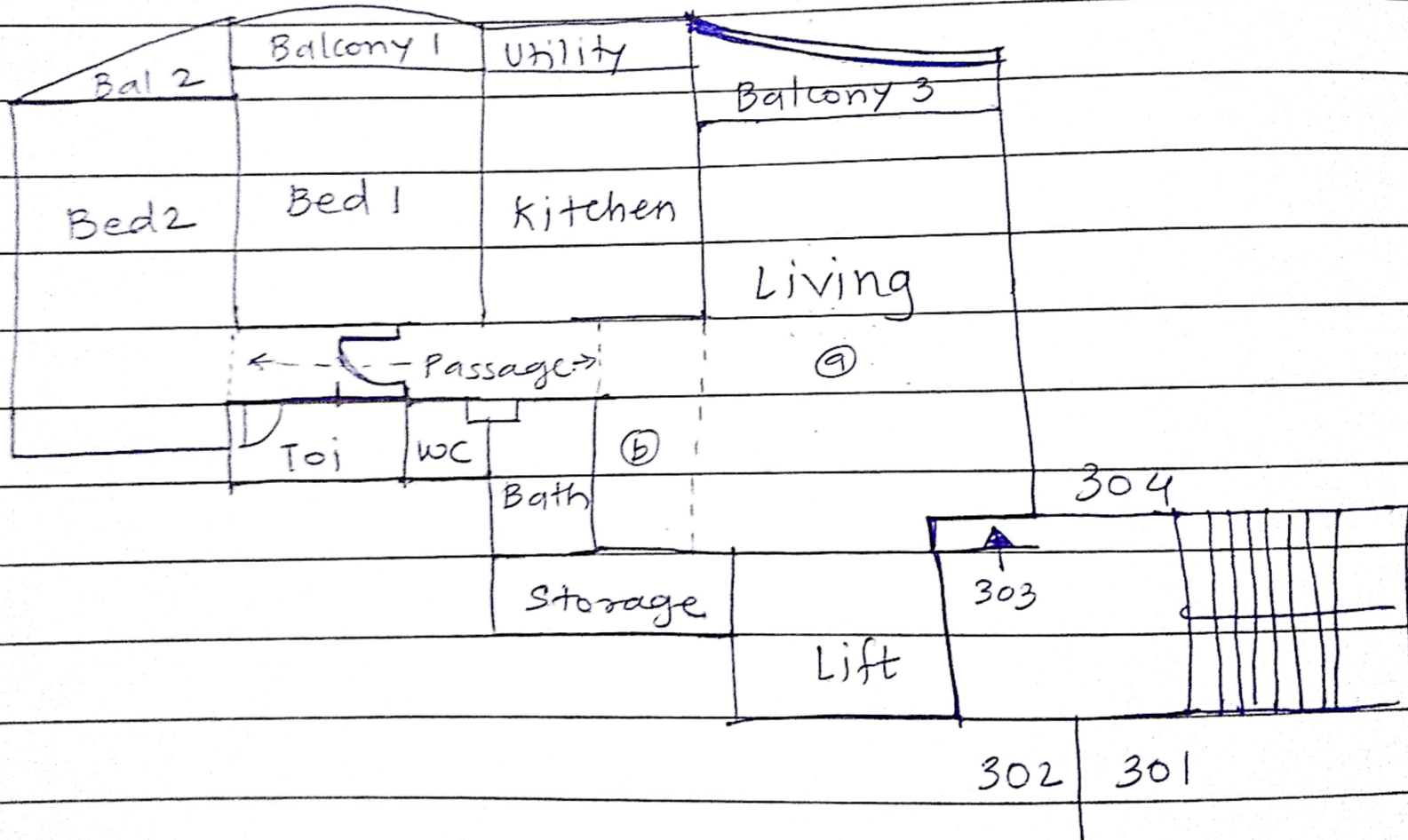


Solitaire 3 , Building no.12 - 303. , Mira Road (E)



(E) Living ①  $9.9' \times 15.3' = 151.21 \text{ sqft}$

②  $11.33' \times 3.18' = 36.02$

Passage -  $15.1' \times 3.33 = 50.28$

Bath -  $6.67' \times 3.92' = 23.79 \text{ sqft}$

Storage -  $4.01' \times 8.57' = 34.37 \text{ sqft}$

Kitchen -  $7.96' \times 9.06' = 72.11 \text{ sqft}$

Utility -  $2.52' \times 8.51' = 21.44 \text{ sqft}$

WC -  $3.08' \times 3.44' = 10.59 \text{ sqft}$

Bed 1 -  $10.15' \times 9.22 = 93.58 \text{ sqft}$

Bed 2 -  $9.66' \times 12.32' = 119.01 \text{ sqft}$

Toilet -  $3.93' \times 6.24' = 24.52 \text{ sqft}$

Balcony 2 -  $19.446 \text{ sqft}$   
(Triangle area)

~~Flowerbed~~

Balcony 1 -  $8.4 \times 2.09 = 17.55 \text{ sqft}$

Balcony 3 -  $9.84 \times 2.5 = 24.6 \text{ sqft}$

Total Area -  $60.97 \text{ sq.m.}$

$656.366 \text{ sq.ft.}$

24-1-24.

Solitaire 3, 303 - Building No. 12.

Poonam Gardens, Mira Road (E)

Location - 19.286453, 72.871431

N - Poonam Garden Road & Arena Chs.

S - Slum area

W - Unique Heights.

E - Solitaire-2 ~~B~~ society

Flat boundaries.

N - Lobby

S - Building open space - Garden.

W - Flat 304

E - Building no. 13.

- 4 Flats per floor. | 13 Shops on Ground floor.

- 1 Lift

- G+7, Stilt parking

- Total 5 buildings in Solitaire 3.

Building no. 12 to 16.

Rate - 1bhk - 65 lakhs

2bhk - 95 lakhs