

BUILT UP AREA CALCULATION (SALE WING "F")

GROUND FLOOR	TOTAL	=	27132 SQ.MT X
REDUCTIONS			
1	0.32 X 0.28 X 1 NO	=	0.09 SQ.MT
2	7.06 X 6.53 X 1 NO	=	46.09 SQ.MT
3	4.84 X 6.53 X 1 NO	=	31.60 SQ.MT
TOTAL		=	87.78 SQ.MT
NET SALE BUILT UP AREA (X-VI)		=	18354 SQ.MT

STAIRCASE AREA CALCULATION

S11	2.20 X 3.45 X 1 NO	=	7.59 SQ.MT
S12	0.45 X 1.20 X 1 NO	=	0.54 SQ.MT
S13	1.16 X 3.45 X 1 NO	=	3.99 SQ.MT
S14	7.06 X 0.95 X 1 NO	=	6.71 SQ.MT
S15	1.50 X 0.95 X 1 NO	=	1.43 SQ.MT
TOTAL		=	20.36 SQ.MT

ENTRANCE LOBBY AREA CALCULATION

L1	1.25 X 1.72 X 1 NO	=	2.15 SQ.MT
L2	3.20 X 1.91 X 1 NO	=	6.12 SQ.MT
TOTAL		=	8.27 SQ.MT

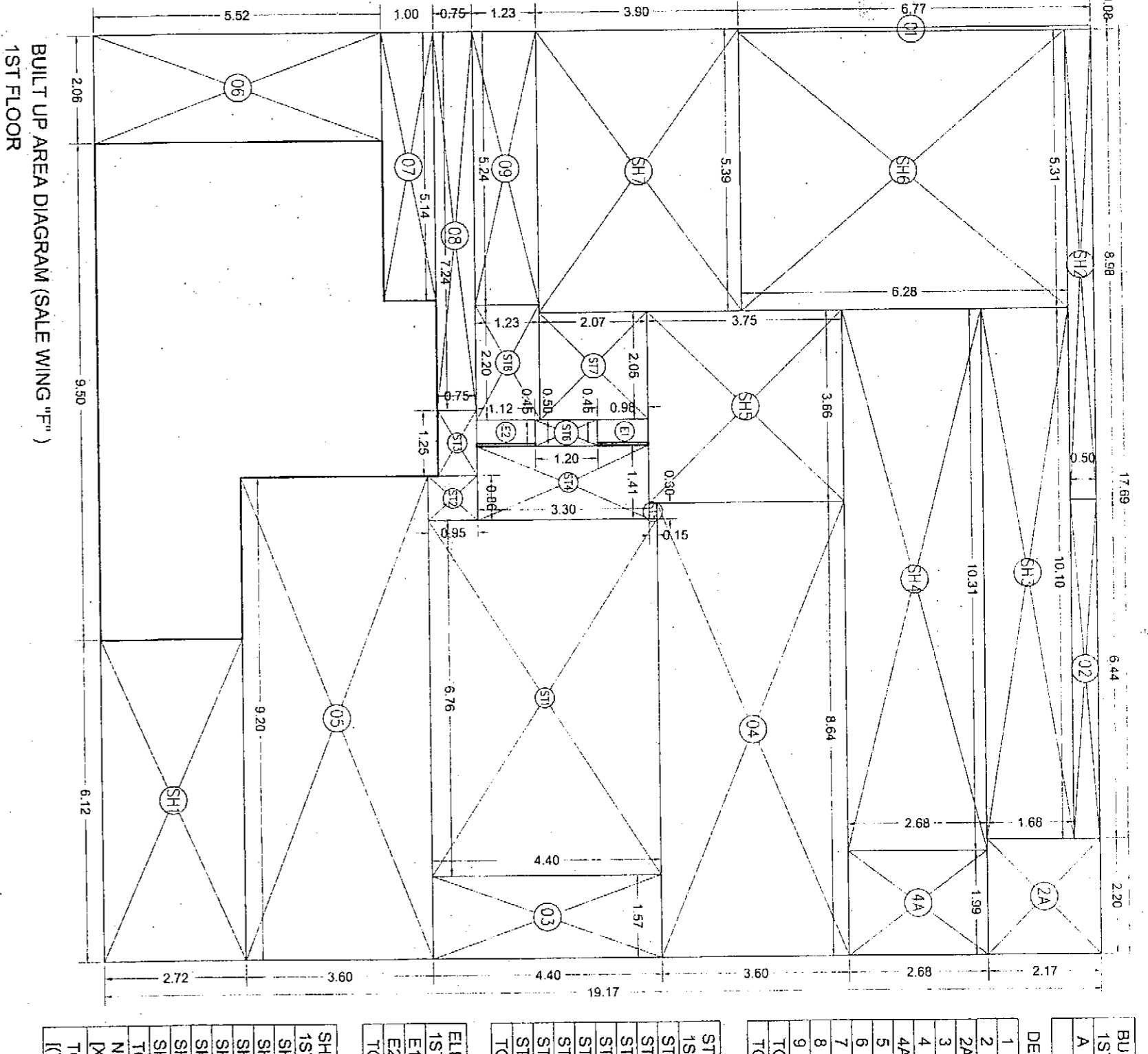
METER ROOM AREA CALCULATION

M1	6.54 X 6.52 X 1 NO	=	42.57 SQ.MT
M2	5.92 X 0.75 X 1 NO	=	0.44 SQ.MT
M3	7.54 X 0.75 X 1 NO	=	0.57 SQ.MT
TOTAL		=	43.58 SQ.MT

ELE SHAFT & F.H.C AREA CALCULATION

ED1	1.12 X 0.45 X 1 NO	=	0.50 SQ.MT
ED2	1.12 X 0.45 X 1 NO	=	0.50 SQ.MT
ED3	1.12 X 0.45 X 1 NO	=	0.50 SQ.MT
ED4	1.12 X 0.45 X 1 NO	=	0.50 SQ.MT
ED5	1.12 X 0.45 X 1 NO	=	0.50 SQ.MT
TOTAL		=	2.50 SQ.MT

NET SALE BUILT UP AREA (X-VII)  
18354 SQ.MT



BUILT UP AREA CALCULATION (SALE WING "F")

1ST FLOOR	TOTAL	=	33127 SQ.MT X
REDUCTIONS			
1	0.28 X 6.77 X 1 NO	=	1.88 SQ.MT
2	6.44 X 9.92 X 1 NO	=	64.17 SQ.MT
3	1.57 X 4.40 X 1 NO	=	6.91 SQ.MT
4	8.64 X 3.80 X 1 NO	=	32.83 SQ.MT
5	9.26 X 6.80 X 1 NO	=	62.97 SQ.MT
6	2.06 X 5.52 X 1 NO	=	11.37 SQ.MT
7	5.14 X 1.00 X 1 NO	=	5.14 SQ.MT
8	6.24 X 1.23 X 1 NO	=	7.68 SQ.MT
TOTAL		=	225.96 SQ.MT
NET SALE BUILT UP AREA (X-VIII)		=	16092 SQ.MT

STAIRCASE AREA CALCULATION (SALE WING "F")

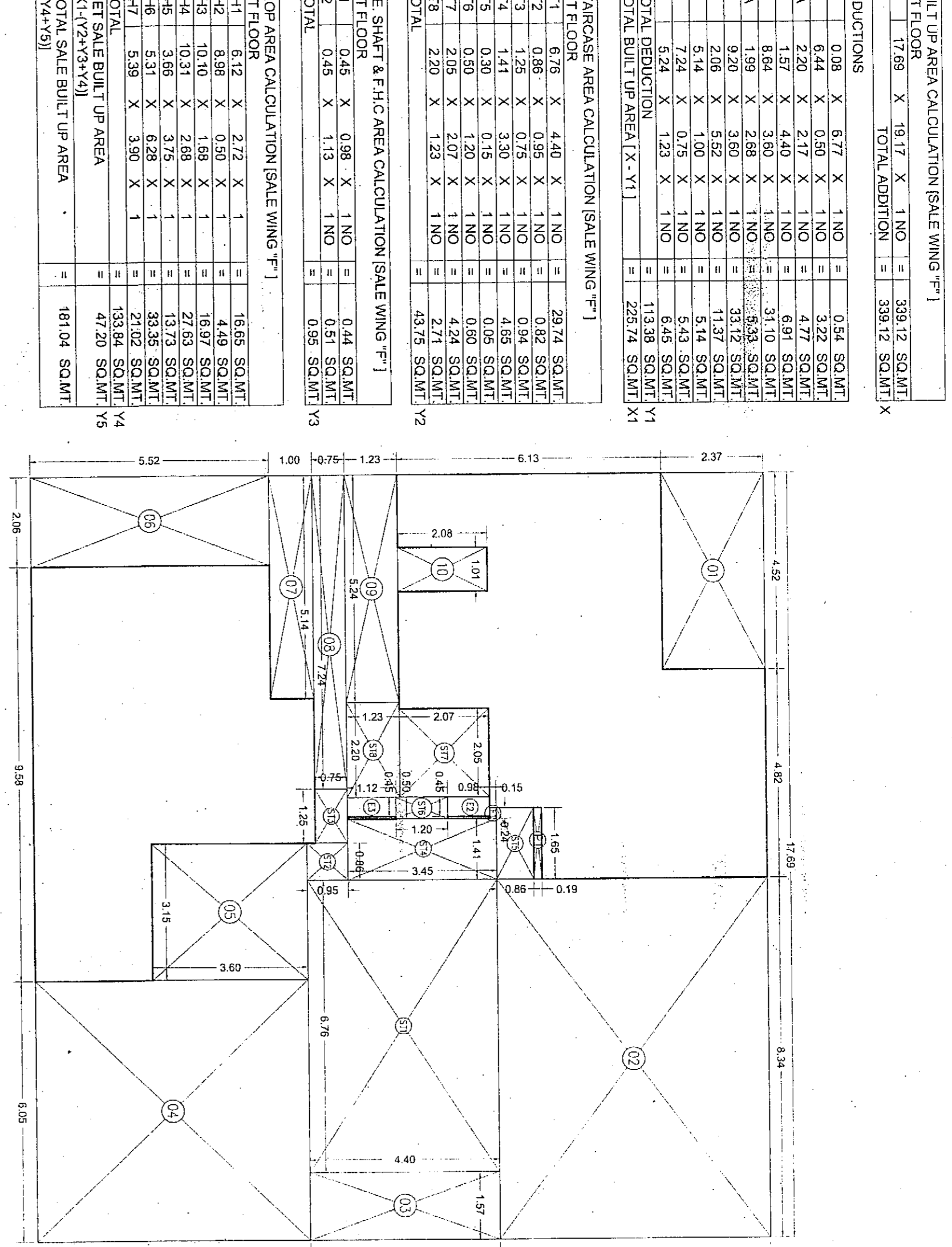
S11	6.78 X 4.40 X 1 NO	=	29.83 SQ.MT
S12	1.25 X 0.75 X 1 NO	=	0.94 SQ.MT
S13	1.41 X 3.50 X 1 NO	=	4.94 SQ.MT
S14	0.50 X 0.75 X 1 NO	=	0.38 SQ.MT
S15	0.50 X 0.75 X 1 NO	=	0.38 SQ.MT
S16	0.50 X 0.75 X 1 NO	=	0.38 SQ.MT
S17	2.05 X 2.07 X 1 NO	=	4.24 SQ.MT
S18	2.20 X 1.23 X 1 NO	=	2.71 SQ.MT
TOTAL		=	43.53 SQ.MT

ELE SHAFT & F.H.C AREA CALCULATION (SALE WING "F")

ED1	0.45 X 0.88 X 1 NO	=	0.40 SQ.MT
ED2	0.45 X 0.88 X 1 NO	=	0.40 SQ.MT
ED3	0.45 X 0.88 X 1 NO	=	0.40 SQ.MT
TOTAL		=	1.20 SQ.MT

SHOP AREA CALCULATION (SALE WING "F")

SH1	6.12 X 2.12 X 1	=	12.97 SQ.MT
SH2	8.98 X 0.50 X 1	=	4.49 SQ.MT
SH3	10.70 X 2.88 X 1	=	30.82 SQ.MT
SH4	3.65 X 3.75 X 1	=	13.69 SQ.MT
SH5	5.31 X 6.28 X 1	=	33.35 SQ.MT
SH6	5.30 X 3.90 X 1	=	20.67 SQ.MT
SH7	2.05 X 2.07 X 1	=	4.24 SQ.MT
SH8	2.20 X 1.23 X 1	=	2.71 SQ.MT
TOTAL		=	149.84 SQ.MT



BUILT UP AREA CALCULATION (SALE WING "F")

2ND FLOOR	TOTAL	=	10428 SQ.MT X
REDUCTIONS			
1	4.52 X 2.37 X 1 NO	=	10.71 SQ.MT
2	8.34 X 6.28 X 1 NO	=	52.38 SQ.MT
3	1.57 X 4.40 X 1 NO	=	6.91 SQ.MT
4	5.15 X 5.80 X 1 NO	=	29.87 SQ.MT
5	2.06 X 5.52 X 1 NO	=	11.37 SQ.MT
6	5.14 X 1.00 X 1 NO	=	5.14 SQ.MT
7	6.24 X 1.23 X 1 NO	=	7.68 SQ.MT
8	5.24 X 1.23 X 1 NO	=	6.45 SQ.MT
9	1.01 X 2.08 X 1 NO	=	2.10 SQ.MT
TOTAL		=	126.06 SQ.MT
NET SALE BUILT UP AREA (X-IX)		=	10428 SQ.MT

STAIRCASE AREA CALCULATION (SALE WING "F")

S11	4.40 X 1.40 X 1 NO	=	6.16 SQ.MT
S12	0.50 X 0.88 X 1 NO	=	0.44 SQ.MT
S13	1.25 X 0.75 X 1 NO	=	0.94 SQ.MT
S14	1.41 X 3.50 X 1 NO	=	4.94 SQ.MT
S15	0.50 X 0.75 X 1 NO	=	0.38 SQ.MT
S16	0.50 X 0.75 X 1 NO	=	0.38 SQ.MT
S17	2.05 X 2.07 X 1 NO	=	4.24 SQ.MT
S18	2.20 X 1.23 X 1 NO	=	2.71 SQ.MT
TOTAL		=	22.14 SQ.MT

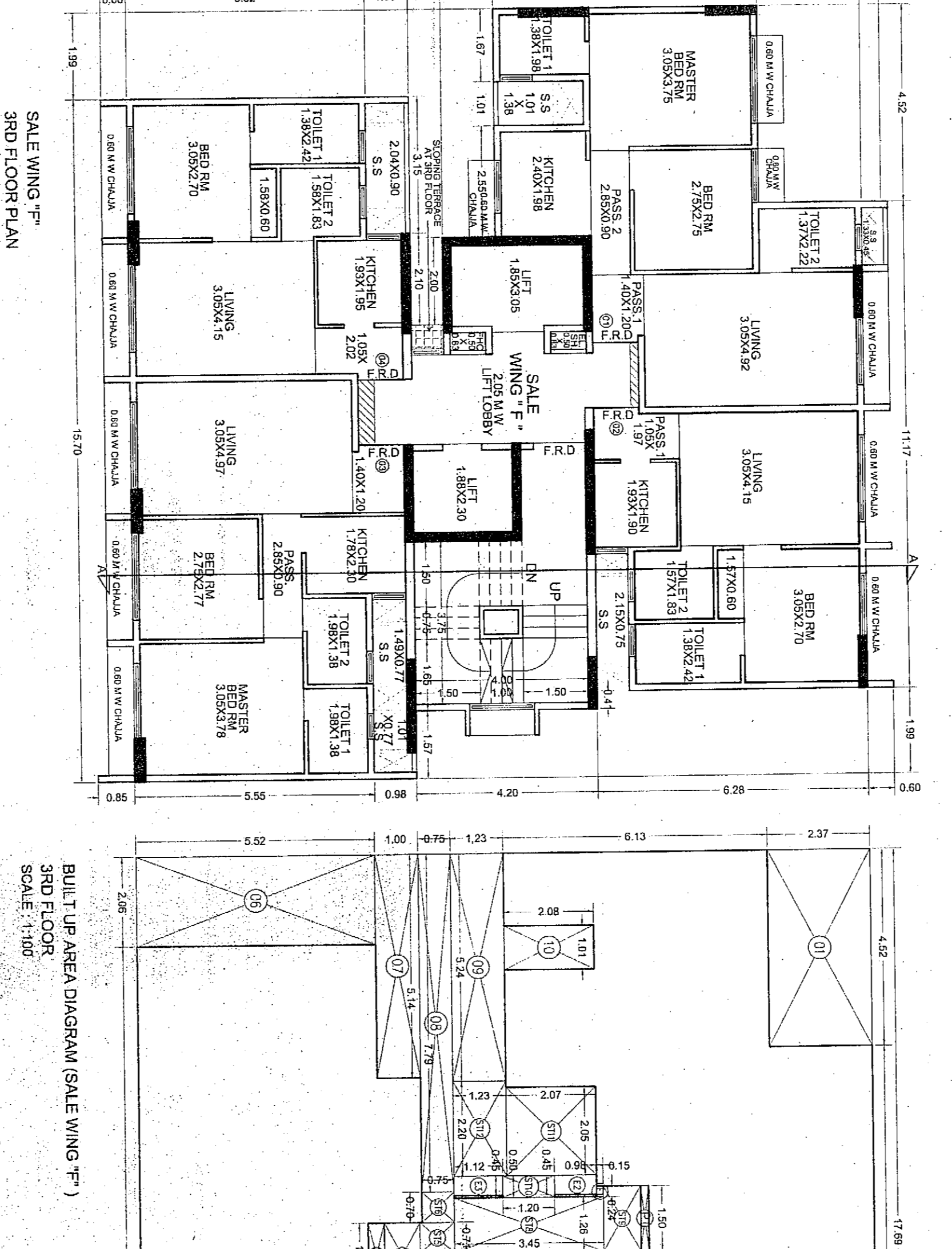
ELE SHAFT & F.H.C AREA CALCULATION (SALE WING "F")

ED1	0.45 X 0.75 X 1 NO	=	0.34 SQ.MT
ED2	0.45 X 0.88 X 1 NO	=	0.40 SQ.MT
ED3	0.45 X 1.13 X 1 NO	=	0.51 SQ.MT
TOTAL		=	1.25 SQ.MT

PASSAGE AREA CALCULATION (SALE WING "F")

P1	0.15 X 0.15 X 1 NO	=	0.02 SQ.MT
P2	0.15 X 0.15 X 1 NO	=	0.02 SQ.MT
P3	0.15 X 0.15 X 1 NO	=	0.02 SQ.MT
P4	0.15 X 0.15 X 1 NO	=	0.02 SQ.MT
P5	0.15 X 0.15 X 1 NO	=	0.02 SQ.MT
P6	0.15 X 0.15 X 1 NO	=	0.02 SQ.MT
P7	0.15 X 0.15 X 1 NO	=	0.02 SQ.MT
P8	0.15 X 0.15 X 1 NO	=	0.02 SQ.MT
P9	0.15 X 0.15 X 1 NO	=	0.02 SQ.MT
P10	0.15 X 0.15 X 1 NO	=	0.02 SQ.MT
P11	0.15 X 0.15 X 1 NO	=	0.02 SQ.MT
P12	0.15 X 0.15 X 1 NO	=	0.02 SQ.MT
P13	0.15 X 0.15 X 1 NO	=	0.02 SQ.MT
P14	0.15 X 0.15 X 1 NO	=	0.02 SQ.MT
P15	0.15 X 0.15 X 1 NO	=	0.02 SQ.MT
P16	0.15 X 0.15 X 1 NO	=	0.02 SQ.MT
P17	0.15 X 0.15 X 1 NO	=	0.02 SQ.MT
P18	0.15 X 0.15 X 1 NO	=	0.02 SQ.MT
P19	0.15 X 0.15 X 1 NO	=	0.02 SQ.MT
P20	0.15 X 0.15 X 1 NO	=	0.02 SQ.MT
P21	0.15 X 0.15 X 1 NO	=	0.02 SQ.MT
P22	0.15 X 0.15 X 1 NO	=	0.02 SQ.MT
P23	0.15 X 0.15 X 1 NO	=	0.02 SQ.MT
P24	0.15 X 0.15 X 1 NO	=	0.02 SQ.MT
P25	0.15 X 0.15 X 1 NO	=	0.02 SQ.MT
P26	0.15 X 0.15 X 1 NO	=	0.02 SQ.MT
P27	0.15 X 0.15 X 1 NO	=	0.02 SQ.MT
P28	0.15 X 0.15 X 1 NO	=	0.02 SQ.MT
P29	0.15 X 0.15 X 1 NO	=	0.02 SQ.MT
P30	0.15 X 0.15 X 1 NO	=	0.02 SQ.MT
P31	0.15 X 0.15 X 1 NO	=	0.02 SQ.MT
P32	0.15 X 0.15 X 1 NO	=	0.02 SQ.MT
P33	0.15 X 0.15 X 1 NO	=	0.02 SQ.MT
P34	0.15 X 0.15 X 1 NO	=	0.02 SQ.MT
P35	0.15 X 0.15 X 1 NO	=	0.02 SQ.MT
P36	0.15 X 0.15 X 1 NO	=	0.02 SQ.MT
P37	0.15 X 0.15 X 1 NO	=	0.02 SQ.MT
P38	0.15 X 0.15 X 1 NO	=	0.02 SQ.MT
P39	0.15 X 0.15 X 1 NO	=	0.02 SQ.MT
P40	0.15 X 0.15 X 1 NO	=	0.02 SQ.MT
P41	0.15 X 0.15 X 1 NO	=	0.02 SQ.MT
P42	0.15 X 0.15 X 1 NO	=	0.02 SQ.MT
P43	0.15 X 0.15 X 1 NO	=	0.02 SQ.MT
P44	0.15 X 0.15 X 1 NO	=	0.02 SQ.MT
P45	0.15 X 0.15 X 1 NO	=	0.02 SQ.MT
P46	0.15 X 0.15 X 1 NO	=	0.02 SQ.MT
P47	0.15 X 0.15 X 1 NO	=	0.02 SQ.MT
P48	0.15 X 0.15 X 1 NO	=	0.02 SQ.MT
P49	0.15 X 0.15 X 1 NO	=	0.02 SQ.MT
P50	0.15 X 0.15 X 1 NO	=	0.02 SQ.MT
TOTAL		=	0.30 SQ.MT

NET SALE BUILT UP AREA (X-X)  
10428 SQ.MT



BUILT UP AREA CALCULATION (SALE WING "F")

3RD FLOOR	TOTAL	=	30173 SQ.MT X
REDUCTIONS			
1	4.52 X 2.37 X 1 NO	=	10.71 SQ.MT
2	8.34 X 6.28 X 1 NO	=	52.38 SQ.MT
3	1.57 X 4.40 X 1 NO	=	6.91 SQ.MT
4	5.15 X 5.80 X 1 NO	=	29.87 SQ.MT
5	2.06 X 5.52 X 1 NO	=	11.37 SQ.MT
6	5.14 X 1.00 X 1 NO	=	5.14 SQ.MT
7	6.24 X 1.23 X 1 NO	=	7.68 SQ.MT
8	5.24 X 1.23 X 1 NO	=	6.45 SQ.MT
9	1.01 X 2.08 X 1 NO	=	2.10 SQ.MT
TOTAL		=	126.06 SQ.MT
NET SALE BUILT UP AREA (X-XI)		=	18920 SQ.MT

STAIRCASE AREA CALCULATION (SALE WING "F")

S11	4.40 X 1.40 X 1 NO	=	6.16 SQ.MT
S12	0.50 X 0.88 X 1 NO	=	0.44 SQ.MT
S13	1.25 X 0.75 X 1 NO	=	0.94 SQ.MT
S14	1.41 X 3.50 X 1 NO	=	4.94 SQ.MT
S15	0.50 X 0.75 X 1 NO	=	0.38 SQ.MT
S16	0.50 X 0.75 X 1 NO	=	0.38 SQ.MT
S17	2.05 X 2.07 X 1 NO	=	4.24 SQ.MT
S18	2.20 X 1.23 X 1 NO	=	2.71 SQ.MT
TOTAL		=	22.14 SQ.MT

ELE SHAFT & F.H.C AREA CALCULATION (SALE WING "F")

ED1	0.45 X 0.75 X 1 NO	=	0.34 SQ.MT
ED2	0.45 X 0.88 X 1 NO	=	0.40 SQ.MT
ED3	0.45 X 1.13 X 1 NO	=	0.51 SQ.MT
TOTAL		=	1.25 SQ.MT

PASSAGE AREA CALCULATION (SALE WING "F")

P1	0.15 X 0.15 X 1 NO	=	0.02 SQ.MT
P2	0.15 X 0.15 X 1 NO	=	0.02 SQ.MT
P3	0.15 X 0.15 X 1 NO	=	0.02 SQ.MT
P4	0.15 X 0.15 X 1 NO	=	0.02 SQ.MT
P5	0.15 X 0.15 X 1 NO	=	0.02 SQ.MT
P6	0.15 X 0.15 X 1 NO	=	0.02 SQ.MT
P7	0.15 X 0.15 X 1 NO	=	0.02 SQ.MT
P8	0.15 X 0.15 X 1 NO	=	0.02 SQ.MT
P9	0.15 X 0.15 X 1 NO	=	0.02 SQ.MT
P10	0.15 X 0.15 X 1 NO	=	0.02 SQ.MT
P11	0.15 X 0.15 X 1 NO	=	0.02 SQ.MT
P12	0.15 X 0.15 X 1 NO	=	0.02 SQ.MT
P13	0.15 X 0.15 X 1 NO	=	0.02 SQ.MT
P14	0.15 X 0.15 X 1 NO	=	0.02 SQ.MT
P15	0.15 X 0.15 X 1 NO	=	0.02 SQ.MT
P16	0.15 X 0.15 X 1 NO	=	0.02 SQ.MT
P17	0.15 X 0.15 X 1 NO	=	0.02 SQ.MT
P18	0.15 X 0.15 X 1 NO	=	0.02 SQ.MT
P19	0.15 X 0.15 X 1 NO	=	0.02 SQ.MT
P20	0.15 X 0.15 X 1 NO	=	0.02 SQ.MT
P21	0.15 X 0.15 X 1 NO	=	0.02 SQ.MT
P22	0.15 X 0.15 X 1 NO	=	0.02 SQ.MT
P23	0.15 X 0.15 X 1 NO	=	0.02 SQ.MT
P24	0.15 X 0.15 X 1 NO	=	0.02 SQ.MT
P25	0.15 X 0.15 X 1 NO	=	0.02 SQ.MT
P26	0.1		