

MUNICIPAL CORPORATION OF GREATER MUMBAI

NO.CHE/9348/BP(WS)/AP of

13 MAY 2014

FULL OCCUPATION CERTIFICATE

To,
Shri Gopalkrishna P. Shetty,
C.A. to Owner, Shri Jayantikumar I. Patel &
Kamleshkumar J. Patel.

Sub : Permission to occupy the completed commercial building on plot bearing C.T.S. No.602/A, 602/B, 602/C of Village Valnai at Ramchandra Lane Extn. Malad (West), Mumbai.

Ref :- Your Architect's letter dtd. 06.10.2012.

Gentleman,

The development work of Commercial Bldg. comprising of Basement + Ground + 1st + 2nd + 3rd (pt) + 4th + 5th (pt) upper floors on plot bearing C.T.S. No. 602/A, 602/B & 602/C of Village Valnai at Ramchandra Lane Extn. Malad (West), Mumbai completed under the supervision of Shri Harish Gandhi, Architect having Lic. No.CA/84/8223 Shri S.S. Thatte Lic. Structural Engineer having Lic. No.STR/T/6 and Lic., Shri Umang H. Gandhi Site Supervisor having Lic. No.G/216/SS-III, may be occupied on the following conditions:-

- 1) That the certificates under Section 270-A of M.M.C. Act shall be obtained from A.E.W.W. 'P/North' Ward and a certified copy of the same shall be submitted to this office.
- 2) That the Co.Op. Hsg. Society shall be formed and registered within three months from the date of issue hereof, or before B.C.C. whichever is earlier.

PROFORMA - B

CONTENTS OF SHEET

BASEMENT FLOOR PLAN, GROUND FLOOR PLAN, SECTION 'X' 'X', SECTION 'Y' 'Y'

DESCRIPTION OF PROPERTY

PROPOSED COMMERCIAL BUILDING ON PLOT BEARING
C.T.S.NO. 602 & 602 (1014) OF VILLAGE - VALNAI
@ RAMCHNDRA LANE MALAD (W), MUMBAI

NAME OF OWNER

Shetty
SHRI. GOPALKRISHNA P. SHETTY
BELLOR HOMES AND REALTORS PVT.LTD.
REGD. OFFICE : 1 & 2 SATYA DEEP CHS LTD.
CHIKUWADI, BORIVALI (W), MUMBAI -92

STAMP OF DATE OF RECEIPT OF PLAN <div style="text-align: center; font-size: 1.2em;">30 MAR 2010</div>	STAMP OF DATE OF APPROVAL OF PLAN <div style="text-align: center;"> 9348 / BP (W) / AP APPROVED SUBJECT TO THE CONDITIONS MENTIONED IN THE COMPANY OFFICE LETTER NO <i>Shetty</i> 30/3/10 EXECUTIVE ENGINEER BLDG. PROPOSAL (W.C.P. & K.W.) MUMBAI MAHANAGAR PALIKA 30/3/10 S.L.J. (S.L.J.) (P.L.) </div>
--	--

JOB NO.	DRG. NO.	SCALE	DRAWN BY	CHECKED BY	DATE
	1	AS NOTED	GANESH		

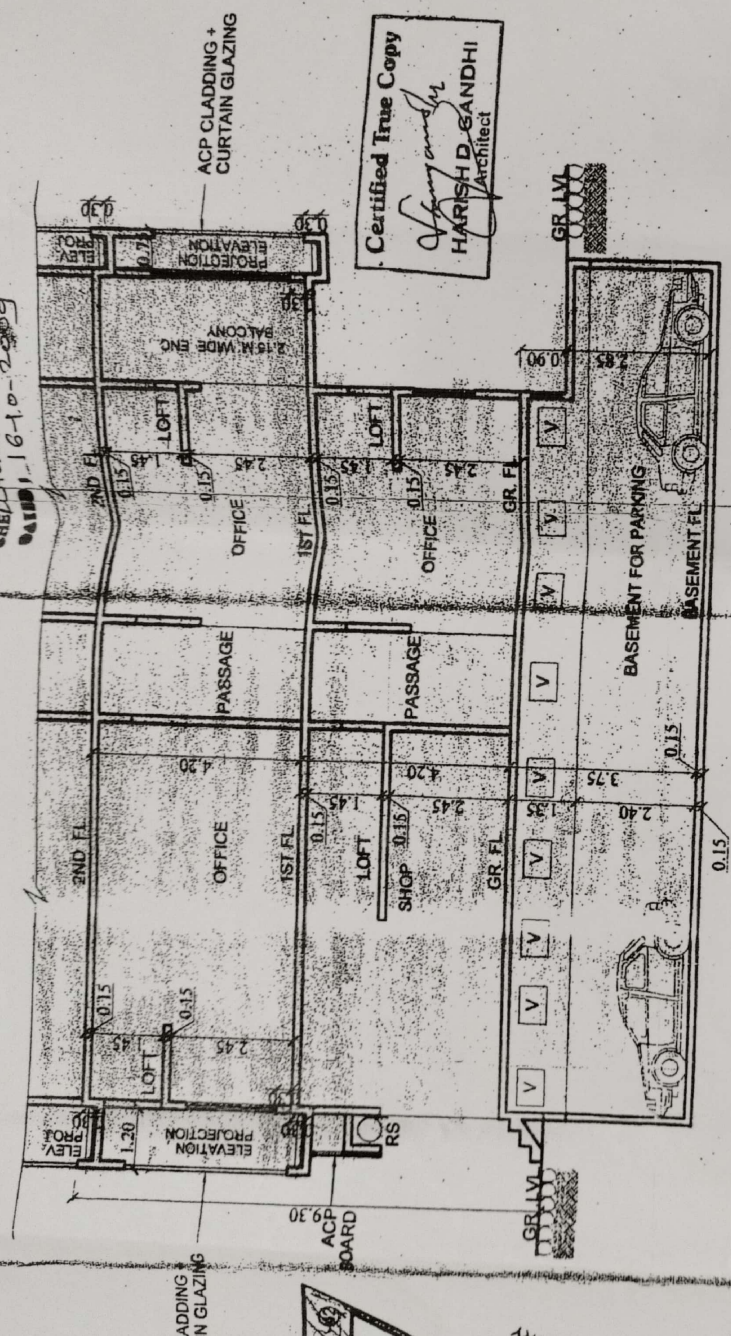
NORTH LINE

NAME, ADDRESS & SIGNATURE OF ARCHITECT

Harish D. Gandhi
HARISH D. GANDHI
(B. ARCH.), A.I.A
ARCHITECT - PLANNER
3, GOMTI SMRUTI, JAMBLI GULLY,
BORIVALI (W), MUMBAI-400 092
PH.No.: 28984418 ; FAX No.: 28993527.
E MAIL - architect_harish_gandhi@yahoo.com

कार्यकारी अभियंता
 प्रस्ताव "बी" विभाग
 कार्यालय, महाराष्ट्र
 प्रस्ताव (प. उपनगर) 2
 ब. मुंबई महानगरपालिका

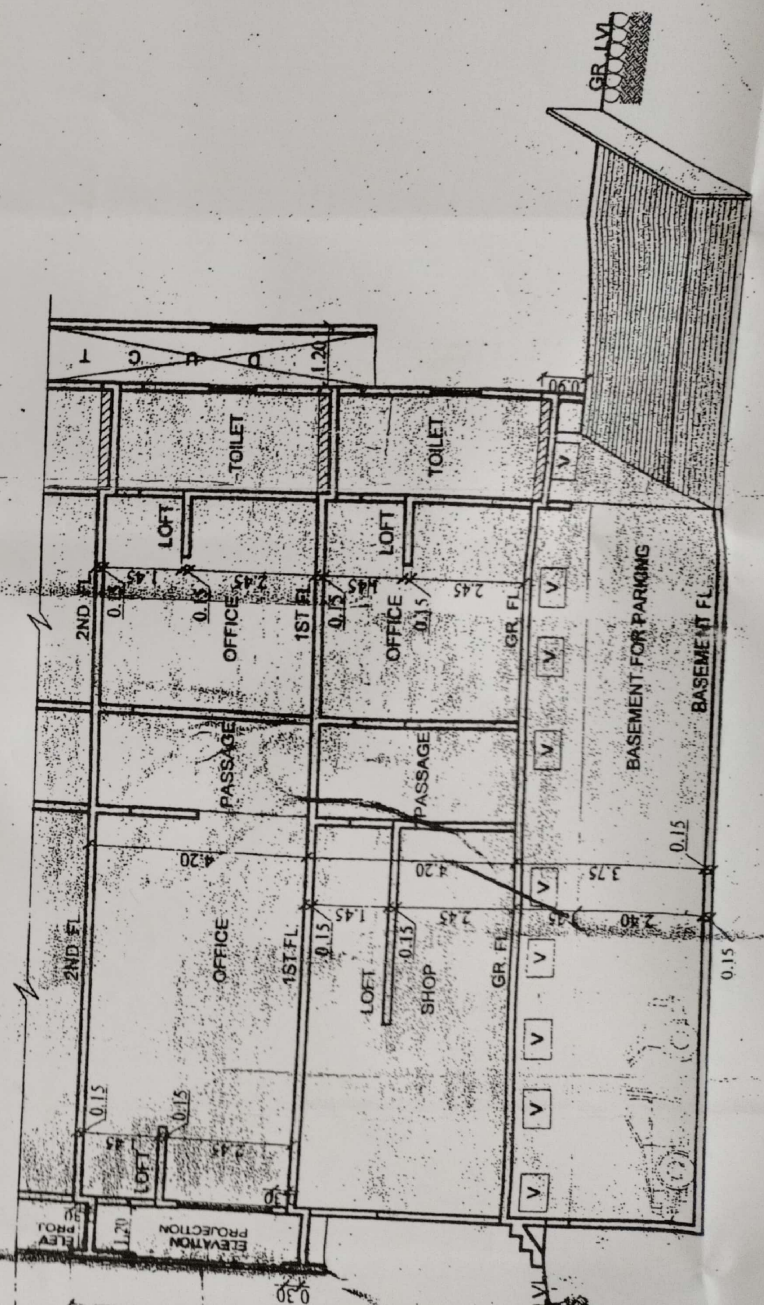
B. No. 1/AR 1/4
 9348 / BP (WS) / AR
 OF THE PREVIOUS PLANS
 SANCTIONED UNDER 26A
 CHE/16-10-2009



Certified True Copy
Harish D. Gandhi
 HARISH D. GANDHI
 Architect

SECTION 'X X'

SCALE 1:100



SECTION 'Y Y'

SCALE 1:100

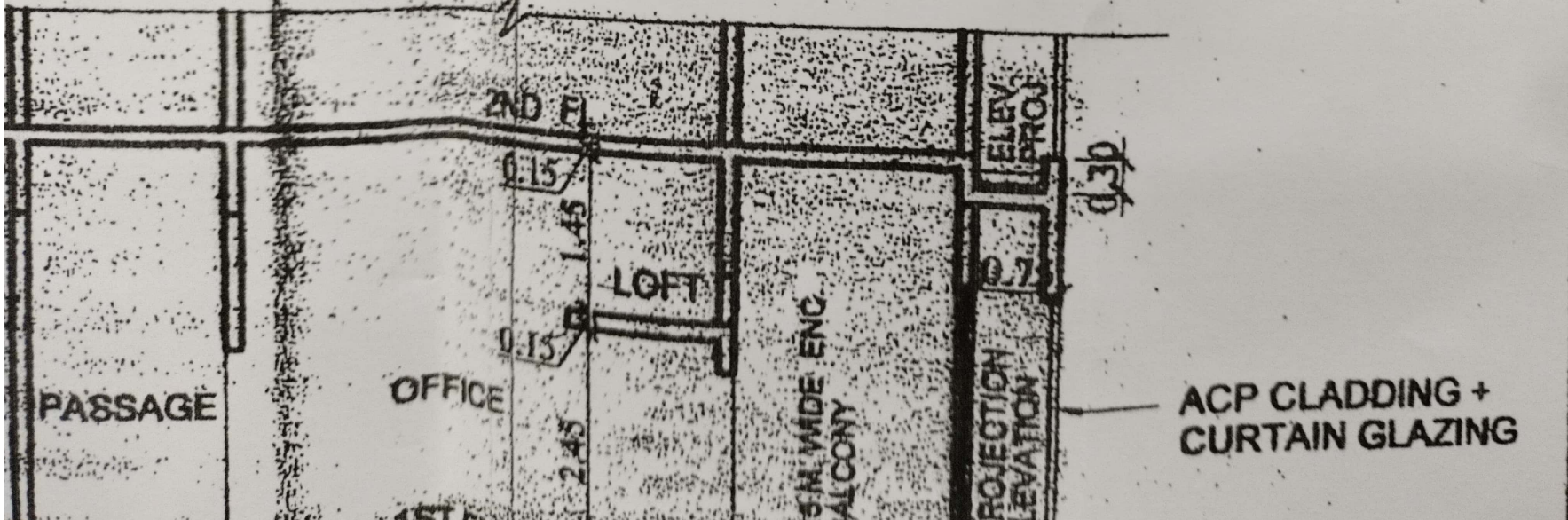
B.M.C. FILE NO. CHE 9348 / BP (WS) / AR **1/4**

OF THE PREVIOUS PLANS

SANCTIONED UNDER No.

CHE 9348 / BP / WH / AD

DATE 16-10-2009

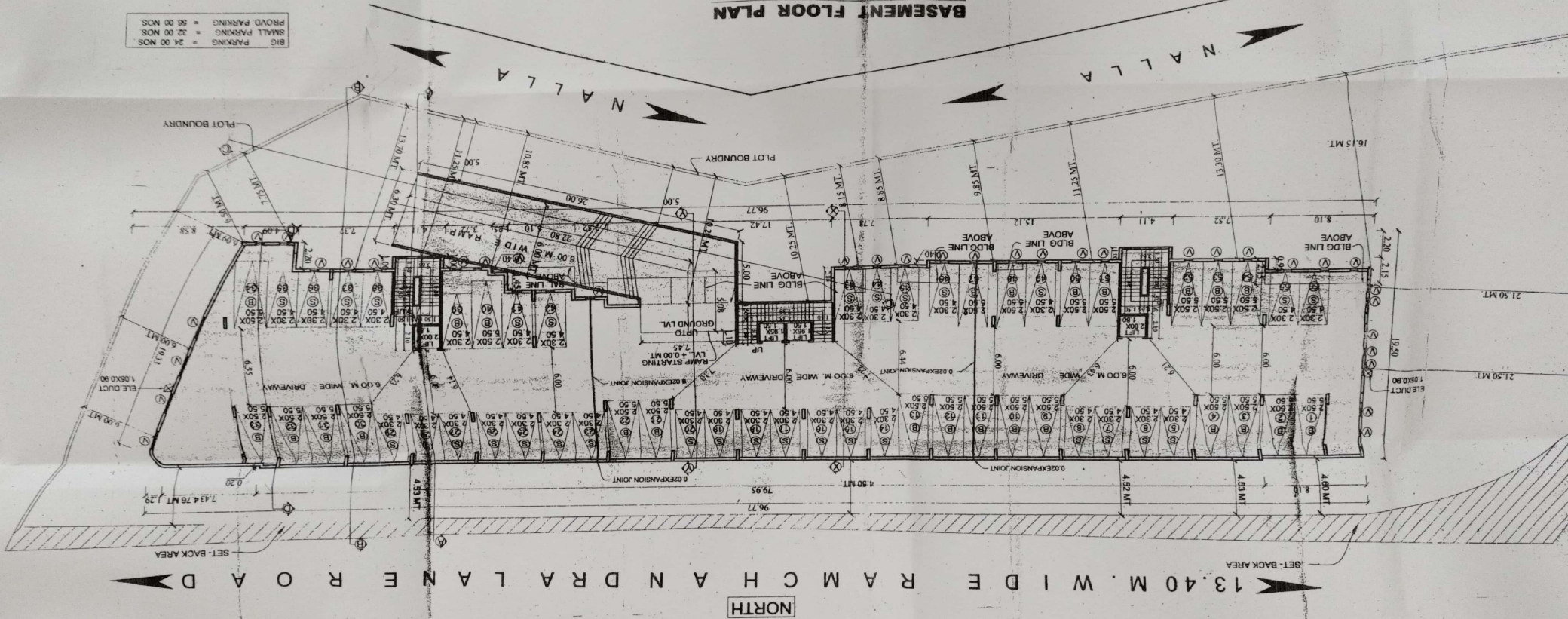


PRODUCED BY AN AUTODESK EDUCATIONAL PRODUCT

SCALE 1:200

BASEMENT FLOOR PLAN

- BIG PARKING = 24.00 NOS
- SMALL PARKING = 22.00 NOS
- PROVD. PARKING = 86.00 NOS



GROUND FLOOR PLAN

SCALE 1:200

SOUTH

NALLA

PLOT BOUNDARY

N A

LOADING UNLOADING

5.00M WIDE PATHWAY FOR NALLA CLEANING PURPOSE

EXISTING STRUCTURE ALL READY DEMOLISHED

PROPOSED SUB-STATION

R.G. PROVIDED 794.47 SQ.MT
R.G. REQUIRED 761.55 SQ.MT
15% R.G.

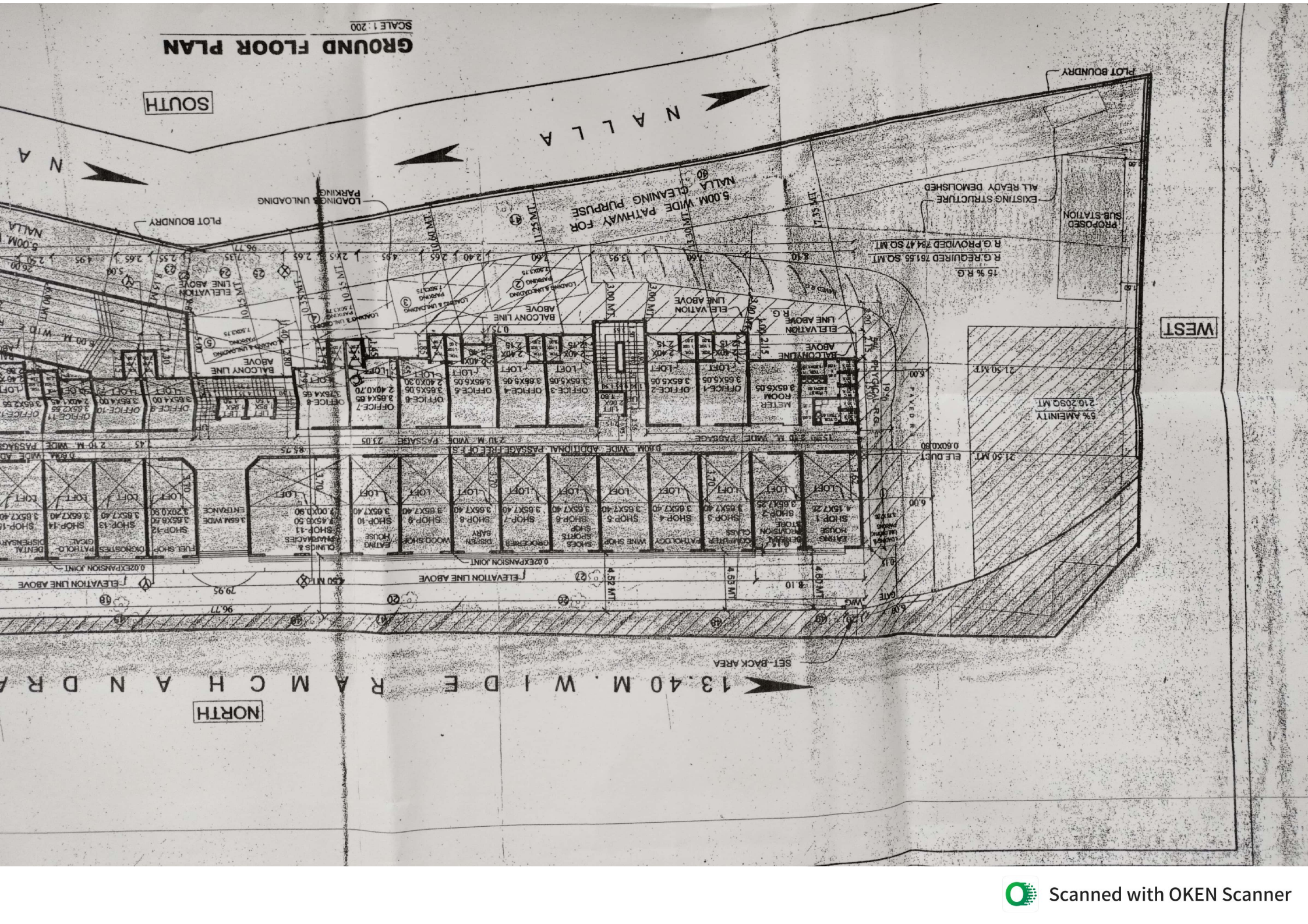
WEST

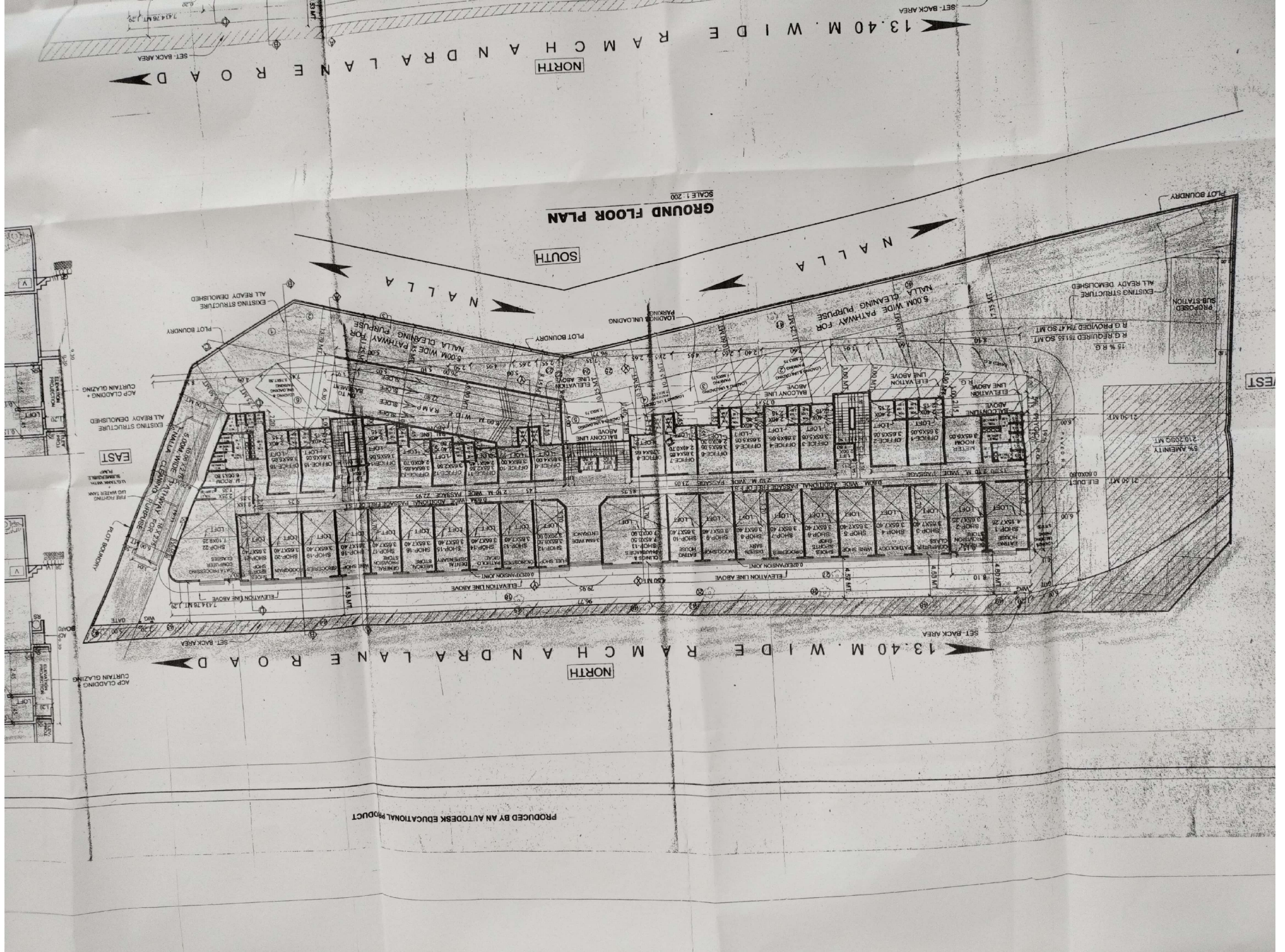
5% AMENITY
210.20 SQ.MT

NORTH

13.40M WIDE RAMCHANDRA

SET-BACK AREA





SCALE 1:200
GROUND FLOOR PLAN

PRODUCED BY AN AUTODESK EDUCATIONAL PRODUCT

HARSH D. GANDHI
 ARCHITECT PLANNING
 11, MARUTI LALIA
 1, COMPTON LANE, DUBLIN
 DUBLIN 15, IRELAND
 TEL: 01 454 5111
 FAX: 01 454 5112
 E-MAIL: HARSH@HARSHD.COM

DATE	DESCRIPTION	SCALE	DRAWN BY	CHECKED BY	DATE
03 MAR 2008	PROPOSED REAR PORTICO	1:100	SHRUTI	SHRUTI	03 MAR 2008
03 MAR 2008	PROPOSED REAR PORTICO	1:100	SHRUTI	SHRUTI	03 MAR 2008

NAME OF CLIENT: SHRI GOPALKRISHNA P. SHETTY
 ADDRESS: 13, 13A, 13B, 13C, 13D, 13E, 13F, 13G, 13H, 13I, 13J, 13K, 13L, 13M, 13N, 13O, 13P, 13Q, 13R, 13S, 13T, 13U, 13V, 13W, 13X, 13Y, 13Z, 13AA, 13AB, 13AC, 13AD, 13AE, 13AF, 13AG, 13AH, 13AI, 13AJ, 13AK, 13AL, 13AM, 13AN, 13AO, 13AP, 13AQ, 13AR, 13AS, 13AT, 13AU, 13AV, 13AW, 13AX, 13AY, 13AZ, 13BA, 13BB, 13BC, 13BD, 13BE, 13BF, 13BG, 13BH, 13BI, 13BJ, 13BK, 13BL, 13BM, 13BN, 13BO, 13BP, 13BQ, 13BR, 13BS, 13BT, 13BU, 13BV, 13BW, 13BX, 13BY, 13BZ, 13CA, 13CB, 13CC, 13CD, 13CE, 13CF, 13CG, 13CH, 13CI, 13CJ, 13CK, 13CL, 13CM, 13CN, 13CO, 13CP, 13CQ, 13CR, 13CS, 13CT, 13CU, 13CV, 13CW, 13CX, 13CY, 13CZ, 13DA, 13DB, 13DC, 13DD, 13DE, 13DF, 13DG, 13DH, 13DI, 13DJ, 13DK, 13DL, 13DM, 13DN, 13DO, 13DP, 13DQ, 13DR, 13DS, 13DT, 13DU, 13DV, 13DW, 13DX, 13DY, 13DZ, 13EA, 13EB, 13EC, 13ED, 13EE, 13EF, 13EG, 13EH, 13EI, 13EJ, 13EK, 13EL, 13EM, 13EN, 13EO, 13EP, 13EQ, 13ER, 13ES, 13ET, 13EU, 13EV, 13EW, 13EX, 13EY, 13EZ, 13FA, 13FB, 13FC, 13FD, 13FE, 13FF, 13FG, 13FH, 13FI, 13FJ, 13FK, 13FL, 13FM, 13FN, 13FO, 13FP, 13FQ, 13FR, 13FS, 13FT, 13FU, 13FV, 13FW, 13FX, 13FY, 13FZ, 13GA, 13GB, 13GC, 13GD, 13GE, 13GF, 13GG, 13GH, 13GI, 13GJ, 13GK, 13GL, 13GM, 13GN, 13GO, 13GP, 13GQ, 13GR, 13GS, 13GT, 13GU, 13GV, 13GW, 13GX, 13GY, 13GZ, 13HA, 13HB, 13HC, 13HD, 13HE, 13HF, 13HG, 13HH, 13HI, 13HJ, 13HK, 13HL, 13HM, 13HN, 13HO, 13HP, 13HQ, 13HR, 13HS, 13HT, 13HU, 13HV, 13HW, 13HX, 13HY, 13HZ, 13IA, 13IB, 13IC, 13ID, 13IE, 13IF, 13IG, 13IH, 13II, 13IJ, 13IK, 13IL, 13IM, 13IN, 13IO, 13IP, 13IQ, 13IR, 13IS, 13IT, 13IU, 13IV, 13IW, 13IX, 13IY, 13IZ, 13JA, 13JB, 13JC, 13JD, 13JE, 13JF, 13JG, 13JH, 13JI, 13JJ, 13JK, 13JL, 13JM, 13JN, 13JO, 13JP, 13JQ, 13JR, 13JS, 13JT, 13JU, 13JV, 13JW, 13JX, 13JY, 13JZ, 13KA, 13KB, 13KC, 13KD, 13KE, 13KF, 13KG, 13KH, 13KI, 13KJ, 13KK, 13KL, 13KM, 13KN, 13KO, 13KP, 13KQ, 13KR, 13KS, 13KT, 13KU, 13KV, 13KW, 13KX, 13KY, 13KZ, 13LA, 13LB, 13LC, 13LD, 13LE, 13LF, 13LG, 13LH, 13LI, 13LJ, 13LK, 13LL, 13LM, 13LN, 13LO, 13LP, 13LQ, 13LR, 13LS, 13LT, 13LU, 13LV, 13LW, 13LX, 13LY, 13LZ, 13MA, 13MB, 13MC, 13MD, 13ME, 13MF, 13MG, 13MH, 13MI, 13MJ, 13MK, 13ML, 13MN, 13MO, 13MP, 13MQ, 13MR, 13MS, 13MT, 13MU, 13MV, 13MW, 13MX, 13MY, 13MZ, 13NA, 13NB, 13NC, 13ND, 13NE, 13NF, 13NG, 13NH, 13NI, 13NJ, 13NK, 13NL, 13NM, 13NO, 13NP, 13NQ, 13NR, 13NS, 13NT, 13NU, 13NV, 13NW, 13NX, 13NY, 13NZ, 13OA, 13OB, 13OC, 13OD, 13OE, 13OF, 13OG, 13OH, 13OI, 13OJ, 13OK, 13OL, 13OM, 13ON, 13OO, 13OP, 13OQ, 13OR, 13OS, 13OT, 13OU, 13OV, 13OW, 13OX, 13OY, 13OZ, 13PA, 13PB, 13PC, 13PD, 13PE, 13PF, 13PG, 13PH, 13PI, 13PJ, 13PK, 13PL, 13PM, 13PN, 13PO, 13PP, 13PQ, 13PR, 13PS, 13PT, 13PU, 13PV, 13PW, 13PX, 13PY, 13PZ, 13QA, 13QB, 13QC, 13QD, 13QE, 13QF, 13QG, 13QH, 13QI, 13QJ, 13QK, 13QL, 13QM, 13QN, 13QO, 13QP, 13QQ, 13QR, 13QS, 13QT, 13QU, 13QV, 13QW, 13QX, 13QY, 13QZ, 13RA, 13RB, 13RC, 13RD, 13RE, 13RF, 13RG, 13RH, 13RI, 13RJ, 13RK, 13RL, 13RM, 13RN, 13RO, 13RP, 13RQ, 13RR, 13RS, 13RT, 13RU, 13RV, 13RW, 13RX, 13RY, 13RZ, 13SA, 13SB, 13SC, 13SD, 13SE, 13SF, 13SG, 13SH, 13SI, 13SJ, 13SK, 13SL, 13SM, 13SN, 13SO, 13SP, 13SQ, 13SR, 13SS, 13ST, 13SU, 13SV, 13SW, 13SX, 13SY, 13SZ, 13TA, 13TB, 13TC, 13TD, 13TE, 13TF, 13TG, 13TH, 13TI, 13TJ, 13TK, 13TL, 13TM, 13TN, 13TO, 13TP, 13TQ, 13TR, 13TS, 13TT, 13TU, 13TV, 13TW, 13TX, 13TY, 13TZ, 13UA, 13UB, 13UC, 13UD, 13UE, 13UF, 13UG, 13UH, 13UI, 13UJ, 13UK, 13UL, 13UM, 13UN, 13UO, 13UP, 13UQ, 13UR, 13US, 13UT, 13UU, 13UV, 13UW, 13UX, 13UY, 13UZ, 13VA, 13VB, 13VC, 13VD, 13VE, 13VF, 13VG, 13VH, 13VI, 13VJ, 13VK, 13VL, 13VM, 13VN, 13VO, 13VP, 13VQ, 13VR, 13VS, 13VT, 13VU, 13VV, 13VW, 13VX, 13VY, 13VZ, 13WA, 13WB, 13WC, 13WD, 13WE, 13WF, 13WG, 13WH, 13WI, 13WJ, 13WK, 13WL, 13WM, 13WN, 13WO, 13WP, 13WQ, 13WR, 13WS, 13WT, 13WU, 13WV, 13WW, 13WX, 13WY, 13WZ, 13XA, 13XB, 13XC, 13XD, 13XE, 13XF, 13XG, 13XH, 13XI, 13XJ, 13XK, 13XL, 13XM, 13XN, 13XO, 13XP, 13XQ, 13XR, 13XS, 13XT, 13XU, 13XV, 13XW, 13XX, 13XY, 13XZ, 13YA, 13YB, 13YC, 13YD, 13YE, 13YF, 13YG, 13YH, 13YI, 13YJ, 13YK, 13YL, 13YM, 13YN, 13YO, 13YP, 13YQ, 13YR, 13YS, 13YT, 13YU, 13YV, 13YW, 13YX, 13YY, 13YZ, 13ZA, 13ZB, 13ZC, 13ZD, 13ZE, 13ZF, 13ZG, 13ZH, 13ZI, 13ZJ, 13ZK, 13ZL, 13ZM, 13ZN, 13ZO, 13ZP, 13ZQ, 13ZR, 13ZS, 13ZT, 13ZU, 13ZV, 13ZW, 13ZX, 13ZY, 13ZZ

