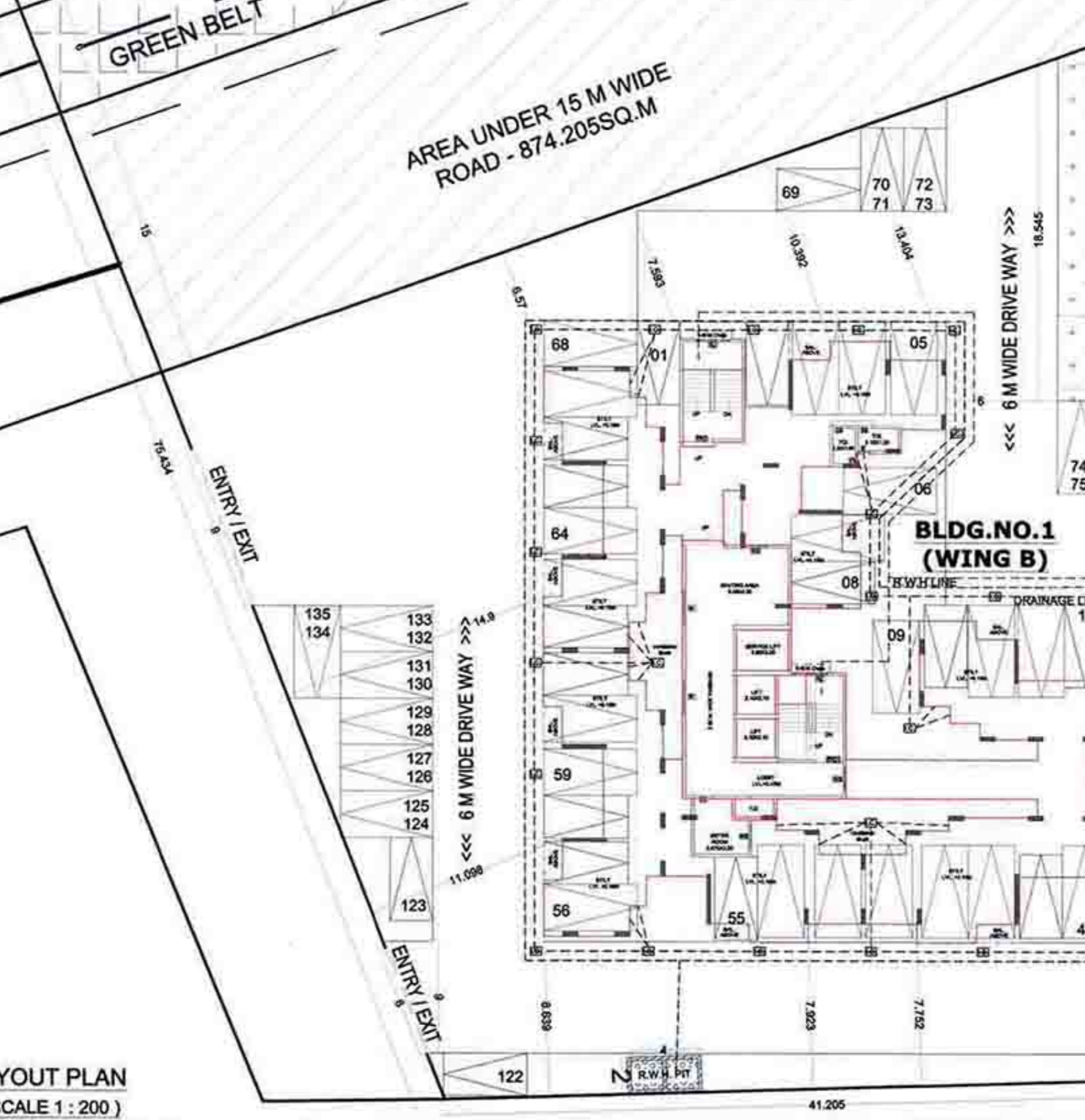
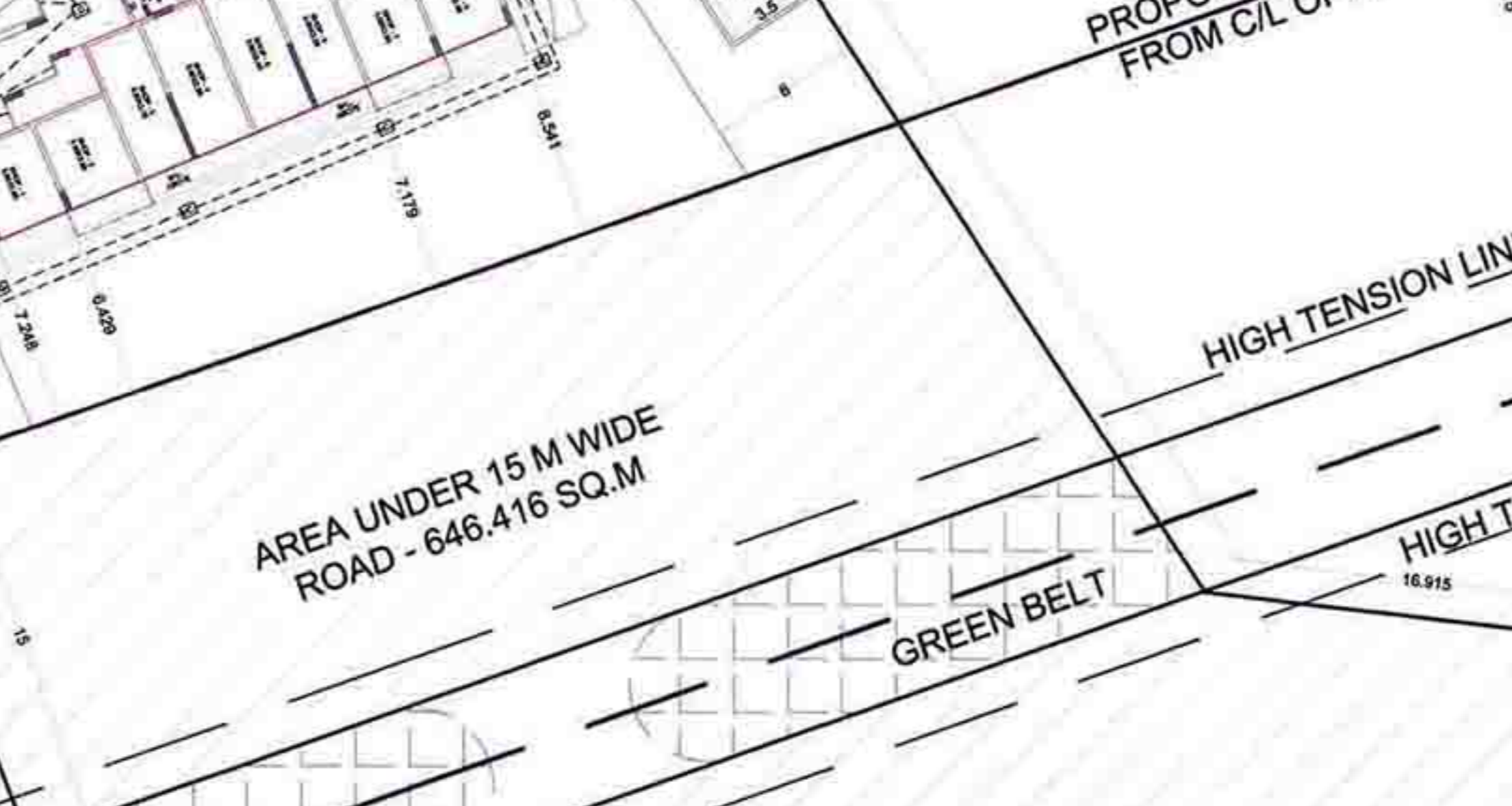
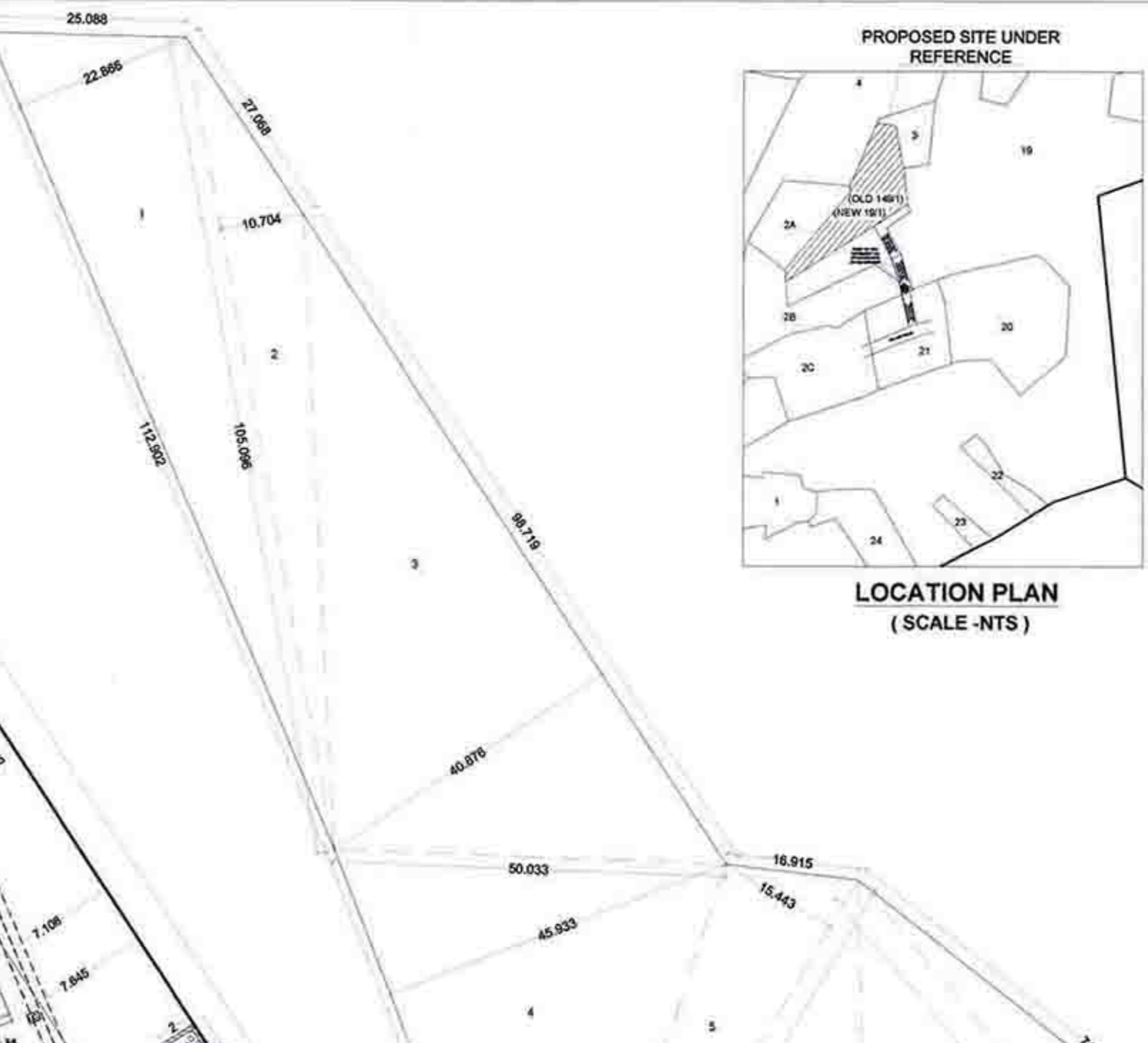
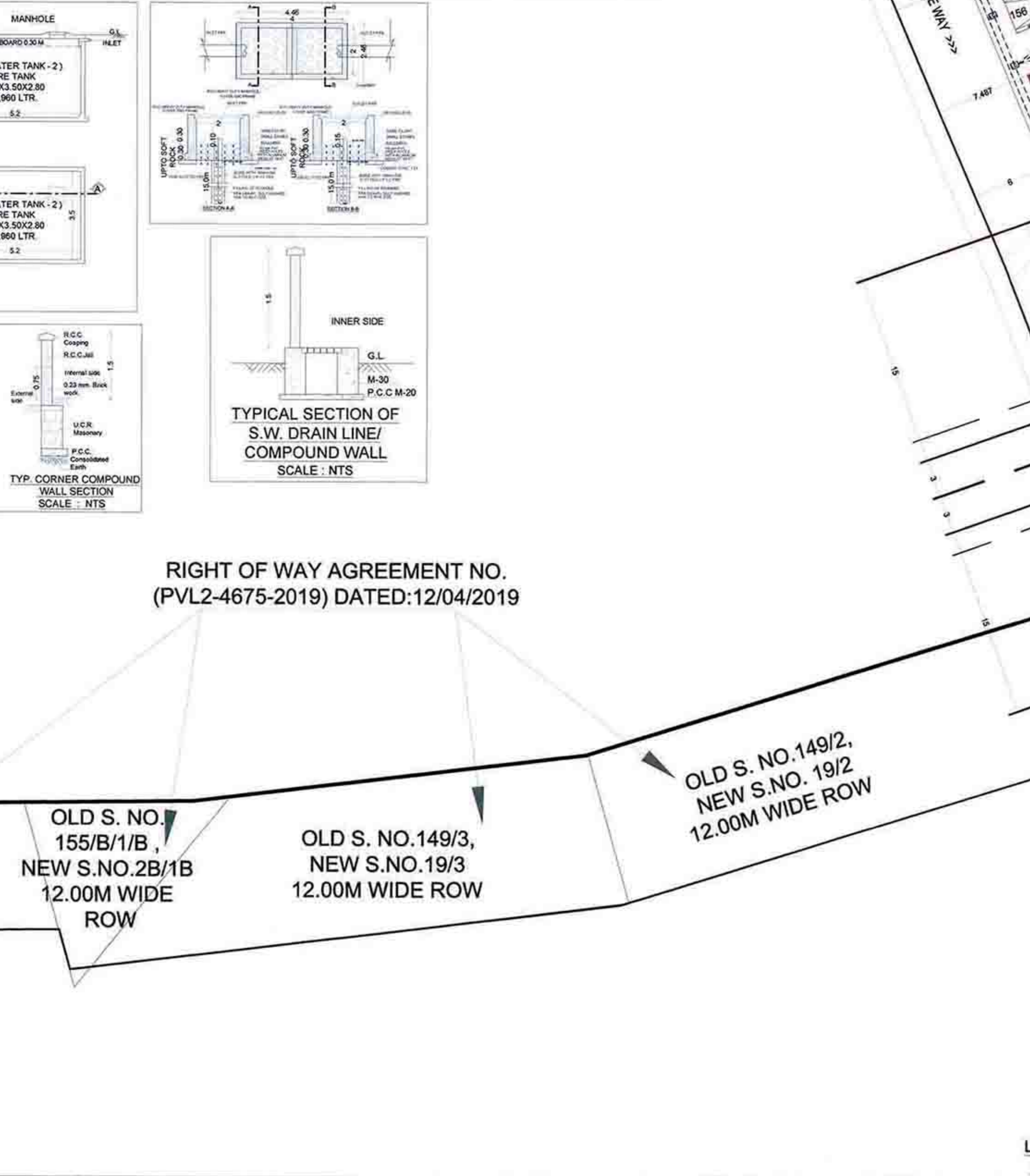
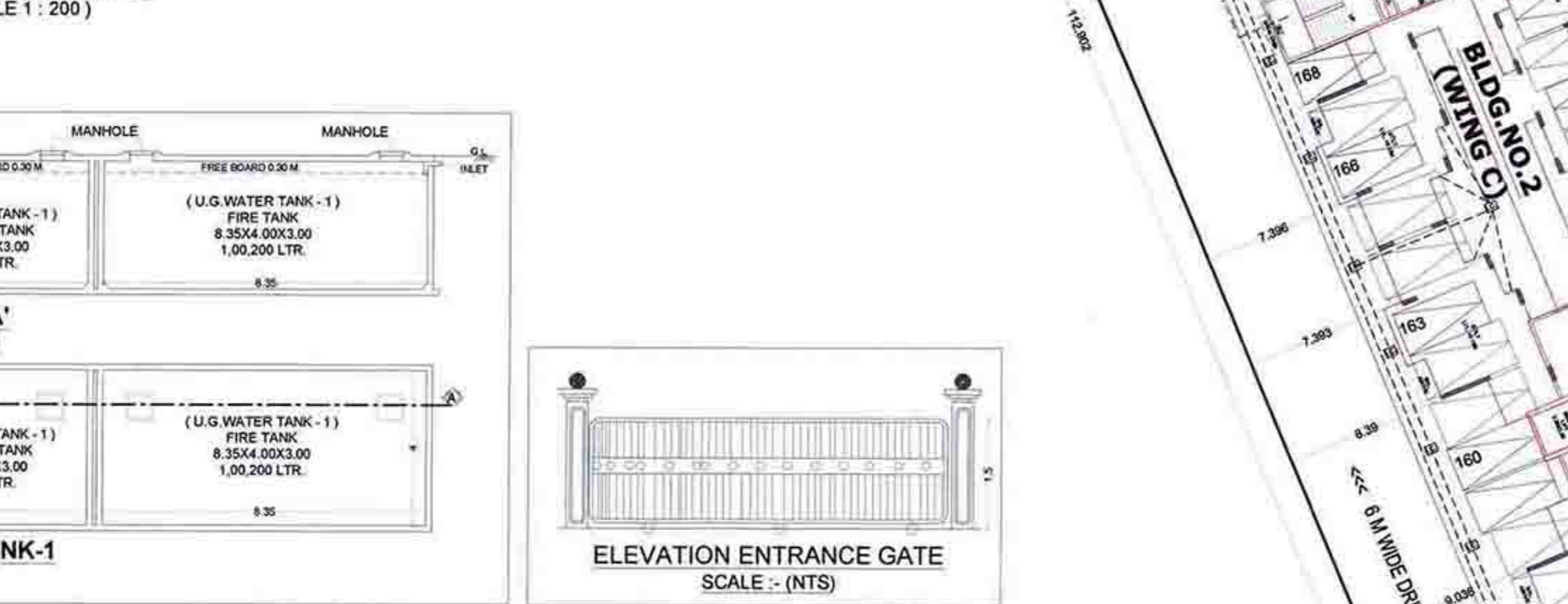
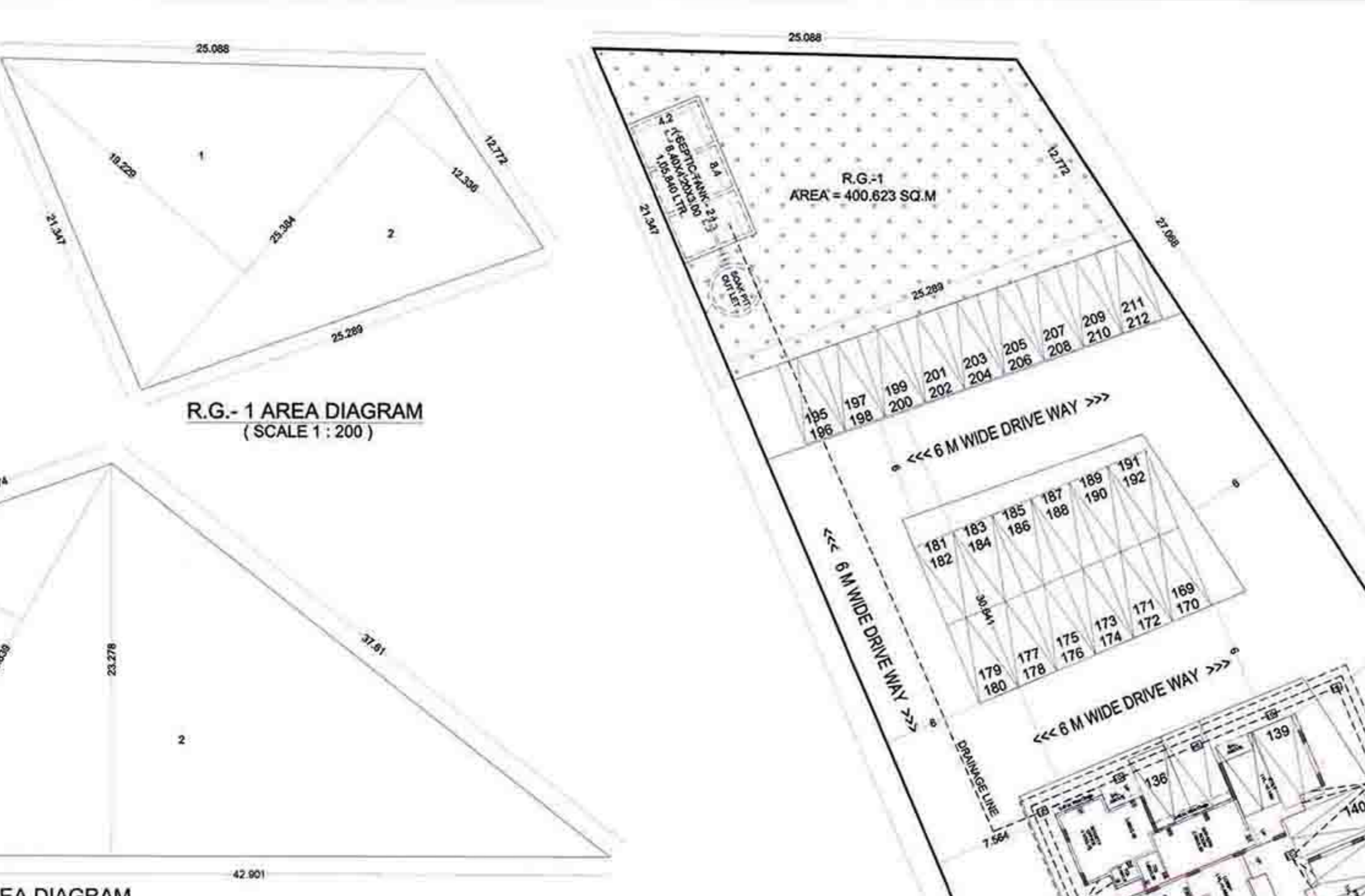
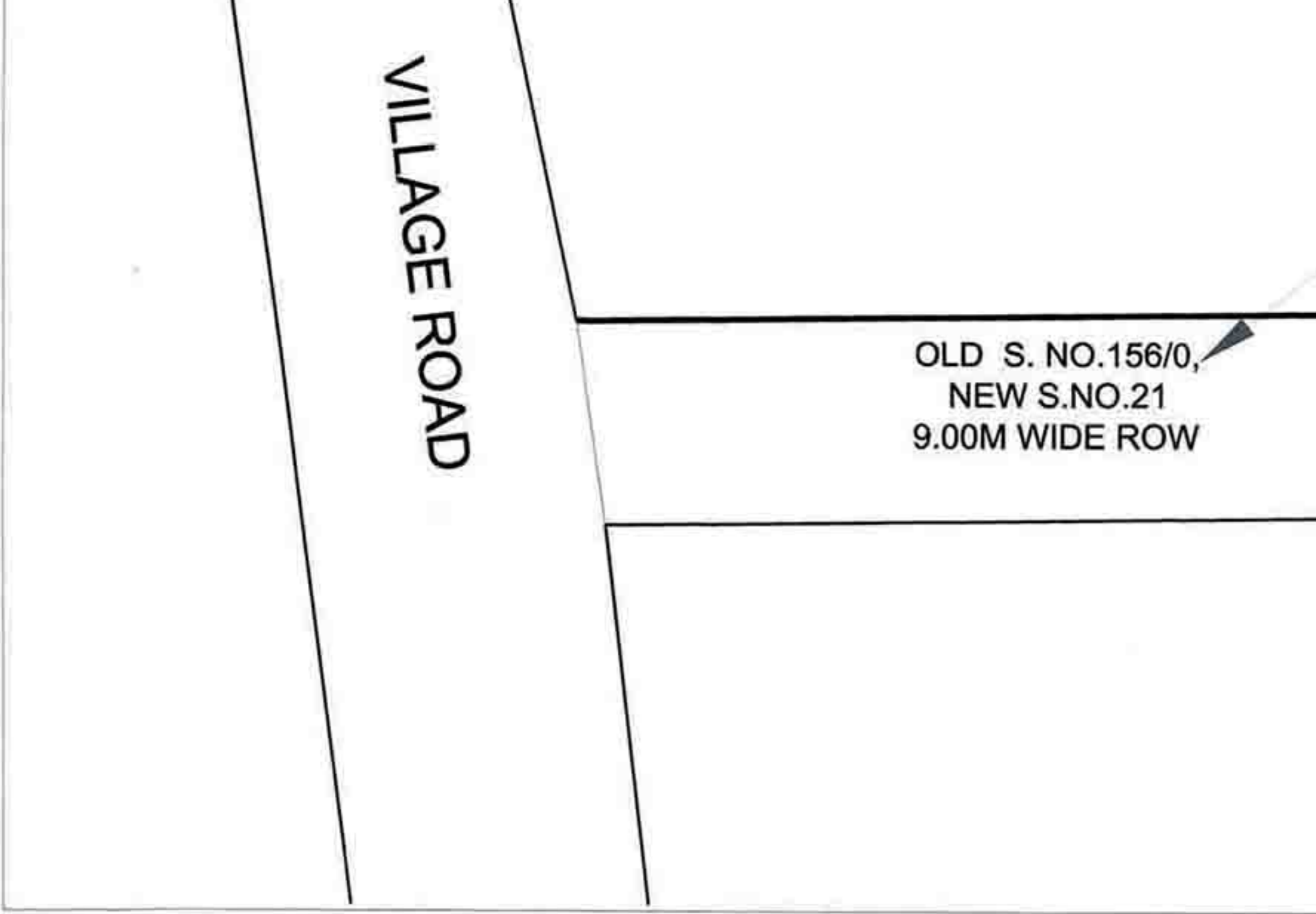
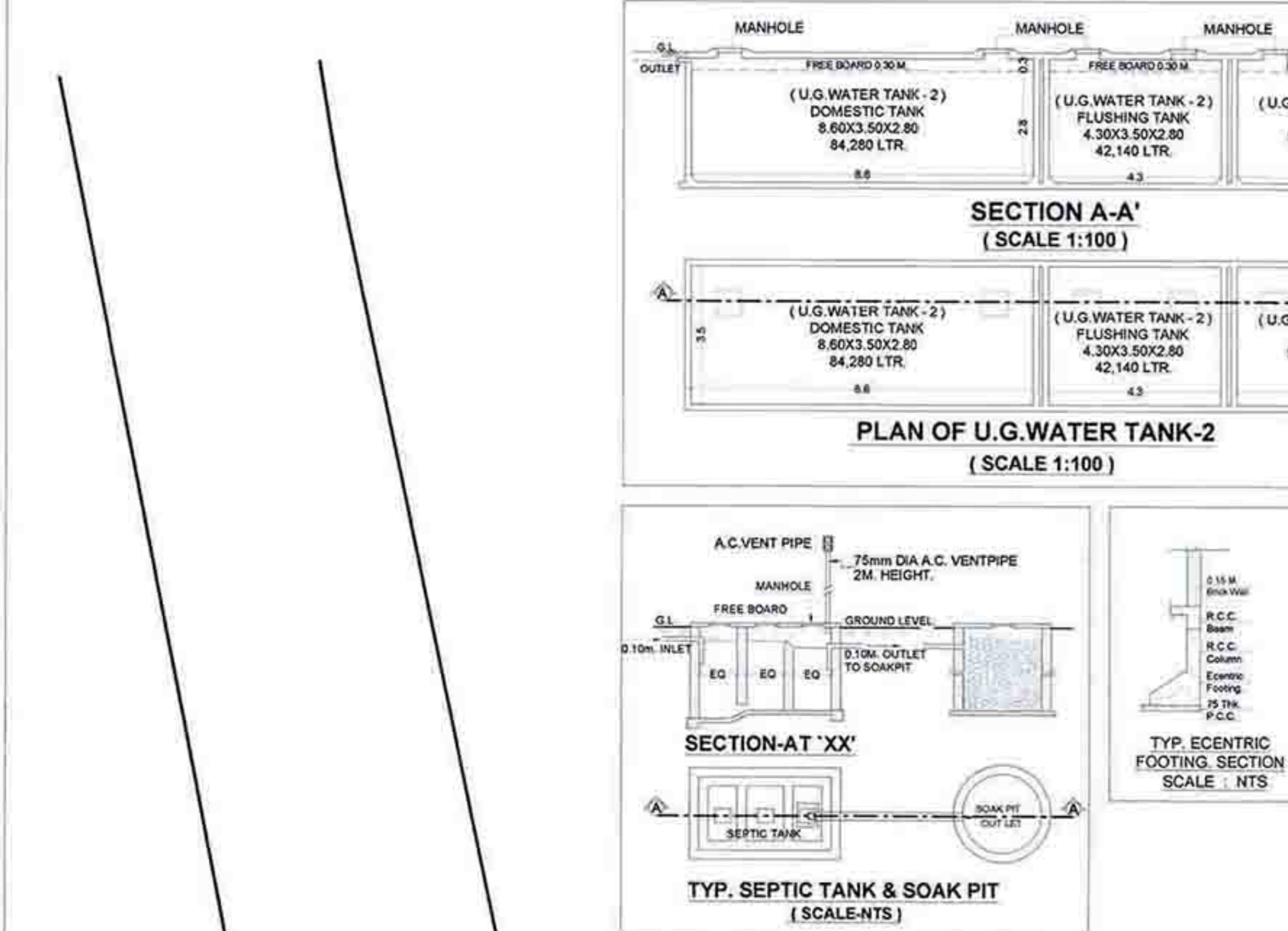


| Bldg. No. | Description (Flat) | Population | Total Population (Approx) | Cold Water Requirement | | Sewer Water Requirement | | Total Flow | Total Provided Capacity | Total Provided Septic Tank Capacity |
|--------------|--------------------|------------|---------------------------|------------------------|--------------|-------------------------|--------------|------------|-------------------------|-------------------------------------|
| | | | | Flushing (L) | Domestic (L) | Flushing (L) | Domestic (L) | | | |
| BUILDING - A | 87 | 5 | 435 | 54 | 23490 | 135 | 58735 | 82215 | 32400 | 73406 |
| BUILDING - B | 130 | 5 | 650 | 54 | 23490 | 135 | 61000 | 113400 | 32400 | 103250 |
| BUILDING - C | 120 | 5 | 600 | 54 | 23490 | 135 | 61000 | 113400 | 32400 | 103250 |
| TOTAL | 337 | 15 | 1685 | 162 | 70470 | 305 | 170200 | 308010 | 97200 | 279962 |

| WATER CAPACITY CALCULATION | | | | | | | | | |
|----------------------------|----------|------------------------------|------------------------------|-----------------------------------|---------------------------|--------------------------|------------------|--------------|---------|
| Wing | Flat No. | Required Domestic Liters (L) | Required Flushing Liters (L) | Additional Toilet Tank Liters (L) | Total Flushing Liters (L) | Fire Fighting Liters (L) | Total Liters (L) | Capacity (L) | Remarks |
| WING - A | 87 | 135,472.5 | 58,732.5 | 23,400 | 317,605 | 30,000 | 347,605 | 300,000 | 47,605 |
| WING - B | 130 | 153,000 | 66,000 | 23,400 | 342,400 | 30,000 | 372,400 | 300,000 | 72,400 |
| WING - C | 120 | 135,000 | 58,500 | 23,400 | 316,900 | 30,000 | 346,900 | 300,000 | 46,900 |
| TOTAL | 337 | 423,472.5 | 183,232.5 | 70,200 | 676,905 | 90,000 | 766,905 | 900,000 | 163,095 |

| PROPOSED D.O. WATER TANK | | | | | | | | | |
|--------------------------|----------|------------------------------|------------------------------|-----------------------------------|---------------------------|--------------------------|------------------|--------------|---------|
| Wing | Flat No. | Required Domestic Liters (L) | Required Flushing Liters (L) | Additional Toilet Tank Liters (L) | Total Flushing Liters (L) | Fire Fighting Liters (L) | Total Liters (L) | Capacity (L) | Remarks |
| WING - A | 87 | 135,472.5 | 58,732.5 | 23,400 | 317,605 | 30,000 | 347,605 | 300,000 | 47,605 |
| WING - B | 130 | 153,000 | 66,000 | 23,400 | 342,400 | 30,000 | 372,400 | 300,000 | 72,400 |
| WING - C | 120 | 135,000 | 58,500 | 23,400 | 316,900 | 30,000 | 346,900 | 300,000 | 46,900 |
| TOTAL | 337 | 423,472.5 | 183,232.5 | 70,200 | 676,905 | 90,000 | 766,905 | 900,000 | 163,095 |

| R.G. AREA CALCULATION | | | | | | | | | |
|-----------------------|----------|------------------------------|------------------------------|-----------------------------------|---------------------------|--------------------------|------------------|--------------|---------|
| Wing | Flat No. | Required Domestic Liters (L) | Required Flushing Liters (L) | Additional Toilet Tank Liters (L) | Total Flushing Liters (L) | Fire Fighting Liters (L) | Total Liters (L) | Capacity (L) | Remarks |
| WING - A | 87 | 135,472.5 | 58,732.5 | 23,400 | 317,605 | 30,000 | 347,605 | 300,000 | 47,605 |
| WING - B | 130 | 153,000 | 66,000 | 23,400 | 342,400 | 30,000 | 372,400 | 300,000 | 72,400 |
| WING - C | 120 | 135,000 | 58,500 | 23,400 | 316,900 | 30,000 | 346,900 | 300,000 | 46,900 |
| TOTAL | 337 | 423,472.5 | 183,232.5 | 70,200 | 676,905 | 90,000 | 766,905 | 900,000 | 163,095 |



| BUILT UP AREA STATEMENT | | AREA STATEMENT | |
|-------------------------|--------------|---------------------------------------|--------------|
| FLOOR | Area (sq. m) | Particulars | Area (sq. m) |
| GROUND | 18,712.00 | Area of Plot | 18,712.00 |
| 1ST | 47,300.00 | Area of Plot A, B, C to be considered | 47,300.00 |
| 2ND | 47,300.00 | Area of Plot A, B, C to be considered | 47,300.00 |
| 3RD | 47,300.00 | Area of Plot A, B, C to be considered | 47,300.00 |
| 4TH | 47,300.00 | Area of Plot A, B, C to be considered | 47,300.00 |
| 5TH | 47,300.00 | Area of Plot A, B, C to be considered | 47,300.00 |
| 6TH | 47,300.00 | Area of Plot A, B, C to be considered | 47,300.00 |
| 7TH | 47,300.00 | Area of Plot A, B, C to be considered | 47,300.00 |
| 8TH | 47,300.00 | Area of Plot A, B, C to be considered | 47,300.00 |
| 9TH | 47,300.00 | Area of Plot A, B, C to be considered | 47,300.00 |
| 10TH | 47,300.00 | Area of Plot A, B, C to be considered | 47,300.00 |
| 11TH | 47,300.00 | Area of Plot A, B, C to be considered | 47,300.00 |
| TOTAL | 500,100.00 | | 500,100.00 |

| PROT AREA CALCULATION (TIR BOUNDARY) | |
|--------------------------------------|--------------|
| Sl. No. | Area (sq. m) |
| 1 | 18,712.00 |
| 2 | 47,300.00 |
| 3 | 47,300.00 |
| 4 | 47,300.00 |
| 5 | 47,300.00 |
| 6 | 47,300.00 |
| 7 | 47,300.00 |
| 8 | 47,300.00 |
| 9 | 47,300.00 |
| 10 | 47,300.00 |
| 11 | 47,300.00 |
| 12 | 47,300.00 |
| 13 | 47,300.00 |
| 14 | 47,300.00 |
| 15 | 47,300.00 |
| 16 | 47,300.00 |
| 17 | 47,300.00 |
| 18 | 47,300.00 |
| 19 | 47,300.00 |
| 20 | 47,300.00 |
| 21 | 47,300.00 |
| 22 | 47,300.00 |
| 23 | 47,300.00 |
| 24 | 47,300.00 |
| 25 | 47,300.00 |
| 26 | 47,300.00 |
| 27 | 47,300.00 |
| 28 | 47,300.00 |
| 29 | 47,300.00 |
| 30 | 47,300.00 |
| 31 | 47,300.00 |
| 32 | 47,300.00 |
| 33 | 47,300.00 |
| 34 | 47,300.00 |
| 35 | 47,300.00 |
| 36 | 47,300.00 |
| 37 | 47,300.00 |
| 38 | 47,300.00 |
| 39 | 47,300.00 |
| 40 | 47,300.00 |
| 41 | 47,300.00 |
| 42 | 47,300.00 |
| 43 | 47,300.00 |
| 44 | 47,300.00 |
| 45 | 47,300.00 |
| 46 | 47,300.00 |
| 47 | 47,300.00 |
| 48 | 47,300.00 |
| 49 | 47,300.00 |
| 50 | 47,300.00 |
| 51 | 47,300.00 |
| 52 | 47,300.00 |
| 53 | 47,300.00 |
| 54 | 47,300.00 |
| 55 | 47,300.00 |
| 56 | 47,300.00 |
| 57 | 47,300.00 |
| 58 | 47,300.00 |
| 59 | 47,300.00 |
| 60 | 47,300.00 |
| 61 | 47,300.00 |
| 62 | 47,300.00 |
| 63 | 47,300.00 |
| 64 | 47,300.00 |
| 65 | 47,300.00 |
| 66 | 47,300.00 |
| 67 | 47,300.00 |
| 68 | 47,300.00 |
| 69 | 47,300.00 |
| 70 | 47,300.00 |
| 71 | 47,300.00 |
| 72 | 47,300.00 |
| 73 | 47,300.00 |
| 74 | 47,300.00 |
| 75 | 47,300.00 |
| 76 | 47,300.00 |
| 77 | 47,300.00 |
| 78 | 47,300.00 |
| 79 | 47,300.00 |
| 80 | 47,300.00 |
| 81 | 47,300.00 |
| 82 | 47,300.00 |
| 83 | 47,300.00 |
| 84 | 47,300.00 |
| 85 | 47,300.00 |
| 86 | 47,300.00 |
| 87 | 47,300.00 |
| 88 | 47,300.00 |
| 89 | 47,300.00 |
| 90 | 47,300.00 |
| 91 | 47,300.00 |
| 92 | 47,300.00 |
| 93 | 47,300.00 |
| 94 | 47,300.00 |
| 95 | 47,300.00 |
| 96 | 47,300.00 |
| 97 | 47,300.00 |
| 98 | 47,300.00 |
| 99 | 47,300.00 |
| 100 | 47,300.00 |
| 101 | 47,300.00 |
| 102 | 47,300.00 |
| 103 | 47,300.00 |
| 104 | 47,300.00 |
| 105 | 47,300.00 |
| 106 | 47,300.00 |
| 107 | 47,300.00 |
| 108 | 47,300.00 |
| 109 | 47,300.00 |
| 110 | 47,300.00 |
| 111 | 47,300.00 |
| 112 | 47,300.00 |
| 113 | 47,300.00 |
| 114 | 47,300.00 |
| 115 | 47,300.00 |
| 116 | 47,300.00 |
| 117 | 47,300.00 |
| 118 | 47,300.00 |
| 119 | 47,300.00 |
| 120 | 47,300.00 |
| 121 | 47,300.00 |
| 122 | 47,300.00 |
| 123 | 47,300.00 |
| 124 | 47,300.00 |
| 125 | 47,300.00 |
| 126 | 47,300.00 |
| 127 | 47,300.00 |
| 128 | 47,300.00 |
| 129 | 47,300.00 |
| 130 | 47,300.00 |
| 131 | 47,300.00 |
| 132 | 47,300.00 |
| 133 | 47,300.00 |
| 134 | 47,300.00 |
| 135 | 47,300.00 |
| 136 | 47,300.00 |
| 137 | 47,300.00 |
| 138 | 47,300.00 |
| 139 | 47,300.00 |
| 140 | 47,300.00 |
| 141 | 47,300.00 |
| 142 | 47,300.00 |
| 143 | 47,300.00 |
| 144 | 47,300.00 |
| 145 | 47,300.00 |
| 146 | 47,300.00 |
| 147 | 47,300.00 |
| 148 | 47,300.00 |
| 149 | 47,300.00 |
| 150 | 47,300.00 |
| 151 | 47,300.00 |
| 152 | 47,300.00 |
| 153 | 47,300.00 |
| 154 | 47,300.00 |
| 155 | 47,300.00 |
| 156 | 47,300.00 |
| 157 | 47,300.00 |
| 158 | 47,300.00 |
| 159 | 47,300.00 |
| 160 | 47,300.00 |
| 161 | 47,300.00 |
| 162 | 47,300.00 |
| 163 | 47,300.00 |
| 164 | 47,300.00 |
| 165 | 47,300.00 |
| 166 | 47,300.00 |
| 167 | 47,300.00 |
| 168 | 47,300.00 |
| 169 | 47,300.00 |
| 170 | 47,300.00 |
| 171 | 47,300.00 |
| 172 | 47,300.00 |
| 173 | 47,300.00 |
| 174 | 47,300.00 |
| 175 | 47,300.00 |
| 176 | 47,300.00 |
| 177 | 47,300.00 |
| 178 | 47,300.00 |
| 179 | 47,300.00 |
| 180 | 47,300.00 |
| 181 | 47,300.00 |
| 182 | 47,300.00 |
| 183 | 47,300.00 |
| 184 | 47,300.00 |
| 185 | 47,300.00 |
| 186 | 47,300.00 |
| 187 | 47,300.00 |
| 188 | 47,300.00 |
| 189 | 47,300.00 |
| 190 | 47,300.00 |
| 191 | 47,300.00 |
| 192 | 47,300.00 |
| 193 | 47,300.00 |
| 194 | 47,300.00 |
| 195 | 47,300.00 |
| 196 | 47,300.00 |
| 197 | 47,300.00 |
| 198 | 47,300.00 |
| 199 | 47,300.00 |
| 200 | 47,300.00 |
| 201 | 47,300.00 |
| 202 | 47,300.00 |
| 203 | 47,300.00 |
| 204 | 47,300.00 |
| 205 | 47,300.00 |
| 206 | 47,300.00 |
| 207 | 47,300.00 |
| 208 | 47,300.00 |
| 209 | 47,300.00 |
| 210 | 47,300.00 |
| 211 | 47,300.00 |
| 212 | 47,300.00 |

| ROAD WIDENING AREA CALCULATION | |
|--------------------------------|--------------|
| Sl. No. | Area (sq. m) |
| 1 | 18,712.00 |
| 2 | 47,300.00 |
| 3 | 47,300.00 |
| 4 | 47,300.00 |
| 5 | 47,300.00 |
| 6 | 47,300.00 |
| 7 | 47,300.00 |
| 8 | 47,300.00 |
| 9 | 47,300.00 |
| 10 | 47,300.00 |
| 11 | 47,300.00 |
| 12 | 47,300.00 |
| 13 | 47,300.00 |
| 14 | 47,300.00 |
| 15 | 47,300.00 |
| 16 | 47,300.00 |
| 17 | 47,300.00 |
| 18 | 47,300.00 |
| 19 | 47,300.00 |
| 20 | 47,300.00 |
| 21 | 47,300.00 |
| 22 | 47,300.00 |
| 23 | 47,300.00 |
| 24 | 47,300.00 |
| 25 | 47,300.00 |
| 26 | 47,300.00 |
| 27 | 47,300.00 |
| 28 | 47,300.00 |
| 29 | 47,300.00 |
| 30 | 47,300.00 |
| 31 | 47,300.00 |
| 32 | 47,300.00 |
| 33 | 47,300.00 |
| 34 | 47,300.00 |
| 35 | 47,300.00 |
| 36 | 47,300.00 |
| 37 | 47,300.00 |
| 38 | 47,300.00 |
| 39 | 47,300.00 |
| 40 | 47,300.00 |
| 41 | 47,30 |