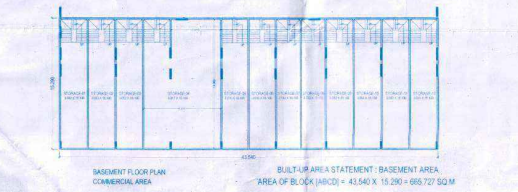


SECTION THRO' RAMP



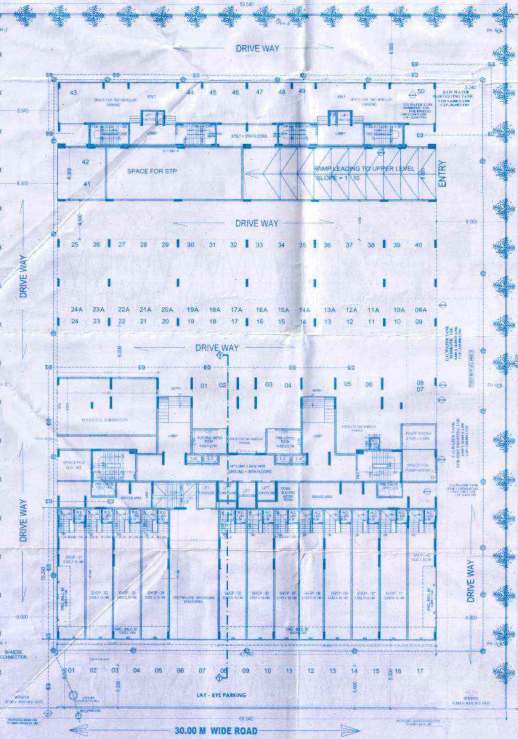
KEY PLAN

LOCATION PLAN



BASEMENT FLOOR PLAN

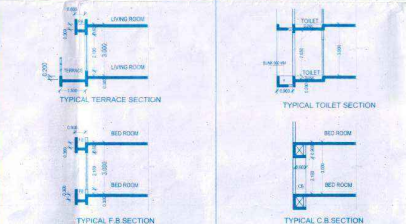
BUILT UP AREA STATEMENT: BASEMENT AREA  
AREA OF BLOCK (ARCS) = 41.56 X 15.20 = 632.72 SQ.M



LAYOUT PLAN



SECTION THRU U.G. TANK



TYPICAL TOILET SECTION

TYPICAL F.B. SECTION



SECTION THRO' RAIN WATER HARVESTING TANK



PLAN & ELEVATION OF GATE



PLAN & ELEVATION OF GATE



OH Tank/Booster Section



Section of Compound Wall



COMMON WALL DETAILS



CORNER COMPOUND WALL DETAILS



LAY-BYE PARKING

CUP BOARD AREA STATEMENT				SCHEDULE OF DOORS AND WINDOWS				
FLOORS	TYPE	SIZE	AREA	TYPE	SIZE	AREA	DESCRIPTION	
TYPICAL FLOOR (WITH TOILET)	CS1	3.000 X 2.100	6.300	1	1.100 X 2.100	2.310	T.W. PANELLED DOORS	
	CS2	3.000 X 2.100	6.300	1	1.900 X 2.100	3.990	T.W. FLUSH DOORS	
	CS3	3.000 X 2.100	6.300	1	3.000 X 2.100	6.300	SLIDING DOORS	
	CS4	3.000 X 2.100	6.300	1	2.100 X 2.100	4.410	ALUMINIUM SLIDING GLAZED WINDOWS	
	CS5	3.000 X 2.100	6.300	1	W1	1.800 X 2.100	5.460	ALUMINIUM SLIDING GLAZED WINDOWS
	CS6	3.000 X 2.100	6.300	1	W2	1.800 X 2.100	3.888	ALUMINIUM SLIDING GLAZED WINDOWS
	CS7	2.800 X 2.100	5.880	1	W3	2.900 X 2.100	6.090	ALUMINIUM SLIDING GLAZED WINDOWS
	CS8	3.000 X 2.100	6.300	1	W4	1.800 X 2.100	3.780	ALUMINIUM SLIDING GLAZED WINDOWS
	CS9	3.000 X 2.100	6.300	1	W5	1.800 X 2.100	4.040	ALUMINIUM SLIDING GLAZED WINDOWS
	CS10	3.000 X 2.100	6.300	1	W6	2.000 X 2.100	4.200	ALUMINIUM SLIDING GLAZED WINDOWS
	CS11	3.000 X 2.100	6.300	1	W7	1.600 X 2.100	3.360	ALUMINIUM SLIDING GLAZED WINDOWS
	CS12	3.000 X 2.100	6.300	1	W8	2.100 X 2.100	4.410	ALUMINIUM SLIDING GLAZED WINDOWS
	CS13	3.000 X 2.100	6.300	1	W9	1.800 X 2.100	3.780	ALUMINIUM SLIDING GLAZED WINDOWS
	CS14	3.000 X 2.100	6.300	1	W10	1.800 X 2.100	3.780	ALUMINIUM SLIDING GLAZED WINDOWS
	CS15	3.000 X 2.100	6.300	1	W11	0.800 X 1.000	0.800	LOUVER OPERABLE WINDOWS
	CS16	3.000 X 2.100	6.300	1	RS	3.250 X 2.000	6.500	M.ROLLING SHUTTERS
	CS17	3.000 X 2.100	6.300	1	RS1	3.100 X 2.000	6.200	M.ROLLING SHUTTERS
	CS18	3.000 X 2.100	6.300	1	RS2	3.250 X 2.000	6.500	M.ROLLING SHUTTERS
	CS19	3.000 X 2.100	6.300	1	RS3	3.100 X 2.000	6.200	M.ROLLING SHUTTERS
	CS20	3.000 X 2.100	6.300	1	RS4	3.100 X 2.000	6.200	M.ROLLING SHUTTERS
TOTAL FLOOR AREA				TOTAL FLOOR AREA				
33.54 X 15 FLR				33.54 X 15 FLR				
627.710 SQ.M				627.710 SQ.M				

WATER SUPPLY REQUIREMENTS			
FLOORS	TYPE	SIZE	AREA
TYPICAL FLOOR (WITH TOILET)	CS1	3.000 X 2.100	6.300
	CS2	3.000 X 2.100	6.300
	CS3	3.000 X 2.100	6.300
	CS4	3.000 X 2.100	6.300
	CS5	3.000 X 2.100	6.300
	CS6	3.000 X 2.100	6.300
	CS7	2.800 X 2.100	5.880
	CS8	3.000 X 2.100	6.300
	CS9	3.000 X 2.100	6.300
	CS10	3.000 X 2.100	6.300
TOTAL CAPACITY = 62,800 LTRS.			
WATER SUPPLY REQUIREMENTS (EVS/LIG BUILDING)			
FLOORS	TYPE	SIZE	AREA
TYPICAL FLOOR (WITH TOILET)	CS1	3.000 X 2.100	6.300
	CS2	3.000 X 2.100	6.300
	CS3	3.000 X 2.100	6.300
	CS4	3.000 X 2.100	6.300
	CS5	3.000 X 2.100	6.300
	CS6	3.000 X 2.100	6.300
	CS7	2.800 X 2.100	5.880
	CS8	3.000 X 2.100	6.300
	CS9	3.000 X 2.100	6.300
	CS10	3.000 X 2.100	6.300
TOTAL NATURAL TERRACE AREA = 31.074 SQ.M			
TOTAL TERRACE AREA = 512.942 SQ.M			
3. PARKING STATEMENT			
FLOORS	TYPE	SIZE	AREA
TYPICAL FLOOR (WITH TOILET)	CS1	3.000 X 2.100	6.300
	CS2	3.000 X 2.100	6.300
	CS3	3.000 X 2.100	6.300
	CS4	3.000 X 2.100	6.300
	CS5	3.000 X 2.100	6.300
	CS6	3.000 X 2.100	6.300
	CS7	2.800 X 2.100	5.880
	CS8	3.000 X 2.100	6.300
	CS9	3.000 X 2.100	6.300
	CS10	3.000 X 2.100	6.300
TOTAL P.B. AREA = 400.074 SQ.M			

STATEMENT OF G.R. RULES REFER FOR S.I. CALCULATION			
Sl. No.	DESCRIPTION	DETAILS	NOTES
51	Area of the B.A.	4800.100 SQ.M	
52	Type of Category of the Building	Detached Building	As per provision under regulation No. 10.1 on page 101
53	Proposed Category	Detached Building	
54	Maximum ground space	Required	As per provision under regulation No. 10.1 on page 101
55	1) 1st floor	4800.100	
56	2) 2nd floor	4800.100	
57	3) 3rd floor	4800.100	
58	4) 4th floor	4800.100	
59	5) 5th floor	4800.100	
60	6) 6th floor	4800.100	
61	7) 7th floor	4800.100	
62	8) 8th floor	4800.100	
63	9) 9th floor	4800.100	
64	10) 10th floor	4800.100	
65	11) 11th floor	4800.100	
66	12) 12th floor	4800.100	
67	13) 13th floor	4800.100	
68	14) 14th floor	4800.100	
69	15) 15th floor	4800.100	
70	16) 16th floor	4800.100	
71	17) 17th floor	4800.100	
72	18) 18th floor	4800.100	
73	19) 19th floor	4800.100	
74	20) 20th floor	4800.100	
75	21) 21st floor	4800.100	
76	22) 22nd floor	4800.100	
77	23) 23rd floor	4800.100	
78	24) 24th floor	4800.100	
79	25) 25th floor	4800.100	
80	26) 26th floor	4800.100	
81	27) 27th floor	4800.100	
82	28) 28th floor	4800.100	
83	29) 29th floor	4800.100	
84	30) 30th floor	4800.100	
85	31) 31st floor	4800.100	
86	32) 32nd floor	4800.100	
87	33) 33rd floor	4800.100	
88	34) 34th floor	4800.100	
89	35) 35th floor	4800.100	
90	36) 36th floor	4800.100	
91	37) 37th floor	4800.100	
92	38) 38th floor	4800.100	
93	39) 39th floor	4800.100	
94	40) 40th floor	4800.100	
95	41) 41st floor	4800.100	
96	42) 42nd floor	4800.100	
97	43) 43rd floor	4800.100	
98	44) 44th floor	4800.100	
99	45) 45th floor	4800.100	
100	46) 46th floor	4800.100	
101	47) 47th floor	4800.100	
102	48) 48th floor	4800.100	
103	49) 49th floor	4800.100	
104	50) 50th floor	4800.100	
105	51) 51st floor	4800.100	
106	52) 52nd floor	4800.100	
107	53) 53rd floor	4800.100	
108	54) 54th floor	4800.100	
109	55) 55th floor	4800.100	
110	56) 56th floor	4800.100	
111	57) 57th floor	4800.100	
112	58) 58th floor	4800.100	
113	59) 59th floor	4800.100	
114	60) 60th floor	4800.100	
115	61) 61st floor	4800.100	
116	62) 62nd floor	4800.100	
117	63) 63rd floor	4800.100	
118	64) 64th floor	4800.100	
119	65) 65th floor	4800.100	
120	66) 66th floor	4800.100	
121	67) 67th floor	4800.100	
122	68) 68th floor	4800.100	
123	69) 69th floor	4800.100	
124	70) 70th floor	4800.100	
125	71) 71st floor	4800.100	
126	72) 72nd floor	4800.100	
127	73) 73rd floor	4800.100	
128	74) 74th floor	4800.100	
129	75) 75th floor	4800.100	
130	76) 76th floor	4800.100	
131	77) 77th floor	4800.100	
132	78) 78th floor	4800.100	
133	79) 79th floor	4800.100	
134	80) 80th floor	4800.100	
135	81) 81st floor	4800.100	
136	82) 82nd floor	4800.100	
137	83) 83rd floor	4800.100	
138	84) 84th floor	4800.100	
139	85) 85th floor	4800.100	
140	86) 86th floor	4800.100	
141	87) 87th floor	4800.100	
142	88) 88th floor	4800.100	
143	89) 89th floor	4800.100	
144	90) 90th floor	4800.100	
145	91) 91st floor	4800.100	
146	92) 92nd floor	4800.100	
147	93) 93rd floor	4800.100	
148	94) 94th floor	4800.100	
149	95) 95th floor	4800.100	
150	96) 96th floor	4800.100	
151	97) 97th floor	4800.100	
152	98) 98th floor	4800.100	
153	99) 99th floor	4800.100	
154	100) 100th floor	4800.100	
155	101) 101st floor	4800.100	
156	102) 102nd floor	4800.100	
157	103) 103rd floor	4800.100	
158	104) 104th floor	4800.100	
159	105) 105th floor	4800.100	
160	106) 106th floor	4800.100	
161	107) 107th floor	4800.100	
162	108) 108th floor	4800.100	
163	109) 109th floor	4800.100	
164	110) 110th floor	4800.100	
165	111) 111th floor	4800.100	
166	112) 112th floor	4800.100	
167	113) 113th floor	4800.100	
168	114) 114th floor	4800.100	
169	115) 115th floor	4800.100	
170	116) 116th floor	4800.100	
171	117) 117th floor	4800.100	
172	118) 118th floor	4800.100	
173	119) 119th floor	4800.100	
174	120) 120th floor	4800.100	
175	121) 121st floor	4800.100	
176	122) 122nd floor	4800.100	
177	123) 123rd floor	4800.100	
178	124) 124th floor	4800.100	
179	125) 125th floor	4800.100	
180	126) 126th floor	4800.100	
181	127) 127th floor	4800.100	
182	128) 128th floor	4800.100	
183	129) 129th floor	4800.100	
184	130) 130th floor	4800.100	
185			