

Ground floor

1st fl

$$\begin{aligned} \text{Hall area} &\rightarrow 5.2 \times 6.75 = 35.1 = 377.67 \\ &+ 3.65 \times 5.35 = 19.52 = 210.11 \end{aligned} \rightarrow 587.78 \text{ sqft}$$

$$\text{Kitchen} \rightarrow 5.01 \times 3.95 = 212.93 \text{ sqft}$$

$$\text{Bath area} \rightarrow 1.4 \times 1.4 = 21.08 \text{ sqft}$$

$$\text{Toilet} \rightarrow 1.43 \times 1.3 = 20.02 \text{ sqft}$$

$$\text{Lift} \rightarrow 1.2 \times 1.2 = 15.49 \text{ sqft}$$

Area



857.3

1st floor

$$\text{Bedroom} \rightarrow 6.2 \times 5.1 = 340.2 \text{ sqft} - \textcircled{1}$$

$$\text{Toilet} \rightarrow 5.7 \times 1.35 = 82.56 \text{ sqft}$$

$$\text{Lift} \rightarrow 1.2 \times 1.2 = 15.49 \text{ sqft}$$

$$\text{Passage} \rightarrow 5.6 \times 2.9 = 174.74 \text{ sqft}$$

$$\text{Bedroom} \rightarrow 2.2 \times 3.7 = 87.58 \text{ sqft}$$

$$\text{Passage} \rightarrow 1.2 \times 1.6 = 20.65 \text{ sqft}$$

Area



721.02

2nd floor

$$\text{Bedroom} \rightarrow 3.75 \times 5.6 = 225.96$$

$$\text{Toilet} \rightarrow 2.3 \times 1.26 = 31.18$$

$$\text{Storage} \rightarrow 1.2 \times 1.5 = 19.31$$

$$\text{Bedroom} \rightarrow 5.8 \times 5.15 = 320.50$$

$$\text{Toilet} \rightarrow 5.7 \times 1.35 = 82.79$$

$$\text{Passage} \rightarrow 5.6 \times 2.9 = 174.74$$

$$\text{Passage} \rightarrow 1.2 \times 1.6 = 20.65$$

$$\text{Lift} \rightarrow 1.2 \times 1.2 = 15.49$$

Area



890.64

3rd floor

$$\text{Bedroom} \rightarrow 5.15 \times 6.65 = 368.50$$

$$\text{Toilet} \rightarrow 5.7 \times 1.35 = 82.79$$

$$\text{Terrace} \rightarrow 7 \times 4.6 = 346.47$$

$$\text{Lift} \rightarrow 1.2 \times 1.2 = 15.49$$

$$\text{Passage} \rightarrow 5.6 \times 2.9 = 174.74$$

$$+ 1.2 \times 1.6 = 20.65$$

Area



1008.64

4th floor

$$\text{Terrace floor} \rightarrow \text{Passage} \rightarrow 5.6 \times 2.9 = 174.74$$

$$+ 1.2 \times 1.6 = 20.65$$

$$\text{Lift} \rightarrow 1.2 \times 1.2 = 15.49$$

$$\text{Open area} \rightarrow 7.3 \times 6.7 = 526.27$$

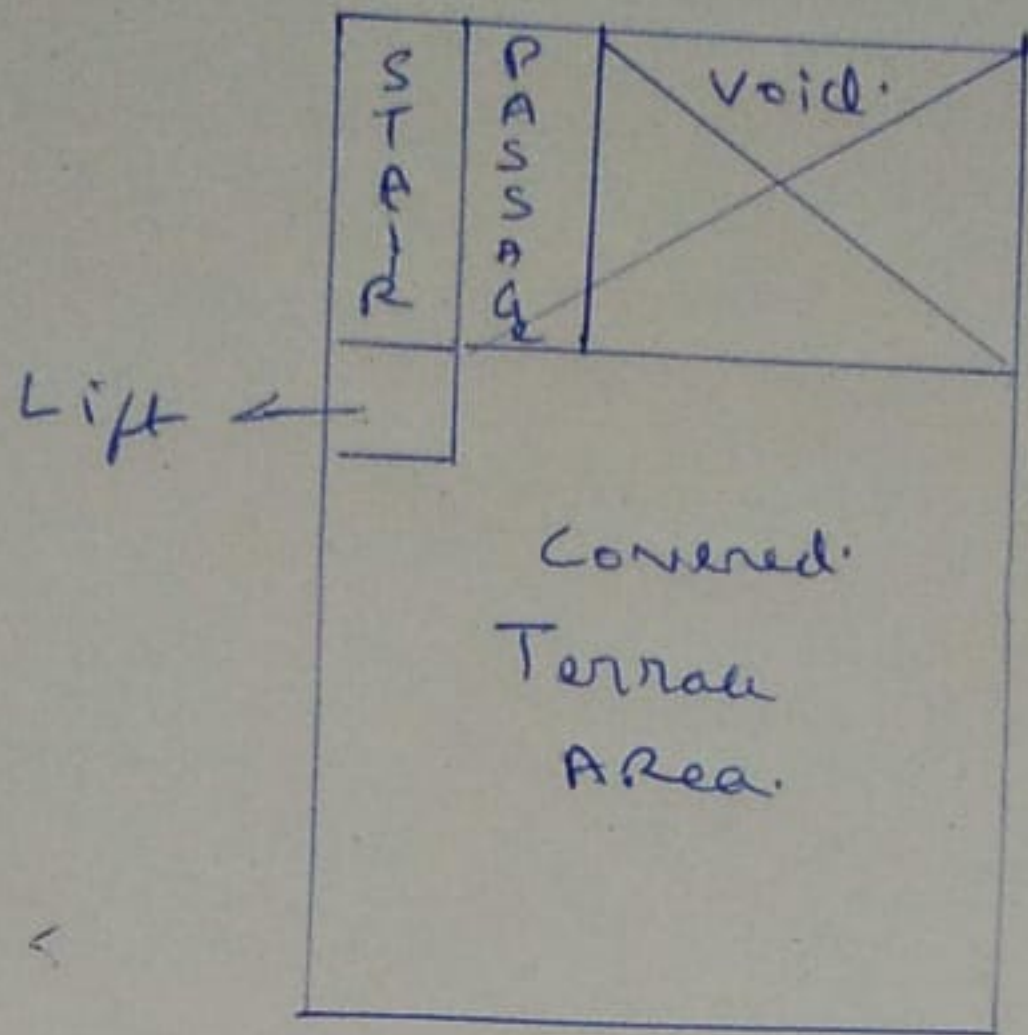
$$+ 6.7 \times 1 = 72.09$$

$$+ 7.3 \times 1 = 78.54$$

Area



887.78



Terrace floor \rightarrow 887.78 sqft

Note \Rightarrow Bungalow consist of Grnt 3 storey
with covered terrace.

Construction of structure \rightarrow 2014

Bought this property by owner in 2020 @ 8.85 Cr.

Plot area \rightarrow 200 Sqmt.

As per owner \rightarrow 6700 Sqft Carpet area

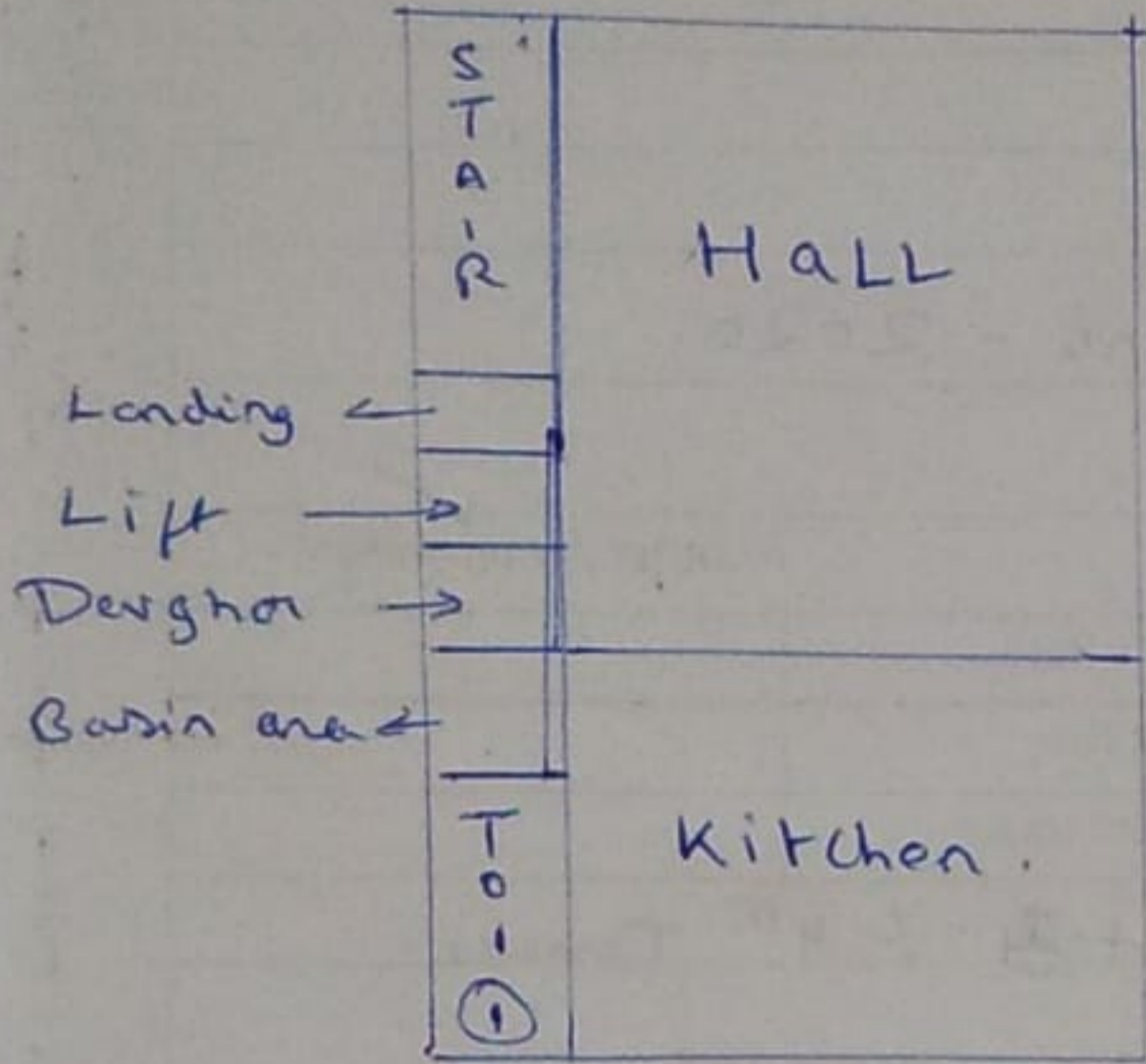
Total area as per physical inspection

gr + 1st + 2nd + 3rd + Terrace

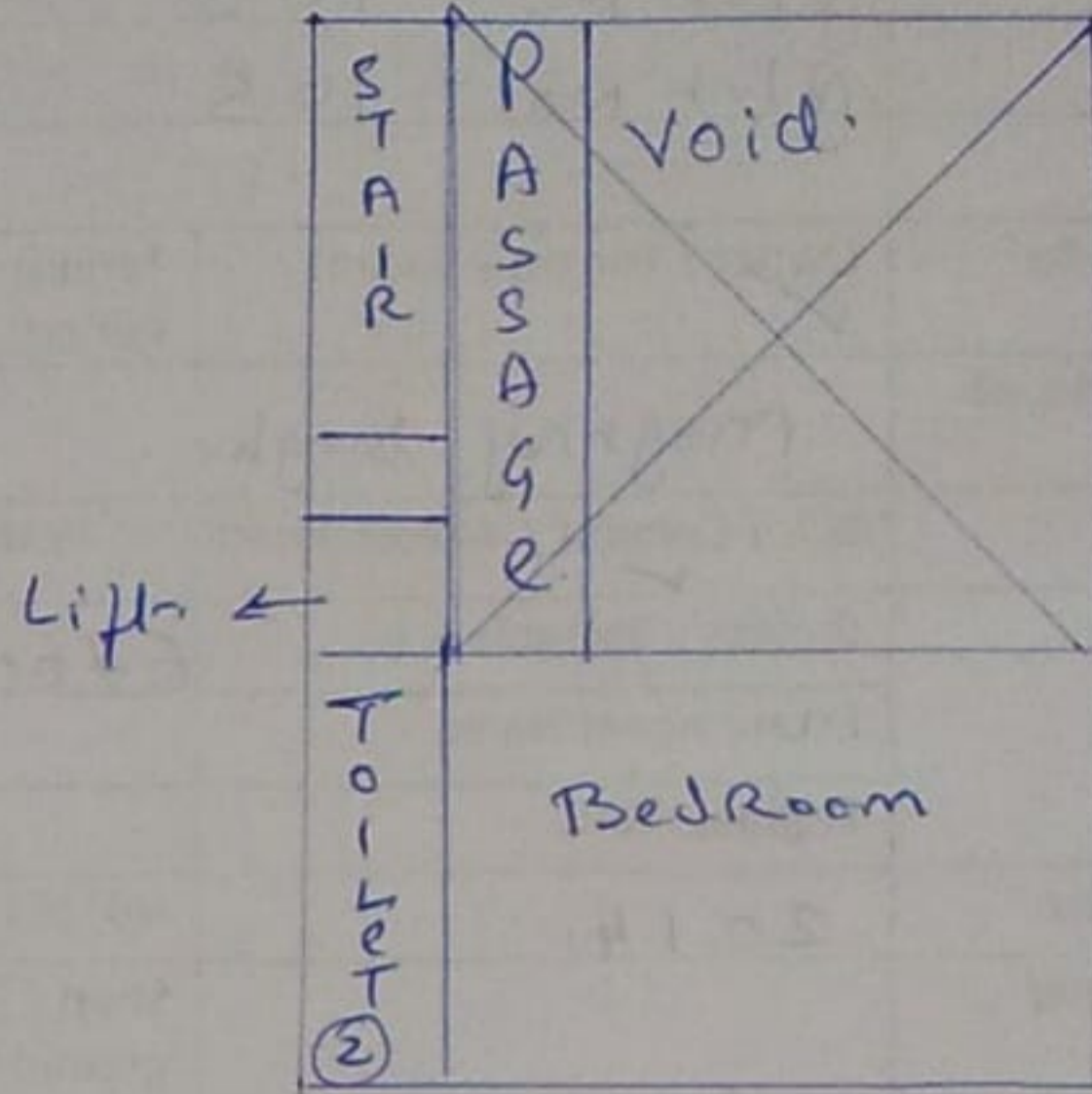
$857.3 + 721 + 890.64 + 1008.64 + 887.78$

$= 4365.36$

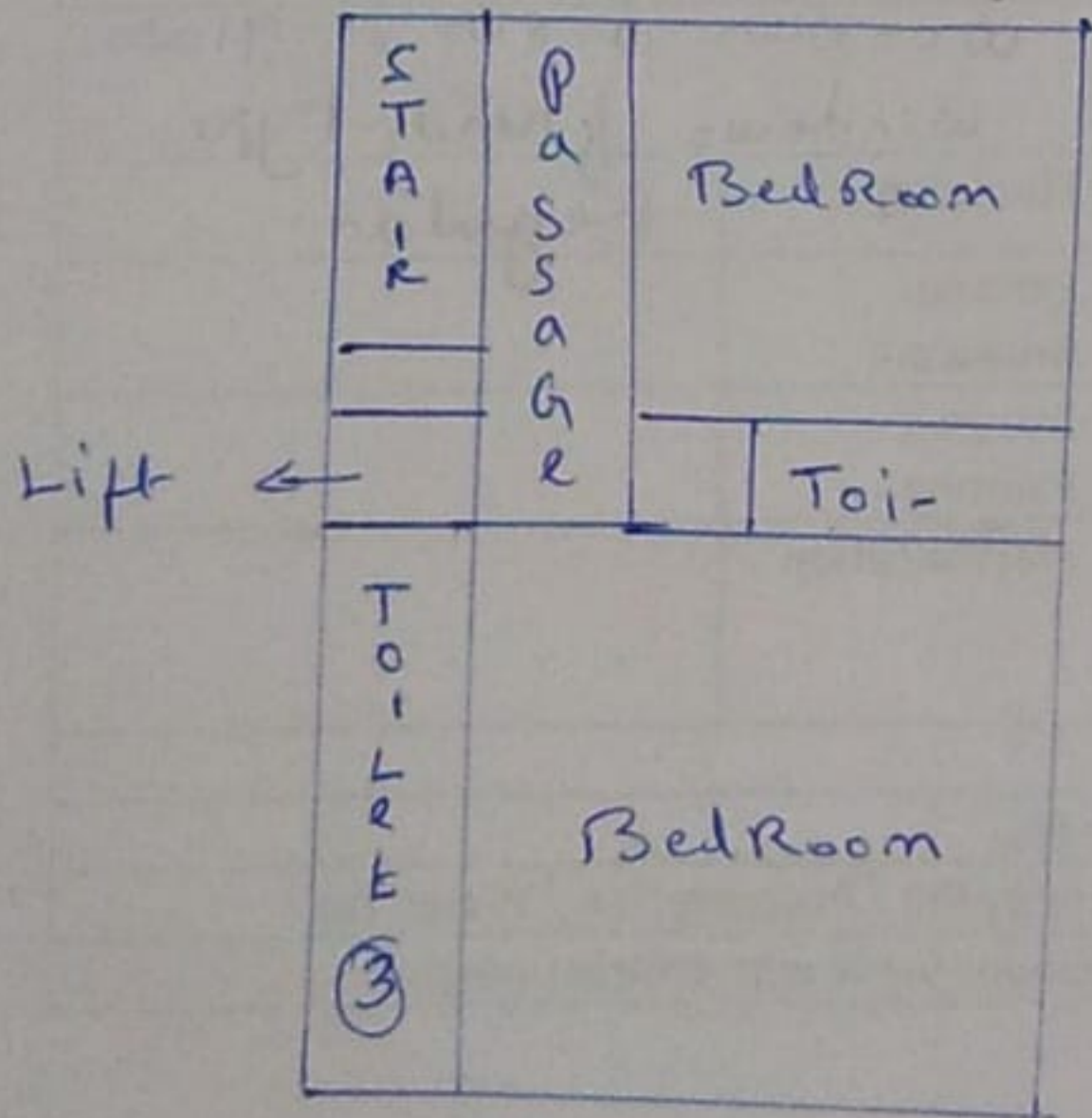
ground floor → 857.3 sqft



First floor = 721. sqft



2nd floor → 890.64 sqft



3rd floor → 1008.64 sqft

