

STAMP OF APPROVAL


3/3

APPROVED

As per the accompanying
occupancy Certificate

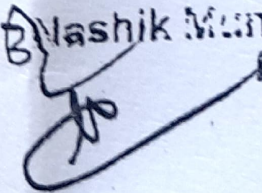
No. Nashik/C2/25083/2020

Date : 06/03/2020



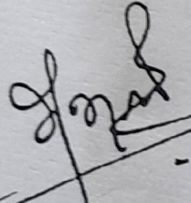
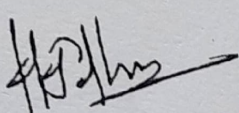
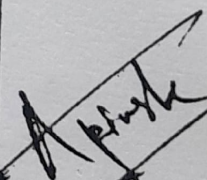
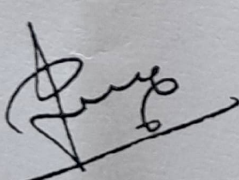
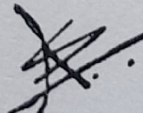
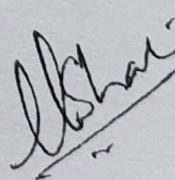
TOWN PLANNING

Nashik Municipal Corporation
Nashik

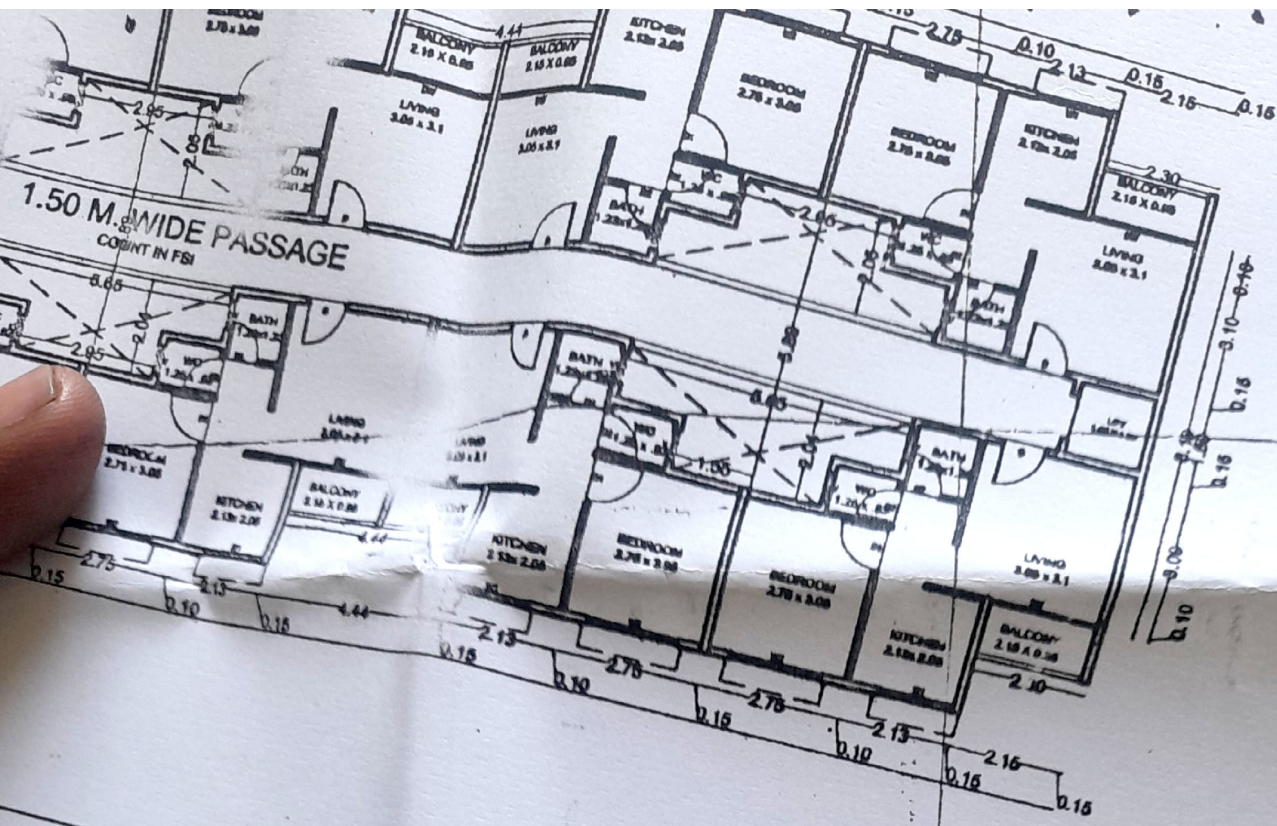


APPROVED NO. : LND/BP/C2/201/1741
DATED : 21/06/2017

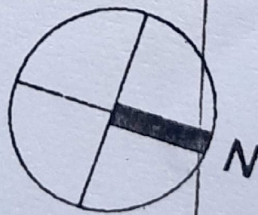
COMPLETION PLAN OF LOW COST
HOUSING UNDER PMAY IN GUT NO. 1560 / 1
AT ADGAON DIST. NASHIK
FOR : NASHIK HSG & AREA DEVELOPMENT
BOARD (A MHADA UNIT)

		
EX. ENGINEER NHADB, NASHIK	DY. ENGINEER NHADB, NASHIK	SEC. ENGINEER NHADB, NASHIK
		
JR. ARCHITECT NHADB, NASHIK	ARCHITECTS SIGN	STRUC.ENGG. SIGN
FILE NO. -	DRAWN BY - SWAPNIL	DATE - 20/ 02/ 2020

KABRECONSULTANTS
SAGAR A. KABRE
ARCHITECT , INTERIOR DESIGNER,
S-5/6 SAHAYADRI HOUSE, MICO CIRCLE
NASHIK .



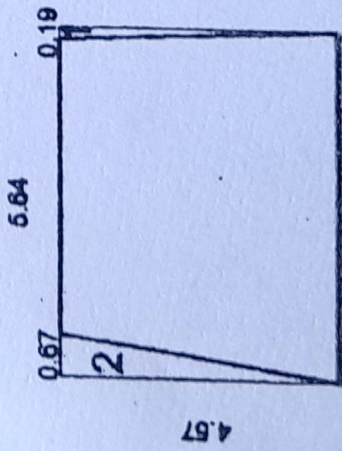
NORTH



TYPICAL FLOOR PLAN

1ST, 2ND, 3RD, 4TH, 5TH, 6TH & 7TH FLOOR

SCALE : 1:200



**BUILT-UP AREA STATEMENT:
TYPICAL FLOOR WING (C+D) LOBBY**

AREA OF BLOCK [ABCD] = $3.76 \times 3.05 = 11.47 \text{ SQ.M}$

STANDARD DEDUCTIONS :-

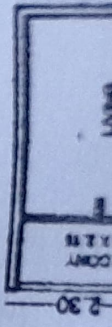
- 1. $0.13 \times 3.05 \times 0.5 = 0.20 \text{ SQ.M}$
- 2. $0.44 \times 3.05 \times 0.5 = 0.67 \text{ SQ.M}$

0.87 SQ.M

TOTAL DEDUCTIONS = 0.87 SQ.M

NET AREA = $11.47 - 0.87 = 10.6 \text{ SQ.M}$

0.19
0.50
0.15
-0.10-3.10



BUILT-UP AREA STATEMENT: TYPICAL FLOOR WING (A+B)

AREA OF BLOCK [ABCD] = 79.45 X 12.59 = 1000.27 SQ.M

STANDARD DEDUCTIONS :-

1.	2.29	X	2.20	X	4	-	20.15	SQ.M
2.	6.99	X	2.20	X	4	-	61.51	SQ.M
3.	2.40	X	3.34	X	2	-	16.03	SQ.M
4.	4.44	X	2.20	X	4	-	39.07	SQ.M
5.	1.84	X	1.50	X	1	-	2.76	SQ.M
6.	2.95	X	1.03	X	10	-	30.38	SQ.M
7.	5.65	X	1.03	X	10	-	57.63	SQ.M
8.	2.40	X	2.10	X	2	-	10.08	SQ.M
9.	1.80	X	1.50	X	1	-	2.70	SQ.M
							<u>240.31</u>	SQ.M
							<u>240.31</u>	SQ.M

TOTAL DEDUCTIONS =

NET AREA = WING A+B = 759.96 X 2

= 1519.92 SQ.M.

BUILT-UP AREA STATEMENT:
TYPICAL FLOOR WING (C+D)

AREA OF BLOCK [ABCD] = 47.22 X 12.59 = 594.50 SQ.M

STANDARD DEDUCTIONS :-

1.	2.29	X	2.20	X	4	=	20.15	SQ.M
2.	6.99	X	2.20	X	2	=	30.76	SQ.M
3.	2.40	X	3.34	X	1	=	8.01	SQ.M
4.	4.44	X	2.20	X	2	=	19.53	SQ.M
5.	1.84	X	1.50	X	1	=	2.76	SQ.M
6.	2.95	X	1.03	X	6	=	18.23	SQ.M
7.	5.65	X	1.02	X	6	=	34.57	SQ.M
8.	2.40	X	2.10	X	1	=	5.04	SQ.M
							<u>139.05</u>	SQ.M

TOTAL DEDUCTIONS -

139.05 SQ.M

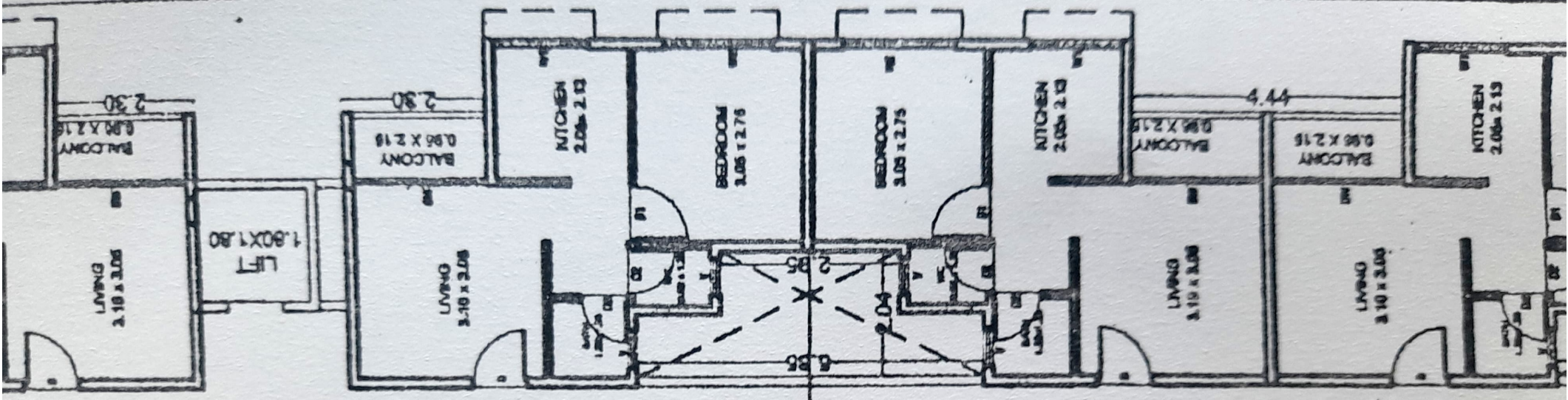
NET AREA = 594.50 - 139.05 =

455.45 SQ.M

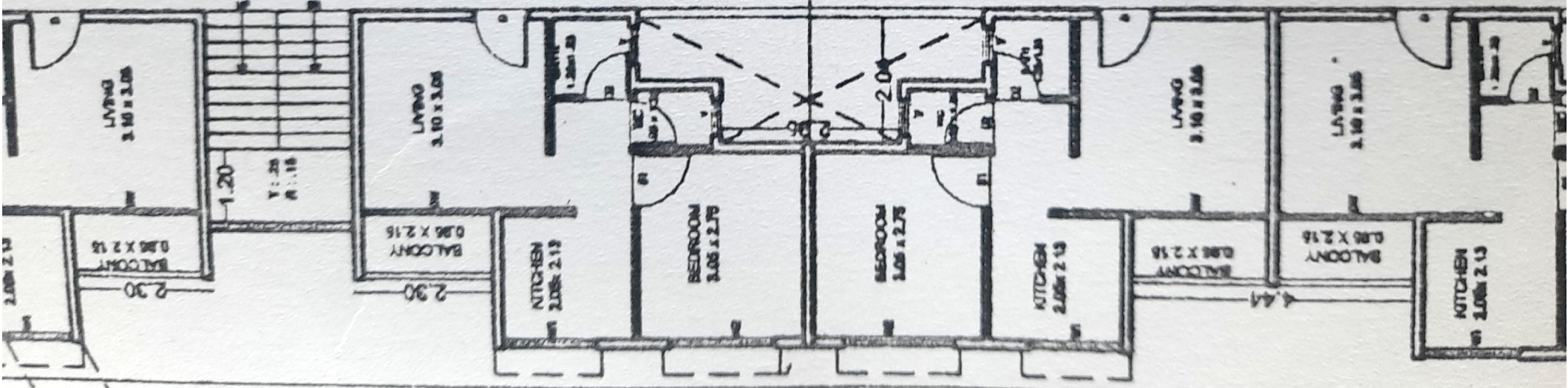
NET AREA = WING C+D = 455.45 X 2

= 910.90 SQ.M.

0.10 0.15 0.16 2.12 2.18 2.15 2.12 0.15 0.10 2.75 2.75 0.15 2.13 2.15 2.40 0.15 2.15 0.10 + 15 CM



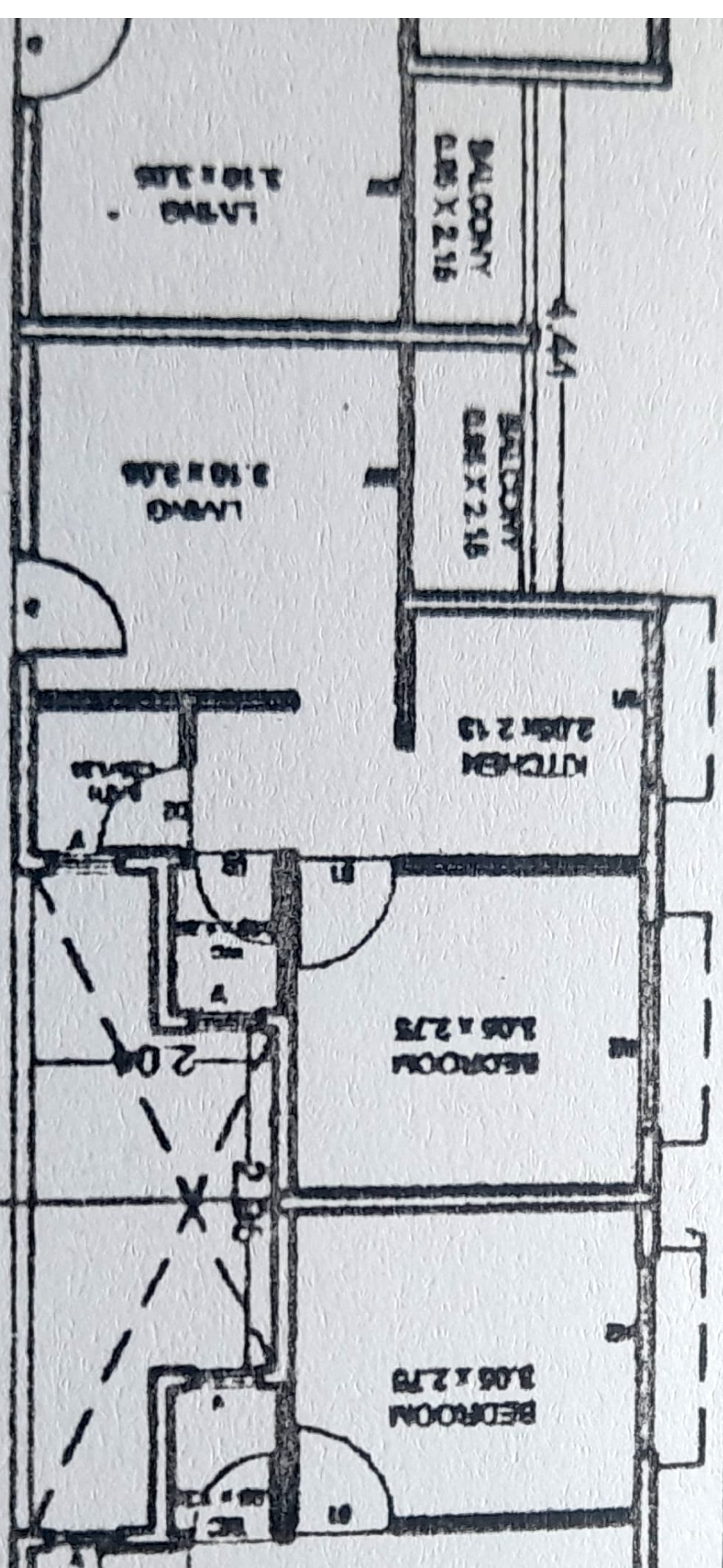
1.50M. WIDE PASSAGE
COUNT IN FSI



0.10 0.15 0.16 2.12 2.18 2.15 2.12 0.15 0.10 2.75 2.75 0.15 2.13 2.15 2.40 0.15 2.15 0.15

0.15
PASSAGE AT TOP
VERANDAH AT TOP

0.15 2.15 0.15 2.15 0.15 2.12 0.10 2.75 0.15 2.75 0.10



1.50m. WIDE F
COUNT INF