

FORM OF STATEMENT-3, S.NO. 9(G)
AREA DETAILS OF APARTMENT

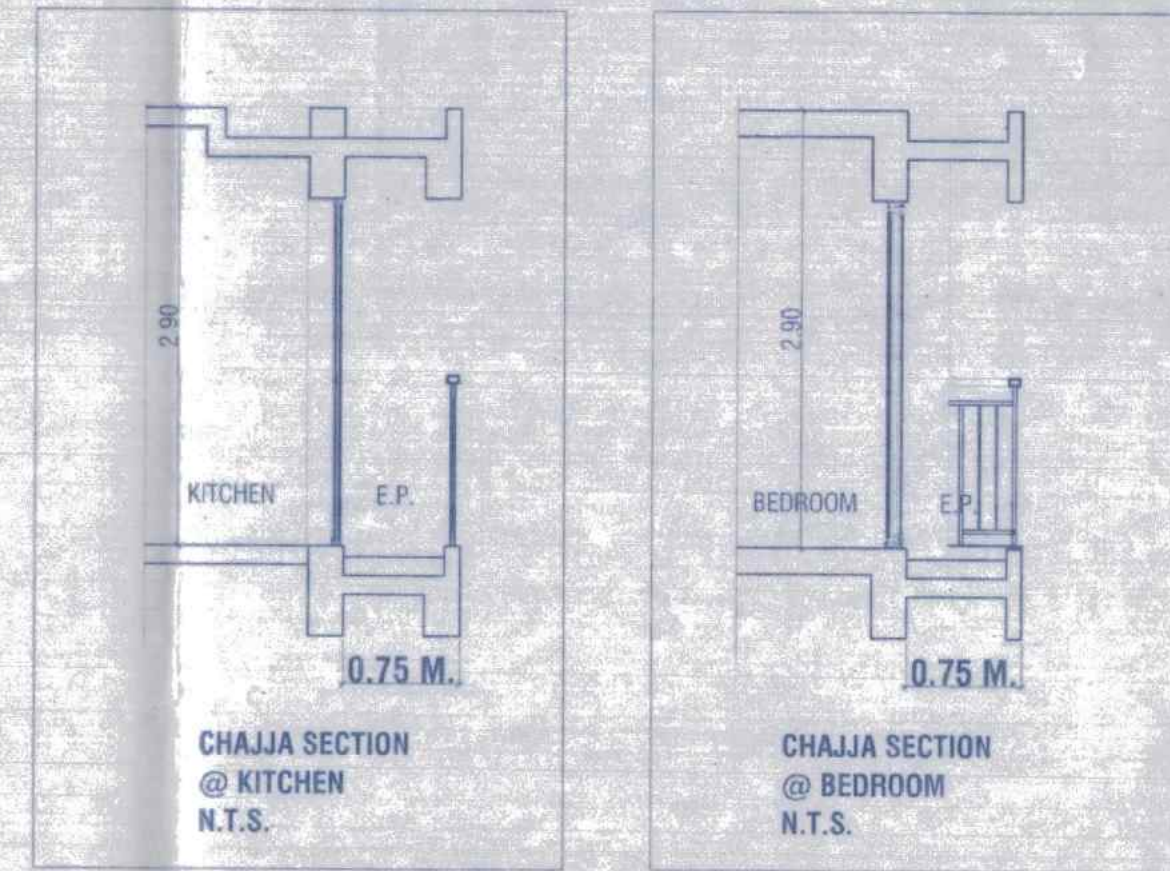
BLDG.	FLOOR	USER	NO.	AREA	RESA
D6	TYPICAL 1ST TO 6TH, 8TH TO 11TH, 13TH TO 16TH, 18TH TO 21ST, 23RD TO 26TH, 28TH TO 31ST, 33RD TO 36TH, 38TH TO 41ST, 43RD TO 46TH, 48TH TO 51ST FLOOR (BLDG. D6)	RESI.	1	64.41	64.41
			2	64.41	64.41
			3	62.67	62.67
			4	62.67	62.67
			5	62.67	62.67
			6	62.67	62.67
			7	62.67	62.67
			8	62.67	62.67
	REFUGE 7TH, 12TH, 17TH, 22ND, 27TH, 32ND, 37TH, 42ND, 47TH, & 52ND	RESI.	1	54.41	54.41
			2	64.41	64.41
			3	62.67	62.67
			4	62.67	62.67
			5	62.67	62.67
			6	62.67	62.67
			7	62.67	62.67
			8	62.67	62.67

B-UP AREA CALCULATION OF TYPICAL FLOOR
1ST TO 6TH, 8TH TO 11TH, 13TH TO 16TH, 18TH TO 21ST, 23RD TO 26TH, 28TH TO 31ST, 33RD TO 36TH, 38TH TO 41ST, 43RD TO 46TH, 48TH TO 51ST FLOOR (BLDG. D6)

NO.	AREA	RESA
A	42.96 X 31.96	1370.42
DEDUCTION		
1	3.46 X 1.50 X 0.50 X 2	5.19
2	1.95 X 3.76 X 2	12.47
3	1.95 X 0.65 X 2	2.54
4	3.50 X 3.72 X 2	26.04
5	3.94 X 1.61 X 0.50 X 2	6.34
6	3.94 X 1.79 X 0.50 X 2	7.05
7	0.90 X 5.35 X 2	9.54
8	6.70 X 2.90 X 0.50 X 2	19.43
9	5.80 X 3.70 X 2	42.92
10	0.90 X 1.83 X 2	3.21
11	1.55 X 1.39 X 2	4.31
12	1.50 X 1.16 X 2	3.48
13	0.45 X 0.58 X 2	0.52
14	1.91 X 0.83 X 0.50 X 2	1.59
15	1.95 X 0.35 X 2	1.36
16	2.00 X 0.87 X 0.50 X 2	1.74
17	5.02 X 2.17 X 0.50 X 2	10.89
18	0.78 X 1.57 X 8	9.55
19	0.82 X 2.40 X 2	3.97
20	5.39 X 2.15 X 0.50 X 2	11.69
21	5.39 X 2.48 X 0.50 X 2	13.37
22	1.84 X 0.70 X 2	2.58
23	3.77 X 1.83 X 0.50 X 2	6.85
24	0.87 X 0.39 X 2	1.41
25	11.39 X 1.35	15.38

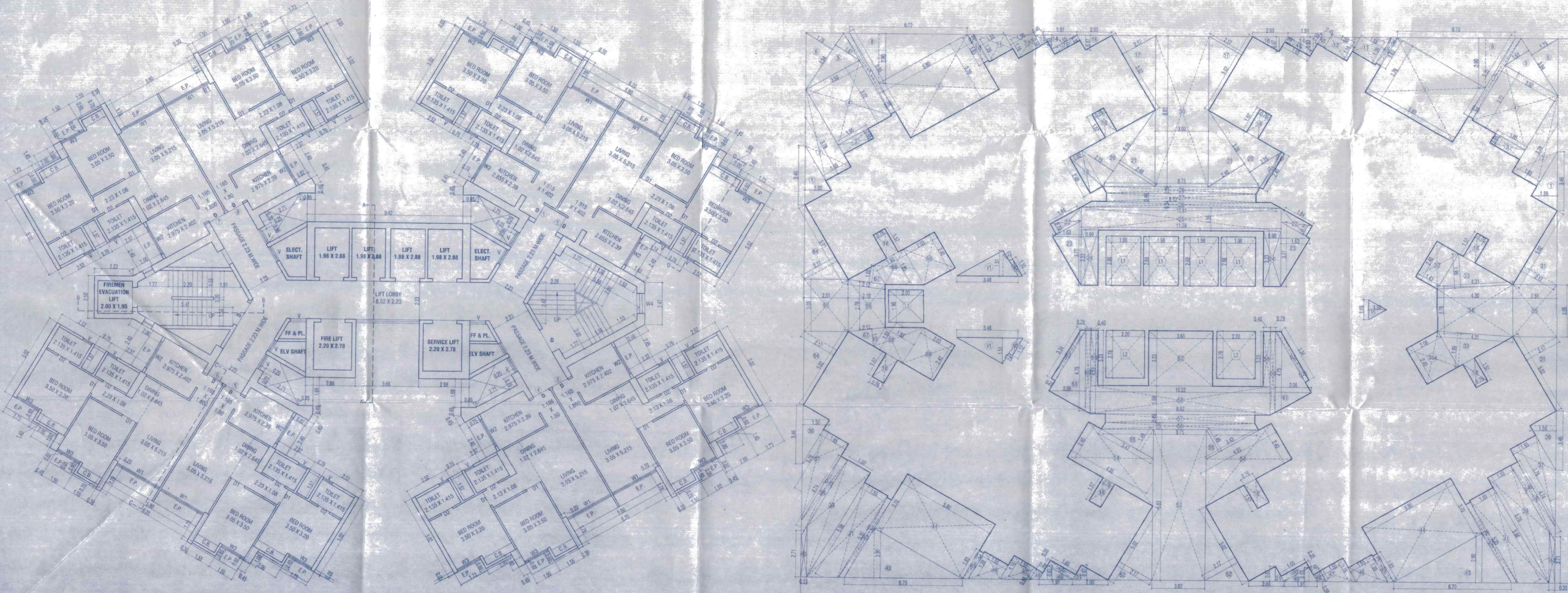
26	10.81 X 0.34	3.68
27	8.52 X 0.49	4.17
28	8.76 X 0.39	3.41
29	2.48 X 0.19	0.47
30	3.02 X 8.83	26.67
31	5.07 X 2.17 X 0.50 X 2	10.89
32	2.40 X 1.43	3.43
33	4.31 X 1.99 X 0.50 X 2	8.51
34	4.30 X 2.76	11.87
35	2.51 X 3.05	7.66
36	2.48 X 2.06	5.11
37	3.46 X 1.90 X 0.50 X 2	6.85
38	3.78 X 1.65	6.24
39	0.45 X 4.74 X 2	4.27
40	1.80 X 5.78 X 2	20.90
41	0.33 X 0.71 X 2	0.47
42	1.55 X 5.98 X 2	18.54
43	0.90 X 5.35 X 2	9.54
44	5.80 X 3.70 X 2	42.92
45	0.90 X 1.83 X 2	3.21
46	1.55 X 1.39 X 2	4.31
47	1.50 X 1.16 X 2	3.48
48	0.45 X 0.58 X 2	0.52
49	1.91 X 0.83 X 0.50 X 2	1.59
50	1.95 X 0.35 X 2	1.36
51	2.00 X 0.87 X 0.50 X 2	1.74
52	5.02 X 2.17 X 0.50 X 2	10.89
53	0.78 X 1.57 X 8	9.55
54	0.82 X 2.40 X 2	3.97
55	5.39 X 2.15 X 0.50 X 2	11.69
56	5.39 X 2.48 X 0.50 X 2	13.37
57	1.84 X 0.70 X 2	2.58
58	3.77 X 1.83 X 0.50 X 2	6.85
59	0.87 X 0.39 X 2	1.41
60	8.52 X 0.49	4.17

61	10.22 X 1.68	17.17	
62	0.40 X 3.23 X 2	2.58	
63	0.99 X 4.83 X 2	9.68	
64	1.73 X 2.96 X 0.50 X 2	5.24	
65	0.25 X 3.34 X 2	1.67	
66	3.86 X 3.23	12.48	
67	5.62 X 2.17 X 0.50 X 2	12.48	
68	2.51 X 3.05 X 2	7.66	
69	2.10 X 2.78	5.84	
70	2.12 X 1.02 X 0.50 X 2	2.16	
71	1.93 X 1.85 X 2	7.14	
72	2.03 X 2.49 X 2	10.14	
TOTAL DEDUCTION - (A)			205.00
DUCT AREA CALCULATION			
V1	3.48 X 1.51 X 0.50 X 2	5.25	
V2	0.25 X 1.12 X 2	0.56	
V3	0.22 X 1.10 X 2	0.44	
V5	1.15 X 1.00 X 0.50 X 2	1.15	
TOTAL DUCT AREA - (B)			7.40
LIFT AREA CALCULATION			
L1	1.98 X 2.88 X 4	22.81	
L2	2.20 X 2.78 X 2	12.23	
L3	2.00 X 1.90 X 2	7.60	
TOTAL LIFT AREA - (C)			42.64
TOTAL (A+B+C)			650.20
TOTAL PROPOSED BUA AREA OF TYPICAL FLOOR			725.17
BUA AREA PER POLYLINE			719.83



FORM OF STATEMENT-2, S.NO. 9(A), PROPOSED BUILDING

BUILDING	FLOOR	TOTAL BUILT-UP AREA OF FLOORS AS PER OUTER CONSTRUCTION LINE					HEIGHT	TENEMENT
		RESIDENTIAL	REFUGE AREA	PERM	PROP. REFUGE AREA	EXCESS REFUGE AREA		
B4	172.04						172.04	
B5	172.04						172.04	
B6	172.04						172.04	
B7	169.02						169.02	
GROUND	298.37						298.37	
PODIUM	703.66						703.66	
1	719.93						719.93	
2	719.93						719.93	
3	719.93						719.93	
4	719.93						719.93	
5	719.93						719.93	
6	719.93						719.93	
7	650.20	33.00	66.00	69.73	3.73	653.93	2.90	
8	719.93					719.93	2.90	
9	719.93					719.93	2.90	
10	719.93					719.93	2.90	
11	719.93					719.93	2.90	
12	650.20	33.00	66.00	69.73	3.73	653.93	2.90	
13	719.93					719.93	2.90	
14	719.93					719.93	2.90	
15	719.93					719.93	2.90	
16	719.93					719.93	2.90	
17	650.20	33.00	66.00	69.73	3.73	653.93	2.90	
18	719.93					719.93	2.90	
19	719.93					719.93	2.90	
20	719.93					719.93	2.90	
21	719.93					719.93	2.90	
22	650.20	33.00	66.00	69.73	3.73	653.93	2.90	
23	719.93					719.93	2.90	
24	719.93					719.93	2.90	
25	719.93					719.93	2.90	
26	719.93					719.93	2.90	
27	650.20	33.00	66.00	69.73	3.73	653.93	2.90	
28	719.93					719.93	2.90	
29	719.93					719.93	2.90	
30	719.93					719.93	2.90	
31	719.93					719.93	2.90	
32	650.20	33.00	66.00	69.73	3.73	653.93	2.90	
33	719.93					719.93	2.90	
34	719.93					719.93	2.90	
35	719.93					719.93	2.90	
36	719.93					719.93	2.90	
37	650.20	33.00	66.00	69.73	3.73	653.93	2.90	
38	719.93					719.93	2.90	
39	719.93					719.93	2.90	
40	719.93					719.93	2.90	
41	719.93					719.93	2.90	
42	650.20	33.00	66.00	69.73	3.73	653.93	2.90	
43	719.93					719.93	2.90	
44	719.93					719.93	2.90	
45	719.93					719.93	2.90	
46	719.93					719.93	2.90	
47	650.20	33.00	66.00	69.73	3.73	653.93	2.90	
48	719.93					719.93	2.90	
49	719.93					719.93	2.90	
50	719.93					719.93	2.90	
51	719.93					719.93	2.90	
52	650.20	33.00	66.00	69.73	3.73	653.93	2.90	
TOTAL	38456.25	330.00	660.00	697.30	37.30	38493.30	400	



AREA LINE DIAGRAM (1ST TO 6TH, 8TH TO 11TH, 13TH TO 16TH, 18TH TO 21ST, 23RD TO 26TH, 28TH TO 31ST, 33RD TO 36TH, 38TH TO 41ST, 43RD TO 46TH, 48TH TO 51ST FLOOR) (BLDG. D6) (SCALE 1:100)

TYPICAL FLOOR PLAN (1ST TO 6TH, 8TH TO 11TH, 13TH TO 16TH, 18TH TO 21ST, 23RD TO 26TH, 28TH TO 31ST, 33RD TO 36TH, 38TH TO 41ST, 43RD TO 46TH, 48TH TO 51ST FLOOR) (BLDG. D6) (SCALE 1:100)

BUILDING- D6
BASEMENT 4TH + BASEMENT 3RD + BASEMENT 2ND + BASEMENT 1ST + GROUND + PODIUM + 1ST TO 52ND FLOOR

CONTENT OF SHEET
TYPICAL FLOOR PLAN WITH AREA LINE DIAGRAM, CALCULATION & BUA SUMMARY ETC.

STAMP OF APPROVAL OF PLANS :
Plans are approved Subject to conditions Prescribed in Permit No. 19, 4526/1, 0270/11, TMC/TP-D/17/14302/2020, Dated: 21/11/2023

Deputy Engineer (TDC) Thane Municipal Corporation, The City of Thane.

DOOR WINDOW SCHEDULE

TYPE	SIZE	DESCRIPTION
D	1.05 X 2.10	T.W. FRAMED WITH PANNELED DOOR
D1	0.90 X 2.10	T.W. FRAMED WITH PANNELED DOOR
D2	0.75 X 3.00	T.W. FRAMED WITH PANNELED DOOR
W1	2.00 X 1.50	T.W. FRAMED WITH GLAZE WINDOW
W2	1.85 X 1.50	T.W. FRAMED WITH GLAZE WINDOW
W3	1.50 X 1.50	T.W. FRAMED WITH GLAZE WINDOW
W4	1.15 X 1.50	T.W. FRAMED WITH GLAZE WINDOW
V	0.60 X 0.90	T.W. FRAMED WITH LOUVERS

DESCRIPTION OF PROPOSAL
PROPOSED RESIDENTIAL & COMMERCIAL DEVELOPMENT ON S NO. - S.NO. 163/5 TO 98/1, 163/5 TO 88/2, 163/9A/1, 163/9A/2, 163/1A, 163/2A, 166/8A, 166/7A, 166/8A, 166/9A/PT.1, 166/10A/1, 166/10A/2, 166/11A, 166/12A, 166/13A, 166/14A/1, 166/14A/2, 166/15A/1, 166/15A/2, 166/16A, 166/22A/1, 166/22A/2, 166/24A/1, 166/24A/2, 166/24A/3, 166/24A/4, 166/24A/5, 166/24A/6, 166/24A/7, 166/24A/8, 166/24A/9, 166/24A/10, 166/24A/11, 166/24A/12, 166/24A/13, 166/24A/14, 166/24A/15, 166/24A/16, 166/24A/17, 166/24A/18, 166/24A/19, 166/24A/20, 166/24A/21, 166/24A/22, 166/24A/23, 166/24A/24, 166/24A/25, 166/24A/26, 166/24A/27, 166/24A/28, 166/24A/29, 166/24A/30, 166/24A/31, 166/24A/32, 166/24A/33, 166/24A/34, 166/24A/35, 166/24A/36, 166/24A/37, 166/24A/38, 166/24A/39, 166/24A/40, 166/24A/41, 166/24A/42, 166/24A/43, 166/24A/44, 166/24A/45, 166/24A/46, 166/24A/47, 166/24A/48, 166/24A/49, 166/24A/50, 166/24A/51, 166/24A/52, 166/24A/53, 166/24A/54, 166/24A/55, 166/24A/56, 166/24A/57, 166/24A/58, 166/24A/59, 166/24A/60, 166/24A/61, 166/24A/62, 166/24A/63, 166/24A/64, 166/24A/65, 166/24A/66, 166/24A/67, 166/24A/68, 166/24A/69, 166/24A/70, 166/24A/71, 166/24A/72, 166/24A/73, 166/24A/74, 166/24A/75, 166/24A/76, 166/24A/77, 166/24A/78, 166/24A/79, 166/24A/80, 166/24A/81, 166/24A/82, 166/24A/83, 166/24A/84, 166/24A/85, 166/24A/86, 166/24A/87, 166/24A/88, 166/24A/89, 166/24A/90, 166/24A/91, 166/24A/92, 166/24A/93, 166/24A/94, 166/24A/95, 166/24A/96, 166/24A/97, 166/24A/98, 166/24A/99, 166/24A/100, 166/24A/101, 166/24A/102, 166/24A/103, 166/24A/104, 166/24A/105, 166/24A/106, 166/24A/107, 166/24A/108, 166/24A/109, 166/24A/110, 166/24A/111, 166/24A/112, 166/24A/113, 166/24A/114, 166/24A/115, 166/24A/116, 166/24A/117, 166/24A/118, 166/24A/119, 166/24A/120, 166/24A/121, 166/24A/122, 166/24A/123, 166/24A/124, 166/24A/125, 166/24A/126, 166/24A/127, 166/24A/128, 166/24A/129, 166/24A/130, 166/24A/131, 166/24A/132, 166/24A/133, 166/24A/134, 166/24A/135, 166/24A/136, 166/24A/137, 166/24A/138, 166/24A/139, 166/24A/140, 166/24A/141, 166/24A/142, 166/24A/143, 166/24A/144, 166/24A/145, 166/24A/146, 166/24A/147, 166/24A/148, 166/24A/149, 166/24A/150, 166/24A/151, 166/24A/152, 166/24A/153, 166/24A/154, 166/24A/155, 166/24A/156, 166/24A/157, 166/24A/158, 166/24A/159, 166/24A/160, 166/24A/161, 166/24A/162, 166/24A/163, 166/24A/164, 166/24A/165, 166/24A/166, 166/24A/167, 166/24A/168, 166/24A/169, 166/24A/170, 166/24A/171, 166/24A/172, 166/24A/173, 166/24A/174, 166/24A/175, 166/24A/176, 166/24A/177, 166/24A/178, 166/2