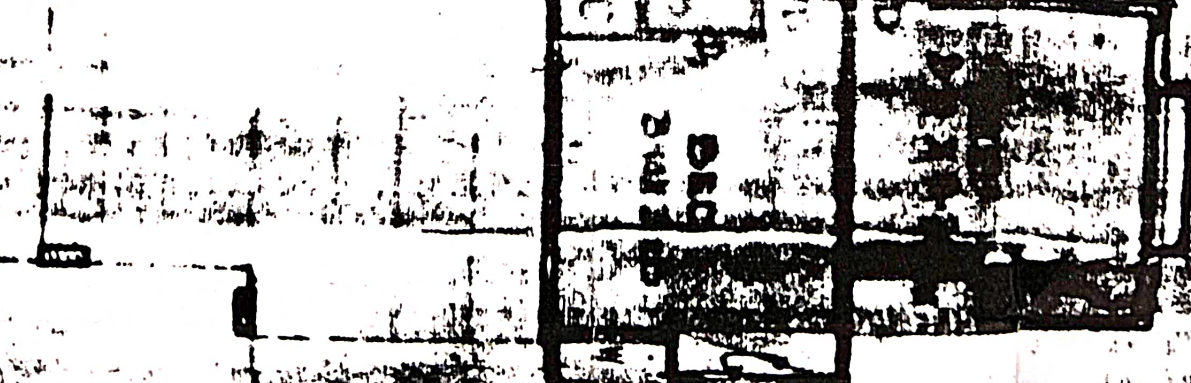
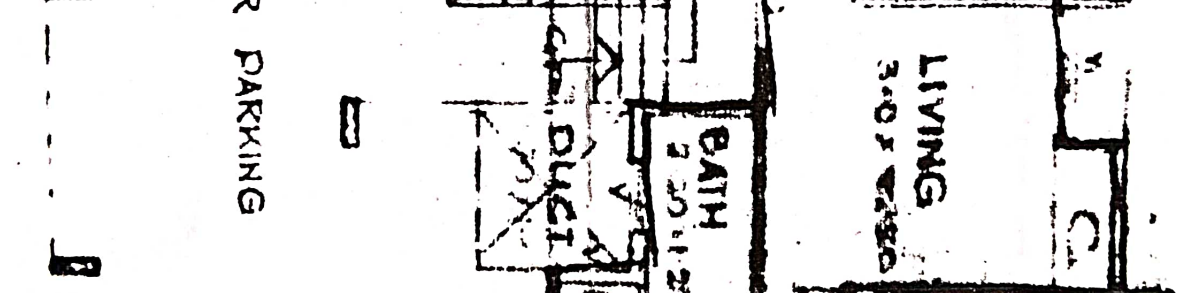
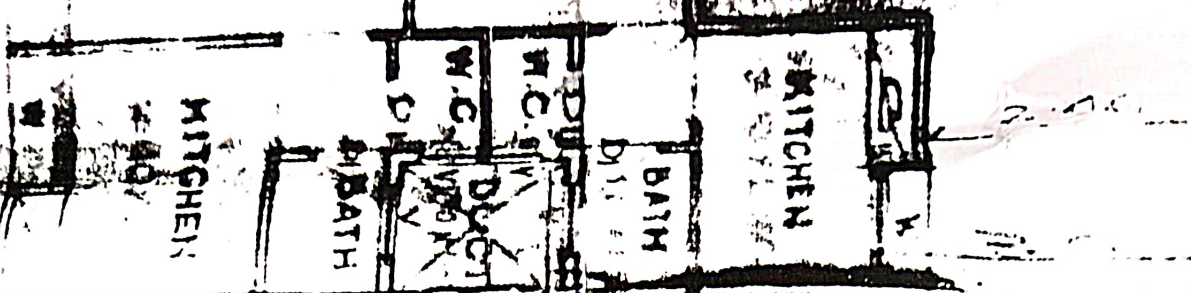
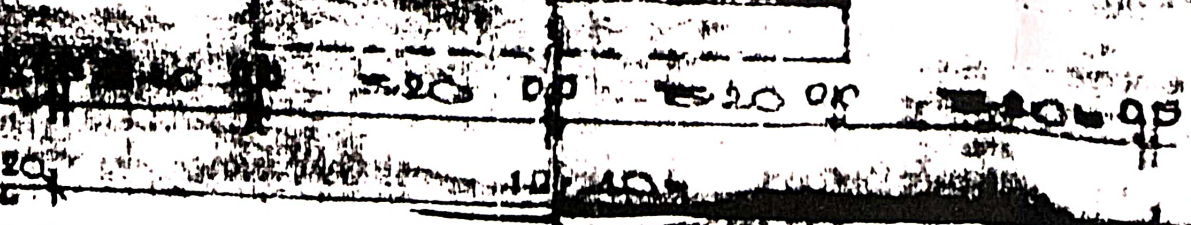


ING



STILL FOR PARKING



APPROVED

THE PLANS AND THE CONDITIONS MENTIONED IN THE ACCOMPANYING COMMENCEMENT CERTIFICATE NO 1313 DATED 14/8/1913

EDUCATIVE ENGINEER
TOWN PLANNING
MNC NASHIK

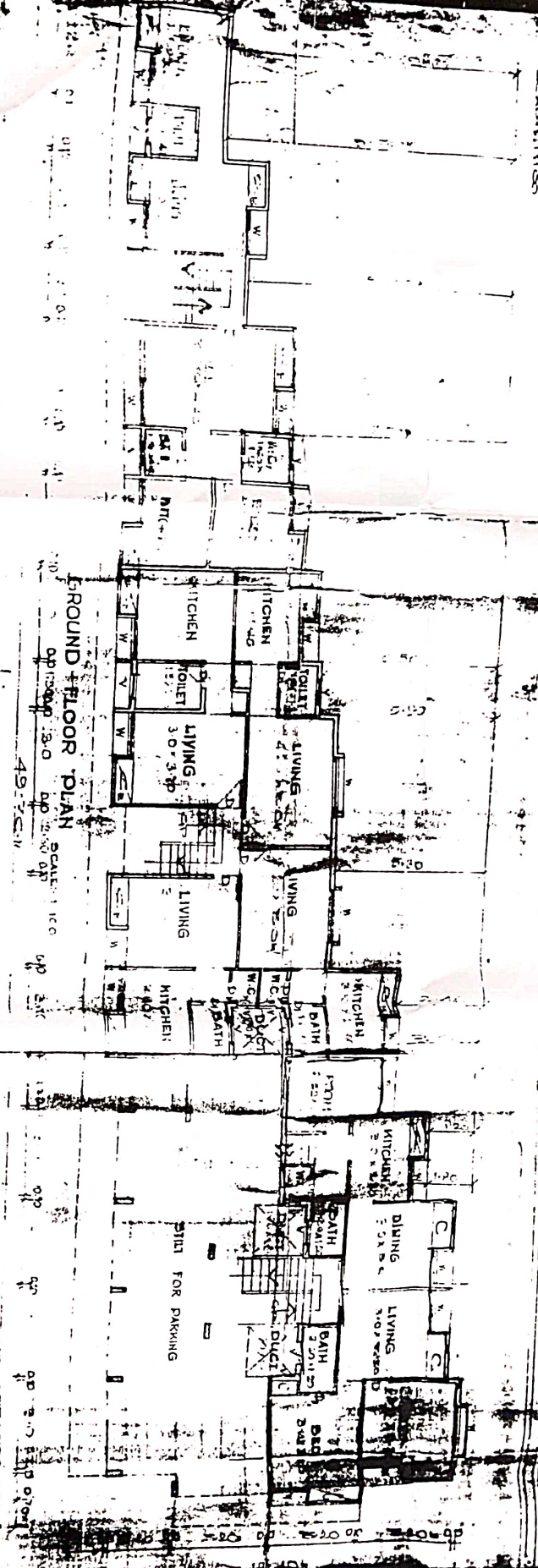
APPROVED

AS PER THE CONDITIONS MENTIONED IN THE ACCOMPANYING COMMENCEMENT CERTIFICATE NO 429 DATED 10/6/1913

EDUCATIVE ENGINEER
TOWN PLANNING
MASHHUR MUNICIPAL CORPORATION NASHIK



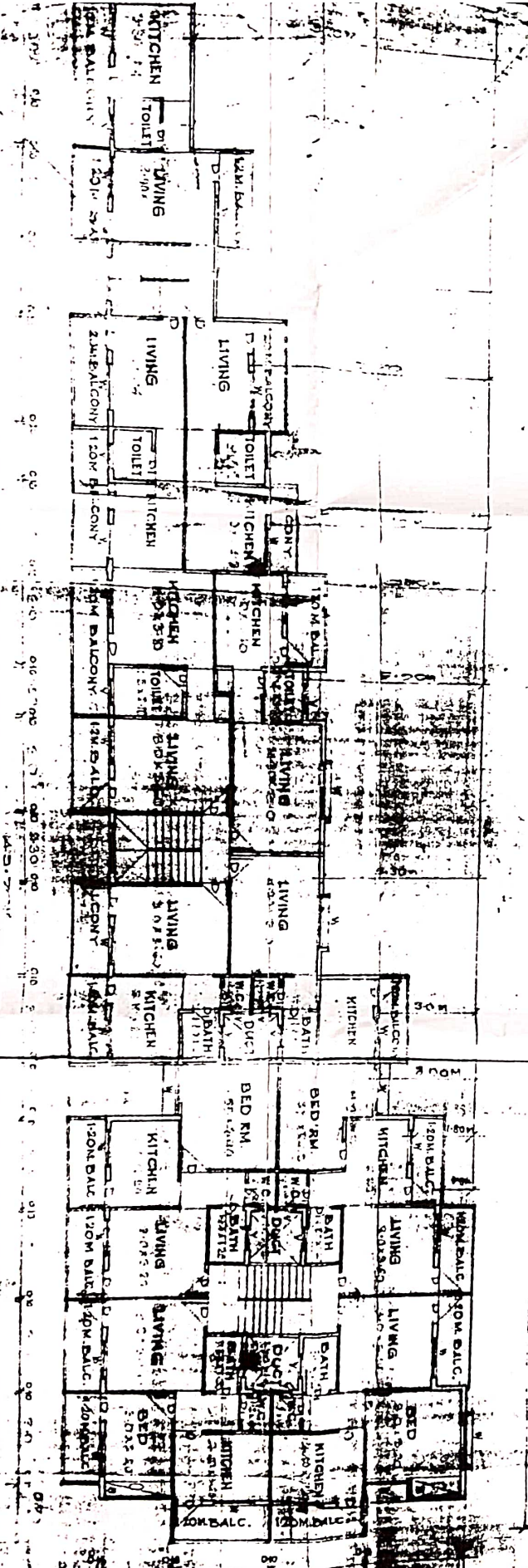
FRONT ELEVATION



GROUND FLOOR PLAN SCALE: 1/8" = 1'-0"

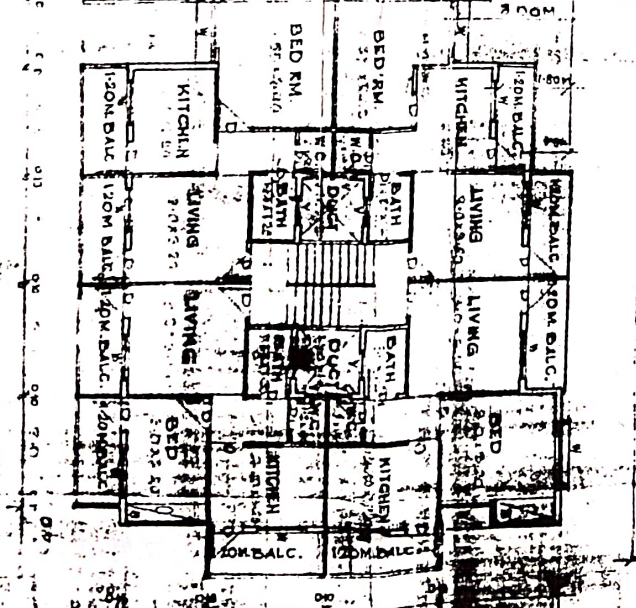
FIRST FLOOR PLAN SCALE: 1/8" = 1'-0"

SECOND FLOOR PLAN SCALE: 1/8" = 1'-0"



NOTE: ALL STAIRS SHOWN ARE NOT TO SCALE. SEE GENERAL NOTES FOR STAIR DETAILS.

THIRD FLOOR PLAN SCALE: 1/8" = 1'-0"

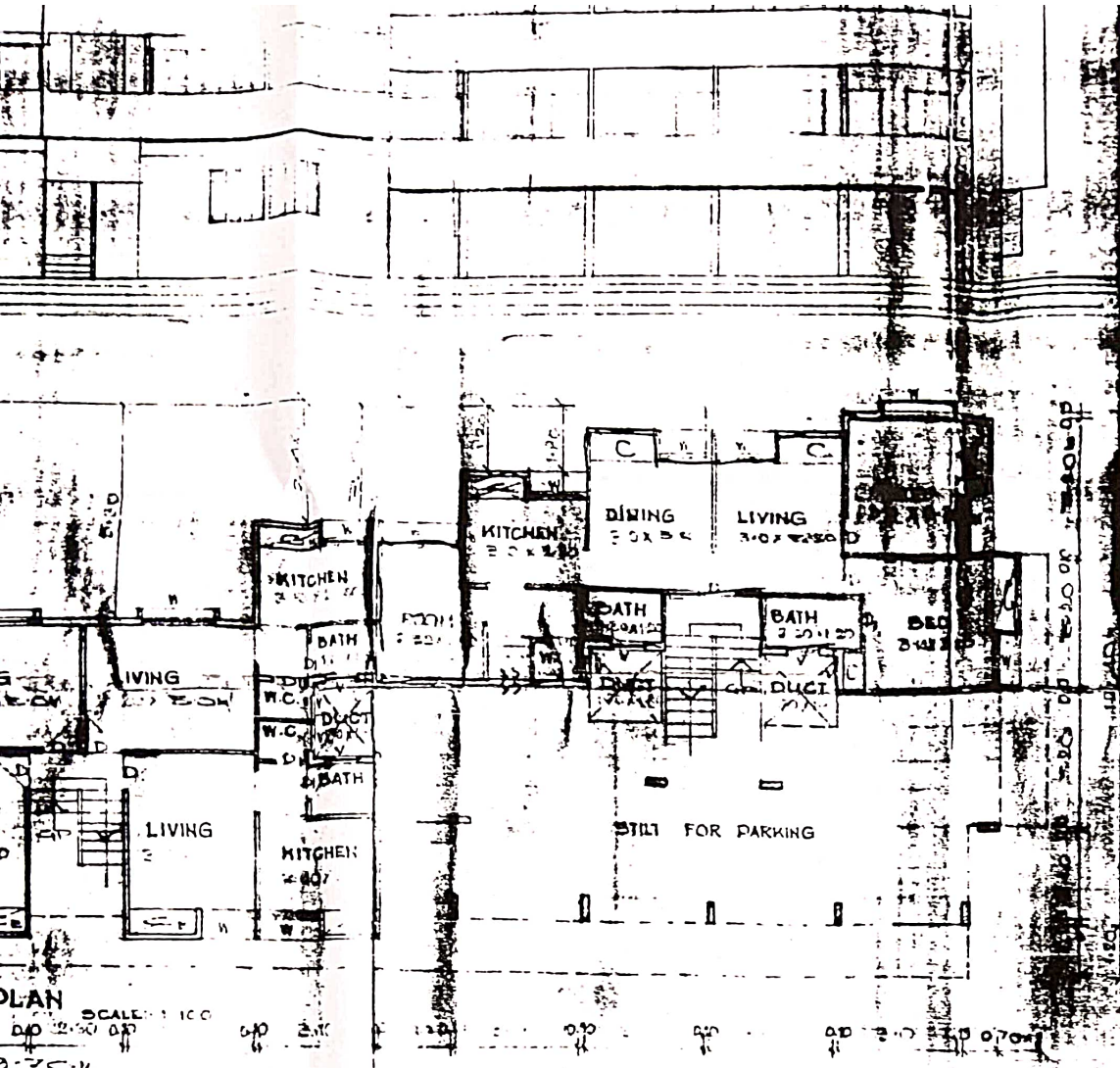


SECTION @ X-X

SECTION @ Y-Y



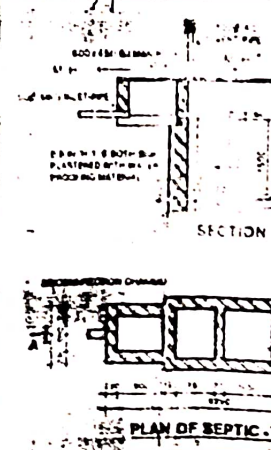
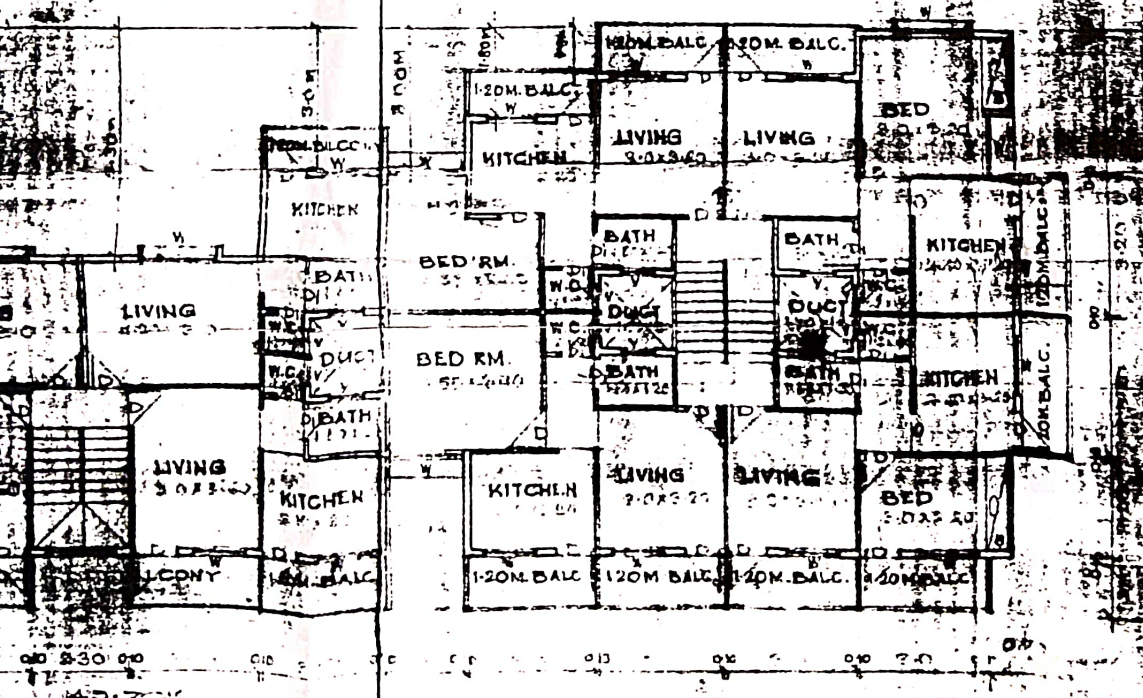
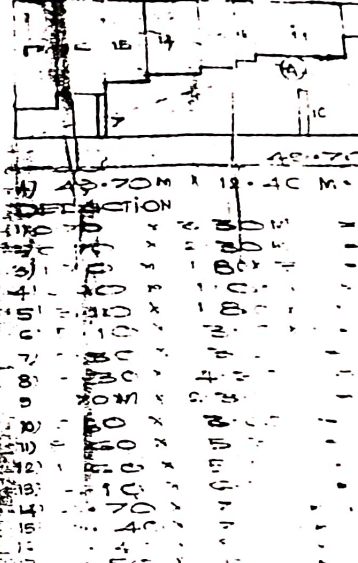
DETAILS



PLAN SCALE: 1:100
 DP 2-20/00 DP 2-20/00

SECTION @ X X I
 1:100

AREA DIAGRAM / CALCULATION
 TOTAL FLOOR

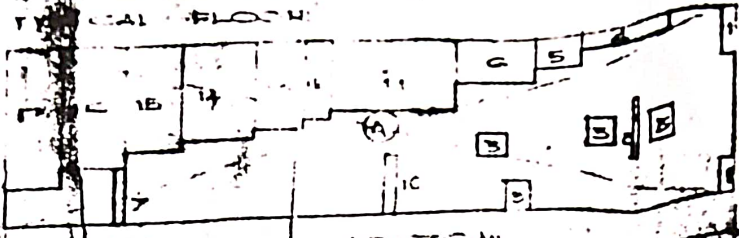


NOT MORE THAN 1:100

PLAN OF SEPTIC

SECTION @ X X I
SCALE: 1:10

AREA DIAGRAM / CALCULATION

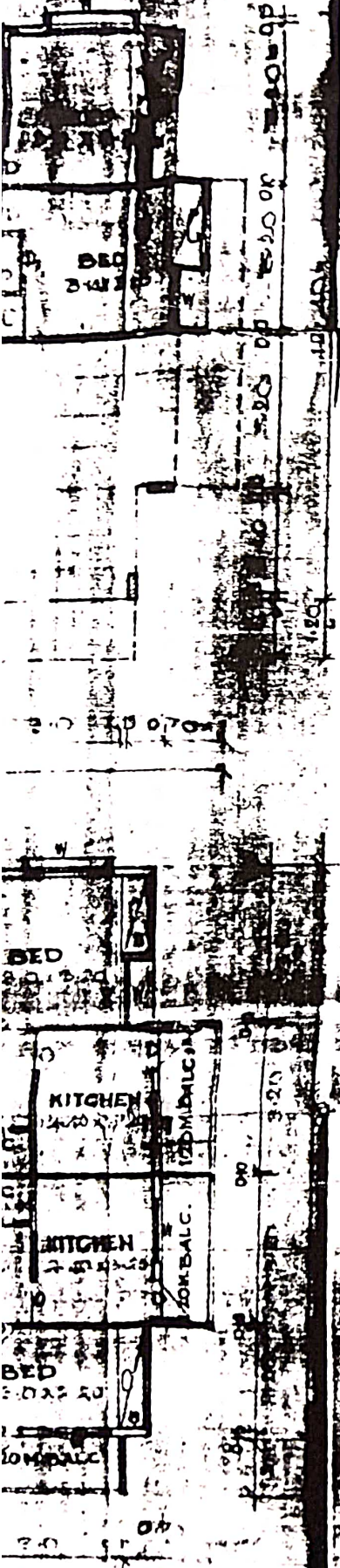
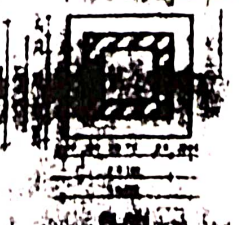
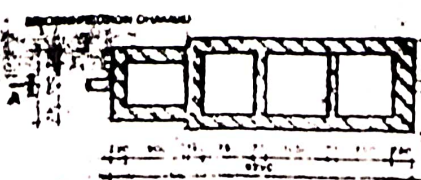
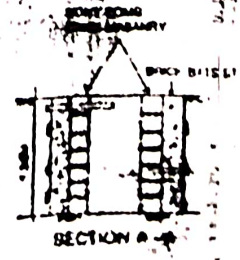
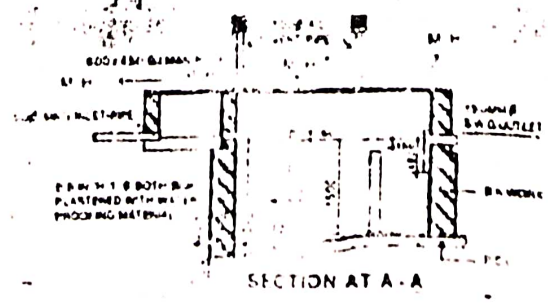
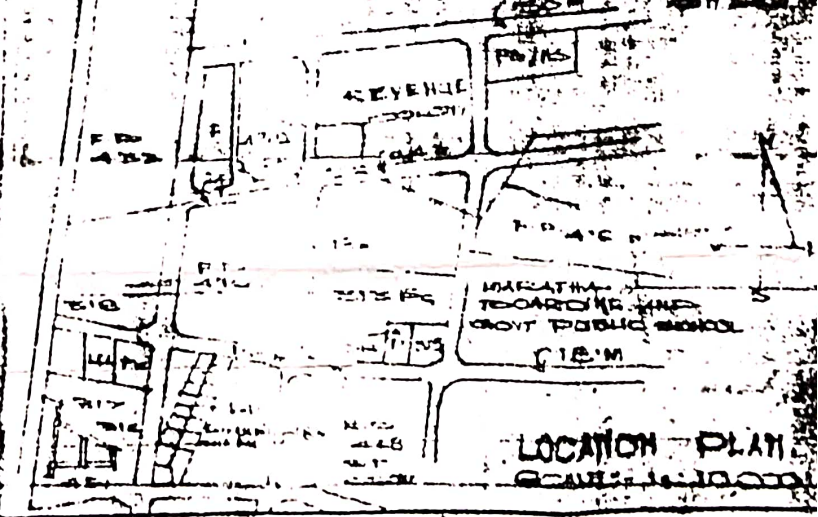


40.70M x 12.40M = 504.28 M²

DEFINITION

1	2	3	4	5	6	7	8	9	10
2.31 M ²	1.61 M ²	3.18 M ²	6.50 M ²	1.58 M ²	1.20 M ²	1.28 M ²	1.08 M ²	45.35 M ²	9.24 M ²
20.18 M ²	32.57 M ²	20.15 M ²	32.57 M ²	20.15 M ²	32.57 M ²	20.15 M ²	32.57 M ²	20.15 M ²	32.57 M ²
45.35 M ²	9.24 M ²	20.18 M ²	32.57 M ²	20.15 M ²	32.57 M ²	20.15 M ²	32.57 M ²	20.15 M ²	32.57 M ²

273.85 M²
342.43 M²
TOTAL UP AREA = 273.85 M²



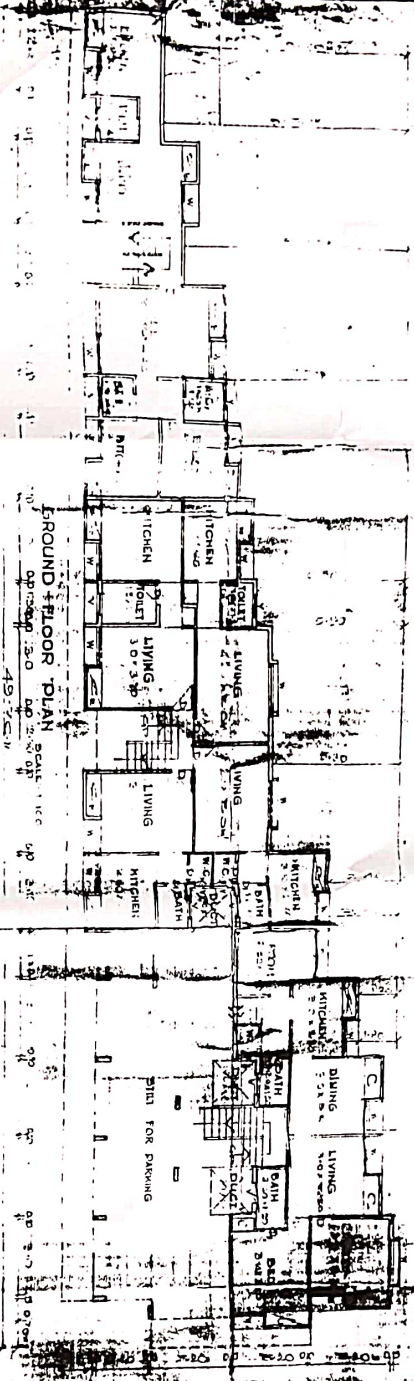
APPROVED
 AS SHOWN IN CONNECTION WITH THE
 OCCUPANCY PERMITS FOR THE
 PROJECT NO. 1518 DATED 10/10/58
 BY THE BOARD OF HEALTH
 CITY OF BOSTON

PROJECT ENGINEER
 JOHN J. HANCOCK
 ARCHITECT
 100 STATE STREET
 BOSTON, MASS.

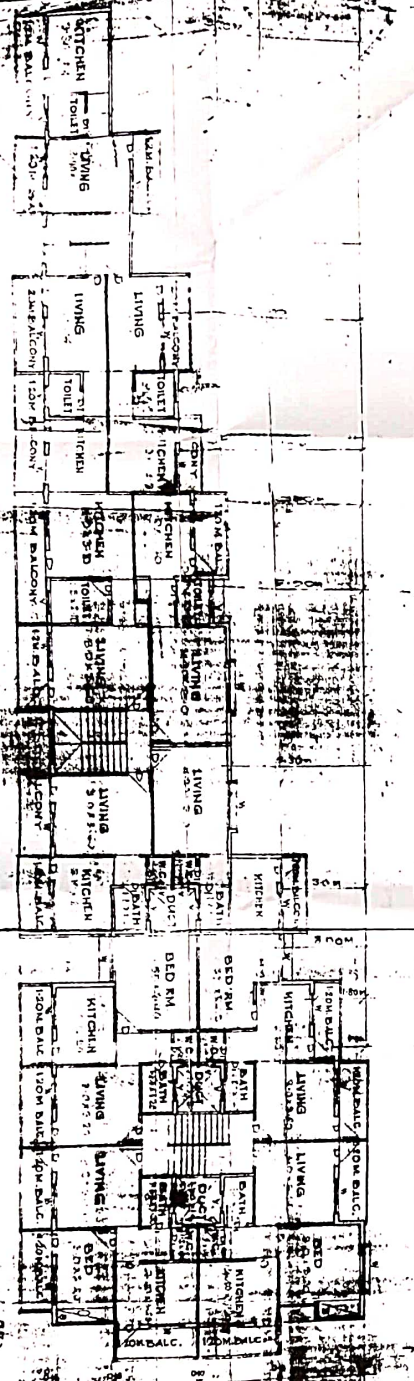
FRONT ELEVATION



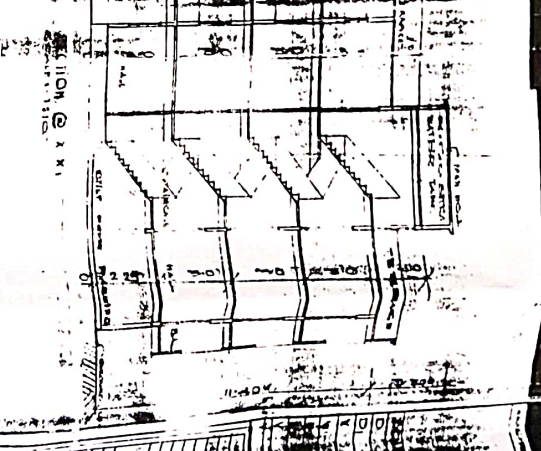
GROUND FLOOR PLAN



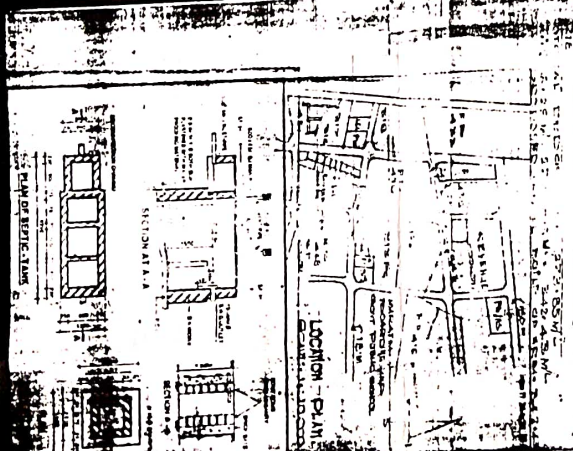
FIRST FLOOR PLAN



AREA DIAGRAM CALCULATION



LOCATION PLAN

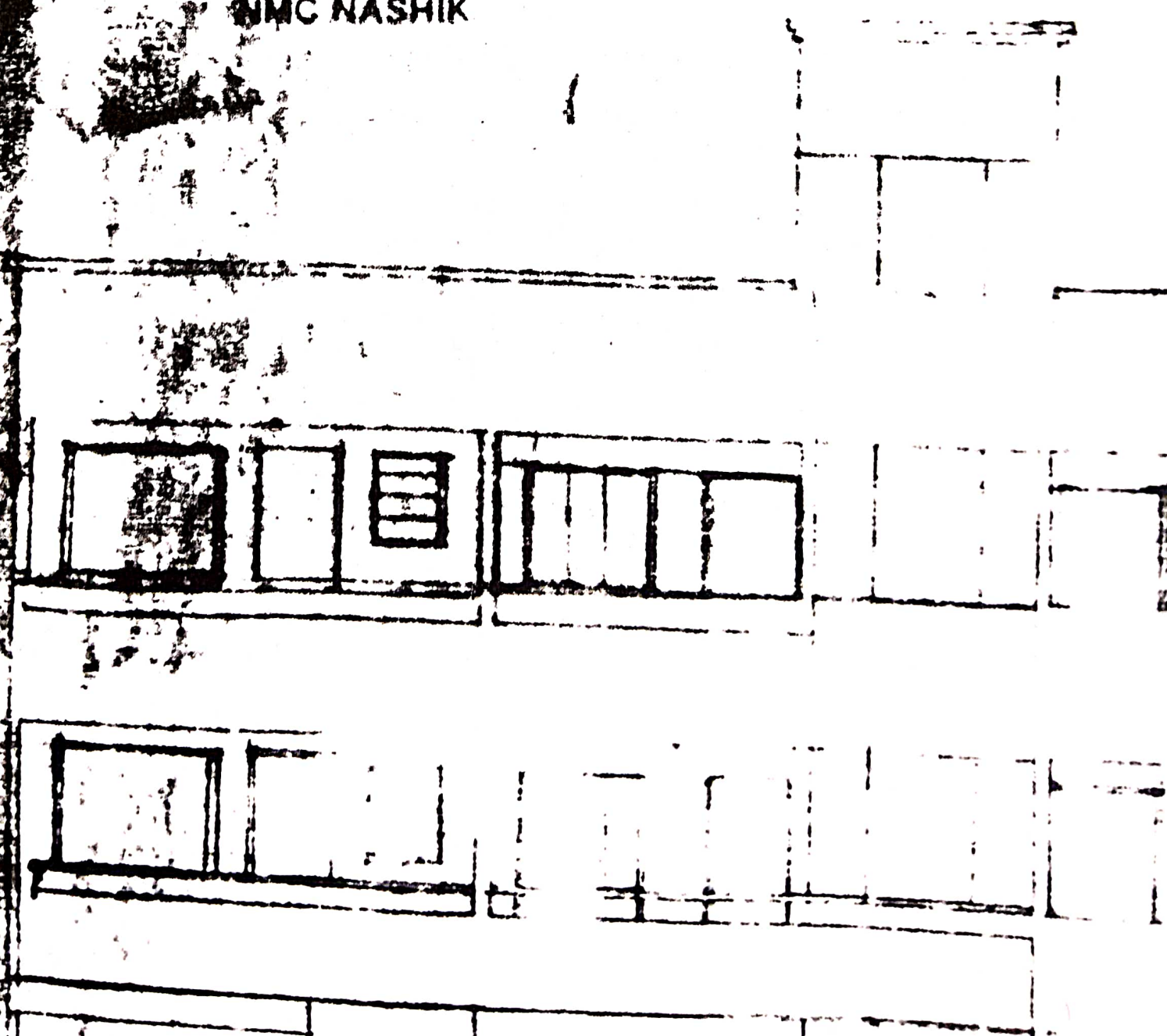


NO.	DESCRIPTION	DATE	BY
1	PRELIMINARY PLAN	10/10/58	J.J.H.
2	REVISED PLAN	10/10/58	J.J.H.
3	REVISED PLAN	10/10/58	J.J.H.
4	REVISED PLAN	10/10/58	J.J.H.
5	REVISED PLAN	10/10/58	J.J.H.
6	REVISED PLAN	10/10/58	J.J.H.
7	REVISED PLAN	10/10/58	J.J.H.
8	REVISED PLAN	10/10/58	J.J.H.
9	REVISED PLAN	10/10/58	J.J.H.
10	REVISED PLAN	10/10/58	J.J.H.
11	REVISED PLAN	10/10/58	J.J.H.
12	REVISED PLAN	10/10/58	J.J.H.
13	REVISED PLAN	10/10/58	J.J.H.
14	REVISED PLAN	10/10/58	J.J.H.
15	REVISED PLAN	10/10/58	J.J.H.
16	REVISED PLAN	10/10/58	J.J.H.
17	REVISED PLAN	10/10/58	J.J.H.
18	REVISED PLAN	10/10/58	J.J.H.
19	REVISED PLAN	10/10/58	J.J.H.
20	REVISED PLAN	10/10/58	J.J.H.
21	REVISED PLAN	10/10/58	J.J.H.
22	REVISED PLAN	10/10/58	J.J.H.
23	REVISED PLAN	10/10/58	J.J.H.
24	REVISED PLAN	10/10/58	J.J.H.
25	REVISED PLAN	10/10/58	J.J.H.
26	REVISED PLAN	10/10/58	J.J.H.
27	REVISED PLAN	10/10/58	J.J.H.
28	REVISED PLAN	10/10/58	J.J.H.
29	REVISED PLAN	10/10/58	J.J.H.
30	REVISED PLAN	10/10/58	J.J.H.
31	REVISED PLAN	10/10/58	J.J.H.
32	REVISED PLAN	10/10/58	J.J.H.
33	REVISED PLAN	10/10/58	J.J.H.
34	REVISED PLAN	10/10/58	J.J.H.
35	REVISED PLAN	10/10/58	J.J.H.
36	REVISED PLAN	10/10/58	J.J.H.
37	REVISED PLAN	10/10/58	J.J.H.
38	REVISED PLAN	10/10/58	J.J.H.
39	REVISED PLAN	10/10/58	J.J.H.
40	REVISED PLAN	10/10/58	J.J.H.
41	REVISED PLAN	10/10/58	J.J.H.
42	REVISED PLAN	10/10/58	J.J.H.
43	REVISED PLAN	10/10/58	J.J.H.
44	REVISED PLAN	10/10/58	J.J.H.
45	REVISED PLAN	10/10/58	J.J.H.
46	REVISED PLAN	10/10/58	J.J.H.
47	REVISED PLAN	10/10/58	J.J.H.
48	REVISED PLAN	10/10/58	J.J.H.
49	REVISED PLAN	10/10/58	J.J.H.
50	REVISED PLAN	10/10/58	J.J.H.
51	REVISED PLAN	10/10/58	J.J.H.
52	REVISED PLAN	10/10/58	J.J.H.
53	REVISED PLAN	10/10/58	J.J.H.
54	REVISED PLAN	10/10/58	J.J.H.
55	REVISED PLAN	10/10/58	J.J.H.
56	REVISED PLAN	10/10/58	J.J.H.
57	REVISED PLAN	10/10/58	J.J.H.
58	REVISED PLAN	10/10/58	J.J.H.
59	REVISED PLAN	10/10/58	J.J.H.
60	REVISED PLAN	10/10/58	J.J.H.
61	REVISED PLAN	10/10/58	J.J.H.
62	REVISED PLAN	10/10/58	J.J.H.
63	REVISED PLAN	10/10/58	J.J.H.
64	REVISED PLAN	10/10/58	J.J.H.
65	REVISED PLAN	10/10/58	J.J.H.
66	REVISED PLAN	10/10/58	J.J.H.
67	REVISED PLAN	10/10/58	J.J.H.
68	REVISED PLAN	10/10/58	J.J.H.
69	REVISED PLAN	10/10/58	J.J.H.
70	REVISED PLAN	10/10/58	J.J.H.
71	REVISED PLAN	10/10/58	J.J.H.
72	REVISED PLAN	10/10/58	J.J.H.
73	REVISED PLAN	10/10/58	J.J.H.
74	REVISED PLAN	10/10/58	J.J.H.
75	REVISED PLAN	10/10/58	J.J.H.
76	REVISED PLAN	10/10/58	J.J.H.
77	REVISED PLAN	10/10/58	J.J.H.
78	REVISED PLAN	10/10/58	J.J.H.
79	REVISED PLAN	10/10/58	J.J.H.
80	REVISED PLAN	10/10/58	J.J.H.
81	REVISED PLAN	10/10/58	J.J.H.
82	REVISED PLAN	10/10/58	J.J.H.
83	REVISED PLAN	10/10/58	J.J.H.
84	REVISED PLAN	10/10/58	J.J.H.
85	REVISED PLAN	10/10/58	J.J.H.
86	REVISED PLAN	10/10/58	J.J.H.
87	REVISED PLAN	10/10/58	J.J.H.
88	REVISED PLAN	10/10/58	J.J.H.
89	REVISED PLAN	10/10/58	J.J.H.
90	REVISED PLAN	10/10/58	J.J.H.
91	REVISED PLAN	10/10/58	J.J.H.
92	REVISED PLAN	10/10/58	J.J.H.
93	REVISED PLAN	10/10/58	J.J.H.
94	REVISED PLAN	10/10/58	J.J.H.
95	REVISED PLAN	10/10/58	J.J.H.
96	REVISED PLAN	10/10/58	J.J.H.
97	REVISED PLAN	10/10/58	J.J.H.
98	REVISED PLAN	10/10/58	J.J.H.
99	REVISED PLAN	10/10/58	J.J.H.
100	REVISED PLAN	10/10/58	J.J.H.

APPROVED

(THE PLANS AMENDED IN
AS PER THE CONDITIONS MENTIONED IN
THE ACCOMPANING COMMENCEMENT
CERTIFICATE NO 1313 DATED 14/8/1973

SD - XXX
EXECUTIVE ENGINEER
TOWN PLANNING
NMC NASHIK



APPROVED

[PLAN AMENDED IN----]
AS PER THE CONDITIONS MENTIONED
IN THE ACCOMPANYING COMMENCEMENT
CERTIFICATE NO 429 DATED 10/6/1997.

Sd/-

EXECUTIVE ENGINEER
TOWN PLANNING

NASHIK MUNICIPAL CORPORATION NASHIK

