



Think.Innovate.Create

VALUATION REPORT OF PLANT & MACHINERY

Name of Owner: M/s. Sadhana Nitro Chem Limited

Details of the property under consideration:

Plant & Machinery on Plot No. 47, MIDC Industrial Area, Dhatav, Roha, Dist. Raigad, PIN Code-402 116, State- Maharashtra, Country- India.



Report Prepared For




STATE BANK OF INDIA

SME-Ghatkopar Branch

Special SIB Branch, Hotel Roa Building, LBS Marg, Ghatkopar (West), Mumbai - 400 086

Vastukala Consultants (I) Pvt. Ltd.

121, 1st Floor, Ackruti Star, Central Road, MIDC, Andheri (East), Mumbai - 400 093, M.S., India

 : +91 2228371324/25 |  : +91 98195 97579 |  : www.vastukala.org

Mumbai • Delhi NCR • Indore • Aurangabad • Nanded • Pune
Raipur • Jaipur • Ahmedabad • Rajkot • Thane • Nashik

Index

Contents	Page No.
1. VALUATION OPINION REPORT	3
2. VALUATION REPORT (IN RESPECT OF PLANT AND MACHINERY)	4
3 VALUATION RATIONALE	6
4. DOCUMENTS REFERRED	12
5. ABOUT COMPANY	12
6. OBSERVATION	13
7. DETAILS OF PLANT AND MACHINERY	14
8. DECLARATION CUM UNDERTAKING (Annexure-IV)	55
9. ACTUAL SITE PHOTOGRAPHS	59
10. ROUTE MAP OF THE PROPERTY	79
11. ASSUMPTIONS, CAVEATS, LIMITATION AND DISCLAIMERS	80
12. DEFINITION OF VALUE FOR THIS SPECIFIC PURPOSE	83
13. VALUATION OF PLANT & MACHINERY	84



1. VALUATION OPINION REPORT

This is to certify that the Plant & Machinery on Plot No. 47, MIDC Industrial Area, Dhatav, Roha, Dist. Raigad, PIN Code-402 116, State- Maharashtra, Country- India belongs to **M/s. Sadhana Nitro Chem Ltd.**

Boundaries of the property

North	:	Road/ Kores (India) Ltd.
South	:	Open Plot
East	:	Road/ Sudarshan Pigments
West	:	Road/ Ground

Considering various parameters recorded, existing economic scenario, and the information that is available with reference to the industrial development and method selected for valuation, we are of the opinion that, the assets can be assessed and valued for particular purpose at:

Particulars	Fair Market Value	Realizable Value	Distress Sale Value
Plant & Machinery	₹ 82.01 Crores	₹ 69.71 Crores	₹ 57.41 Crores
Plant & Machinery-CWIP	₹ 16.06 Crores	₹ 13.65 Crores	₹ 11.24 Crores
Total	₹ 98.07 Crores	₹ 83.36 Crores	₹ 68.65 Crores

Hence certified.

For Vastukala Consultants (I) Pvt. Ltd.

UMANG
ASHWIN
PATEL

Digitally signed by UMANG ASHWIN PATEL
DN: c=IN, o=VASTUKALA CONSULTANTS (I)
PRIVATE LIMITED, ou=ADMIN,
2.5.4.20=084f6bcfaaa5d2df381fb7849bf7f9
82ef68198bca6b66f470a852d96e2c5ff,
postalCode=400069, st=Maharashtra,
serialNumber=0562a4861d25afb9c61a8957
0a25da8b73e945bd0c50f8a180dc06f47ff00
73e, cn=UMANG ASHWIN PATEL
Date: 2023.11.27 13:22:11 +05'30'



Umang Ashwin Patel

Govt. Reg. Valuer

Chartered Engineer (India)

Reg. No. CAT-VII-A-5062



www.vastukala.org

Our Pan India Presence at :

Mumbai	Aurangabad	Pune	Rajkot
Thane	Nanded	Indore	Raipur
Delhi NCR	Nashik	Ahmedabad	Jaipur

Regd. Office : B1-001, U/B Floor, Boomerang,
Chandivali Farm Road, Andheri (East),
Mumbai - 400 072, (M.S.), INDIA
TeleFax : +91 22 28371325/24
mumbai@vastukala.org



1. VALUATION OPINION REPORT

This is to certify that the Plant & Machinery on Plot No. 47, MIDC Industrial Area, Dhatav, Roha, Dist. Raigad, PIN Code-402 116, State- Maharashtra, Country- India belongs to **M/s. Sadhana Nitro Chem Ltd.**

Boundaries of the property

North	:	Road/ Kores (India) Ltd.
South	:	Open Plot
East	:	Road/ Sudarshan Pigments
West	:	Road/ Ground

Considering various parameters recorded, existing economic scenario, and the information that is available with reference to the industrial development and method selected for valuation, we are of the opinion that, the assets can be assessed and valued for particular purpose at:

Particulars	Fair Market Value	Realizable Value	Distress Sale Value
Plant & Machinery	₹ 82.01 Crores	₹ 69.71 Crores	₹ 57.41 Crores
Plant & Machinery-CWIP	₹ 16.06 Crores	₹ 13.65 Crores	₹ 11.24 Crores
Total	₹ 98.07 Crores	₹ 83.36 Crores	₹ 68.65 Crores

Hence certified.

For Vastukala Consultants (I) Pvt. Ltd.

**UMANG
ASHWIN
PATEL**

Umang Ashwin Patel

Govt. Reg. Valuer

Chartered Engineer (India)

Reg. No. CAT-VII-A-5062

Digitally signed by UMANG ASHWIN PATEL
DN: c=IN, o=VASTUKALA CONSULTANTS (I)
PRIVATE LIMITED, ou=ADMIN,
2.5.4.20=084f6bcfaaa5d2df381fb7849bf7f9
82ef6f198bca6b66f470a852d96e2c5ff,
postalCode=400069, st=Maharashtra,
serialNumber=0562a4861d25afb9c61a8957
6a25da8b73e945bd0c50f8a180dc06f47f00
73e, cn=UMANG ASHWIN PATEL
Date: 2023.11.27 13:22:11 +05'30'



Our Pan India Presence at :

Mumbai	Aurangabad	Pune	Rajkot
Thane	Nanded	Indore	Raipur
Delhi NCR	Nashik	Ahmedabad	Jaipur

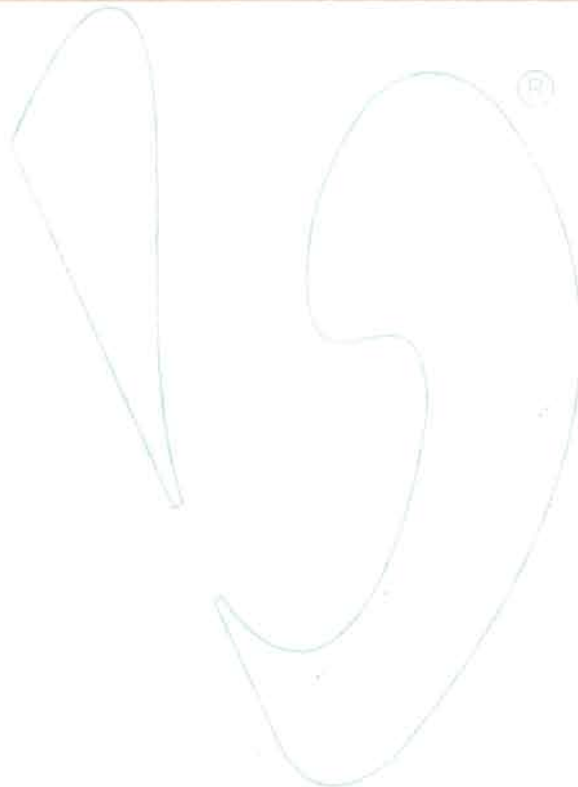
Regd. Office : B1-001, U/B Floor, Boomerang,
Chandivali Farm Road, Andheri (East),
Mumbai - 400 072, (M.S.), INDIA
TeleFax : +91 22 28371325/24
mumbai@vastukala.org

2. VALUATION REPORT (IN RESPECT OF PLANT AND MACHINERY)

To,
 The Chief Manager,
 State Bank of India,
 SME-Ghatkopar Branch
 Special SIB Branch, Hotel Roa Building, LBS Marg,
 Ghatkopar (West), Mumbai - 400 086.

I General (Form- O - 7)	
1.	Location of factory/ works/ premises : Plant & Machinery located at Plot No. 47, MIDC Industrial Area, Dhatav, Roha, Dist. Raigad, PIN Code-402 116, State- Maharashtra, Country- India.
2.	Purpose for which valuation is made : As per the request from State Bank of India, SME-Ghatkopar Branch to assess Fair Market value of the Plant & Machinery for Bank Loan purpose.
3.	a) Date of inspection : 04.09.2023
	b) Date on which the valuation is made : 27.11.2023
	c) Report Date : 27.11.2023
4.	Basis of valuation / assumptions made of : As mentioned below.
	a) Indigenous Machines : The Plant & Machinery under valuation are Indigenous and Imported. For Valuation Cost Approach is used for calculation of Fair Market Value.
	b) Imported Machines : Basis of Valuation is as under: - <ul style="list-style-type: none"> • Purchase Value/ Replacement Cost • Visual Observation • Specifications of Machinery • Manufacturer of Machinery • Condition of Machinery • Present Maintenance • Age of Machines

		<ul style="list-style-type: none">• Estimated Balance Economic Life• Depreciation calculated by straight line method <p>We have assessed the Fair Market Value (FMV) by applying appropriate depreciation considering the above parameters.</p>
5.	Details of the charges created on the assets	: Information not available



Think.Innovate.Create

3 VALUATION RATIONALE

3.1 METHODOLOGIES

3.1.1 MARKET APPROACH

As per Ind AS 113: Appendix A, it is defined as a valuation technique that uses prices and other relevant information generated by market transactions involving identical or comparable (i.e. similar) assets, liabilities or a group of assets and liabilities.

In order to compare the subject of the valuation with the price of the other tangible asset interests, Valuers adopt generally accepted and appropriate units of comparison that are considered by participants, dependent upon the type of asset being valued.

As per IVS 400 differences that should be considered in valuing tangible asset interests include, but are not limited to:

- a) The type of interest providing the price evidence and the type of interest being valued,
- b) The respective locations,
- c) The respective configuration,
- d) The circumstances under which the price was determined, and the basis of value required,
- e) The effective date of the price evidence and the valuation date, and market conditions at the time of the relevant transactions and how they differ from conditions at the valuation date.

Direct Sales Comparison Method is the most common method under the Market Approach for Plant and Machinery Valuation. The basic fundamental for this method is on the assumption that an informed purchaser would not pay more for an item than the cost of acquiring an existing one with the same utility. This method is preferred when valuing plant and machinery for which there is a known and active secondary market. In applying it under the 'in-situ' premise, an allowance then is made to reflect the cost of delivery, installation taxes, fees and duties known as indirect or additional costs.

Comparable Match Method is other method under market approach for plant and machinery valuation. This technique establishes values based on the analysis of similar (but not identical) assets using some measure of utility (size, capacity, year manufactured, etc.) as the basis of comparison. The main difference from direct sales comparison method is that the comparisons may not be similar in terms of model and year built, but has other similarities such as capacity, brand acceptance or same country of origin. Hence, appropriate adjustments have to be made on the comparable before the value of asset can be derived.

3.1.2 INCOME APPROACH

It is defined as valuation technique that convert future amounts (e.g., cash flows or income and expenses) to a single current (i.e., discounted) amount. The fair value measurement is determined on the basis of the value indicated by current market expectations about future amounts.

The income approach is defined in the International Glossary of Business Valuation Terms as "A general way of determining a value indication of a business, business ownership interest, security or intangible asset using one or more methods that converts anticipated economic benefits into a present single amount."

The development of a yield or discount rate should be influenced by the objective of the valuation. For example:

- a) If the objective of the valuation is to establish the value to a particular owner or potential owner based on their own investment criteria, the rate used may reflect their required rate of return or their weighted average cost of capital, and
- b) If the objective of the valuation is to establish the market value, the discount rate may be derived from observation of the returns implicit in the price paid for tangible asset interests traded in the market between participants or from hypothetical participant's required rates or return. When a discount rate is based on an analysis of market transactions, Valuers should also follow the guidance contained in IVS 105 Valuation Approaches and Methods.

Two methods are typically used to value machinery and equipment using the income approach, Direct Capitalization Method and Discounted Cash Flow Method.

Direct Capitalization Method involves capitalizing a 'normalized' single year net income estimated by an appropriate market-based yield. It capitalizes a projected cash flow into perpetuity and the capitalization rate that is calculated has no changes.

Discounted Cash Flow Method is a multiple period model. Using this method, future cash flows from the asset are forecasted using market stated assumptions as well as future capital and operational expenditures projected by the company. This method allows for the explicit modelling of income and expense associated with the assets. These future financial benefits are then discounted to a present-day value at an appropriate discount rate taking into account return on investment and risk.



3.1.3 COST APPROACH

The cost approach is commonly adopted method for plant and equipment, particularly in the case of individual assets that are specialised or special-use facilities. In cost approach appraisal, the market price for the asset is equal to the cost, less depreciation. It yields the most accurate market value when the asset is new.

Replacement Cost New is the cost of obtaining an alternative asset of equivalent utility; this can either be a modern equivalent providing the same functionality or the cost of reproducing an exact replica of the subject asset. After concluding on a replacement cost, the value should be adjusted to reflect the impact on value of physical, functional, technological and economic obsolescence on value. In any event, adjustments made to any particular replacement cost should be designed to produce the same cost as the modern equivalent asset from an output and utility point of view. In addition, other applicable direct & indirect cost applicable in the current market conditions will be factored to arrive at current RCN for the machineries.

Reproduction Cost New Method is appropriate in circumstances where the cost of a modern equivalent asset is greater than the cost of recreating a replica of the subject asset or the utility offered by the subject asset could only be provided by a replica rather than a modern equivalent. Under Indexing Method, a ratio multiplier based on applicable index of a particular category of assets in comparison to the similar index at the time of procurement/ acquisition of asset is computed. The ratio multiplier is computed from Wholesale Price Index (WPI) published by Reserve Bank of India for various categories of assets. This multiplier is then applied to historical cost to estimate the current replacement cost of the assets. Under this scenario, capitalized values in the fixed register would typically involve all direct and indirect costs and thus, no extra costs will be factored to estimate current replacement cost.

3.2 OTHER TERMINOLOGIES USED

3.2.1 DEPRECIATED REPLACEMENT COST

In regard to the Appraisal and Guidance Notes issued by the International Valuation Standards Council (IVSC) in which the Depreciated Replacement Cost is defined as:

“The current cost of replacing an asset with its modern equivalent asset less deductions for physical deterioration and all relevant forms of obsolescence and optimization.”

Under Cost Approach, the fair value of the Plant & Machinery component will be assessed through 'Depreciated Replacement Cost' (DRC) Method. In this approach, the Current Replacement Cost of the assets (given the current condition of the asset) is evaluated after giving regards to parameters such as Make, Model, Capacity, Technical specification, Types of process, construction specifications, age of the Machinery, Country of origin, etc. and the same has been depreciated based on parameters such as age, physical condition of the components, remaining useful life, technical obsolescence, etc. of individual components.

3.2.2 TOTAL ECONOMIC/ PHYSICAL LIFE

The total economic life of the assets has been considered on the basis of economic life prescribed for various categories under Schedule II, Part C of Indian Companies Act, 2013 and Useful life of machines catalogue published by American Society of Appraisers (ASA). Wherever the age of machineries had exceeded the prescribed total economic life, typically future/ balance physical life will be adopted on the basis of physical/ working condition of the assets. It is to be noted that estimated future physical life of the machineries is based on the visual/ physical observation of the valuer as of date of inspection and no technical evaluation regarding the durability of machineries has been undertaken.

3.2.3 SCRAP & SALVAGE VALUE

Salvage value is the estimated amount that an asset is worth at the end of its useful life. It is also known as scrap value or residual value and is used while determining the depreciation of an asset.

Think.Innovate.Create

3.2.4 IN-SITU & EX-SITU VALUE

Under In-situ value, the assets will remain in their existing place and location (In-Situ) following the completion of sale. In-situ value is typically assessed in the case of assessment of Fair Value on 'going concern' basis. In this scenario, the prospective buyer for the unit would comprehend the requirement of necessary industrial infrastructure (including other indirect costs that are typically allowed for capitalization) that is required for the operations of the industry.

Under Ex-situ value, the assets will be removed from their existing location following the completion of sale and this typically utilized in the case of assessment of Liquidation Value or



Forced Sale Value. In this scenario, adjustments are required to exclude necessary costs & charges such as foundation costs, decommissioning costs, etc.

3.3 FACTORS AFFECTING THE VALUE

3.3.1 GENERAL FACTORS

The value of P&E starts with the inspection. This is done to ascertain the condition of the plant and also to determine if the information provided to them is usable and related to the subject assets being valued. The factors generally considered during inspection are:

ASSET RELATED

- The asset's technical specification
- The remaining useful, economic or effective life, considering both preventive and predictive maintenance
- The asset's condition including maintenance history
- Any functional, physical or technological obsolescence
- Additional costs associated with additional equipment, transport, installation and commissioning etc.

ENVIRONMENT RELATED

- The location in relation to the source of raw material and market for the product
- The impact of any environmental or other legislation that either restricts utilization or imposes additional operation or decommissioning costs
- Licenses to operate machineries which produce or utilize radioactive substances or toxic wastes and that may be restricted in certain countries.

ECONOMY RELATED

- The actual or potential profitability of the asset based on comparison of operating costs with earnings or potential earnings
- The demand for the product manufactured by the plant with regard to both macro and micro-economic factors could impact on demand
- The potential for the asset to be put to a more valuable use than the current use (i.e. HABU)

3.3.3 FACTORS RELATED TO IMPORTED ASSETS

For assessing Current Replacement Cost of imported Machineries (if any), I have adopted the current price (vide replacement cost method or index method using producer price index issued by central bank of respective country) of the machineries along with prevailing currency exchange rate, duties, freight charges, commissioning costs, etc.

3.3.4 FACTORS RELATED TO USED ASSETS

The methodologies and approaches specified above are equitably used in the case of transferred assets. Replacement cost of second-hand machineries/ transferred equipment is assessed after taking proper consideration to the actual year of manufacturing of the plant and machineries, country of origin, actual invoice or Historic cost, etc. It is to be noted that the details related to the same has been availed from the Client as well as based on my best effort basis.

3.4 METHODOLOGY ADOPTED

As stated earlier, the fair value of Plant and Machinery has been estimated through Depreciated Replacement Cost Method.

3.5 VALUATION

3.5.1 VALUATION APPROACH

Fair Value assessed is the 'in-situ' and on 'going concern' basis that assumes that the enterprise shall continue to operate and run its business and that specified fixed asset shall continue to have economic utility. Under this assessment, I have assumed that the prospective buyer for the unit would comprehend the requirement of necessary industrial infrastructure (including other indirect costs which are typically allowed for capitalization) that is required for the operations of the industry. Fair Value of the assets has been assessed on the basis of the afore-mentioned premise.



4. DOCUMENTS REFERRED:-

Party has provided the Copy of following documents/ Information.

- Fixed Asset Register as 31.03.2023.
- Audited Balance Sheet for the year ended at 31.03.2023.

5. ABOUT COMPANY:-

- **M/s. Sadhana Nitro Chem Limited ("SNCL" or "Company")** is a Public Limited Company incorporated on 21st July 1973. It is classified as non-govt. company and is registered at Registrar of Companies, Mumbai.
- SNCL's Corporate Identification Number is (CIN) L24110MH1973PLC016698 and its registration number is 16698. Its registered address is Hira Baug, 1st Floor Kasturba Chowk (C.P. Tank) Mumbai-400 004.
- The Company's registered office is located at Mumbai, Maharashtra India and manufacturing facility is located at Roha, Raigad District, Maharashtra, India. The company's equity shares are listed on the Bombay Stock Exchange (BSE) and National stock Exchange (NSE).
- SNCL is engaged in the manufacturing of various chemical intermediates, heavy organic chemicals and performance chemicals, focused primarily on benzene based compounds like nitro benzene, metanilic acid, meta amino phenol (MAP), etc. The products have diverse applications in several industries including paper, pharmaceutical, agro chemicals, thermal dyes, light stabilizers, aerospace dyes and dye intermediates.
- SNCL is an ISO 9001:2015 company committed to producing high quality intermediate speciality chemicals.
- Since its inception in 1973, SNCL has built a strong reputation of manufacturing quality products along with excellence in service to clients worldwide. Production of intermediates under strict quality standards has been the hallmark of SNCL's success in attuning and propelling it to customer requirements.
- Presently, SNCL manufactures downstream derivatives of Nitrobenzene and other intermediates for various applications in aerospace, pharma and agro, optical brightening agents, plastic additives, special fibres, epoxy resin hardeners, dyes and performance chemicals.

- SNCL provides immediate and assured service to its European clientele through its 100% subsidiary Anuchem b.v.b.a. in Antwerp, Belgium.
- SNCL is a government recognized 2-Star Golden Export House.

6. OBSERVATION

- The Plant & Machinery under valuation is located at Plot No. 47, MIDC Industrial Area, Dhatav, Roha, Dist. Raigad, PIN Code-402 116, State- Maharashtra, Country- India.
- The Plant & Machinery installed are of Indigenous & Imported.
- The Plant & Machinery consist of Plant & Machinery- Capitalized and CWIP.
- Company has provided the Fixed Asset Register and the same are considered the base of our valuation.
- During the date and time of our visit, the Plant was in operation.
- The Assets under valuation are well maintained by in house maintenance team.
- Mr. Ravikant Gandhi (Contact No.- +91 99303 67502) accompanied our Engineer and showed the Plant & Machinery under valuation.

Think.Innovate.Create



7. DETAILS OF PLANT AND MACHINERY:-

7.1 PLANT AND MACHINERY-CAPITALIZED

S. No.	Description	Plant	Year of Capitalization	Residual Life (Yrs)	Gross Block as at 31.03.2023 (₹)	Net Block as at 31.03.2023 (₹)	Fair Market Value (₹)
1	BMNK	Others	1999-2000	2	3,10,478	13,657	52,542
2	KETO Acid DBKA P&M	DBKA	2003-2004	2	15,95,410	91,904	2,90,075
3	KETO Acid DBKA P&M	DBKA	2004-2005	2	61,65,376	2,63,552	11,44,998
4	KETO Acid DBKA P&M	DBKA	2005-06	2	7,767	502	1,476
5	DEAP	DEAP	1997-98	2	60,146	2,492	9,881
6	DEAP	DEAP	1997-98	2	25,49,428	1,20,862	4,18,835
7	Weigh Bridge	Others	2000-01	2	3,38,488	16,717	58,220
8	Weigh Bridge	Others	2000-01	2	28,881	1,427	4,968
9	Weigh Bridge	Others	2001-02	2	13,835	678	2,421
10	Weigh Bridge	Others	2000-01	2	6,72,504	33,212	1,15,671
11	Weigh Bridge	Others	2001-02	2	1,51,196	7,168	26,459
12	Weigh Bridge	Others	1998-99	2	96,351	4,364	16,059
13	BTCA Scrubbing System	BTCA	1999-00	2	7,51,827	34,320	1,27,232
14	BTCA Scrubbing System	BTCA	2000-01	2	2,03,137	9,257	34,940
15	BTCA Scrubbing System	BTCA	1999-00	2	1,70,330	8,033	28,825
16	BTCA Nitric Acid Recovery Sys	BTCA	1998-99	2	38,22,823	1,46,746	6,37,137
17	Plant and Machinery	MIPA	2004-05	0	4,81,979	4,81,979	-
18	MIPA Distillation System (FEF)	MIPA	2004-05	Negative Entry	-11,55,849	-52,573	-11,55,849
19	MIPA Distillation System(Add)	MIPA	2005-06	2	13,376	774	2,541
20	Colour Former CF P&M	CF - II	2005-06	2	5,17,62,093	33,45,227	98,34,798
21	CAD Software	Others	2003-04	0	1,26,622	12,687	-
22	Dock Delivery	Others	2004-05	2	2,56,255	14,054	47,590
23	Lab Equipment	R & D	2003-04	0	7,73,516	94,361	-
24	R& D Equipment	R & D	1998-99	0	49,01,603	3,81,925	-
25	R& D Equipment	R & D	1999-00	0	4,48,878	34,976	-
26	R& D Equipment	R & D	2000-01	0	66,298	5,166	-
27	R& D Equipment	R & D	2000-01	0	92,818	7,232	-
28	R& D Equipment	R & D	2001-02	0	5,75,753	73,619	-
29	R& D Equipment	R & D	1998-99	0	18,40,376	1,43,399	-
30	R& D Equipment	R & D	1998-99	0	88,924	6,930	-
31	R& D Equipment	R & D	2006-07	0	15,200	742	-
32	R& D Equipment	R & D	2007-08	0	6,26,012	25,662	-
33	R& D Equipment	R & D	2009-10	1	3,72,750	6,547	59,640
34	R& D Equipment	R & D	2010-11	2	39,888	1,243	8,775
35	R& D Equipment	R & D	2011-12	3	2,95,244	14,264	82,668
36	R& D Equipment	R & D	2012-13	4	42,553	2,621	14,468
37	R& D Equipment	R & D	2013-14	5	62,703	6,544	25,081
38	Forklift	Others	2007-08	2	85,400	3,582	17,080
39	Equipments - NB	Nitrobenzen	2002-03	2	93,77,347	4,73,438	16,71,614

S. No.	Description	Plant	Year of Capitalization	Residual Life (Yrs)	Gross Block as at 31.03.2023 (₹)	Net Block as at 31.03.2023 (₹)	Fair Market Value (₹)
40	MAP II P&M	MAP - II	2000-01	2	7,29,51,483	31,79,893	1,25,47,655
41	MAP II P&M	MAP - II	2006-07	3	10,85,098	45,439	2,54,998
42	MAP II P&M	MAP - II	2006-07	3	20,000	907	4,700
43	MAP II (foreign ex fluctuation) P&M	MAP - II	2000-01	Negative Entry	-28,49,438	-83,884	-28,49,438
44	MARS P & M	MARS	1998-99	2	4,58,13,265	16,39,374	76,35,544
45	DEMAP P&M	DEMAP	1998-99	2	55,40,372	1,64,075	9,23,395
46	Aniline DSA P&M	Aniline DSA	2009-10	6	8,73,281	2,92,514	3,23,114
47	Aniline DSA P&M	Aniline DSA	2010-11	7	48,31,746	17,99,729	20,05,175
48	Aniline DSA P&M	Aniline DSA	2008-09	5	21,23,837	1,87,242	6,90,247
49	Aniline DSA	Aniline DSA	2007-08	4	9,80,355	33,347	2,74,499
50	Boiler - Baggas	Others	2009-10	6	48,75,513	15,99,163	18,03,940
51	Boiler - Baggas	Others	2011-12	8	20,36,834	9,08,023	9,36,944
52	Boiler	Others	2008-09	5	28,937	8,266	9,405
53	BTCA P&M	BTCA	2008-09	5	3,68,486	32,488	1,19,758
54	BTCA P&M	BTCA	2011-12	8	1,12,902	54,802	51,935
55	BTCA P&M	BTCA	2013-14	10	1,89,000	98,696	1,03,950
56	Colour Former Plant P&M	CF - II	2006-07	3	43,02,487	8,11,019	10,11,084
57	Colour Former Plant P&M	CF - II	2007-08	4	10,45,492	2,60,297	2,92,738
58	Colour Former Plant P&M	CF - II	2008-09	5	5,70,484	1,62,914	1,85,407
59	Colour Former Plant P&M	CF - II	2010-11	7	11,00,421	4,10,705	4,56,675
60	Colour Former Plant P&M	CF - II	2009-10	6	5,99,36,923	2,05,42,071	2,21,76,662
61	DADS P&M	DADS	2015-16	12	12,83,521	7,75,907	8,21,453
62	ETP	ETP	2006-07	0	28,32,540	-	-
63	ETP P&M	ETP	2012-13	9	3,40,280	97,607	1,71,841
64	ETP	ETP	2013-14	0	3,94,800	-	-
65	ETP	ETP	2008-09	0	4,12,361	-	-
66	ETP	ETP	2006-07	0	96,803	-	-
67	ETP	ETP	2007-08	0	19,61,591	-	-
68	ETP	ETP	2008-09	0	31,203	1	-
69	Fire Fighting Equipments	Others	2006-07	0	18,150	3,494	-
70	Fire Fighting Equipments	Others	2006-07	0	1,99,812	39,650	-
71	LT Room OTHERS	Others	2008-09	0	87,611	10,168	-
72	MAP II P&M	MAP - II	2013-14	10	18,950	9,896	10,423
73	MAP II P&M	MAP - II	2008-09	5	10,91,147	3,11,600	3,54,623
74	MAP III P&M	MAP - III	2009-10	6	19,39,853	6,49,773	7,17,746
75	MAP III P&M	MAP - III	2010-11	7	15,06,572	5,62,290	6,25,227
76	MAP III P&M	MAP - III	2011-12	8	2,78,431	1,26,465	1,28,078
77	MAP III P&M	MAP - III	2013-14	10	12,47,426	6,51,419	6,86,084
78	MAP III P&M	MAP - III	2011-12	8	24,54,012	11,25,540	11,28,846
79	MAP III P&M	MAP - III	2012-13	9	4,46,835	2,20,925	2,25,652
80	MAP III P&M	MAP - III	2014-15	11	16,22,230	9,28,727	9,65,227
81	MAP III P&M	MAP - III	2006-07	3	8,02,07,762	1,54,72,077	1,88,48,824



S No.	Description	Plant	Year of Capitalization	Residual Life (Yrs)	Gross Block as at 31.03.2023 (₹)	Net Block as at 31.03.2023 (₹)	Fair Market Value (₹)
82	MAP III P&M	MAP - III	2007-08	4	12,92,134	3,45,461	3,61,798
83	MAP III P&M	MAP - III	2008-09	5	10,30,421	2,94,259	3,34,887
84	MAP III P&M	MAP - III	2007-08	4	8,90,942	2,31,615	2,49,464
85	MAP II P&M	MAP - II	2007-08	4	94,781	22,435	26,539
86	MAP II P&M	MAP - II	2008-09	5	27,72,739	7,91,815	9,01,140
87	MAP II P&M	MAP - II	2009-10	6	2,45,971	82,390	91,009
88	MAP II P&M	MAP - II	2010-11	7	1,17,160	45,080	48,621
89	MAP II P&M	MAP - II	2006-07	3	19,39,659	3,52,824	4,55,820
90	MAP P&M	MAP	2008-09	5	7,54,670	2,15,512	2,45,268
91	MAP P&M	MAP	2008-09	5	13,48,541	3,85,105	4,38,276
92	MAP P&M	MAP	2006-07	3	11,43,449	2,12,318	2,68,711
93	MAP P&M	MAP	2009-10	6	35,31,555	11,82,894	13,06,675
94	MAP P&M	MAP	2013-14	10	6,25,000	3,26,382	3,43,750
95	MAP P&M	MAP	2008-09	5	14,192	4,053	4,612
96	MAP P&M	MAP	2009-10	6	41,266	13,822	15,268
97	MAP P&M	MAP	2010-11	7	92,031	35,411	38,193
98	MAP P&M	MAP	2007-08	4	4,22,43,168	99,99,283	1,18,28,087
99	MAP P&M	MAP	2008-09	5	8,69,359	2,48,264	2,82,542
100	MARS P & M	MARS	2006-07	3	57,59,133	10,85,597	13,53,396
101	Nitric Acid Recovery System OTHERS	Others	2009-10	6	21,77,923	7,20,795	8,05,832
102	Nitric Acid Recovery System	Others	2010-11	0	1,15,005	-	-
103	Nitrobenzen P&M NB	Nitrobenzen	2011-12	8	2,55,550	1,20,005	1,17,553
104	Nitrobenzen P&M NB	Nitrobenzen	2006-07	3	25,17,402	4,62,791	5,91,589
105	Nitrobenzen P&M NB	Nitrobenzen	2007-08	4	12,20,978	3,20,615	3,41,874
106	Nitrobenzen P&M NB	Nitrobenzen	2008-09	5	1,14,194	32,611	37,113
107	PILOT	Pilot	2007-08	4	9,18,675	8,403	2,57,229
108	Stiching Marking Machine	Others	2006-07	0	16,568	3,189	-
109	Stiching Marking Machine	Others	2008-09	0	11,442	3,387	-
110	Water Line	Others	2008-09	0	24,395	2,831	-
111	Work shop machine	Others	2008-09	5	56,320	6,536	18,304
112	Boiler	Others	2016-17	13	11,63,734	7,83,836	7,97,158
113	MAP P&M	MAP	2016-17	13	17,02,586	11,64,226	11,66,271
114	MAP P&M	MAP	2016-17	13	33,51,108	23,33,275	22,95,509
115	MAP P&M	MAP	2016-17	13	35,495	23,693	24,314
116	BTCA PLANT & MACHINERY	BTCA	2016-17	13	2,64,79,719	8,92,052	1,81,38,608
117	BTCA Foreign Exchange Fluctuation	BTCA	2016-17	Negative Entry	-10,05,765	-1,40,399	-10,05,765
118	NB Plant & Machinery (Old)	Nitrobenzen	2016-17	0	71,89,327	-	-
119	MARS Plant & Machinery (Old)	MARS	2016-17	0	23,73,281	-	-
120	BBA Plant & Machinery	BBA	2016-17	13	9,22,083	37,896	6,31,627
121	Pilot Plant & m	Pilot	2016-17	13	13,26,401	5,159	9,08,585
122	Fire Equipment (Old)	Others	2016-17	3	26,314	139	9,736
123	Fire Equipment (New)	Others	2016-17	3	1,00,062	1,766	37,023

S. No.	Description	Plant	Year of Capitalization	Residual Life (Yrs)	Gross Block as at 31.03.2023 (₹)	Net Block as at 31.03.2023 (₹)	Fair Market Value (₹)
124	Fire Hydrant System	Others	2016-17	13	21,77,540	92,488	14,91,615
125	Stitching/Marking M/cs. (Old)	Others	2016-17	3	22,055	434	8,160
126	Stitching/Marking M/cs. (New)	Others	2016-17	3	1,00,214	2,446	37,079
127	Effluent Treatment Plant	ETP	2016-17	0	71,78,833	-	-
128	ETP Incinerator System	ETP	2016-17	0	48,36,120	-	-
129	ANDS Scrubbing System	ANDS	2016-17	13	4,91,208	21,372	3,36,477
130	Library Books	R & D	2016-17	3	1,01,976	3,309	37,731
131	Q.C.Lab-Roha-General Machinery	R & D	2016-17	3	2,46,216	15,305	91,100
132	DM Water Plant	Others	2016-17	13	3,74,025	3,103	2,56,207
133	Equipments	Others	2016-17	13	3,80,947	1,769	2,60,948
134	Machineries	Others	2016-17	3	61,783	232	22,860
135	Vats	Others	2016-17	Charges	34,535	135	-
136	Gear Boxes	Others	2016-17	3	45,661	192	16,895
137	Electric Motors	Others	2016-17	8	14,150	60	8,207
138	ETP Incinerator System	ETP	2016-17	13	4,11,76,321	16,05,710	2,82,05,780
139	Foreign Exchange Fluctuation 2.5	Others	2016-17	13	75,25,104	90	51,54,696
140	ACHBP PLANT & MACHINERY	Others	2016-17	13	46,44,266	1,23,130	31,81,322
141	Tanks	Others	2016-17	13	13,04,427	13,479	8,93,533
142	Electric Motors	Others	2016-17	8	76,222	672	44,209
143	Pipe/Pipe Fittings	Others	2016-17	8	15,012	56	8,707
144	Workshop Machinery	Others	2016-17	3	1,73,479	1,269	64,187
145	Pumps	Others	2016-17	8	3,29,961	17,833	1,91,378
146	Utilities (Cooling Tower)	Others	2016-17	3	2,20,253	1,213	81,494
147	Machineries	Others	2016-17	13	42,69,191	1,77,542	29,24,396
148	Flash Dryers	Others	2016-17	13	12,83,824	7,879	8,79,419
149	Wooden Vats	Others	2016-17	3	2,48,524	1,004	91,954
150	Instruments	Others	2016-17	13	3,20,134	3,129	2,19,292
151	Electric Motors	Others	2016-17	8	13,33,924	68,438	7,73,676
152	Pumps	Others	2016-17	8	10,29,149	20,784	5,96,906
153	Gear Boxes	Others	2016-17	13	9,87,187	9,945	6,76,223
154	Pipe/Pipe Fittings	Others	2016-17	8	24,25,242	28,639	14,06,640
155	Electric Installations	Others	2016-17	13	46,77,891	27,864	32,04,355
156	Boilers (IAEC/Elite)	Others	2016-17	13	20,46,767	8,505	14,02,036
157	Hire Purchase Equipemnts	Others	2016-17	13	37,71,950	15,050	25,83,786
158	Oleum Scrubbing System	Others	2016-17	13	4,47,340	6,488	3,06,428
159	Boilers - J.N.Marshall	Others	2016-17	0	31,37,137	-	-
160	Equipments	Others	2016-17	3	1,39,795	3,243	51,724
161	Machineries	Others	2016-17	3	1,09,909	2,550	40,667
162	Vats	Others	2016-17	Charges	90,132	2,011	-
163	Dryers	Others	2016-17	3	21,013	488	7,775
164	Pumps	Others	2016-17	8	16,280	378	9,442



S. No.	Description	Plant	Year of Capitalization	Residual Life (Yrs)	Gross Block as at 31.03.2023 (₹)	Net Block as at 31.03.2023 (₹)	Fair Market Value (₹)
165	Electric Motors	Others	2016-17	8	24,930	578	14,459
166	Pipe/Pipe Fittings (N.E.S.A)	Others	2016-17	8	46,366	464	26,892
167	Electricals (N.E.S.A)	Others	2016-17	3	7,744	78	2,865
168	Equipments	Others	2016-17	13	5,43,944	2,176	3,72,602
169	Machineries	Others	2016-17	3	1,61,327	645	59,691
170	Electric Motors	Others	2016-17	8	16,553	66	9,601
171	Gear Boxes	Others	2016-17	3	84,750	339	31,358
172	Equipments	Others	2016-17	3	20,000	80	7,400
173	Pipe/Pipe Fittings	Others	2016-17	8	1,83,307	733	1,06,318
174	Neutralisation System	Others	2016-17	0	36,12,452	-	-
175	Piping, Fittings, Valves	Others	2016-17	8	2,94,127	3,641	1,70,594
176	Structures- Chilled Water Sys.	Others	2016-17	0	25,807	326	-
177	Tank farm & Foundations	Others	2016-17	13	5,80,345	7,185	3,97,536
178	De-Humidification System	Others	2016-17	13	8,98,616	26,931	6,15,552
179	Carbon Dioxide System	Others	2016-17	13	7,31,325	33,415	5,00,958
180	Know-how & Basic Engg.	Others	2016-17	0	1,05,34,055	-	-
181	Detail Engineering	Others	2016-17	0	24,83,594	-	-
182	Technician's Fees	Others	2016-17	0	32,86,290	-	-
183	Procurement & Commissioning	Others	2016-17	13	7,59,541	9,403	5,20,286
184	Labour Charges	Others	2016-17	Charges	1,51,533	1,876	-
185	Machinery & Stores	Others	2016-17	13	6,40,59,361	19,43,145	4,38,80,662
186	Machinery & Stores	Others	2016-17	3	88,926	5,528	32,903
187	F.Exc.Fluctutaion (Interest)	Others	2016-17	0	8,38,519	-	-
188	F.C.Loan Exchange Diff.	Others	2016-17	0	1,28,04,211	-	-
189	Laboratory Equipment (New)	R & D	2016-17	13	25,69,677	4,52,002	17,60,229
190	Laboratory Equipment (New)	R & D	2016-17	3	78,031	13,728	28,871
191	Laboratory Equipment (New)	R & D	2016-17	13	12,21,693	2,14,933	8,36,860
192	Laboratory Equipment (New)	R & D	2016-17	13	12,49,019	1,14,717	8,55,578
193	Laboratory Equipment (New)	R & D	2016-17	13	13,08,441	2,30,195	8,96,282
194	Laboratory Equipment (New)	R & D	2016-17	13	8,50,850	1,49,690	5,82,832
195	Laboratory Equipments (Old)	R & D	2016-17	Negative Entry	48,273	-540	48,273
196	MAP R&D Cess & Tax	MAP	2016-17	Negative Entry	40,68,632	-6,902	40,68,632
197	New R&D Laboratory	R & D	2016-17	8	4,31,796	3,344	2,50,442

S. No	Description	Plant	Year of Capitalization	Residual Life (Yrs)	Gross Block as at 31.03.2023 (₹)	Net Block as at 31.03.2023 (₹)	Fair Market Value (₹)
198	Map Iii (Foreign Exchange Fluctuation)11-12	MAP - III	2016-17	13	27,58,520	11,98,372	18,89,586
199	ANDS -I P&M	ANDS	2017-18	14	9,00,000	6,50,527	6,57,000
200	ANDS -I P&M	ANDS	2017-18	14	3,44,517	2,49,020	2,51,497
201	ANDS -I P&M	ANDS	2017-18	14	3,51,900	2,64,202	2,56,887
202	ANDS -I P&M	ANDS	2017-18	14	2,27,500	1,70,123	1,66,075
203	ANDS -I P&M	ANDS	2017-18	14	9,10,000	6,88,664	6,64,300
204	MA - I P&M	MA - I	2017-18	14	1,84,500	1,38,808	1,34,685
205	MA - II P&M	MA - II	2017-18	14	1,70,000	1,22,877	1,24,100
206	MA - II P&M	MA - II	2017-18	14	1,53,099	1,14,945	1,11,762
207	MA - II P&M	MA - II	2017-18	14	7,12,105	5,37,512	5,19,837
208	MA - II P&M	MA - II	2017-18	14	1,25,501	94,878	91,616
209	MA - II P&M	MA - II	2017-18	14	1,81,500	1,37,850	1,32,495
210	MAP - II P&M	MAP - II	2017-18	14	18,865	13,525	13,771
211	MAP - I P&M	MAP - I	2017-18	14	2,50,000	1,84,704	1,82,500
212	MAP - 1(Expansion) P&M	MAP - I (Expansion)	2017-18	14	31,74,117	24,00,013	23,17,105
213	Plant & Machinery	Others	2017-18	0	2,65,000	1,96,855	-
214	ETP P&M	ETP	2017-18	14	25,37,852	18,34,380	18,52,632
215	High Prominence System Controller(HPLC)	R & D	2018-19	15	9,55,000	7,36,639	7,40,125
216	PVC Insulated GI Chain	Others	2018-19	10	1,91,241	1,46,692	1,33,868
217	Plant and Machinery CF - II	CF - II	2018-19	15	1,31,78,008	98,83,506	1,02,12,956
218	Ball Valve - 1 no, R-205 Vessel	CF - II	2018-19	10	20,400	15,595	14,280
219	Pedestal Fan - 2	CF - II	2018-19	5	50,243	38,369	27,633
220	Agitator -1, R-205	CF - II	2018-19	15	2,65,000	2,02,994	2,05,375
221	10hp Motor - 1, Gear Box - 1	CF - II	2018-19	10	66,433	50,889	46,503
222	Mechanical Seal	CF - II	2018-19	5	57,656	44,165	31,711
223	Oil Sealed Rotary Vane High Vacum Pump - 1 No	R & D	2018-19	10	59,100	32,443	41,370
224	Automatic Karl Fischer Titrator	R & D	2018-19	10	1,70,000	93,321	1,19,000
225	UV-VIS Spectrophotometer, qty - 1	R & D	2018-19	15	3,10,000	1,75,740	2,40,250
226	Fabrication & Supply of Chimney	MAP - I	2018-19	15	12,75,000	9,89,278	9,88,125
227	DILUTION VESSEL	MAP - I	2018-19	15	7,03,500	5,47,680	5,45,213
228	DILUTION VESSEL	MAP - I	2018-19	15	7,03,500	5,52,074	5,45,213
229	Fabrication & Supply of Measuring Vessel	MAP - I	2018-19	15	5,50,000	4,32,044	4,26,250
230	Fabrication & Supply of 1.5kl, 5.0kl ver tank for NaOH & KaOH - 2 nos	MAP - I (Expansion)	2018-19	15	1,87,000	1,46,067	1,44,925



S. No.	Description	Plant	Year of Capitalization	Residual Life (Yrs)	Gross Block as at 31.03.2023 (₹)	Net Block as at 31.03.2023 (₹)	Fair Market Value (₹)
231	Fabrication Machining & Nickel Cladding of Agitator for fusion vessel	MAP - II	2018-19	15	5,40,000	4,18,426	4,18,500
232	for rduction vessel (VBD Blower - 2 nos)	MAP - II	2018-19	15	4,56,378	3,55,293	3,53,693
233	Fabrication Machining & Nickel Cladding of Agitator for fusion vessel	MAP - III	2018-19	15	5,40,000	4,23,415	4,18,500
234	Lantern Stool Spacer	MAP - III	2018-19	5	20,000	15,518	11,000
235	NSA TANK RUBBER LINING	MA - I	2018-19	15	1,57,741	1,22,166	1,22,249
236	Fab & Suppl of 6.0 hor tank	MA - I	2018-19	15	2,11,000	1,64,265	1,63,525
237	Fabrication & Supply of 6.0 M3 NSA Tank - 1 no	MA - I	2018-19	15	2,10,000	1,63,486	1,62,750
238	Water Vacuum Pump model LWV - 50	MA - I	2018-19	10	3,02,020	2,35,989	2,11,414
239	Fabrication & Supply of Reactor Vessel - 2	CF - II	2018-19	15	13,95,000	10,95,820	10,81,125
240	Fabrication & Supply of Reactor Vessel - 1	CF - II	2018-19	15	13,65,000	10,72,254	10,57,875
241	Fabrication & Supply of 4kl, ver tank - 2 nos	CF - II	2018-19	15	7,84,000	6,14,635	6,07,600
242	SS 316 Super Impellers - 1 No	CF - II	2018-19	10	99,450	77,423	69,615
243	SS 316 Super Impellers - 4 No	CF - II	2018-19	15	5,20,200	4,07,078	4,03,155
244	10hp motor - 1 and Gear Box - 1	CF - II	2018-19	10	66,433	51,451	46,503
245	Gear Box - 4, Motors - 12.5hp, 15hp, 7.5hp - 4	CF - II	2018-19	10	3,39,428	2,65,616	2,37,600
246	Water Pumps - 10	CF - II	2018-19	10	4,76,437	3,72,832	3,33,506
247	Water Chilling Plant	CF - II	2018-19	15	14,30,000	11,13,265	11,08,250
248	Fabrication & Supply of Ducting for Boiler	Others	2018-19	15	3,00,000	2,35,153	2,32,500
249	opening cwp as per details	CF - II	2018-19	15	8,69,93,827	6,80,76,245	6,74,20,216
250	MS Nut Bolt therad	CF - II	2018-19	10	75,000	59,276	52,500
251	Forbes Marshal CI Ball Steam	CF - II	2018-19	5	25,300	19,996	13,915
252	Foot SCR Dol	CF - II	2018-19	10	1,05,958	83,744	74,171
253	MS Fittings & Flanges	CF - II	2018-19	5	47,640	37,652	26,202
254	Ball & Buteerfly Valve	CF - II	2018-19	10	1,31,312	1,03,782	91,919
255	PTEF	CF - II	2018-19	10	2,11,667	1,67,291	1,48,167
256	Ball & Buteerfly Valve	CF - II	2018-19	10	1,65,062	1,30,457	1,15,544
257	KXGT	CF - II	2018-19	5	36,892	29,158	20,291
258	Hose Flanged	CF - II	2018-19	5	12,900	10,196	7,095
259	MS SMLS Pipes	CF - II	2018-19	10	1,04,346	82,470	73,042
260	MS Fittings & Flanges	CF - II	2018-19	5	20,980	16,582	11,539
261	Foot SCR Dol	CF - II	2018-19	10	1,20,807	95,480	84,565

S. No.	Description	Plant	Year of Capitalization	Residual Life (Yrs)	Gross Block as at 31.03.2023 (₹)	Net Block as at 31.03.2023 (₹)	Fair Market Value (₹)
262	Plate, Angles	CF - II	2018-19	15	4,47,347	3,53,560	3,46,694
263	Pressure Gauges	CF - II	2018-19	5	40,832	32,272	22,458
264	Paints	CF - II	2018-19	0	58,240	46,030	-
265	Cables	CF - II	2018-19	5	35,728	28,237	19,650
266	Pipe Flow Glass	CF - II	2018-19	10	27,100	21,418	18,970
267	Electricals	CF - II	2018-19	5	52,055	41,142	28,630
268	R-254 Reactor of 10m & R-255 Reactor of 10m for assembly	CF - II	2018-19	15	7,80,000	6,16,472	6,04,500
269	Nut bold	CF - II	2018-19	5	7,770	6,141	4,274
270	Electricals	CF - II	2018-19	5	36,691	28,999	20,180
271	CS Globe valves	CF - II	2018-19	10	55,000	43,469	38,500
272	CS Gate & Globe valves	CF - II	2018-19	10	1,36,100	1,07,567	95,270
273	S S Foundation bolt	CF - II	2018-19	5	11,420	9,026	6,281
274	Chilling Tank	CF - II	2018-19	15	98,000	77,454	75,950
275	CS Gate & Globe valves	CF - II	2018-19	10	99,000	78,245	69,300
276	Variable frequency drive	CF - II	2018-19	10	1,30,000	1,02,745	91,000
277	Temperature Indicator & Parameter Indicator	CF - II	2018-19	10	1,22,702	96,977	85,891
278	Glass Tube Rotameter	CF - II	2018-19	5	32,190	25,441	17,705
279	Brass Ferrule, CAP nut, Copper TEE	CF - II	2018-19	5	8,981	7,098	4,939
280	Coil	CF - II	2018-19	5	7,274	5,749	4,001
281	Electricals items	CF - II	2018-19	5	58,012	45,850	31,906
282	MS SMLS Pipes	CF - II	2018-19	10	27,564	21,786	19,295
283	MS Fittings & Flanges	CF - II	2018-19	5	18,880	14,922	10,384
284	MS Fittings & Flanges	CF - II	2018-19	10	1,50,308	1,18,796	1,05,215
285	FLP Push botton	CF - II	2018-19	5	29,670	23,450	16,319
286	Relay	CF - II	2018-19	5	1,559	1,232	857
287	Relay & Lugs	CF - II	2018-19	5	35,729	28,238	19,651
288	Relay & MCB	CF - II	2018-19	5	7,359	5,816	4,047
289	PTFE	CF - II	2018-19	5	20,188	15,955	11,103
290	Aluminium Indl. Cable	CF - II	2018-19	5	41,400	32,720	22,770
291	Copper Indl. Cable	CF - II	2018-19	10	91,131	72,026	63,792
292	Paints	CF - II	2018-19	0	5,320	4,205	-
293	MS Fittings & Flanges	CF - II	2018-19	5	25,070	19,814	13,789
294	SS Fitting	CF - II	2018-19	10	67,470	53,325	47,229
295	MS Nut bolt	CF - II	2018-19	5	6,930	5,477	3,812
296	SS SMLS Pipes	CF - II	2018-19	10	2,81,205	2,22,250	1,96,843
297	Agitator, VFD	CF - II	2018-19	15	2,88,085	2,27,688	2,23,266
298	Tubular Type Level Indicator	CF - II	2018-19	5	14,609	11,546	8,035
299	Transparent Tubular Level Gauge	CF - II	2018-19	5	16,330	12,906	8,982
300	Flush Botton ball valves & Flanged	CF - II	2018-19	10	27,000	21,339	18,900
301	Flush Botton ball valves & Flanged	CF - II	2018-19	10	78,000	61,647	54,600
302	MS SMLS Pipes	CF - II	2018-19	10	1,24,140	98,114	86,898
303	Copper Lugs	CF - II	2018-19	5	11,938	9,435	6,566



S. No.	Description	Plant	Year of Capitalization	Residual Life (Yrs)	Gross Block as at 31.03.2023 (₹)	Net Block as at 31.03.2023 (₹)	Fair Market Value (₹)
304	MS Fitting & Flanges	CF - II	2018-19	5	13,392	10,584	7,366
305	Insulation work	CF - II	2018-19	10	1,64,402	1,29,935	1,15,081
306	Insulation work	CF - II	2018-19	10	1,84,415	1,45,752	1,29,091
307	MS Basket	ANDS	2018-19	15	3,87,100	3,05,944	3,00,003
308	PP Flange, Stubend,	ANDS	2018-19	5	19,456	15,453	10,701
309	Tank	ANDS	2018-19	15	2,72,800	2,16,672	2,11,420
310	C S Sulphonator	ANDS	2018-19	15	9,00,000	7,15,648	6,97,500
311	C S Sulphonator	ANDS	2018-19	15	9,00,000	7,14,828	6,97,500
312	Lab equipments	R & D	2018-19	10	85,015	67,192	59,511
313	Lab Equipments	R & D	2018-19	10	1,78,595	1,41,152	1,25,017
314	Lab equipments	R & D	2018-19	10	85,015	67,535	59,511
315	Vaccum Pump	R & D	2018-19	10	60,000	47,718	42,000
316	Control Panal Board boiler	Others	2018-19	10	1,54,498	1,22,107	1,08,149
317	Control Panal Board boiler	Others	2018-19	15	7,00,000	5,53,245	5,42,500
318	Fondation Bolt	Others	2018-19	10	2,36,000	1,87,444	1,65,200
319	Erection and Commisioning of Boiler	Others	2018-19	Charges	1,00,000	79,595	-
320	Compressor	Nitrobenzen	2018-19	10	2,10,000	1,66,793	1,47,000
321	Wire Rope Electric hoist	MA - II	2018-19	10	2,26,243	1,79,694	1,58,370
322	VBD Blower, FRP Flanges, Damper	MA - II	2018-19	10	1,74,734	1,38,783	1,22,314
323	VBD Blower	MA - II	2018-19	10	1,08,290	86,010	75,803
324	VBD Blower, FRP Flanges, Damper	MA - II	2018-19	15	3,87,198	3,07,533	3,00,078
325	Foot SCR Dol	MA - II	2018-19	5	39,488	31,363	21,718
326	Reduction vessels	MA - II	2018-19	15	19,00,000	15,09,082	14,72,500
327	Motor	MA - II	2018-19	10	41,000	32,564	28,700
328	Blower Motor	MA - II	2018-19	10	7,011	5,569	4,908
329	Painting	MA - III	2018-19	0	1,07,426	85,323	-
330	Ball Valves	MAP - I	2018-19	10	1,23,991	98,480	86,794
331	HMD Kontro Pump	MAP - I	2018-19	10	8,79,599	6,98,625	6,15,719
332	Foot SCR Dol	MAP - I	2018-19	5	16,288	12,937	8,958
333	Foot SCR Dol	MAP - I	2018-19	10	1,10,636	87,873	77,445
334	Variable frequency drive	MAP - II	2018-19	10	70,000	55,324	49,000
335	Speed Controler	MAP - II	2018-19	5	27,340	21,608	15,037
336	Heat Tracer & Accessories	MAP - III	2018-19	15	4,54,300	3,59,056	3,52,083
337	As per separate work sheet	DBKA	2018-19	Building	3,53,90,861	2,85,19,216	-
338	As per separate work sheet	DBKA	2018-19	Building	1,00,06,723	81,04,144	-
339	Flowjet CS Y Strainer	CF - II	2018-19	5	30,228	24,249	16,625
340	Pressure Reduction Valves	CF - II	2018-19	10	1,48,998	1,19,525	1,04,298
341	Condensor -2nos	CF - II	2018-19	15	6,20,000	4,97,359	4,80,500
342	Junction Box, Coupler	CF - II	2018-19	10	78,476	62,953	54,933
343	Hand lamp, Vessel reactor lamp	CF - II	2018-19	15	71,520	57,373	55,428

S. No.	Description	Plant	Year of Capitalization	Residual Life (Yrs)	Gross Block as at 31.03.2023 (₹)	Net Block as at 31.03.2023 (₹)	Fair Market Value (₹)
344	Insulation working	CF - II	2018-19	15	3,03,903	2,43,788	2,35,524
345	Insulation Work	CF - II	2018-19	10	1,84,415	1,47,936	1,29,091
346	LED	CF - II	2018-19	0	44,560	35,908	-
347	MS Vertical Conical Tank	CF - II	2018-19	15	1,46,400	1,17,974	1,13,460
348	Pump	CF - II	2018-19	10	75,259	60,647	52,681
349	Flush bottom valve, Flanges	CF - II	2018-19	10	27,600	22,352	19,320
350	SS flush bottom ball valve	CF - II	2018-19	10	26,700	21,624	18,690
351	CS gate valve	CF - II	2018-19	10	47,000	38,064	32,900
352	SS flush bottom ball valve	CF - II	2018-19	10	68,000	55,071	47,600
353	Fabrication Erection of Piping	CF - II	2018-19	Charges	8,97,971	7,27,240	-
354	Pump	ETP	2018-19	10	32,343	26,063	22,640
355	Flanges	ETP	2018-19	5	16,840	13,570	9,262
356	Motor	ETP	2018-19	10	51,899	42,031	36,329
357	MS Flange, elbow	ETP	2018-19	10	64,908	52,567	45,436
358	Cognet P(CP) with disperent	ETP	2018-19	Negative Entry	10,50,000	-31,50,000	10,50,000
359	Ms Pipe, Flange, Bends	ETP	2018-19	10	1,71,050	1,38,528	1,19,735
360	SS flush bottom ball valve	ETP	2018-19	10	34,600	28,021	24,220
361	PPRP Coupler	ETP	2018-19	5	1,380	1,118	759
362	UV -VIS Spectrophotometer LAB EQUIPMENT	R & D	2018-19	15	3,10,000	1,87,359	2,40,250
363	Oleum Tank	MA	2018-19	15	5,30,000	4,25,162	4,10,750
364	Oleum Tank	MA	2018-19	15	5,30,000	4,25,162	4,10,750
365	Oleum Tank	MA	2018-19	15	5,30,000	4,25,162	4,10,750
366	Level Indicator	MA - II	2018-19	5	20,344	16,320	11,189
367	Filter Nutsche	MA - II	2018-19	15	6,40,000	5,13,403	4,96,000
368	PP/FRP ducting	MA - II	2018-19	10	1,15,640	93,653	80,948
369	Agitator Shaft for R14C/D	MA - II	2018-19	15	5,60,000	4,53,527	4,34,000
370	Thermowell	MAP - II	2018-19	10	1,00,000	80,584	70,000
371	Steam Booster	MAP - III	2018-19	10	1,20,000	96,263	84,000
372	Thermowell	MAP - III	2018-19	10	1,00,000	80,584	70,000
373	Pump	MAP - I	2018-19	10	30,116	24,269	21,081
374	Coupling	MAP - I	2018-19	5	1,684	1,357	926
375	Foot Scr Dol	MAP - I	2018-19	5	25,445	20,412	13,995
376	Metering Cubicle, Transformer SOLAR	Others	2018-19	10	1,99,000	1,61,164	1,39,300
377	Supply, Design and Erection of Solar Plant	Others	2018-19	Charges	5,13,60,000	4,15,94,916	-
378	Chimney for TFH	MAP - I	2018-19	10	1,48,990	1,20,663	1,04,293
379	Chimney for TFH	MAP - I	2018-19	10	2,46,280	1,99,455	1,72,396
380	Shell & Tube chiller	DBKA	2019-20	16	3,75,000	3,05,846	3,07,500

S. No.	Description	Plant	Year of Capitalization	Residual Life (Yrs)	Gross Block as at 31.03.2023 (₹)	Net Block as at 31.03.2023 (₹)	Fair Market Value (₹)
381	shaft seal, felt filter, expansion valve	DBKA	2019-20	11	25,698	20,984	19,530
382	Sight glass, Flanges	DBKA	2019-20	6	7,400	6,043	4,736
383	Sight glass, Flanges	CF - II	2019-20	6	19,700	16,114	12,608
384	MS Flanges, MS Bend	CF - II	2019-20	11	1,38,549	1,13,328	1,05,297
385	SS 316 Super Impellers	CF - II	2019-20	11	1,28,700	1,05,244	97,812
386	Gearbox	CF - II	2019-20	6	45,761	37,431	29,287
387	motor	CF - II	2019-20	11	59,334	48,533	45,094
388	wire braded flexible hoses	DBKA	2019-20	6	22,000	17,965	14,080
389	CS Pot Strainer flanged	CF - II	2019-20	11	68,000	55,622	51,680
390	CS Pot Strainer flanged	MEE	2019-20	6	49,000	1,812	31,360
391	felt filter, gasget set etc.	DBKA	2019-20	11	89,164	72,809	67,765
392	Supply of Plant materials	DBKA	2019-20	16	53,25,840	43,48,950	43,67,189
393	Flame proof wire rope	CF - II	2019-20	11	1,80,251	1,47,439	1,36,991
394	Micro Screw feeder Agitator	CF - II	2019-20	16	2,88,084	2,35,642	2,36,229
395	Agittor with shaft & lantern for reactor	CF - II	2019-20	16	3,52,000	2,87,923	2,88,640
396	Valve	MEE	2019-20	11	24,750	1,238	18,810
397	Ball Valve	MEE	2019-20	11	43,700	2,185	33,212
398	Copper Armound Cable	CF - II	2019-20	11	1,46,511	1,19,841	1,11,348
399	push button, power point	CF - II	2019-20	6	31,351	25,644	20,065
400	Pipe, fittings, flanges	CF - II	2019-20	11	83,547	68,338	63,496
401	Bolt & Nuts	MEE	2019-20	6	50,761	2,538	32,487
402	Everest coated sheet	DBKA	2019-20	Building	1,97,588	1,61,345	-
403	RTD Sensor Instrumentation cable signal	CF - II	2019-20	6	8,360	6,838	5,350
404	Dual display fpl temp. indicator digital based	CF - II	2019-20	6	20,520	16,785	13,133
405	CS body piston valve	CF - II	2019-20	11	9,669	7,909	7,348
406	Supply of Plant materials	DBKA	2019-20	16	14,73,423	12,03,161	12,08,207
407	M.S.Flanges	CF - II	2019-20	6	18,864	15,430	12,073
408	Flash bottom valves	CF - II	2019-20	11	29,700	24,294	22,572
409	MS Seampless Pipe	CF - II	2019-20	11	1,36,136	1,11,354	1,03,464
410	Wall mount fan, LED tube, cable fland	MEE	2019-20	0	14,900	745	-
411	LED Lamp	CF - II	2019-20	0	6,500	5,317	-
412	Cable gland	MEE	2019-20	Negative Entry	50,511	-16,932	50,511
413	Wll glass fitting, cable tie	CF - II	2019-20	6	42,470	34,739	27,181
414	Coper Armoured cable	MEE	2019-20	6	74,400	3,720	47,616
415	Sight glass	CF - II	2019-20	6	22,200	18,159	14,208
416	Vacum pump	DBKA	2019-20	11	1,10,000	89,823	83,600
417	Thermowell	MEE	2019-20	6	1,665	83	1,066
418	Manual Butterfly valve	DBKA	2019-20	11	12,413	10,136	9,434

S. No.	Description	Plant	Year of Capitalization	Residual Life (Yrs)	Gross Block as at 31.03.2023 (₹)	Net Block as at 31.03.2023 (₹)	Fair Market Value (₹)
419	Erection of machinery for DBKA	DBKA	2019-20	Charges	7,24,347	5,91,484	-
420	Erection of piping for DBKA	DBKA	2019-20	Charges	16,63,345	13,58,247	-
421	Civil work for DBKA	DBKA	2019-20	Building	11,42,127	10,02,788	-
422	CWIP DEMAP P&M	DEMAP	2019-20	16	2,35,875	1,94,988	1,93,418
423	CWIP DEMAP P&M	DEMAP	2019-20	16	23,700	19,592	19,434
424	G.I.Pipe	CF - II	2019-20	11	34,485	28,507	26,209
425	M.S.TMT Bar 16 MM	DEMAP	2019-20	6	44,550	36,828	28,512
426	FLP Glass Fitting	CF - II	2019-20	6	29,500	24,386	18,880
427	LED Lamp	CF - II	2019-20	0	6,500	5,373	-
428	Mechanical Seal	CF - II	2019-20	6	17,100	14,136	10,944
429	Vacuum Paddle Dryer	DEMAP	2019-20	16	40,00,000	33,06,630	32,80,000
430	MS Flanges	DEMAP	2019-20	6	26,650	22,030	17,056
431	MS Flanges	CF - II	2019-20	6	16,650	13,764	10,656
432	Flanges, Valves, Seamless, Trap	MEE	2019-20	11	4,73,480	3,91,406	3,59,845
433	S.S.Pipe	CF - II	2019-20	11	1,35,835	1,12,289	1,03,235
434	Flanges, Seamless Elbow	MEE	2019-20	11	2,01,048	1,66,198	1,52,796
435	M.S.Pipe	CF - II	2019-20	11	45,602	37,697	34,658
436	M.S.Short Bend	CF - II	2019-20	6	16,575	13,702	10,608
437	Vacuum Pump	DEMAP	2019-20	11	1,53,500	1,26,892	1,16,660
438	GI Pipe, MS Seamless Pipe	DEMAP	2019-20	11	2,02,017	1,66,999	1,53,533
439	M.S.Flanges, Seamless	DEMAP	2019-20	6	28,152	23,272	18,017
440	Bearing	DEMAP	2019-20	6	7,028	5,810	4,498
441	G.I.Socket Weld Flange	DEMAP	2019-20	6	20,300	16,781	12,992
442	S.S.Pipe Seamless	DEMAP	2019-20	11	88,500	73,159	67,260
443	Ball Valve	DEMAP	2019-20	11	72,700	60,098	55,252
444	VFD	DEMAP	2019-20	6	30,000	24,800	19,200
445	LED Lamp	DEMAP	2019-20	0	15,600	12,896	-
446	Aluminium Strip	DEMAP	2019-20	6	6,500	5,373	4,160
447	Hagar, Copper Flexible cable	DEMAP	2019-20	11	93,101	76,963	70,757
448	Pressure Gauges	DEMAP	2019-20	6	7,680	6,349	4,915
449	Pump	DEMAP	2019-20	11	15,943	13,179	12,117
450	Pipe, Seamless	DEMAP	2019-20	11	1,90,425	1,57,416	1,44,723
451	Thermodynamic steam trap	DEMAP	2019-20	6	13,613	11,253	8,712
452	CI Ball Float Steam Trap	DEMAP	2019-20	6	28,462	23,528	18,216
453	Nut Bold Thread, Plain Washer	DEMAP	2019-20	6	31,150	25,750	19,936
454	Needle Valve, Thermawell	DEMAP	2019-20	11	21,850	18,062	16,606
455	Dust Catcher with cages & Bag	DEMAP	2019-20	16	5,00,000	4,13,329	4,10,000
456	MS Seamless, Channel	DEMAP	2019-20	16	2,89,041	2,38,938	2,37,014
457	MS Beam	MA - III	2019-20	6	43,700	36,125	27,968
458	Ball Valve	DEMAP	2019-20	11	21,840	18,054	16,598

S. No.	Description	Plant	Year of Capitalization	Residual Life (Yrs)	Gross Block as at 31.03.2023 (₹)	Net Block as at 31.03.2023 (₹)	Fair Market Value (₹)
459	Pump	DEMAP	2019-20	11	36,857	30,468	28,011
460	Everest Sheet	DEMAP	2019-20	Building	17,796	14,711	-
461	S.S.Pipe	CF - II	2019-20	11	1,35,067	1,11,654	1,02,651
462	S.S.Pipe, Fitting Elbow	DEMAP	2019-20	11	3,74,861	3,09,841	2,84,895
463	M.S.Fitting Flange	DEMAP	2019-20	6	4,488	3,710	2,872
464	M.S.Fitting Flange	DEMAP	2019-20	6	7,332	6,061	4,692
465	Seamless Pipe	MEE	2019-20	11	7,390	6,109	5,616
466	Flexible Hose	DEMAP	2019-20	6	12,250	10,127	7,840
467	Tempresure Indicator	DEMAP	2019-20	6	24,130	19,947	15,443
468	PID Controller	DEMAP	2019-20	6	25,640	21,195	16,410
469	Cable Grand	MA - III	2019-20	6	6,407	5,296	4,100
470	Flame Proof Gland	DEMAP	2019-20	6	7,632	6,309	4,884
471	FR Cop Flex Cable	DEMAP	2019-20	6	2,616	2,162	1,674
472	M.S.Blind Flange	DEMAP	2019-20	6	7,050	5,828	4,512
473	S.S.Sheet	DEMAP	2019-20	Building	25,650	21,203	-
474	Hagar, Relay	Pilot	2019-20	11	95,494	79,265	72,575
475	Push botton, Terminal	Pilot	2019-20	6	19,079	15,837	12,211
476	Copper ARM Cable	MA - II	2019-20	16	5,18,760	4,30,599	4,25,383
477	S.S.Pipe	BBR	2019-20	11	43,80,000	36,35,640	33,28,800
478	Cable Tray	BBR	2019-20	16	6,36,750	5,28,537	5,22,135
479	Cable Tray	BBR	2019-20	16	4,77,000	3,95,936	3,91,140
480	S.S.Pipe	BBR	2019-20	11	27,63,000	22,93,441	20,99,880
481	S.S.Pipe	BBR	2019-20	11	20,16,000	16,73,390	15,32,160
482	Cable Tray	BBR	2019-20	16	5,93,250	4,93,080	4,86,465
483	Cable Tray	BBR	2019-20	16	7,19,250	5,97,884	5,89,785
484	FLP WII Glass Fitting & Push Botton station	BBR	2019-20	16	6,91,500	5,74,134	5,67,030
485	Well Glass Fitting & Cable Tray	DEMAP	2019-20	16	2,50,790	2,08,169	2,05,648
486	Valve Spares	DEMAP	2019-20	11	9,320	7,736	7,083
487	H.R.Coil/Sheet/Plate	BBR	2019-20	Building	1,70,610	1,51,428	-
488	Sequence Programming Timer	MAP - II	2019-20	6	14,326	11,902	9,169
489	H.R.Coil/Sheet/Plate/MS Angel	BBR	2019-20	Building	3,27,345	2,90,719	-
490	SMF Batteries	R & D	2019-20	11	1,36,500	1,13,572	1,03,740
491	Oleum Tank	MA - II	2019-20	16	5,30,000	4,41,207	4,34,600
492	Reduction Filter Nutsche	MA - II	2019-20	16	19,20,000	15,98,334	15,74,400
493	Oleum Tank	MA - III	2019-20	16	5,30,000	4,41,265	4,34,600
494	Oil Free Dental Air Compressor	ETP	2019-20	6	29,500	24,567	18,880
495	Civil Work	DEMAP	2019-20	Building	6,54,327	5,80,759	-
496	Synesthetic Enamel Painting	DBKA	2019-20	0	5,43,927	4,83,491	-
497	Fire Extinguisher OTHERS	Others	2019-20	6	35,000	29,217	22,400
498	Super Impeller	DEMAP	2019-20	16	3,00,000	2,50,266	2,46,000
499	Vaccum Transmitter	MA - III	2019-20	11	1,17,000	97,629	88,920
500	Centrifugal Blower Machine	Others	2019-20	11	85,500	71,270	64,980

S. No	Description	Plant	Year of Capitalization	Residual Life (Yrs)	Gross Block as at 31.03.2023 (₹)	Net Block as at 31.03.2023 (₹)	Fair Market Value (₹)
501	Fire Hydrant System OTHERS	Others	2019-20	6	58,440	48,713	37,402
502	Synthetic Enamel Painting	DBKA	2019-20	0	72,995	64,970	-
503	M.S.Flanges, Pipe, Elbow, TEE	BBR	2019-20	11	1,50,309	1,25,769	1,14,235
504	Temperature Indicator Controller	ETP	2019-20	6	35,262	29,509	22,568
505	S S Pipe, FLP Well Glass Fitting	BBR	2019-20	11	40,28,000	33,70,388	30,61,280
506	Manual Ball Valve	BBR	2019-20	11	52,040	43,544	39,550
507	LED Lamp	BBR	2019-20	0	7,776	6,506	-
508	Electrical PVC Conduit	BBR	2019-20	6	3,420	2,862	2,189
509	G.I.Pipe	BBR	2019-20	11	32,378	27,092	24,607
510	M.S.Flanges, Elbow Seamless	BBR	2019-20	6	18,927	15,837	12,113
511	M.S.Elbow Seamless	BBR	2019-20	6	2,025	1,694	1,296
512	M.S.Elbow Seamless, Flanges	BBR	2019-20	11	1,16,266	97,284	88,362
513	PPRC Reducer	BBR	2019-20	6	1,615	1,351	1,033
514	PPRC Flanges, Elbow	BBR	2019-20	6	7,263	6,077	4,648
515	M.S.Pipe Seamless	BBR	2019-20	11	1,67,570	1,40,212	1,27,353
516	Thermoking, Flanges, Reducer	BBR	2019-20	6	27,892	23,338	17,851
517	Manual, Globe Valve, Gate Valve	BBR	2019-20	11	56,070	46,916	42,613
518	RO water Purifier	Nitrobenzen	2019-20	16	5,25,000	4,39,346	4,30,500
519	Tubular Type Level Indicator	BBR	2019-20	6	24,176	20,261	15,473
520	Tubular Type Level Indicator	BBR	2019-20	6	12,294	10,303	7,868
521	Magnetic Type Level Indicator	BBR	2019-20	11	72,240	60,541	54,902
522	Float And Board Type Level Indicator	BBR	2019-20	6	14,236	11,931	9,111
523	Tubular Type Level Indicator	BBR	2019-20	6	5,950	4,986	3,808
524	Supply of MS Storage Tank, Measuring Vessel	BBR	2019-20	16	1,42,000	1,18,988	1,16,440
525	Manual Ball Valve	BBR	2019-20	11	33,260	27,830	25,278
526	M.S.Flanges, Tee Seamless	BBR	2019-20	6	1,371	1,147	877
527	Braided Flexible Hose Flanged	BBR	2019-20	6	1,900	1,590	1,216
528	Braided Flexible Hose Flanged	BBR	2019-20	6	20,150	16,867	12,896
529	CS Float trap Flanges	BBR	2019-20	6	15,100	12,635	9,664
530	Foot SCR Dol	BBR	2019-20	6	38,739	32,431	24,793
531	Flush Bottom Ball valve	BBR	2019-20	11	64,000	53,607	48,640
532	Flush Bottom Ball valve	BBR	2019-20	11	40,000	33,509	30,400



S. No.	Description	Plant	Year of Capitalization	Residual Life (Yrs)	Gross Block as at 31.03.2023 (₹)	Net Block as at 31.03.2023 (₹)	Fair Market Value (₹)
533	Foot SCR Dol	BBR	2019-20	11	68,213	57,159	51,842
534	Manual Butterfly Valve	BBR	2019-20	11	1,500	1,256	1,140
535	Pump	BBR	2019-20	11	32,764	27,425	24,900
536	Tank	BBR	2019-20	16	13,51,918	11,32,981	11,08,573
537	Seamless Reducer	BBR	2019-20	6	4,922	4,125	3,150
538	Pipes, Flanges, Reducible Tee, Elbows	BBR	2019-20	11	4,82,894	4,04,692	3,67,000
539	Horizontal Centrifugal End Suction Pump	BBR	2019-20	11	30,923	25,875	23,501
540	Tank	BBR	2019-20	16	45,000	37,712	36,900
541	Variable Frequency Drive	BBR	2019-20	11	62,000	51,912	47,120
542	FLP Push Button Station	BBR	2019-20	6	23,100	19,362	14,784
543	Flanges	BBR	2019-20	6	5,870	4,922	3,756
544	Slipon Flanges	BBR	2019-20	6	2,700	2,265	1,728
545	Cable	BBR	2019-20	6	49,275	41,333	31,536
546	Cable	BBR	2019-20	6	7,860	6,577	5,030
547	Laboratory Autoclave, Electrical Heating	R & D	2019-20	16	5,40,000	1,46,817	4,42,800
548	Bulb, Flameproof Indicator, Thermo Well	BBR	2019-20	6	12,105	10,170	7,747
549	Hex Nut Bolt	BBR	2019-20	6	52,790	44,351	33,786
550	Tank	BBR	2019-20	16	7,01,082	5,89,005	5,74,887
551	Valve	BBR	2019-20	11	16,575	13,926	12,597
552	Flange	BBR	2019-20	6	2,503	2,102	1,602
553	Pump, Hose, Cable	BBR	2019-20	11	1,26,291	1,06,102	95,981
554	Mother Liquor	BBR	2019-20	16	4,35,000	3,65,460	3,56,700
555	PVDF/FRP Elbows, coupler, Flanges	BBR	2019-20	11	97,151	81,620	73,835
556	M.S.Blind Flanges	BBR	2019-20	6	9,430	7,922	6,035
557	PTFE Corrugated Hose	BBR	2019-20	11	79,250	66,581	60,230
558	Chain Pulley Block	BBR	2019-20	6	7,800	6,553	4,992
559	Tabular Tube Level	BBR	2019-20	6	54,138	45,483	34,648
560	Carbon Molecular Seives	MAP - III	2019-20	11	80,960	68,026	61,530
561	FRV Blower	R & D	2019-20	6	34,400	28,901	22,016
562	Pressure Gauge, Braided Flexible	R & D	2019-20	6	36,955	31,047	23,651
563	Reverse entry	DBKA	2019-20	Negative Entry	-16,63,345	-16,63,345	-16,63,345
564	Centrifugal End Suction Pump	DBKA	2019-20	11	25,880	21,799	19,669
565	Bowl Lifting Cylinder	DEMAP	2019-20	6	26,200	22,069	16,768
566	PP Filter Press	ANDS	2019-20	16	4,99,950	4,21,670	4,09,959
567	Foot SCR Dol	DEMAP	2019-20	11	60,779	51,262	46,192
568	Centrifuge Machine	DEMAP	2019-20	16	31,03,500	26,20,289	25,44,870
569	S S Pipe, MS Flanges	BTCA	2019-20	11	1,65,959	1,40,428	1,26,128
570	Vacum Oven	R & D	2019-20	11	1,12,000	94,623	85,120
571	Valve, Fine filter elements	MAP - III	2019-20	11	1,75,840	1,48,886	1,33,638

S. No.	Description	Plant	Year of Capitalization	Residual Life (Yrs)	Gross Block as at 31.03.2023 (₹)	Net Block as at 31.03.2023 (₹)	Fair Market Value (₹)
572	VFD	MAP - III	2019-20	6	31,000	26,248	19,840
573	VFD	MAP - III	2019-20	11	72,000	60,963	54,720
574	Ball Valve	BTCA	2019-20	11	1,85,510	1,57,074	1,40,988
575	Piston Valve	Pilot	2019-20	11	2,37,365	2,01,006	1,80,398
576	Ball Valve, Strainer	Pilot	2019-20	11	33,140	28,064	25,186
577	Oleum Tank	MA - III	2019-20	16	5,30,000	4,48,816	4,34,600
578	Oleum Tank	MA - III	2019-20	16	5,30,000	4,48,816	4,34,600
579	Flexible Hose	BTCA	2019-20	11	95,000	80,490	72,200
580	Axpert-Eazy	DBKA	20-21	12	1,22,500	1,05,928	1,00,450
581	MSGJ Jacketed Reactor	DBKA	20-21	17	9,00,000	7,83,487	7,78,500
582	FLP SCR DOL	CF - II	20-21	12	95,222	82,529	78,082
583	HDPE Tank	DBKA	20-21	17	2,73,500	2,38,316	2,36,578
584	VFD	DBKA	20-21	7	31,000	27,008	22,630
585	Pipe, Elbow, Valve, stubend, Coupler	DBKA	20-21	12	29,807	25,972	24,442
586	Flush Bottom Ball Valve, Flanges	DBKA	20-21	12	49,638	43,218	40,703
587	Supply of Trough	DBKA	20-21	17	2,70,000	2,34,417	2,33,550
588	Digital Display KIT	R & D	20-21	12	1,54,378	1,35,201	1,26,590
589	Lamp	R & D	20-21	7	53,390	46,882	38,975
590	Fire Hydrant Sysytem	Nitrobenzen	20-21	17	3,43,020	3,03,925	2,96,712
591	Split Vent	R & D	20-21	7	22,410	17,135	16,359
592	Fire Hydrant System	Others	20-21	12	2,28,680	2,03,442	1,87,518
593	JSB Vehicel	P&M	21-22	18	25,00,000	21,05,251	22,75,000
594	HP-Innow	R & D	21-22	13	79,134	75,406	69,638
595	PVDF/FRV SINK	R & D	21-22	13	55,000	52,566	48,400
596	Strapping Machine	OTHERS	21-22	13	1,55,000	1,48,949	1,36,400
597	Pallet Stretch Wrapping Machine	OTHERS	21-22	18	5,45,000	5,23,723	4,95,950
598	Fabrication Work	DBKA	21-22	18	14,73,423	14,44,681	13,40,815
599	Fabrication & Rubber Lining	MA	21-22	13	1,74,705	1,71,297	1,53,740
600	Fabrication & Rubber Lining	MA	21-22	13	1,04,434	1,02,397	91,902
601	Fabrication & Rubber Lining	MA	21-22	8	30,590	29,993	25,084
602	GC Column	QC	22-23	14	59,500	57,378	55,930
603	Civil Work	MA-III	22-23	Building	3,17,934	3,06,763	-
604	Batteries	QC	22-23	14	1,82,750	1,77,232	1,71,785
605	UPS	R&D	22-23	9	3,81,943	3,77,420	3,47,568
606	Exaust Blower	MAP-II & II	22-23	19	2,91,200	2,85,895	2,78,096
607	Valve	ETP	22-23	14	1,95,000	1,93,503	1,83,300
608	Auto Sampler	ETP	22-23	14	55,000	54,578	51,700
609	Intersil ODS-2	R & D	22-23	14	83,410	83,073	78,405
610	MACP Washing Tank	MAP-III	22-23	19	7,00,000	6,99,271	6,68,500
611	PPRC elbow	PAP	22-23	14	2,28,599	2,27,260	2,14,883
612	Garvity Separators	PAP	22-23	19	8,51,601	8,46,614	8,13,279
613	Flowmeter Model	PAP	22-23	19	3,16,689	3,14,835	3,02,438
614	Boiler Stay Tubes	PAP	22-23	19	2,93,802	2,92,082	2,80,581
615	Wire Braided	PAP	22-23	14	65,201	64,819	61,289



S. No.	Description	Plant	Year of Capitalization	Residual Life (Yrs)	Gross Block as at 31.03.2023 (₹)	Net Block as at 31.03.2023 (₹)	Fair Market Value (₹)
616	Hydraulically Operated Agitated Nutsche Filter	PAP	22-23	19	77,14,352	76,69,176	73,67,206
617	PTFE	PAP	22-23	19	4,43,500	4,40,903	4,23,543
618	PTFE	PAP	22-23	14	1,15,433	1,14,757	1,08,507
619	Centerfuge Spares	PAP	22-23	9	2,19,553	2,18,268	1,99,794
620	Centrifuge Pumpe	PAP	22-23	14	2,39,875	2,38,470	2,25,482
621	Gravity Sperator	PAP	22-23	14	1,86,288	1,85,197	1,75,110
622	Thick CRB with Aluminium Sheet fixing work	PAP	22-23	Building	1,81,326	1,80,264	-
623	Motor	PAP	22-23	14	8,46,279	8,41,323	7,95,502
624	Motor	PAP	22-23	14	8,46,279	8,41,323	7,95,502
625	GLASS LINE EQUIOMENT	PAP	22-23	19	51,14,488	50,84,536	48,84,336
626	GLASS LINE EQUIOMENT	PAP	22-23	19	51,14,488	50,84,536	48,84,336
627	GLASS LINE EQUIOMENT	PAP	22-23	19	51,14,488	50,84,536	48,84,336
628	Glass Line Reactors	PAP	22-23	19	16,87,781	16,77,897	16,11,831
629	Glass Line Reactors	PAP	22-23	19	24,29,382	24,15,155	23,20,059
630	Glass Line Reactors	PAP	22-23	19	26,25,437	26,10,062	25,07,292
631	Boiler Plain Tube	PAP	22-23	19	11,20,073	11,13,513	10,69,670
632	Cable Tiles	PAP	22-23	14	55,817	55,490	52,468
633	Reactor	PAP	22-23	19	51,14,488	50,84,536	48,84,336
634	Reactor	PAP	22-23	19	51,14,488	50,84,536	48,84,336
635	Halogen Tube	PAP	22-23	9	33,013	32,820	30,042
636	H P Sheets	PAP	22-23	Building	46,532	46,260	-
637	FILTER FABRIC	PAP	22-23	14	53,461	53,148	50,253
638	Key Bar	PAP	22-23	9	34,870	34,666	31,732
639	Cylinder With Liner Code	PAP	22-23	14	59,878	59,528	56,286
640	Bright Bar	PAP	22-23	9	10,901	10,837	9,920
641	Portable Fire Extingusher	PAP	22-23	9	48,967	48,680	44,560
642	Sparger	PAP	22-23	19	3,72,575	3,70,394	3,55,810
643	Buffer Solution	PAP	22-23	9	31,484	31,300	28,651
644	PCB Relay Card	PAP	22-23	9	25,681	25,531	23,370
645	G I Bucket	PAP	22-23	9	17,656	17,553	16,067
646	Scavanger Sulphide Base	PAP	22-23	9	39,520	39,288	35,963
647	Bellow For Akay Pump Model	PAP	22-23	14	20,226	20,107	19,012
648	Carbon Seal Ring of multispring	PAP	22-23	14	69,193	68,787	65,041
649	Modular Switch	PAP	22-23	9	47,902	47,622	43,591
650	Copper Flexi Cable	PAP	22-23	14	64,156	63,780	60,306
651	Polpular Gear Pump	PAP	22-23	14	19,294	19,181	18,136
652	Glass Handel	PAP	22-23	9	44,589	44,328	40,576
653	Glass Handel	PAP	22-23	9	15,528	15,437	14,131



S. No.	Description	Plant	Year of Capitalization	Residual Life (Yrs)	Gross Block as at 31.03.2023 (₹)	Net Block as at 31.03.2023 (₹)	Fair Market Value (₹)
654	COD, BOD & TSS Sensor	PAP	22-23	19	15,34,351	15,25,366	14,65,306
655	Bouls	PAP	22-23	19	3,48,966	3,46,923	3,33,263
656	Optical Window	PAP	22-23	14	1,03,004	1,02,401	96,824
657	Horizontal Centrifugal Pump	PAP	22-23	14	92,026	91,487	86,505
658	Hose Clamp	PAP	22-23	9	23,194	23,058	21,107
659	Dunlop Super Chemical Hose	PAP	22-23	9	43,358	43,104	39,456
660	Bearing	PAP	22-23	9	31,876	31,689	29,007
661	Air Compressor	PAP	22-23	19	47,73,522	47,45,567	45,58,713
662	Control Panel	PAP	22-23	14	2,03,378	2,02,187	1,91,175
663	Change Over Valve	PAP	22-23	14	2,15,422	2,14,161	2,02,497
664	Column	PAP	22-23	19	1,67,07,156	1,66,09,316	1,59,55,334
665	Corrugated Boxes	PAP	22-23	19	2,72,778	2,71,181	2,60,503
666	Motor	PAP	22-23	14	2,48,854	2,47,397	2,33,923
667	Motor	PAP	22-23	14	96,783	96,216	90,976
668	Motor	PAP	22-23	14	2,50,985	2,49,515	2,35,926
669	Motor	PAP	22-23	14	2,42,512	2,41,092	2,27,961
670	Used Jackted MSGL	PAP	22-23	19	21,56,609	21,43,979	20,59,562
671	Centerfuge Spares	PAP	22-23	9	7,10,488	7,06,327	6,46,544
672	Impleers	PAP	22-23	14	1,72,529	1,71,518	1,62,177
673	Impleers	PAP	22-23	19	4,95,082	4,92,183	4,72,804
674	Impleers	PAP	22-23	19	2,85,047	2,83,378	2,72,220
675	Impleers	PAP	22-23	19	4,20,070	4,17,610	4,01,167
676	Impleers	PAP	22-23	19	6,22,604	6,18,958	5,94,586
677	M S Angels	PAP	22-23	14	1,89,813	1,88,701	1,78,424
678	Transportation Charges	PAP	22-23	Charges	52,286	51,979	-
679	PTFE	PAP	22-23	19	10,53,382	10,47,213	10,05,980
680	Transportation Charges	PAP	22-23	Charges	3,27,194	3,25,278	-
681	Steel	PAP	22-23	19	28,47,721	28,31,044	27,19,573
682	HDPE Tank	PAP	22-23	19	1,73,893	1,72,874	1,66,067
683	HDPE Tank	PAP	22-23	19	11,88,266	11,81,307	11,34,794
684	Engineering Work	PAP	22-23	19	7,48,478	7,44,094	7,14,796
685	LHP	PAP	22-23	19	4,94,571	4,91,675	4,72,315
686	Crompton	PAP	22-23	19	3,72,863	3,70,680	3,56,084
687	Flame Arrestor	PAP	22-23	14	1,87,299	1,86,202	1,76,061
688	Transportation Charges	PAP	22-23	Charges	1,85,622	1,84,535	-
689	Distillation Column	PAP	22-23	19	10,22,898	10,16,907	9,76,867
690	High Vaccum Pump	PAP	22-23	14	9,28,279	9,22,843	8,72,583
691	Tank	PAP	22-23	19	15,17,298	15,08,412	14,49,020
692	Transportation Charges	PAP	22-23	Charges	37,258	37,039	-
693	Transportation Charges	PAP	22-23	Charges	82,492	82,009	-
694	Transportation Charges	PAP	22-23	Charges	1,33,133	1,32,354	-
695	Transportation Charges	PAP	22-23	Charges	78,413	77,953	-
696	Transportation Charges	PAP	22-23	Charges	3,96,777	3,94,453	-
697	Transportation Charges	PAP	22-23	Charges	1,17,321	1,16,634	-
698	Transportation Charges	PAP	22-23	Charges	41,967	41,721	-
699	Dessicated Interized Container	PAP	22-23	19	37,19,085	36,97,305	35,51,726



S. No.	Description	Plant	Year of Capitalization	Residual Life (Yrs)	Gross Block as at 31.03.2023 (₹)	Net Block as at 31.03.2023 (₹)	Fair Market Value (₹)
700	Flush Bottom Valve	PAP	22-23	14	3,71,857	3,69,680	3,49,546
701	Steel	PAP	22-23	19	19,12,494	19,01,295	18,26,432
702	HR Coil, GPA Plates	PAP	22-23	19	4,23,906	4,21,423	4,04,830
703	Transportation Charges	PAP	22-23	Charges	1,96,575	1,95,424	-
704	Transportation Charges	PAP	22-23	Charges	42,621	42,371	-
705	Storage Tank	PAP	22-23	19	7,67,173	7,62,680	7,32,650
706	Steel	PAP	22-23	19	9,35,005	9,29,530	8,92,930
707	Pipe, Flanges	PAP	22-23	14	2,31,036	2,29,683	2,17,174
708	M S Round	PAP	22-23	14	73,856	73,423	69,424
709	SS SMLS Pipe	PAP	22-23	14	12,11,758	12,04,662	11,39,053
710	MS Plate	PAP	22-23	14	95,339	94,781	89,619
711	M S Surf Blind Flange	PAP	22-23	9	46,106	45,836	41,957
712	S S Fitting, Flange	PAP	22-23	19	2,78,720	2,77,088	2,66,177
713	S S SMLS Pipe	PAP	22-23	14	2,76,438	2,74,819	2,59,851
714	M S Round	PAP	22-23	14	71,465	71,047	67,177
715	Transportation Charges	PAP	22-23	Charges	4,84,163	4,81,328	-
716	Transportation Charges	PAP	22-23	Charges	3,54,279	3,52,205	-
717	Transportation Charges	PAP	22-23	Charges	1,02,152	1,01,554	-
718	Nitrogen Oxide Gas Detector	PAP	22-23	19	2,79,432	2,77,795	2,66,857
719	Weighing Scale	PAP	22-23	14	2,21,217	2,19,921	2,07,944
720	Differential Pressure Transmitter	PAP	22-23	9	43,695	43,439	39,763
721	Transportation Charges	PAP	22-23	Charges	33,266	33,071	-
722	M S Round	PAP	22-23	14	59,633	59,284	56,055
723	CRI Tube	PAP	22-23	19	10,22,042	10,16,056	9,76,050
724	CCI Tube	PAP	22-23	19	10,22,042	10,16,056	9,76,050
725	HR Coil	PAP	22-23	19	4,74,710	4,71,930	4,53,348
726	Ansi B 16.5 Sorf	PAP	22-23	14	95,206	94,649	89,494
727	Ansi B 16.9 Elbow	PAP	22-23	14	1,96,966	1,95,813	1,85,148
728	M S Round	PAP	22-23	14	67,330	66,935	63,290
729	HR Coil, GI Tube	PAP	22-23	19	5,90,543	5,87,085	5,63,969
730	HR Coil, M S Round	PAP	22-23	19	3,27,276	3,25,359	3,12,549
731	GI Tube	PAP	22-23	19	11,56,275	11,49,503	11,04,242
732	Agitated Nutch Filter	PAP	22-23	19	1,46,85,399	1,45,99,399	1,40,24,556
733	Multi Effect Evaporation System	PAP	22-23	19	2,20,28,098	2,18,99,098	2,10,36,834
734	Transportation Charges	PAP	22-23	Charges	86,491	85,984	-
735	Transportation Charges	PAP	22-23	Charges	6,35,847	6,32,123	-
736	Agitated Nutch Filter	PAP	22-23	19	1,46,85,399	1,45,99,399	1,40,24,556
737	Reactor	PAP	22-23	19	4,12,386	4,09,971	3,93,829
738	Metering Pump Tag, MOD	PAP	22-23	14	15,96,573	15,87,223	15,00,778
739	LED Light	PAP	22-23	3	40,318	40,082	31,246
740	LED Light	PAP	22-23	3	37,284	37,066	28,895
741	Gearbox	PAP	22-23	19	2,60,735	2,59,208	2,49,002
742	Gearbox	PAP	22-23	14	67,571	67,175	63,517
743	Gearbox	PAP	22-23	19	2,59,882	2,58,361	2,48,188
744	Storage Tank	PAP	22-23	19	7,67,173	7,62,680	7,32,650
745	Pole MCB, Connectwell	PAP	22-23	14	1,73,997	1,72,978	1,63,557

S. No.	Description	Plant	Year of Capitalization	Residual Life (Yrs)	Gross Block as at 31.03.2023 (₹)	Net Block as at 31.03.2023 (₹)	Fair Market Value (₹)
746	Water Cooler	PAP	22-23	14	1,07,581	1,06,951	1,01,126
747	SS Center Feeder Screw	PAP	22-23	14	84,362	83,868	79,300
748	PTFE Corrugated	PAP	22-23	9	39,919	39,685	36,326
749	Wire Braided	PAP	22-23	14	1,90,147	1,89,033	1,78,738
750	Barrel Pum	PAP	22-23	19	7,46,715	7,42,342	7,13,113
751	Gearbox	PAP	22-23	14	1,52,175	1,51,284	1,43,044
752	Magnetic Flow Meter	PAP	22-23	9	41,316	41,074	37,598
753	Supply of Air Egg	PAP	22-23	14	53,225	52,913	50,032
754	Centrifuge Spares	PAP	22-23	9	20,41,362	20,29,408	18,57,640
755	Ignation Wire	PAP	22-23	14	2,27,697	2,26,364	2,14,036
756	CAP	PAP	22-23	14	79,838	79,370	75,047
757	Flat Head Screw	PAP	22-23	14	87,516	87,003	82,265
758	Engineering Services	PAP	22-23	19	11,50,760	11,44,021	10,98,976
759	Transportation Charges	PAP	22-23	Charges	86,491	85,984	-
760	Transportation Charges	PAP	22-23	Charges	57,417	57,080	-
761	GST Amount reverse which was include in cost	PAP	22-23	Negative Entry	-33,60,218	-33,40,540	-33,60,218
762	GST Amount reverse which was include in cost	PAP	22-23	Negative Entry	-22,40,146	-22,27,027	-22,40,146
763	GST Amount reverse which was include in cost	PAP	22-23	Negative Entry	-22,40,146	-22,27,027	-22,40,146
764	Transformer	PAP	22-23	9	25,415	25,266	23,128
765	LED Light	PAP	22-23	3	39,240	39,010	30,411
766	Evaporation System	PAP	22-23	19	38,35,866	38,13,402	36,63,252
767	Agitated Nutsche Filter	PAP	22-23	19	1,24,45,253	1,23,72,372	1,18,85,217
768	M S Round	PAP	22-23	9	48,211	47,929	43,872
769	Evaporation System	PAP	22-23	19	56,25,936	55,92,990	53,72,769
770	Transportation Charges	PAP	22-23	Charges	1,13,928	1,13,261	-
771	Transportation Charges	PAP	22-23	Charges	86,491	85,984	-
772	Pressure Transmitter	PAP	22-23	14	79,372	78,907	74,610
773	Transportation Charges	PAP	22-23	Charges	57,417	57,080	-
774	Transportation Charges	PAP	22-23	Charges	50,763	50,466	-
775	Transportation Charges	PAP	22-23	Charges	5,58,364	5,55,094	-
776	Transportation Charges	PAP	22-23	Charges	4,20,265	4,17,804	-
777	Screw Chiller	PAP	22-23	19	43,04,694	42,79,485	41,10,983
778	Transportation Charges	PAP	22-23	Charges	42,580	42,331	-
779	Reactor Vessel	PAP	22-23	19	80,87,710	80,40,347	77,23,763
780	Transportation Charges	PAP	22-23	Charges	86,491	85,984	-
781	Transportation Charges	PAP	22-23	Charges	65,375	64,992	-
782	Transportation Charges	PAP	22-23	Charges	2,42,794	2,41,372	-
783	Transportation Charges	PAP	22-23	Charges	1,46,805	1,45,946	-
784	Transportation Charges	PAP	22-23	Charges	82,492	82,009	-
785	HDPE Tank	PAP	22-23	19	11,88,266	11,81,307	11,34,794
786	PPRC Pipe, PPRC Elbow	PAP	22-23	14	1,37,943	1,37,135	1,29,666
787	B/W Ansi	PAP	22-23	19	6,06,263	6,02,712	5,78,981



S No.	Description	Plant	Year of Capitalization	Residual Life (Yrs)	Gross Block as at 31.03.2023 (₹)	Net Block as at 31.03.2023 (₹)	Fair Market Value (₹)
788	Channel, Tube, Pipe	PAP	22-23	14	3,49,233	3,47,187	3,28,279
789	Channel Plate, Sheets	PAP	22-23	Building	8,77,931	8,72,790	-
790	Motor	PAP	22-23	14	6,41,408	6,37,652	6,02,923
791	B/W Ansi	PAP	22-23	14	1,07,643	1,07,013	1,01,184
792	B/W Ansi	PAP	22-23	14	1,35,745	1,34,950	1,27,601
793	GI Tube	PAP	22-23	19	10,13,538	10,07,603	9,67,929
794	M S Angel	PAP	22-23	9	45,345	45,080	41,264
795	Splash Guard	PAP	22-23	14	1,53,186	1,52,289	1,43,995
796	Valve	PAP	22-23	14	94,514	93,961	88,844
797	Minimax Pump	PAP	22-23	14	19,959	19,843	18,762
798	Worm Wheel	PAP	22-23	9	23,951	23,811	21,796
799	Worm Gear Shift	PAP	22-23	9	25,814	25,663	23,491
800	Chemical Process Pump	PAP	22-23	14	10,00,078	9,94,222	9,40,074
801	Engineering Services	PAP	22-23	19	13,42,553	13,34,691	12,82,138
802	Transportation Charges	PAP	22-23	Charges	29,069	28,899	-
803	Nut Bolt	PAP	22-23	19	3,16,476	3,14,623	3,02,235
804	Refractory Bonding	PAP	22-23	14	85,036	84,538	79,934
805	Flanges	PAP	22-23	19	2,96,131	2,94,397	2,82,805
806	Transportation Charges	PAP	22-23	Charges	23,951	23,811	-
807	Transportation Charges	PAP	22-23	Charges	35,927	35,717	-
808	Aluminium Cladding Fixing Work	PAP	22-23	14	2,38,455	2,37,059	2,24,148
809	Pipe	PAP	22-23	14	70,012	69,602	65,812
810	pipe, Nut Bolt	PAP	22-23	14	11,82,392	11,75,468	11,11,449
811	S/W Ansi	PAP	22-23	19	3,11,251	3,09,428	2,97,244
812	Pipe	PAP	22-23	14	3,88,104	3,85,832	3,64,818
813	Angel DDKI Coated Coil	PAP	22-23	14	2,32,214	2,30,854	2,18,281
814	Coil	PAP	22-23	14	75,952	75,507	71,395
815	pipe, Nut Bolt	PAP	22-23	14	4,59,931	4,57,238	4,32,335
816	Angel	PAP	22-23	19	5,26,799	5,23,714	5,03,093
817	Angel	PAP	22-23	19	4,20,292	4,17,830	4,01,379
818	M S Beam, M S Channel	PAP	22-23	19	6,45,417	6,41,637	6,16,373
819	Piep	PAP	22-23	14	2,44,084	2,42,654	2,29,439
820	Transportation Charges	PAP	22-23	Charges	1,29,071	1,28,315	-
821	Transportation Charges	PAP	22-23	Charges	53,225	52,913	-
822	Transportation Charges	PAP	22-23	Charges	9,88,411	9,82,622	-
823	pipe, Nut Bolt	PAP	22-23	14	50,417	50,122	47,392
824	Pipe	PAP	22-23	14	1,91,284	1,90,164	1,79,807
825	Pipe	PAP	22-23	14	2,54,842	2,53,349	2,39,551
826	Transportation Charges	PAP	22-23	Charges	5,08,753	5,05,774	-
827	Wire Braided	PAP	22-23	14	65,201	64,819	61,289
828	Wire Braided	PAP	22-23	19	2,67,456	2,65,890	2,55,420
829	Pipe	PAP	22-23	14	1,01,290	1,00,697	95,213
830	Measuring Vessel	PAP	22-23	19	7,53,535	7,49,122	7,19,625
831	Multi Evaporation System	PAP	22-23	19	68,19,317	67,79,382	65,12,448
832	MS Glass lined Reactors	PAP	22-23	19	52,50,874	52,20,124	50,14,585
833	Glass Colum Assembly	PAP	22-23	19	1,00,58,492	99,99,588	96,05,860
834	MS Glass lined Reactors	PAP	22-23	19	22,79,357	22,66,008	21,76,786

S. No.	Description	Plant	Year of Capitalization	Residual Life (Yrs)	Gross Block as at 31.03.2023 (₹)	Net Block as at 31.03.2023 (₹)	Fair Market Value (₹)
835	Storage Tank	PAP	22-23	19	51,99,729	51,69,279	49,65,741
836	Measuring Vessel	PAP	22-23	19	19,90,407	19,78,751	19,00,839
837	Foundation Bolt	PAP	22-23	19	44,91,274	44,64,972	42,89,166
838	Measuring Vessel	PAP	22-23	19	15,54,298	15,45,196	14,84,354
839	Horizontal Receiver	PAP	22-23	19	14,35,466	14,27,060	13,70,870
840	Reactor Vessel	PAP	22-23	19	13,97,960	13,89,773	13,35,052
841	Reactor Vessel	PAP	22-23	19	35,80,141	35,59,175	34,19,035
842	Transportation Charges	PAP	22-23	Charges	97,175	96,606	-
843	Transportation Charges	PAP	22-23	Charges	25,743	25,592	-
844	Transportation Charges	PAP	22-23	Charges	1,36,386	1,35,588	-
845	MS Glass lined Reactors	PAP	22-23	19	26,25,437	26,10,062	25,07,292
846	SMLS Pipe	PAP	22-23	14	5,43,689	5,40,505	5,11,067
847	SMLS Pipe	PAP	22-23	14	16,17,779	16,08,305	15,20,712
848	Storage Tank	PAP	22-23	19	23,18,568	23,04,990	22,14,232
849	Galvansed Gratings	PAP	22-23	19	3,73,017	3,70,832	3,56,231
850	M S Plate, M S Angel, M S Beam	PAP	22-23	19	20,67,416	20,55,309	19,74,382
851	Transportation Charges	PAP	22-23	Charges	27,943	27,780	-
852	Transportation Charges	PAP	22-23	Charges	46,572	46,299	-
853	MS Glass lined Reactors	PAP	22-23	19	45,34,846	45,08,289	43,30,778
854	Transformer	PAP	22-23	19	43,47,314	43,21,856	41,51,685
855	Transportation Charges	PAP	22-23	Charges	2,38,049	2,36,655	-
856	Safety Plate, Counter Weight, Union Screw	PAP	22-23	19	3,59,535	3,57,430	3,43,356
857	Pressure Control Systems	PAP	22-23	19	13,36,586	13,28,759	12,76,440
858	Greaves	PAP	22-23	19	94,10,657	93,55,547	89,87,178
859	Transportation Charges	PAP	22-23	Charges	51,894	51,591	-
860	GST Reversal of PPN Enetrprises	PAP	22-23	14	1,75,437	1,74,410	1,64,911
861	Fabrication & Erection Work	PAP	22-23	Charges	1,77,619	1,76,579	-
862	Fabrication & Erection Work	PAP	22-23	Charges	3,89,332	3,87,052	-
863	Fabrication & Erection Work	PAP	22-23	Charges	4,77,783	4,74,986	-
864	Fabrication & Erection Work	PAP	22-23	Charges	7,34,580	7,30,278	-
865	Dimenarlised water plant	PAP	22-23	19	13,21,243	13,13,505	12,61,787
866	Distillation Column	PAP	22-23	19	11,59,284	11,52,495	11,07,116
867	Storage Tank	PAP	22-23	19	7,50,125	7,45,732	7,16,369
868	M S Hot & Cold Well Tank	PAP	22-23	19	4,68,828	4,66,082	4,47,731
869	PTEF	PAP	22-23	19	2,66,358	2,64,798	2,54,372
870	Receiver	PAP	22-23	19	2,60,803	2,59,276	2,49,067
871	Reboiler	PAP	22-23	19	25,99,865	25,84,639	24,82,871
872	Condensors	PAP	22-23	14	2,47,209	2,45,761	2,32,376
873	M S Storage Tank	PAP	22-23	19	23,18,610	23,05,032	22,14,273
874	Receiver S S Tank	PAP	22-23	19	19,77,607	19,66,026	18,88,615
875	Foundation Bolt	PAP	22-23	14	1,82,076	1,81,009	1,71,151



S. No.	Description	Plant	Year of Capitalization	Residual Life (Yrs)	Gross Block as at 31.03.2023 (₹)	Net Block as at 31.03.2023 (₹)	Fair Market Value (₹)
876	Measuring Vessel	PAP	22-23	19	89,418	88,894	85,394
877	Four POL MCB, XLPE COP.ARM Cable	PAP	22-23	14	1,57,764	1,56,841	1,48,299
878	OT Battery, Position Selector	PAP	22-23	9	17,649	17,546	16,061
879	PVC COP Flex Cable	PAP	22-23	14	1,05,117	1,04,501	98,810
880	Storage Tank	PAP	22-23	19	1,65,368	1,64,400	1,57,927
881	Transportation Charges	PAP	22-23	Charges	10,645	10,583	-
882	Transportation Charges	PAP	22-23	Charges	46,572	46,299	-
883	Transportation Charges	PAP	22-23	Charges	13,972	13,890	-
884	Transportation Charges	PAP	22-23	Charges	599	595	-
885	Transportation Charges	PAP	22-23	Charges	498	495	-
886	Transportation Charges	PAP	22-23	Charges	18,629	18,520	-
887	Transportation Charges	PAP	22-23	Charges	2,784	2,767	-
888	Transportation Charges	PAP	22-23	Charges	1,30,401	1,29,638	-
889	Transportation Charges	PAP	22-23	Charges	33,266	33,071	-
890	Transportation Charges	PAP	22-23	Charges	70,523	70,110	-
891	Galvanised	PAP	22-23	14	1,31,732	1,30,961	1,23,828
892	Reactor Vessel, Agitator	PAP	22-23	19	14,74,677	14,66,041	14,08,317
893	Receiver	PAP	22-23	19	14,66,153	14,57,567	14,00,176
894	Switch Porcelain, Ofuse Set	PAP	22-23	14	1,06,982	1,06,356	1,00,563
895	Heat Exchanger	PAP	22-23	14	1,06,450	1,05,827	1,00,063
896	HDPE Storage Tank	PAP	22-23	19	8,30,252	8,25,390	7,92,890
897	Armd Cable With Copper Conductor	PAP	22-23	19	6,94,587	6,90,519	6,63,330
898	GI Strip	PAP	22-23	19	4,79,445	4,76,637	4,57,870
899	Armed Cable With Copper Conductor	PAP	22-23	19	53,47,732	53,16,415	51,07,084
900	Reactor Vessel	PAP	22-23	19	52,42,350	52,11,650	50,06,444
901	Pressuer Reducing Valve	PAP	22-23	14	5,11,449	5,08,454	4,80,762
902	S S Tank Receiver	PAP	22-23	19	2,96,730	2,94,992	2,83,377
903	Agitator	PAP	22-23	19	21,48,085	21,35,505	20,51,421
904	Round FRLS	PAP	22-23	19	18,85,706	18,74,663	18,00,850
905	S S Tank Receiver	PAP	22-23	19	17,47,467	17,37,234	16,68,831
906	Transportation Charges	PAP	22-23	Charges	776	771	-
907	Piping	PAP	22-23	19	2,99,281	2,97,528	2,85,813
908	Piping	PAP	22-23	19	5,70,886	5,67,543	5,45,196
909	Fabrication Work	PAP	22-23	19	6,95,223	6,91,151	6,63,938
910	Fabrication Work	PAP	22-23	19	5,08,083	5,05,108	4,85,220
911	Fabrication Work	PAP	22-23	19	3,92,794	3,90,494	3,75,119
912	Fabrication Work	PAP	22-23	14	1,78,726	1,77,679	1,68,002
913	Cable Try	PAP	22-23	14	2,13,257	2,12,008	2,00,461
914	Magnetrol Transmitter	PAP	22-23	19	15,29,273	15,20,317	14,60,455
915	Annair Make Heatless Air Dryer	PAP	22-23	14	2,03,586	2,02,394	1,91,371
916	Switch with handle	PAP	22-23	14	53,491	53,178	50,282
917	Cable HT	PAP	22-23	9	8,835	8,784	8,040

S. No.	Description	Plant	Year of Capitalization	Residual Life (Yrs)	Gross Block as at 31.03.2023 (₹)	Net Block as at 31.03.2023 (₹)	Fair Market Value (₹)
918	DO Fuse, Fibre Operating ROD	PAP	22-23	9	14,624	14,538	13,307
919	Nitrite Rubber with Aluminium Fixing	PAP	22-23	19	3,29,687	3,27,756	3,14,851
920	Transportation Charges	PAP	22-23	Charges	18,097	17,991	-
921	Transportation Charges	PAP	22-23	Charges	7,984	7,937	-
922	PVC Conduit Pipe	PAP	22-23	14	27,616	27,454	25,959
923	Transportation Charges	PAP	22-23	Charges	1,396	1,388	-
924	Transportation Charges	PAP	22-23	Charges	1,09,111	1,08,472	-
925	Transportation Charges	PAP	22-23	Charges	25,348	25,200	-
926	Transportation Charges	PAP	22-23	Charges	1,19,756	1,19,055	-
927	Import Frieght Charges (Anuchem)	PAP	22-23	Charges	7,21,363	7,17,139	-
928	Auxiliary Contact Block	PAP	22-23	14	90,242	89,713	84,827
929	Transportation Charges	PAP	22-23	Charges	9,030	8,977	-
930	Transportation Charges	PAP	22-23	Charges	1,17,095	1,16,409	-
931	Transportation Charges	PAP	22-23	Charges	29,274	29,102	-
932	Bag Filter Housing	PAP	22-23	14	1,31,732	1,30,961	1,23,828
933	Glass Tube Rotameter	PAP	22-23	14	1,11,240	1,10,589	1,04,566
934	Float & board Type Level Indictor	PAP	22-23	19	9,11,724	9,06,385	8,70,696
935	L T Busduct	PAP	22-23	19	7,84,238	7,79,646	7,48,948
936	Steam Trap	PAP	22-23	19	7,46,101	7,41,732	7,12,527
937	Supply of Electric Material	PAP	22-23	14	53,225	52,913	50,032
938	Supply of Hydrozen Gas Detector	PAP	22-23	19	2,50,352	2,48,886	2,39,086
939	Spiral HDPE Tank	PAP	22-23	19	1,98,330	1,97,168	1,89,405
940	Solvent Storage Tanks	PAP	22-23	19	16,60,069	16,50,347	15,85,366
941	Agitator	PAP	22-23	19	15,34,346	15,25,361	14,65,301
942	S S 316 MV 403	PAP	22-23	14	1,16,480	1,15,798	1,09,492
943	M S Storage Tank	PAP	22-23	19	14,32,077	14,23,691	13,67,634
944	Ammonia Scrubbing System	PAP	22-23	19	15,34,346	15,25,361	14,65,301
945	Control Valve	PAP	22-23	14	13,63,863	13,55,876	12,82,032
946	Column	PAP	22-23	14	1,36,386	1,35,588	1,28,203
947	HT Panels	PAP	22-23	19	12,18,953	12,11,814	11,64,100
948	HDG GI Cable	PAP	22-23	19	10,84,953	10,78,600	10,36,130
949	Level Indicator for Tank	PAP	22-23	19	79,838	79,370	76,245
950	Pump Skid for Hot Water System	PAP	22-23	14	9,99,395	9,93,542	9,39,431
951	Compressor Complete Skid	PAP	22-23	19	9,20,608	9,15,217	8,79,180
952	Watering Vaccum Pump	PAP	22-23	14	8,69,270	8,64,180	8,17,114
953	Hot Water System	PAP	22-23	19	8,47,300	8,42,338	8,09,172
954	Conical Top Flat Bottom	PAP	22-23	19	61,37,385	61,01,444	58,61,203
955	PVC/XLPE Armd Cabel With Copper Conductor	PAP	22-23	19	4,87,048	4,84,195	4,65,130



S. No.	Description	Plant	Year of Capitalization	Residual Life (Yrs)	Gross Block as at 31.03.2023 (₹)	Net Block as at 31.03.2023 (₹)	Fair Market Value (₹)
956	Spiral HDPE Ammonium Sulphate	PAP	22-23	19	5,30,841	5,27,732	5,06,953
957	S S Reactor	PAP	22-23	19	46,88,280	46,60,825	44,77,308
958	Gate Valve For Fire Hydrant System	PAP	22-23	14	4,33,018	4,30,482	4,07,037
959	Ammonia Storage tanks	PAP	22-23	19	42,96,170	42,71,011	41,02,842
960	Ammonia Storage tanks	PAP	22-23	19	42,96,170	42,71,011	41,02,842
961	Tanks	PAP	22-23	19	4,17,683	4,15,237	3,98,887
962	PH Analyser	PAP	22-23	19	39,21,107	38,98,145	37,44,657
963	PVC/XLPE Armd Cabel With Copper Conductor	PAP	22-23	19	35,11,815	34,91,249	33,53,783
964	Hydrogen PDRS	PAP	22-23	19	33,14,188	32,94,780	31,65,050
965	Storage Tank	PAP	22-23	19	30,68,693	30,50,722	29,30,601
966	Electric Panel MCC & PCC	PAP	22-23	19	29,46,881	29,29,623	28,14,271
967	Column Shell	PAP	22-23	19	27,95,920	27,79,547	26,70,103
968	Reactor Vessel	PAP	22-23	19	27,27,727	27,11,753	26,04,979
969	S S Receiver	PAP	22-23	19	27,27,727	27,11,753	26,04,979
970	Valves	PAP	22-23	14	25,27,179	25,12,380	23,75,548
971	Electrical Materila	PAP	22-23	14	2,34,584	2,33,211	2,20,509
972	S S Process Pump	PAP	22-23	14	22,80,289	22,66,935	21,43,472
973	Solvent Storage Tanks	PAP	22-23	19	18,22,028	18,11,358	17,40,036
974	Pumps	PAP	22-23	14	12,93,959	12,86,381	12,16,321
975	Pumps	PAP	22-23	14	1,86,188	1,85,097	1,75,017
976	Pumps	PAP	22-23	14	18,43,347	18,32,552	17,32,746
977	Cooling Tower	PAP	22-23	19	15,85,491	15,76,206	15,14,144
978	Solid PTFE Spacer	PAP	22-23	19	13,13,048	13,05,358	12,53,960
979	Multi Effect Evaporation	PAP	22-23	19	6,81,932	6,77,938	6,51,245
980	Cooling Tower	PAP	22-23	19	6,22,263	6,18,619	5,94,261
981	H2 & Ammonia Gas Detector	PAP	22-23	19	3,51,195	3,49,138	3,35,391
982	H2 & Ammonia Gas Detector	PAP	22-23	14	2,45,495	2,44,058	2,30,766
983	Multi Effect Evaporation	PAP	22-23	19	23,86,761	23,72,784	22,79,357
984	Steam Jet Ejector	PAP	22-23	14	2,06,284	2,05,076	1,93,907
985	Tank Weighing System	PAP	22-23	19	20,16,941	20,05,129	19,26,178
986	Flame Proof, Well Glass Fitting	PAP	22-23	14	1,50,281	1,49,401	1,41,264
987	Long Nut Bolt	PAP	22-23	14	1,45,595	1,44,742	1,36,859
988	M S Nut Bolt	PAP	22-23	14	1,13,713	1,13,047	1,06,890
989	LED Flood Light	PAP	22-23	3	1,45,571	1,44,718	1,12,817
990	LED Light Fitting	PAP	22-23	3	36,991	36,775	28,668
991	LED Light Fitting	PAP	22-23	3	75,580	75,137	58,574
992	LED Light Fitting	PAP	22-23	3	80,530	80,058	62,410
993	CS Seamless Pipe	PAP	22-23	14	17,74,746	17,64,353	16,68,261
994	Fabrication & Erection Work	PAP	22-23	Charges	3,97,907	3,95,577	-
995	Fabrication & Erection Work	PAP	22-23	Charges	2,18,218	2,16,940	-

S. No.	Description	Plant	Year of Capitalization	Residual Life (Yrs)	Gross Block as at 31.03.2023 (₹)	Net Block as at 31.03.2023 (₹)	Fair Market Value (₹)
996	Fabrication & Erection Work	PAP	22-23	Charges	15,15,861	15,06,984	-
997	Fabrication & Erection Work	PAP	22-23	Charges	2,04,980	2,03,780	-
998	Stellar Bright Tube	PAP	22-23	14	52,377	52,070	49,235
999	Labour Charges	PAP	22-23	Charges	2,32,860	2,31,496	-
1000	Chain Pully Block	PAP	22-23	19	2,77,771	2,76,144	2,65,271
1001	Burdon Sensing, Pre Gauge	PAP	22-23	19	9,93,063	9,87,247	9,48,375
1002	Transportation Charges	PAP	22-23	Charges	1,944	1,933	-
1003	M S Nut Bolt	PAP	22-23	14	1,08,712	1,08,076	1,02,189
1004	Fluke Clamp	PAP	22-23	9	13,107	13,030	11,927
1005	Greenfit	PAP	22-23	14	1,29,600	1,28,841	1,21,824
1006	Nut Bolt	PAP	22-23	14	84,078	83,586	79,034
1007	PVC Insulated G I Chain	PAP	22-23	14	1,86,895	1,85,800	1,75,681
1008	HDPE Tank	PAP	22-23	19	9,95,194	9,89,366	9,50,410
1009	Glass Colum Assembly	PAP	22-23	19	4,09,159	4,06,763	3,90,747
1010	S S Corr. Flexible Hose	PAP	22-23	14	2,28,362	2,27,025	2,14,660
1011	Piece Ball Valve	PAP	22-23	14	12,26,829	12,19,645	11,53,219
1012	Full View Glass	PAP	22-23	19	7,07,622	7,03,478	6,75,779
1013	Earthing Station	PAP	22-23	19	3,26,645	3,24,732	3,11,946
1014	Piece Ball Valve	PAP	22-23	14	22,08,833	21,95,898	20,76,303
1015	Valves	PAP	22-23	14	2,60,394	2,58,869	2,44,770
1016	Transportation Charges	PAP	22-23	Charges	18,097	17,991	-
1017	G I Strip HOTDIP	PAP	22-23	14	2,27,138	2,25,808	2,13,510
1018	Piece Ball Valve	PAP	22-23	14	2,88,457	2,86,768	2,71,150
1019	Supply of Bonet & Bottom Cone	PAP	22-23	9	39,919	39,685	36,326
1020	Solid PTEF Spacer	PAP	22-23	19	13,31,199	13,23,403	12,71,295
1021	Transportation Charges	PAP	22-23	Charges	59,878	59,528	-
1022	Transportation Charges	PAP	22-23	Charges	37,258	37,039	-
1023	Condensors	PAP	22-23	19	6,44,937	6,41,160	6,15,915
1024	Almonard Exhaust	PAP	22-23	9	20,292	20,173	18,466
1025	MCC Panel	PAP	22-23	19	17,04,497	16,94,515	16,27,794
1026	Fire Pump House	PAP	22-23	14	12,96,565	12,88,972	12,18,771
1027	CG	PAP	22-23	14	1,07,660	1,07,029	1,01,200
1028	Hydro Testing	PAP	22-23	14	67,862	67,465	63,790
1029	Ammonia Unloading Station	PAP	22-23	19	6,10,487	6,06,912	5,83,015
1030	Flush Bottom valve	PAP	22-23	14	5,95,449	5,91,962	5,59,722
1031	PTEF Corrugated	PAP	22-23	14	1,56,844	1,55,926	1,47,434
1032	M M Long Nut Bolt With Washer	PAP	22-23	19	8,02,384	7,97,685	7,66,277
1033	Perforated Cable Tray	PAP	22-23	19	3,31,433	3,29,492	3,16,518
1034	M S Nut Bolt & Washer	PAP	22-23	14	78,966	78,504	74,228
1035	RTD Sensor	PAP	22-23	19	3,87,849	3,85,577	3,70,395
1036	Piece BV FL	PAP	22-23	14	1,41,645	1,40,816	1,33,147
1037	Cop Flex Cable, Connector Grey Flex Cable	PAP	22-23	9	38,073	37,850	34,647

S. No.	Description	Plant	Year of Capitalization	Residual Life (Yrs)	Gross Block as at 31.03.2023 (₹)	Net Block as at 31.03.2023 (₹)	Fair Market Value (₹)
1038	Channel	PAP	22-23	14	2,08,157	2,06,938	1,95,667
1039	FLP Lights & Fittings	PAP	22-23	19	11,35,371	11,28,722	10,84,279
1040	Elevator Parts	PAP	22-23	19	8,11,499	8,06,746	7,74,981
1041	Sintex Double Wall Water Storage	PAP	22-23	14	1,51,730	1,50,841	1,42,626
1042	Morester Surge Arrestor	PAP	22-23	9	32,866	32,674	29,908
1043	Nut Bolt	PAP	22-23	14	64,668	64,290	60,788
1044	Nut Bolt	PAP	22-23	14	68,889	68,486	64,756
1045	Ball Valve	PAP	22-23	14	20,02,148	19,90,423	18,82,019
1046	Ball Valve	PAP	22-23	14	2,35,860	2,34,478	2,21,708
1047	Ball Valve & Gate Valve	PAP	22-23	14	3,45,255	3,43,233	3,24,540
1048	Condensor	PAP	22-23	19	19,43,846	19,32,463	18,56,373
1049	PTEF 90 DEG	PAP	22-23	19	4,34,731	4,32,186	4,15,169
1050	Ball Valve	PAP	22-23	14	5,75,286	5,71,917	5,40,769
1051	FLP Lined & Fittings	PAP	22-23	19	15,39,195	15,30,181	14,69,931
1052	Seamless Pipe	PAP	22-23	14	13,13,487	13,05,795	12,34,678
1053	Piece HBV	PAP	22-23	14	1,56,282	1,55,366	1,46,905
1054	Water Check	PAP	22-23	19	8,99,925	8,94,655	8,59,428
1055	Ball Valve	PAP	22-23	14	72,285	71,861	67,948
1056	Piece BV FL	PAP	22-23	9	47,394	47,117	43,129
1057	CS Seamless Pipe	PAP	22-23	14	5,73,237	5,69,880	5,38,843
1058	Ammonia Unloading Station	PAP	22-23	19	5,53,105	5,49,865	5,28,215
1059	SORF Flange	PAP	22-23	14	53,278	52,966	50,082
1060	SORF Flange	PAP	22-23	9	35,049	34,843	31,894
1061	CS FEP Lined Ball Valve	PAP	22-23	14	2,72,271	2,70,677	2,55,935
1062	ANSI	PAP	22-23	14	1,38,927	1,38,113	1,30,591
1063	S S SMLS Pipe	PAP	22-23	14	10,06,997	10,01,099	9,46,577
1064	FLP Lined & Fittings	PAP	22-23	14	54,396	54,077	51,132
1065	MCC Panel	PAP	22-23	19	17,04,498	16,94,517	16,27,796
1066	PTEF	PAP	22-23	14	77,192	76,740	72,561
1067	Kew	PAP	22-23	14	98,049	97,474	92,166
1068	Swage Nipple	PAP	22-23	14	1,71,684	1,70,679	1,61,383
1069	ANSI	PAP	22-23	19	3,82,308	3,80,069	3,65,104
1070	ANSI	PAP	22-23	14	68,064	67,665	63,980
1071	ANSI	PAP	22-23	14	1,45,124	1,44,274	1,36,416
1072	CS Seamless Pipe	PAP	22-23	14	5,19,334	5,16,293	4,88,174
1073	Vaccum Trap	PAP	22-23	14	90,283	89,754	84,866
1074	Greenfit	PAP	22-23	14	1,92,266	1,91,140	1,80,730
1075	FCS B/W SCH	PAP	22-23	9	41,782	41,537	38,021
1076	Concentric Reducer	PAP	22-23	14	96,124	95,562	90,357
1077	Transportation Charges	PAP	22-23	Charges	3,859	3,836	-
1078	ANSI	PAP	22-23	14	1,94,559	1,93,419	1,82,885
1079	ANSI	PAP	22-23	9	39,047	38,819	35,533
1080	ANSI	PAP	22-23	14	2,04,736	2,03,537	1,92,452
1081	CS Seamless Pipe	PAP	22-23	14	12,16,856	12,09,730	11,43,845
1082	Basekt Type Strainer	PAP	22-23	19	3,74,858	3,72,663	3,57,989
1083	SORF Flange, Butterfly Valve	PAP	22-23	14	2,06,886	2,05,674	1,94,473

S. No.	Description	Plant	Year of Capitalization	Residual Life (Yrs)	Gross Block as at 31.03.2023 (₹)	Net Block as at 31.03.2023 (₹)	Fair Market Value (₹)
1084	ANSI	PAP	22-23	14	1,42,865	1,42,028	1,34,293
1085	ANSI	PAP	22-23	14	51,469	51,167	48,381
1086	FLP Lined & Fittings	PAP	22-23	19	10,93,989	10,87,582	10,44,759
1087	Ball Valve	PAP	22-23	14	2,09,466	2,08,239	1,96,898
1088	Basekt Type Strainer	PAP	22-23	19	2,56,597	2,55,095	2,45,050
1089	Control Panel	PAP	22-23	19	16,30,158	16,20,611	15,56,801
1090	Ball Valve	PAP	22-23	14	2,54,569	2,53,078	2,39,294
1091	Concentric Reducer	PAP	22-23	19	3,35,238	3,33,274	3,20,152
1092	Slimline Next, LED Lamp	PAP	22-23	3	42,301	42,053	32,783
1093	SMLS Pipes	PAP	22-23	14	1,11,735	1,11,081	1,05,031
1094	Nut Bolt	PAP	22-23	9	10,845	10,781	9,869
1095	DIP GI Cable Tray	PAP	22-23	14	1,80,140	1,79,085	1,69,332
1096	Ordinary Well Glass	PAP	22-23	14	83,696	83,206	78,675
1097	ANSI	PAP	22-23	9	46,968	46,693	42,741
1098	CS Seamless Pipe	PAP	22-23	14	6,25,532	6,21,868	5,88,000
1099	WNRF, ANSI	PAP	22-23	14	61,608	61,247	57,912
1100	MS HEX Nut Bolt	PAP	22-23	14	50,457	50,162	47,430
1101	NOC FOR Fire Safety	PAP	22-23	14	2,32,860	2,31,496	2,18,888
1102	CS FEP Lined Ball Valve	PAP	22-23	14	81,340	80,864	76,459
1103	PTFE Bellow with MS Flanges	PAP	22-23	14	1,01,793	1,01,197	95,685
1104	DIA Junction Box	PAP	22-23	9	36,339	36,127	33,069
1105	Pin Switch Socket, Junction Box, LED Flood Light	PAP	22-23	3	3,89,874	3,87,590	3,02,152
1106	CS FEP Lined Reducer	PAP	22-23	9	18,549	18,440	16,880
1107	CS PTFE Lined Sightglass	PAP	22-23	9	12,554	12,481	11,425
1108	CS Feplined Wafertupe Swing Check Valve	PAP	22-23	14	14,232	14,149	13,378
1109	Utility Panel	PAP	22-23	19	12,03,577	11,96,529	11,49,416
1110	Watering Vaccum Pump	PAP	22-23	14	3,19,149	3,17,280	3,00,000
1111	Galvanized Gratings	PAP	22-23	14	1,84,292	1,83,213	1,73,235
1112	CU Strips for Earthing	PAP	22-23	19	3,38,645	3,36,661	3,23,406
1113	L Plug Valves	PAP	22-23	14	73,687	73,255	69,266
1114	Flanged	PAP	22-23	9	22,405	22,274	20,388
1115	Greenfir PPRC Elbow	PAP	22-23	9	4,519	4,492	4,112
1116	Greenfir PPRC Coupler	PAP	22-23	9	1,360	1,352	1,238
1117	Greenfir PPRC CPRE Flange	PAP	22-23	14	59,370	59,022	55,808
1118	PRS IBR Piping Supply	PAP	22-23	19	5,31,416	5,28,304	5,07,502
1119	Spark Proof Chain Pulley Block	PAP	22-23	14	2,22,694	2,21,390	2,09,332
1120	PTFE Bellow with MS Flanges	PAP	22-23	14	1,55,683	1,54,772	1,46,342
1121	M S Beam, M S Channel	PAP	22-23	19	27,01,327	26,85,508	25,79,768
1122	Vapour Recovery ARM	PAP	22-23	19	5,98,560	5,95,055	5,71,625



S. No.	Description	Plant	Year of Capitalization	Residual Life (Yrs)	Gross Block as at 31.03.2023 (₹)	Net Block as at 31.03.2023 (₹)	Fair Market Value (₹)
1123	Greenfit PPRC Core Flange	PAP	22-23	14	97,275	96,706	91,439
1124	PVP COP Flex Cable	PAP	22-23	9	31,133	30,951	28,331
1125	Braided Conduit, PVC Sleeve, Coupling	PAP	22-23	14	1,17,439	1,16,751	1,10,393
1126	S S 316 Deducting	PAP	22-23	19	25,91,340	25,76,165	24,74,730
1127	Five Cartridge Filter	PAP	22-23	19	21,50,642	21,38,048	20,53,863
1128	Cable Grand	PAP	22-23	9	14,903	14,816	13,562
1129	Hooter, Hand Lamp with LED Bulb	PAP	22-23	3	56,046	55,718	43,436
1130	Cable Termination	PAP	22-23	14	1,70,640	1,69,640	1,60,401
1131	MA 3050W-S3-Driver	PAP	22-23	14	64,935	64,554	61,039
1132	Nut Bolt With Washer, Half Coupling	PAP	22-23	9	42,846	42,595	38,990
1133	Wire Braided	PAP	22-23	14	63,737	63,364	59,913
1134	PTFE Corrugated	PAP	22-23	9	28,808	28,639	26,215
1135	MS Beam	PAP	22-23	14	1,70,834	1,69,833	1,60,584
1136	Y Type Strainer, Flanged END	PAP	22-23	9	14,690	14,604	13,368
1137	Candle Filters	PAP	22-23	19	41,04,376	40,80,340	39,19,679
1138	PP Ball Valve Flange	PAP	22-23	14	16,526	16,430	15,535
1139	PP Ball Valve Flange	PAP	22-23	14	25,149	25,002	23,640
1140	PP Butterfly Valve	PAP	22-23	14	5,189	5,159	4,878
1141	Green Fit PPR-FRP Pipe	PAP	22-23	14	98,678	98,100	92,757
1142	Green FIT PPRC Coupler	PAP	22-23	9	1,846	1,835	1,679
1143	Aluminium Conductor Armour	PAP	22-23	14	71,807	71,387	67,499
1144	Accessories	PAP	22-23	19	45,73,631	45,46,847	43,67,817
1145	Ball Value	PAP	22-23	9	38,562	38,336	35,091
1146	Wire Braided	PAP	22-23	14	52,626	52,318	49,469
1147	NOC for Explosive Licence for plant	PAP	22-23	19	19,95,940	19,84,252	19,06,123
1148	Backing Flanges for Aluminium Storage Tank	PAP	22-23	19	31,935	31,748	30,498
1149	M S Nut Bolt	PAP	22-23	9	14,516	14,431	13,209
1150	Water Monitor	PAP	22-23	19	2,82,020	2,80,368	2,69,329
1151	CS FEP Lined Ball Valve	PAP	22-23	14	74,774	74,336	70,287
1152	CS FEP Lined Ball Valve, EPTEF, Gasket	PAP	22-23	14	4,02,234	3,99,878	3,78,100
1153	CS FEP Lined Con Reducer	PAP	22-23	9	7,283	7,240	6,628
1154	CS FEP Lined Butterfly Valve	PAP	22-23	14	26,084	25,931	24,519
1155	Panel Cabin with Chequered Plate Flooring	PAP	22-23	19	3,58,014	3,55,918	3,41,903
1156	Float And Board Type Level Indicator	PAP	22-23	9	17,233	17,132	15,682

S. No.	Description	Plant	Year of Capitalization	Residual Life (Yrs)	Gross Block as at 31.03.2023 (₹)	Net Block as at 31.03.2023 (₹)	Fair Market Value (₹)
1157	Greenfit PPR-FRP Pipe, Greenfit PPRC core Flange	PAP	22-23	14	50,878	50,580	47,825
1158	Tubes, S S Seamless Pipe	PAP	22-23	14	6,87,549	6,83,523	6,46,296
1159	ANSI SWRF, ANSI Elbow	PAP	22-23	14	1,10,814	1,10,165	1,04,165
1160	SMLS Pipes	PAP	22-23	14	1,02,963	1,02,360	96,785
1161	CS Seamless Pipe	PAP	22-23	14	4,57,111	4,54,434	4,29,684
1162	M S Bolt	PAP	22-23	9	22,707	22,574	20,664
1163	M S SMLS Pipe	PAP	22-23	14	1,55,774	1,54,861	1,46,427
1164	M S SMLS Pipe	PAP	22-23	14	5,07,727	5,04,754	4,77,263
1165	S S SMLS Pipe	PAP	22-23	14	8,30,654	8,25,790	7,80,815
1166	ANSI SWRF	PAP	22-23	9	24,285	24,143	22,100
1167	ANSI BLRF	PAP	22-23	14	66,132	65,745	62,164
1168	M S Nut Bolt, M S Washer	PAP	22-23	14	78,335	77,877	73,635
1169	ANSI Elbow	PAP	22-23	14	2,07,844	2,06,627	1,95,373
1170	SMLS Pipes	PAP	22-23	14	6,55,555	6,51,716	6,16,221
1171	M S SMLS Pipe	PAP	22-23	14	2,49,081	2,47,622	2,34,136
1172	Remote Operated Valve, Ball Valve, Low Level Switch	PAP	22-23	14	2,95,916	2,94,183	2,78,161
1173	Remote Operated Valve, Flanged	PAP	22-23	14	6,99,132	6,95,037	6,57,184
1174	Ball Valve, Non Return Valv, Flange End	PAP	22-23	14	2,48,989	2,47,530	2,34,049
1175	Strainer. Sight Glass Toughened	PAP	22-23	14	1,09,344	1,08,704	1,02,784
1176	PP Blind Flange	PAP	22-23	14	1,91,655	1,90,533	1,80,156
1177	Class Pipe	PAP	22-23	14	65,866	65,480	61,914
1178	Greenfit PPR-FRP Pipe	PAP	22-23	14	21,784	21,656	20,477
1179	Greenfit PPR-FRP Pipe	PAP	22-23	14	21,579	21,452	20,284
1180	Ball Valve, Flange End	PAP	22-23	14	10,045	9,986	9,442
1181	D Curve Light	PAP	22-23	9	32,073	31,886	29,187
1182	Ball Valve Flange	PAP	22-23	14	13,367	13,289	12,565
1183	Distribution Box	PAP	22-23	14	99,122	98,542	93,175
1184	PP Ball Valve Flange End	PAP	22-23	14	16,804	16,706	15,796
1185	PP Ball Valve Flange End	PAP	22-23	14	3,762	3,740	3,536
1186	Greenfit PPRC Reducer	PAP	22-23	9	2,870	2,853	2,612
1187	SMLS Pipes	PAP	22-23	14	6,81,011	6,77,023	6,40,150
1188	Labour Charges	PAP	22-23	Charges	3,45,963	3,43,937	-
1189	FEP Lined Design Ball Valve, Flange And Drilled	PAP	22-23	14	1,02,655	1,02,054	96,496
1190	M S Nut Bolt, Brass Reducer	PAP	22-23	14	86,382	85,876	81,199
1191	LED	PAP	22-23	3	1,17,694	1,17,005	91,213



S. No.	Description	Plant	Year of Capitalization	Residual Life (Yrs)	Gross Block as at 31.03.2023 (₹)	Net Block as at 31.03.2023 (₹)	Fair Market Value (₹)
1192	Piston valve	PAP	22-23	14	1,46,781	1,45,922	1,37,975
1193	Greenfit PPRC	PAP	22-23	9	46,460	46,188	42,279
1194	Starter Cum Control Panel	PAP	22-23	19	10,25,116	10,19,112	9,78,985
1195	Wire Braided Flexible Hose Flanged End	PAP	22-23	14	52,161	51,855	49,031
1196	Level Transmitter	PAP	22-23	19	9,77,733	9,72,007	9,33,735
1197	XLPE Cop. Arm Cable	PAP	22-23	19	2,67,480	2,65,914	2,55,443
1198	High Level Arm	PAP	22-23	14	73,343	72,913	68,942
1199	Safety Shower Model	PAP	22-23	14	91,067	90,533	85,603
1200	Medium Velocity Spary Nozzel, Jet Nozzel	PAP	22-23	14	91,031	90,498	85,569
1201	Canvas Hose Pipe, Fire Hydrant Valve	PAP	22-23	14	1,06,212	1,05,590	99,839
1202	Fire Hydrant Valve	PAP	22-23	14	1,11,336	1,10,684	1,04,656
1203	Well Glass Light Fitting	PAP	22-23	14	99,132	98,551	93,184
1204	Aluminium Armoured Cable	PAP	22-23	14	98,866	98,287	92,934
1205	Switch Disconnecter Fuse, HRC Fuse	PAP	22-23	9	19,652	19,537	17,883
1206	Copper Armoured Cable	PAP	22-23	19	3,22,810	3,20,920	3,08,284
1207	Ball Valve Flange, PTFE, Gasket Ring	PAP	22-23	14	41,393	41,150	38,909
1208	Flamp Prof Motor	PAP	22-23	14	51,229	50,929	48,155
1209	Compressure spares	PAP	22-23	9	52,264	51,958	47,561
1210	CQ Coil	PAP	22-23	19	12,48,992	12,41,678	11,92,787
1211	SMLS Pipes	PAP	22-23	14	81,987	81,506	77,067
1212	ANSI ELBOW	PAP	22-23	9	36,725	36,510	33,420
1213	SMLS Pipes	PAP	22-23	14	1,07,557	1,06,927	1,01,104
1214	SMLS Pipes	PAP	22-23	14	1,30,637	1,29,872	1,22,799
1215	SMLS Pipes	PAP	22-23	14	3,11,469	3,09,645	2,92,781
1216	ANSI Elbow	PAP	22-23	14	1,12,744	1,12,084	1,05,979
1217	ANSI SORF	PAP	22-23	9	20,582	20,462	18,730
1218	SWRF, ANSICO.RED	PAP	22-23	9	30,604	30,425	27,850
1219	Pipe Fittings And Flanges	PAP	22-23	14	1,66,395	1,65,420	1,56,411
1220	M S Nut Bolt	PAP	22-23	14	98,200	97,625	92,308
1221	SMLS Pipes	PAP	22-23	14	13,90,506	13,82,363	13,07,076
1222	SMLS Pipes	PAP	22-23	14	3,73,124	3,70,939	3,50,737
1223	Pipe Fittings And Flanges	PAP	22-23	14	1,68,018	1,67,034	1,57,937
1224	M S Pipe Patti Clamp	PAP	22-23	14	24,345	24,203	22,884
1225	Highwash Shower	PAP	22-23	14	1,55,683	1,54,772	1,46,342
1226	Ring Type Lugs, Precision PVC	PAP	22-23	9	40,640	40,402	36,982
1227	PTFE Corrugated Full Flexible Hose	PAP	22-23	14	97,801	97,228	91,933
1228	CS Barrel Nippel, SORF Flange	PAP	22-23	14	1,39,357	1,38,540	1,30,995

S. No.	Description	Plant	Year of Capitalization	Residual Life (Yrs)	Gross Block as at 31.03.2023 (₹)	Net Block as at 31.03.2023 (₹)	Fair Market Value (₹)
1229	S S Flange ASA, M S Socket	PAP	22-23	9	43,538	43,283	39,620
1230	PPRC Core Flange	PAP	22-23	9	20,336	20,217	18,506
1231	G.I.pipe M S Pipe	PAP	22-23	14	8,49,874	8,44,897	7,98,882
1232	M S Socket Flange	PAP	22-23	14	69,617	69,209	65,440
1233	BLRF Flanges, Conc Reducer	PAP	22-23	14	82,100	81,619	77,174
1234	SMLS Pipes	PAP	22-23	14	1,42,084	1,41,252	1,33,559
1235	Thermodynamic Steam Trap	PAP	22-23	14	68,474	68,073	64,366
1236	Manual Ball Valve	PAP	22-23	14	88,087	87,572	82,802
1237	Greenfit PPRC Elbow	PAP	22-23	9	9,333	9,278	8,493
1238	Greenfit PPRC Core Flange	PAP	22-23	14	1,10,530	1,09,883	1,03,898
1239	Greenfit PPRC Flange	PAP	22-23	9	10,718	10,655	9,754
1240	Ladder	PAP	22-23	14	72,466	72,042	68,118
1241	Seamless Elbow, Flanges	PAP	22-23	9	28,475	28,309	25,913
1242	Needle Valve	PAP	22-23	14	16,167	16,072	15,197
1243	FRP Motor Covers	PAP	22-23	14	1,98,137	1,96,977	1,86,249
1244	Colour Coated Sheet	PAP	22-23	Building	10,01,076	9,95,213	-
1245	Colour Coated Sheet	PAP	22-23	Building	1,31,272	1,30,503	-
1246	SORF Flanges	PAP	22-23	14	52,280	51,974	49,144
1247	PTEF Corrugated Full Flexible Hose	PAP	22-23	14	1,22,418	1,21,701	1,15,073
1248	Wire Braided Full Flexible Hose	PAP	22-23	9	13,439	13,361	12,230
1249	Wire Braided Full Flexible Hose	PAP	22-23	9	45,840	45,572	41,714
1250	Backlight Sheet, Alumium Tapes	PAP	22-23	Building	14,650	14,564	-
1251	Vibration Sheet	PAP	22-23	Building	22,434	22,303	-
1252	SORF Flanges, GIU Clamp	PAP	22-23	9	41,023	40,783	37,331
1253	SORF Flanges, GIU Clamp	PAP	22-23	9	10,379	10,318	9,445
1254	SORF Flanges, HEX Nipple	PAP	22-23	9	32,100	31,912	29,211
1255	Ball Valve	PAP	22-23	14	1,41,579	1,40,750	1,33,084
1256	Manual Globe Valve	PAP	22-23	14	1,25,601	1,24,865	1,18,064
1257	Ball Valve	PAP	22-23	14	1,23,642	1,22,918	1,16,223
1258	GI Flat	PAP	22-23	14	95,007	94,450	89,306
1259	Weighing Scale	PAP	22-23	14	70,656	70,243	66,417
1260	Glass Funnel	PAP	22-23	9	48,906	48,619	44,504
1261	FEP Lined Blind Flanges	PAP	22-23	9	17,963	17,858	16,347
1262	FEP Lined Eccentriv Reducer	PAP	22-23	9	19,494	19,380	17,739
1263	FEP Lined Ball Valve	PAP	22-23	14	19,454	19,340	18,287
1264	3G Make Pure PTEF DIP Pipe	PAP	22-23	14	27,451	27,290	25,804



S. No.	Description	Plant	Year of Capitalization	Residual Life (Yrs)	Gross Block as at 31.03.2023 (₹)	Net Block as at 31.03.2023 (₹)	Fair Market Value (₹)
1265	FEP Lined MS Fabricated	PAP	22-23	14	69,576	69,168	65,401
1266	PTEF Lined MS Fabricated Pipe	PAP	22-23	14	1,06,083	1,05,462	99,718
1267	FEP Lined Design ball Valve	PAP	22-23	14	1,19,546	1,18,846	1,12,373
1268	PTEF Lined MS Fabricated Pipe	PAP	22-23	14	62,168	61,804	58,438
1269	FEP Lined MS Fabricated	PAP	22-23	9	8,849	8,797	8,052
1270	FEP Lined MS Fabricated	PAP	22-23	14	1,11,948	1,11,293	1,05,231
1271	FEP Lined MS Fabricated	PAP	22-23	14	1,03,504	1,02,898	97,294
1272	FEP Lined MS Fabricated	PAP	22-23	14	62,193	61,829	58,462
1273	Erection & Commissioning Charges	PAP	22-23	Charges	6,65,313	6,61,417	-
1274	Installation Armoured Cable	PAP	22-23	19	5,42,826	5,39,647	5,18,399
1275	Installation of LT Power & Control Cable	PAP	22-23	19	9,64,923	9,59,272	9,21,502
1276	Installation of suspended mounted light fixtures	PAP	22-23	19	5,41,723	5,38,551	5,17,346
1277	Installation of suspended mounted light fixtures	PAP	22-23	14	1,13,470	1,12,806	1,06,662
1278	Installation of Push Bottom	PAP	22-23	19	3,85,395	3,83,138	3,68,053
1279	FLP & WP LT Cable Termination	PAP	22-23	14	1,55,371	1,54,461	1,46,048
1280	Cooling Tower	PAP	22-23	9	45,082	44,818	41,024
1281	Colour Coated Sheet	PAP	22-23	Building	1,07,568	1,06,938	-
1282	Lease agreement value (Siemens)	PAP	22-23	Negative Entry	-14,41,69,999	-14,33,25,716	-14,41,69,999
1283	Fabrication work	PAP	22-23	19	8,65,486	8,60,417	8,26,539
1284	Leaf Panic Bar Door with vision panel	PAP	22-23	19	2,72,778	2,71,181	2,60,503
1285	Surface Box, Switch plate	PAP	22-23	9	32,081	31,894	29,194
1286	CP Piston Valve Flanges	PAP	22-23	14	63,450	63,078	59,643
1287	Barrel Pump	PAP	22-23	14	16,766	16,668	15,760
1288	SORF Flanges	PAP	22-23	9	7,851	7,805	7,144
1289	S S Reducer, S S Flange	PAP	22-23	9	10,678	10,616	9,717
1290	CS Thermo Dynamic	PAP	22-23	14	54,090	53,773	50,845
1291	SORF Flanges	PAP	22-23	9	13,439	13,361	12,230
1292	Manual Ball Valve	PAP	22-23	14	18,363	18,255	17,261

S. No.	Description	Plant	Year of Capitalization	Residual Life (Yrs)	Gross Block as at 31.03.2023 (₹)	Net Block as at 31.03.2023 (₹)	Fair Market Value (₹)
1293	MS Seamless Pipe	PAP	22-23	14	58,186	57,845	54,695
1294	S S Flanges, M S Elbow	PAP	22-23	14	55,274	54,951	51,958
1295	Seamless Pipe, ISMB	PAP	22-23	14	4,38,157	4,35,591	4,11,867
1296	GI U Clamp	PAP	22-23	9	3,699	3,677	3,366
1297	G I Square Pipe	PAP	22-23	14	4,71,867	4,69,104	4,43,555
1298	M S Plate, ISMC	PAP	22-23	14	2,43,294	2,41,870	2,28,697
1299	ISMB, ISMC, MS Plate	PAP	22-23	19	21,75,209	21,62,470	20,77,324
1300	MS Seamless Concentric Reducer	PAP	22-23	9	6,320	6,283	5,752
1301	MS Blind Flanges, MS SORF Flanges	PAP	22-23	9	29,340	29,168	26,700
1302	MS Beam, Seamless Pipe	PAP	22-23	14	10,38,920	10,32,835	9,76,584
1303	Soft Teflon Gasket	PAP	22-23	9	4,258	4,233	3,875
1304	M S Flanges, S S Flanges, S S Elbow	PAP	22-23	9	41,677	41,432	37,926
1305	Crocodile Clap	PAP	22-23	9	13,373	13,294	12,169
1306	M S Plate	PAP	22-23	19	4,44,534	4,41,931	4,24,530
1307	Pipe & Flanges	PAP	22-23	14	1,40,794	1,39,969	1,32,346
1308	Pipe Fittings	PAP	22-23	14	3,79,861	3,77,636	3,57,069
1309	Pipe Fittings	PAP	22-23	14	79,192	78,728	74,441
1310	Ball Valve, Needle Valve	PAP	22-23	14	24,808	24,663	23,320
1311	M S Flanges	PAP	22-23	9	30,418	30,240	27,680
1312	CS Seamless Pipe	PAP	22-23	14	1,85,154	1,84,070	1,74,045
1313	UPS, Battery	PAP	22-23	9	3,10,571	3,08,752	2,82,620
1314	M S Full Thread Nut+Bolt with washer	PAP	22-23	9	30,604	30,425	27,850
1315	Seamless Bend, SORF Flange	PAP	22-23	14	75,513	75,071	70,982
1316	GI ERW Pipe	PAP	22-23	14	3,03,146	3,01,371	2,84,957
1317	MS Blind Flanges	PAP	22-23	9	14,371	14,287	13,077
1318	Air Cooled Servo Stabiliser	PAP	22-23	3	1,35,272	1,34,479	1,04,835
1319	Wire Braided Full Flexible Hose	PAP	22-23	9	31,469	31,285	28,637
1320	Flame Arrestor	PAP	22-23	14	2,00,118	1,98,946	1,88,111
1321	FR Corp Flex Cable	PAP	22-23	9	28,796	28,627	26,204
1322	GI Nut Bolt with Washer	PAP	22-23	9	7,518	7,474	6,841
1323	Piece BV FI	PAP	22-23	14	69,006	68,602	64,866
1324	MS Seamless Concentric Reducer	PAP	22-23	9	9,581	9,524	8,718
1325	Motor Pump	PAP	22-23	14	1,27,740	1,26,992	1,20,076
1326	Ball Valve	PAP	22-23	14	44,070	43,812	41,426
1327	Ball Valve	PAP	22-23	14	84,309	83,815	79,250
1328	Greenfit PPRC Core Flange, Ball Valve	PAP	22-23	14	29,008	28,838	27,267
1329	PP Sight Glass Valve	PAP	22-23	14	2,196	2,183	2,064
1330	Synthetic Enamel Paint	PAP	22-23	0	59,305	58,957	-
1331	Safety Relief Valve	PAP	22-23	14	2,07,578	2,06,362	1,95,123
1332	Pressure Gauge	PAP	22-23	9	49,233	48,945	44,802



S. No	Description	Plant	Year of Capitalization	Residual Life (Yrs)	Gross Block as at 31.03.2023 (₹)	Net Block as at 31.03.2023 (₹)	Fair Market Value (₹)
1333	CS Fep Lined Ball Valve	PAP	22-23	14	39,335	39,104	36,975
1334	FEP Lined MS Fabricated Pipe	PAP	22-23	14	18,043	17,938	16,961
1335	FEP Lined Fabricated reducer, Flange	PAP	22-23	9	12,854	12,779	11,697
1336	FEP Lined discharge assembly	PAP	22-23	Charges	1,71,791	1,70,785	-
1337	CS FEP Lined Butterfly Valve	PAP	22-23	14	69,219	68,814	65,066
1338	CS FEP Lined Equal TEE	PAP	22-23	14	1,88,169	1,87,067	1,76,879
1339	Cable Gland	PAP	22-23	14	59,033	58,688	55,491
1340	Brass ET Cable Gland	PAP	22-23	9	19,833	19,717	18,048
1341	Platform Scale Flexi PS	PAP	22-23	14	97,003	96,435	91,183
1342	FEP Lined MS Fabricated Pipe	PAP	22-23	14	17,786	17,682	16,719
1343	FEP Lined MS Fabricated Pipe	PAP	22-23	14	5,891	5,856	5,537
1344	FEP Lined MS Fabricated Pipe	PAP	22-23	14	62,182	61,817	58,451
1345	FEP Lined MS Fabricated Pipe	PAP	22-23	14	39,148	38,919	36,799
1346	FEP Lined MS Fabricated Pipe	PAP	22-23	14	22,186	22,056	20,854
1347	FEP Lined MS Fabricated Pipe	PAP	22-23	14	48,541	48,257	45,629
1348	FEP Lined MS Fabricated Pipe	PAP	22-23	14	35,117	34,911	33,010
1349	FEP Lined MS Fabricated Pipe	PAP	22-23	14	2,11,256	2,10,018	1,98,580
1350	FEP Lined MS Fabricated Pipe, Flanges	PAP	22-23	14	91,997	91,458	86,477
1351	FEP Lined MS Fabricated Pipe, Flanges	PAP	22-23	14	90,472	89,942	85,044
1352	Erection work	PAP	22-23	Charges	11,67,198	11,60,362	-
1353	Installation of Control cable	PAP	22-23	19	6,15,941	6,12,334	5,88,224
1354	Installation of Control cable	PAP	22-23	14	1,47,297	1,46,435	1,38,459
1355	PPRC Piping	PAP	22-23	14	1,02,079	1,01,481	95,954
1356	PPRC Piping	PAP	22-23	14	1,20,430	1,19,724	1,13,204
1357	Vaccum Packing Machine	PAP	22-23	14	2,32,860	2,31,496	2,18,888
1358	MS SORF Flanges	PAP	22-23	9	10,645	10,583	9,687
1359	Color Coated Sheet	PAP	22-23	Building	4,62,686	4,59,976	-
1360	Motor Pump	PAP	22-23	14	99,797	99,213	93,809
1361	Chemical Process Pump	PAP	22-23	14	1,72,765	1,71,753	1,62,399
1362	Socket Weld Elbow	PAP	22-23	9	34,516	34,314	31,410

S. No.	Description	Plant	Year of Capitalization	Residual Life (Yrs)	Gross Block as at 31.03.2023 (₹)	Net Block as at 31.03.2023 (₹)	Fair Market Value (₹)
1363	Switch, Isulation Tape, LED	PAP	22-23	3	64,853	64,474	50,261
1364	Motor Pump	PAP	22-23	14	1,39,716	1,38,898	1,31,333
1365	Cement	PAP	22-23	14	50,697	50,400	47,655
1366	Flowfilt PTEF	PAP	22-23	14	1,62,603	1,61,650	1,52,846
1367	Fabrication work	PAP	22-23	14	83,696	83,206	78,675
1368	Fabrication work	PAP	22-23	9	44,363	44,103	40,370
1369	Elbow, Flanges	PAP	22-23	14	1,47,221	1,46,358	1,38,387
1370	Electrical Switch Gear	PAP	22-23	14	69,193	68,787	65,041
1371	Electrical Switch Gear	PAP	22-23	14	2,03,634	2,02,441	1,91,416
1372	ABC Fire Extunguisher	PAP	22-23	9	1,86,284	1,85,193	1,69,518
1373	Pipe	PAP	22-23	14	6,27,899	6,24,222	5,90,225
1374	Copper Cable	PAP	22-23	19	8,56,832	8,51,814	8,18,274
1375	Rolling Shutter	PAP	22-23	14	1,01,660	1,01,065	95,560
1376	Fabrication & Erection Work	PAP	22-23	Charges	21,82,014	21,69,236	-
1377	Fabrication & Erection Work	PAP	22-23	Charges	5,90,904	5,87,444	-
1378	Motor	PAP	22-23	14	10,31,422	10,25,381	9,69,536
1379	Fabrication & Erection Work	PAP	22-23	Charges	7,63,177	7,58,708	-
1380	Centrifugal End Suction Pump	PAP	22-23	14	1,79,007	1,77,959	1,68,267
1381	Panic Bar Door & Dead Lock Door	PAP	22-23	14	1,61,959	1,61,010	1,52,241
1382	Watering Vaccum Pump	PAP	22-23	14	15,49,584	15,40,509	14,56,609
1383	Manual Ball Valve	PAP	22-23	14	56,312	55,982	52,933
1384	Manual Ball Valve	PAP	22-23	14	2,35,042	2,33,665	2,20,939
1385	Manual Ball Valve	PAP	22-23	14	1,77,261	1,76,223	1,66,625
1386	Exhaust System FOR DG Set	PAP	22-23	19	15,77,676	15,68,436	15,06,680
1387	Glass line Agitator	PAP	22-23	19	28,64,113	28,47,340	27,35,228
1388	Valve	PAP	22-23	14	6,77,675	6,73,706	6,37,014
1389	Deflagration Flame Arrestor	PAP	22-23	14	2,10,006	2,08,776	1,97,406
1390	Detonation Flame Arrestor	PAP	22-23	19	6,32,488	6,28,784	6,04,026
1391	Motor & Gearbox	PAP	22-23	14	7,43,306	7,38,953	6,98,707
1392	Dual Chamber Humidity Control	PAP	22-23	19	44,66,652	44,40,495	42,65,653
1393	Fragiile Item Stuffing Insurance 7 BCD	PAP	22-23	19	6,30,787	6,27,093	6,02,401
1394	Platform Scale	PAP	22-23	14	86,491	85,984	81,301
1395	PPRC Piping	PAP	22-23	14	1,61,005	1,60,062	1,51,344
1396	Color Coated Sheet	PAP	22-23	Building	1,71,052	1,70,050	-
1397	ATG/4CBRT	PAP	22-23	19	14,32,057	14,23,670	13,67,614
1398	Deluge Valve	PAP	22-23	14	1,31,732	1,30,961	1,23,828
1399	Pump	PAP	22-23	14	6,08,624	6,05,060	5,72,107

S No.	Description	Plant	Year of Capitalization	Residual Life (Yrs)	Gross Block as at 31.03.2023 (₹)	Net Block as at 31.03.2023 (₹)	Fair Market Value (₹)
1400	Fabrication of Structural work	PAP	22-23	19	25,33,732	25,18,895	24,19,715
1401	Fabrication of Structural work	PAP	22-23	19	10,07,817	10,01,915	9,62,465
1402	Pipe	PAP	22-23	14	6,59,763	6,55,900	6,20,178
1403	Hose Reel	PAP	22-23	14	81,276	80,800	76,399
1404	Steam Booster for existing system	PAP	22-23	14	1,26,410	1,25,669	1,18,825
1405	Cooling Tower	PAP	22-23	19	4,56,894	4,54,219	4,36,334
1406	Chilling Insulation	PAP	22-23	19	14,69,525	14,60,919	14,03,396
1407	Chilling Insulation	PAP	22-23	19	3,80,390	3,78,162	3,63,272
1408	PPRC Piping	PAP	22-23	14	1,04,791	1,04,177	98,503
1409	Conductor, Cable	PAP	22-23	14	1,97,134	1,95,979	1,85,306
1410	Fabrication work	PAP	22-23	19	5,32,623	5,29,504	5,08,655
1411	Tank	PAP	22-23	19	15,88,048	15,78,749	15,16,586
1412	Transmeter, Cable Gland	PAP	22-23	19	14,57,629	14,49,093	13,92,036
1413	Suction Pump	PAP	22-23	14	5,27,749	5,24,658	4,96,084
1414	Pump	PAP	22-23	14	2,00,495	1,99,321	1,88,465
1415	Trex Device Communicator	PAP	22-23	19	7,13,301	7,09,123	6,81,202
1416	Vaccum Dryer	PAP	22-23	19	40,91,590	40,67,629	39,07,469
1417	Tube Condenser, Receiver	PAP	22-23	19	5,79,642	5,76,247	5,53,558
1418	Fabrication and supply	PAP	22-23	19	30,68,693	30,50,722	29,30,601
1419	Fabrication Work	PAP	22-23	19	16,65,710	16,55,956	15,90,753
1420	Gasket	PAP	22-23	9	16,367	16,271	14,894
1421	Pipe	PAP	22-23	14	14,63,035	14,54,467	13,75,253
1422	PTFE	PAP	22-23	19	24,44,814	24,30,496	23,34,797
1423	BAF/FLG/BE&CE	PAP	22-23	19	6,64,883	6,60,990	6,34,964
1424	Commissioning Charges	PAP	22-23	Charges	99,797	99,213	-
1425	Fabrication work	PAP	22-23	19	5,30,127	5,27,022	5,06,271
1426	Fabrication work	PAP	22-23	19	14,75,247	14,66,607	14,08,861
1427	Valve	PAP	22-23	14	1,73,347	1,72,332	1,62,947
1428	Nut Bolt	PAP	22-23	14	92,737	92,194	87,172
1429	Cable	PAP	22-23	19	4,50,336	4,47,699	4,30,071
1430	APFC Panel With Epcos	PAP	22-23	19	21,61,461	21,48,803	20,64,195
1431	Cable	PAP	22-23	14	54,642	54,322	51,364
1432	Pipe	PAP	22-23	14	3,44,783	3,42,764	3,24,096
1433	Pipe	PAP	22-23	14	1,20,778	1,20,071	1,13,532
1434	Control Panel	PAP	22-23	19	4,37,289	4,34,728	4,17,611
1435	Hex Bolt	PAP	22-23	19	2,71,324	2,69,735	2,59,114
1436	Pipe	PAP	22-23	14	2,65,990	2,64,432	2,50,030
1437	Flanges, Elbow	PAP	22-23	19	3,60,779	3,58,667	3,44,544
1438	Flanges, Elbow	PAP	22-23	14	98,466	97,890	92,558
1439	Electricals panel	PAP	22-23	19	17,30,402	17,20,268	16,52,534
1440	Cable	PAP	22-23	19	2,63,238	2,61,696	2,51,392
1441	Flanges	PAP	22-23	14	1,65,663	1,64,693	1,55,723
1442	Flanges	PAP	22-23	14	58,548	58,205	55,035
1443	PTFE	PAP	22-23	19	6,61,126	6,57,254	6,31,375

S. No.	Description	Plant	Year of Capitalization	Residual Life (Yrs)	Gross Block as at 31.03.2023 (₹)	Net Block as at 31.03.2023 (₹)	Fair Market Value (₹)
1444	PTFE	PAP	22-23	9	29,604	29,431	26,940
1445	PTFE	PAP	22-23	19	5,90,723	5,87,264	5,64,141
1446	Manual Ball Valve	PAP	22-23	14	86,491	85,984	81,301
1447	Micro Pulverizer	PAP	22-23	19	6,98,980	6,94,887	6,67,526
1448	Switch Process Indicator	PAP	22-23	14	73,348	72,919	68,947
1449	Enclosuer	PAP	22-23	14	54,489	54,170	51,220
1450	Pipe	PAP	22-23	14	2,92,657	2,90,943	2,75,097
1451	Flanges, Elbow	PAP	22-23	19	3,84,159	3,81,909	3,66,871
1452	Reducer, Elbow, Flanges	PAP	22-23	14	82,033	81,553	77,111
1453	Flanges, Tee, Sight Glasses	PAP	22-23	9	30,588	30,409	27,835
1454	Ball Valve, Felxible Hose	PAP	22-23	14	1,78,590	1,77,544	1,67,875
1455	PTFE	PAP	22-23	9	6,187	6,151	5,631
1456	PTFE	PAP	22-23	9	20,973	20,851	19,086
1457	Pipe	PAP	22-23	14	82,116	81,635	77,189
1458	PTFE	PAP	22-23	14	55,221	54,898	51,908
1459	Glass	PAP	22-23	9	13,799	13,718	12,557
1460	Wire Mess	PAP	22-23	14	97,994	97,420	92,114
1461	Copper Tube, Connector	PAP	22-23	14	59,520	59,172	55,949
1462	Hex Bolt	PAP	22-23	14	73,916	73,483	69,481
1463	Pipe, Elbow, Flanges	PAP	22-23	14	3,32,786	3,30,837	3,12,819
1464	Fabrication & Erection Work	PAP	22-23	Charges	16,50,607	16,40,941	-
1465	Flanges	PAP	22-23	19	2,59,472	2,57,953	2,47,796
1466	Valve	PAP	22-23	14	2,34,190	2,32,819	2,20,139
1467	Reducer	PAP	22-23	9	14,683	14,597	13,362
1468	Short Band	PAP	22-23	9	8,935	8,883	8,131
1469	Pipe	PAP	22-23	14	42,089	41,843	39,564
1470	Fume Hood	PAP	22-23	19	4,72,749	4,69,981	4,51,475
1471	Cable	PAP	22-23	14	1,98,035	1,96,875	1,86,152
1472	Cable	PAP	22-23	14	1,28,342	1,27,590	1,20,641
1473	Motor	PAP	22-23	14	44,889	44,626	42,195
1474	Pump	PAP	22-23	14	76,635	76,187	72,037
1475	Pump	PAP	22-23	14	2,35,266	2,33,889	2,21,150
1476	Pipe	PAP	22-23	14	18,254	18,147	17,158
1477	PTFE	PAP	22-23	19	5,21,388	5,18,335	4,97,925
1478	PTFE	PAP	22-23	14	51,298	50,998	48,220
1479	Push Bottom	PAP	22-23	14	1,10,775	1,10,126	1,04,128
1480	Coil	PAP	22-23	19	4,62,020	4,59,315	4,41,229
1481	PTFE	PAP	22-23	19	8,52,415	8,47,423	8,14,056
1482	Pipe	PAP	22-23	14	2,85,624	2,83,951	2,68,486
1483	Pipe	PAP	22-23	14	5,01,322	4,98,386	4,71,243
1484	Flanges & Elbow	PAP	22-23	14	1,43,286	1,42,447	1,34,689
1485	Pipe	PAP	22-23	14	7,63,276	7,58,806	7,17,479
1486	Flanges	PAP	22-23	14	71,322	70,904	67,042
1487	Elbow, Nipple	PAP	22-23	9	23,871	23,732	21,723
1488	Pipe, Flanges	PAP	22-23	14	1,19,831	1,19,129	1,12,641
1489	Pump	PAP	22-23	14	2,10,647	2,09,413	1,98,008



S. No.	Description	Plant	Year of Capitalization	Residual Life (Yrs)	Gross Block as at 31.03.2023 (₹)	Net Block as at 31.03.2023 (₹)	Fair Market Value (₹)
1490	Pump	PAP	22-23	14	1,98,650	1,97,487	1,86,731
1491	PTFE	PAP	22-23	14	76,910	76,460	72,296
1492	PTFE	PAP	22-23	9	8,370	8,321	7,616
1493	PTFE	PAP	22-23	19	3,91,258	3,88,967	3,73,652
1494	PTFE	PAP	22-23	14	55,066	54,744	51,762
1495	PTFE	PAP	22-23	9	44,053	43,795	40,088
1496	Bearing	PAP	22-23	14	1,11,359	1,10,707	1,04,677
1497	Gasket	PAP	22-23	14	63,271	62,901	59,475
1498	Nut Bolt washer	PAP	22-23	14	65,680	65,295	61,739
1499	Hardware Accessories	PAP	22-23	14	65,906	65,520	61,952
1500	Manual Ball Valve	PAP	22-23	14	2,51,888	2,50,413	2,36,774
1501	Coating	PAP	22-23	14	1,46,369	1,45,512	1,37,587
1502	Pipe	PAP	22-23	14	4,40,344	4,37,765	4,13,923
1503	Pipe	PAP	22-23	14	5,55,965	5,52,709	5,22,607
1504	Pipe	PAP	22-23	14	1,36,211	1,35,413	1,28,038
1505	Elbow	PAP	22-23	14	56,073	55,744	52,708
1506	Pump	PAP	22-23	14	1,68,437	1,67,451	1,58,331
1507	Pump	PAP	22-23	14	1,00,926	1,00,335	94,870
1508	Pipe	PAP	22-23	14	3,34,653	3,32,693	3,14,574
1509	Pipe	PAP	22-23	14	1,38,524	1,37,713	1,30,213
1510	Pipe	PAP	22-23	14	4,08,204	4,05,814	3,83,712
1511	Flanges	PAP	22-23	14	62,074	61,710	58,349
1512	PTFE	PAP	22-23	14	2,08,330	2,07,110	1,95,830
1513	Manual Ball Valve	PAP	22-23	14	1,59,675	1,58,740	1,50,095
1514	Flanges	PAP	22-23	19	3,48,691	3,46,649	3,33,000
1515	Copper Boned Rod	PAP	22-23	19	8,61,774	8,56,727	8,22,994
1516	Transmitter, Compression cable	PAP	22-23	19	4,97,776	4,94,861	4,75,376
1517	Packing Machine	PAP	22-23	14	2,32,860	2,31,496	2,18,888
1518	ETFE	PAP	22-23	19	13,46,815	13,38,928	12,86,208
1519	PTFE	PAP	22-23	19	10,35,684	10,29,619	9,89,078
1520	Pipe Line - Isometric work	PAP	22-23	14	29,52,043	29,34,755	27,74,920
1521	Pipe Line - Isometric work	PAP	22-23	14	6,83,756	6,79,752	6,42,730
1522	Pipe Line - Isometric work	PAP	22-23	14	8,83,349	8,78,176	8,30,348
1523	Installation of LT Power	PAP	22-23	14	1,53,666	1,52,767	1,44,446
1524	Installation of LT Power	PAP	22-23	14	1,43,860	1,43,018	1,35,229
1525	Chequered Plate	PAP	22-23	19	9,06,693	9,01,383	8,65,892
1526	PTFE	PAP	22-23	14	50,564	50,268	47,530
1527	Flanges	PAP	22-23	14	1,10,495	1,09,848	1,03,866
1528	Fabrication Work	PAP	22-23	14	55,886	55,559	52,533
1529	Digital Indicator Controller	PAP	22-23	9	46,897	46,622	42,676
1530	Flowrate Indicator	PAP	22-23	14	84,069	83,577	79,025
1531	Pipe, Flanges	PAP	22-23	14	76,969	76,518	72,351
1532	Pipe	PAP	22-23	14	1,36,710	1,35,909	1,28,507
1533	Pipe	PAP	22-23	14	97,468	96,898	91,620
1534	Nut Bolt	PAP	22-23	14	54,689	54,368	51,407

S. No.	Description	Plant	Year of Capitalization	Residual Life (Yrs)	Gross Block as at 31.03.2023 (₹)	Net Block as at 31.03.2023 (₹)	Fair Market Value (₹)
1535	Pipe	PAP	22-23	14	3,98,555	3,96,221	3,74,642
1536	Fire Hydrant Valve	PAP	22-23	14	1,00,203	99,616	94,191
1537	PTEF	PAP	22-23	19	5,60,889	5,57,604	5,35,649
1538	Pipe	PAP	22-23	14	3,46,411	3,44,382	3,25,626
1539	Elbow	PAP	22-23	14	1,17,434	1,16,747	1,10,388
1540	Elbow	PAP	22-23	14	88,886	88,365	83,553
1541	Elbow	PAP	22-23	14	84,761	84,265	79,675
1542	Nut Bolt	PAP	22-23	9	31,669	31,483	28,819
1543	Elbow	PAP	22-23	14	1,28,459	1,27,706	1,20,751
1544	Coupling	PAP	22-23	14	86,283	85,778	81,106
1545	Nipple	PAP	22-23	9	25,324	25,176	23,045
1546	SORF/BLRF	PAP	22-23	14	2,33,411	2,32,044	2,19,406
1547	Clamp	PAP	22-23	9	15,542	15,451	14,143
1548	Pump Fitting & Foundation Bolt fab work	PAP	22-23	14	2,37,790	2,36,397	2,23,522
1549	Erection Work	PAP	22-23	Charges	7,96,082	7,91,420	-
1550	GI Railing work with hole drilling	PAP	22-23	19	3,84,765	3,82,511	3,67,450
1551	Erection Work	PAP	22-23	Charges	7,16,028	7,11,835	-
1552	Flanges	PAP	22-23	14	1,83,626	1,82,551	1,72,609
1553	Pipe	PAP	22-23	14	4,41,073	4,38,490	4,14,609
1554	PTEF	PAP	22-23	9	43,245	42,992	39,353
1555	PTEF	PAP	22-23	14	1,84,132	1,83,054	1,73,084
1556	Pipe	PAP	22-23	14	5,06,230	5,03,266	4,75,856
1557	Pipe	PAP	22-23	14	3,29,203	3,27,275	3,09,450
1558	Pipe	PAP	22-23	14	4,24,252	4,21,767	3,98,797
1559	Corrugated Sheet	PAP	22-23	Building	4,24,462	4,21,976	-
1560	PTEF	PAP	22-23	14	1,76,441	1,75,408	1,65,855
				Total	1,50,40,62,643	80,03,04,380	82,00,84,453
						Say	Rs. 82.01 Crs

7.2 PLANT AND MACHINERY-CWIP

S. No.	Description	Age (Yrs)	Residual Life (Yrs)	Cost incurred (₹)	Fair Market Value (₹)
1	CWIP ADAM	1	Building	40,12,000	-
2	CWIP - CF II Expansion	1	19	40,15,768	34,51,553
3	CWIP DEMAP EXTENSION	1	Building	7,63,563	-
4	CWIP- Fire Equ.(Hydrent System)	1	19	11,40,000	9,79,830
5	CWIP MA-I Expansion	1	19	21,65,614	18,61,345
6	CWIP - MEE	1	19	11,60,919	9,97,810



S. No.	Description	Age (Yrs)	Residual Life (Yrs)	Cost Incurred (₹)	Fair Market Value (₹)
7	CWIP - NB	1	Building	3,60,000	-
8	Cwip Non Factory Building	1	Building	1,74,03,058	-
9	CWIP - Sludge Yard	1	Building	9,67,321	-
10	DASADA PROJECT WIP	1	19	7,88,84,449	6,78,01,184
11	MDA-Y CWIP Factory Building	1	Building	59,87,502	-
12	MDA-Y CWIP Plant & Machinery	1	19	10,10,144	8,68,219
13	MMDPA WIP PROJECT	1	19	6,46,51,105	5,55,67,624
14	NBSA PROJECT WIP	1	19	3,71,682	3,19,461
15	ODB2 EXPANSION CWIP Factory Building	1	Building	1,96,73,884	-
16	ODB2 EXPANSION CWIP Plant & Machinery	1	19	3,34,33,463	2,87,36,061
17	PERGA FAST-WIP	1	Building	89,53,543	-
			Total	24,49,54,015	16,05,83,087
				Say	₹ 16.06 Crs

SUMMARY

Particulars	Fair Market Value	Realizable Value	Distress Sale Value
Plant & Machinery	₹ 82.01 Crores	₹ 69.71 Crores	₹ 57.41 Crores
Plant & Machinery-CWIP	₹ 16.06 Crores	₹ 13.65 Crores	₹ 11.24 Crores
Total	₹ 98.07 Crores	₹ 83.36 Crores	₹ 68.65 Crores

8. DECLARATION CUM UNDERTAKING (Annexure-IV):-

I, Umang Patel son of Shri. Ashwin Patel do hereby solemnly affirm and state that:

- a) I am a citizen of India.
- b) I will not undertake valuation of any assets in which I have a direct or indirect interest or become so interested at any time during a period of three years prior to my appointment as valuer or three years after the valuation of assets was conducted by me.
- c) The information furnished in my valuation report dated **27.11.2023** is true and correct to the best of my knowledge and belief and I have made an impartial and true valuation of the property.
- d) I/ my authorized representative has personally inspected the property on **04.09.2023**. The work is not sub - contracted to any other valuer and carried out by myself.
- e) Valuation report is submitted in the format as prescribed by the bank.
- f) I have not been depanelled / delisted by any other bank and in case any such depanelment by other banks during my empanelment with you, I will inform you within 3 days of such depanelment.
- g) I have not been removed / dismissed from service / employment earlier.
- h) I have not been convicted of any offence and sentenced to a term of imprisonment
- i) I have not been found guilty of misconduct in my professional capacity.
- j) I have not been declared to be unsound mind
- k) I am not an undischarged bankrupt or has not applied to be adjudicated as a bankrupt.
- l) I am not an undischarged insolvent.
- m) I have not been levied a penalty under section 271J of Income-tax Act, 1961 (43 of 1961) and time limit for filing appeal before Commissioner of Income-tax (Appeals) or Income-tax Appellate Tribunal, as the case may has expired, or such penalty has been confirmed by Income-tax Appellate Tribunal, and five years have not elapsed after levy of such penalty
- n) I have not been convicted of an offence connected with any proceeding under the Income Tax Act 1961, Wealth Tax Act 1957 or Gift Tax Act 1958 and
- o) My PAN Card number as applicable is AMKPP9341F
- p) I undertake to keep you informed of any events or happenings which would make me ineligible for empanelment as a valuer.
- q) I have not concealed or suppressed any material information, facts and records and I have made a complete and full disclosure



- r) I have read the Handbook on Policy, Standards and procedure for Real Estate Valuation, 2011 of the IBA and this report is in conformity to the "Standards" enshrined for valuation in the Part - B of the above handbook to the best of my ability.
- s) I have read the International Valuation Standards (IVS) and the report submitted to the Bank for the respective asset class is in conformity to the "Standards" as enshrined for valuation in the IVS in "General Standards" and "Asset Standards" as applicable. The valuation report is submitted in the prescribed format of the bank.
- t) I abide by the Model Code of Conduct for empanelment of valuer in the Bank. (Annexure V - A signed copy of same to be taken and kept along with this declaration)
- u) I am valuer registered with Insolvency & Bankruptcy Board of India (IBBI)
- v) My CIBIL Score and credit worthiness is as per Bank's guidelines.
- w) I am Director of the company, who is competent to sign this valuation report.
- x) I will undertake the valuation work on receipt of Letter of Engagement generated from the system (i.e., LLMS / LOS) only.

For preparation of valuation report we have relied upon following information provided to us by the company / Bank and other various sources as well as our data bank:

1. The valuation of the machinery available at the said location is worked out by 'as is where is basis'. After considering its present replacement value, the residual life of the particular machinery.
2. The maintenance up-keep and the present condition of the said machinery is considered while estimating the present realizable value for the particular machinery.
3. Information available on internet on the subject matter.
4. Our engineer visited the company/plant on September 04th, 2023 and has taken photographs of said Machinery which are attached to this report. Technical changes/obsolescence is not considered while preparing this report.
5. Further, I hereby provide the following information.

S. No.	Particulars	Valuer comment
1	Purpose of valuation and appointing authority	To assess the FMV, RV & DSV of Plant & Machinery for loan purpose from State Bank of India, SME-Ghatkopar Branch
2	Identity of the Valuer and any other experts involved in the valuation;	Umang Patel-Regd. Valuer Avinash Pandey- Valuation Engineer
3	Disclosure of Valuer interest or conflict, if any;	We have no interest, either direct or indirect, in the property valued. Further to state that we do not have relation or any connection with property owner / applicant directly or indirectly. Further to state that we are an independent Valuer and in no way related to property owner / applicant
4	Date of appointment, valuation date and date of report;	Date of Appointment-04.09.2023 Valuation Date-27.11.2023 Date of Report-27.11.2023
5	Inspections and/or investigations undertaken;	Physical Inspection done on date 04.09.2023
6	Nature and sources of the information used or relied upon;	FAR and Audited Balance Sheet.
7	Procedures adopted in carrying out the valuation and valuation standards followed;	Cost Approach (Replacement cost Method)
8	Restrictions on use of the report, if any;	This valuation is for the use of the party to whom it is addressed and for no other purpose. No responsibility is accepted to any third party who may use or rely on the whole or any part of this valuation. The valuer has no pecuniary interest that would conflict with the proper valuation of the



S. No.	Particulars	Valuer comment
		property.
9	Caveats, limitations, and disclaimers to the extent they explain or elucidate the limitations faced by valuer, which shall not be for the purpose of limiting his responsibility for the valuation report.	Attached

Date: 27.11.2023

Place: Mumbai

For Vastukala Consultants (I) Pvt. Ltd.

**UMANG
ASHWIN
PATEL**

Digitally signed by UMANG ASHWIN PATEL
DN: c=IN, o=VASTUKALA CONSULTANTS (I)
PRIVATE LIMITED, ou=ADMIN,
2.5.4.20=084f6bcfaaa5d2df381fb7849b7f719
82ef68198bca6b66f470a852d96e2c5ff,
postalCode=400069, st=Maharashtra,
serialNumber=0562a4861d25afb9c61a8957
0a25da8b73e945bd0c50f8a180dc06f47ff00
73e, cn=UMANG ASHWIN PATEL
Date: 2023.11.27 13:23:16 +05'30'

Umang Ashwin Patel

Regd. Valuer

Chartered Engineer (India)

Reg. No. IBBI/RV/04/2019/10803

Think.Innovate.Create



Vastukala Consultants (I) Pvt. Ltd.

Think.Innovate.Create

An ISO 9001:2015 Certified Company

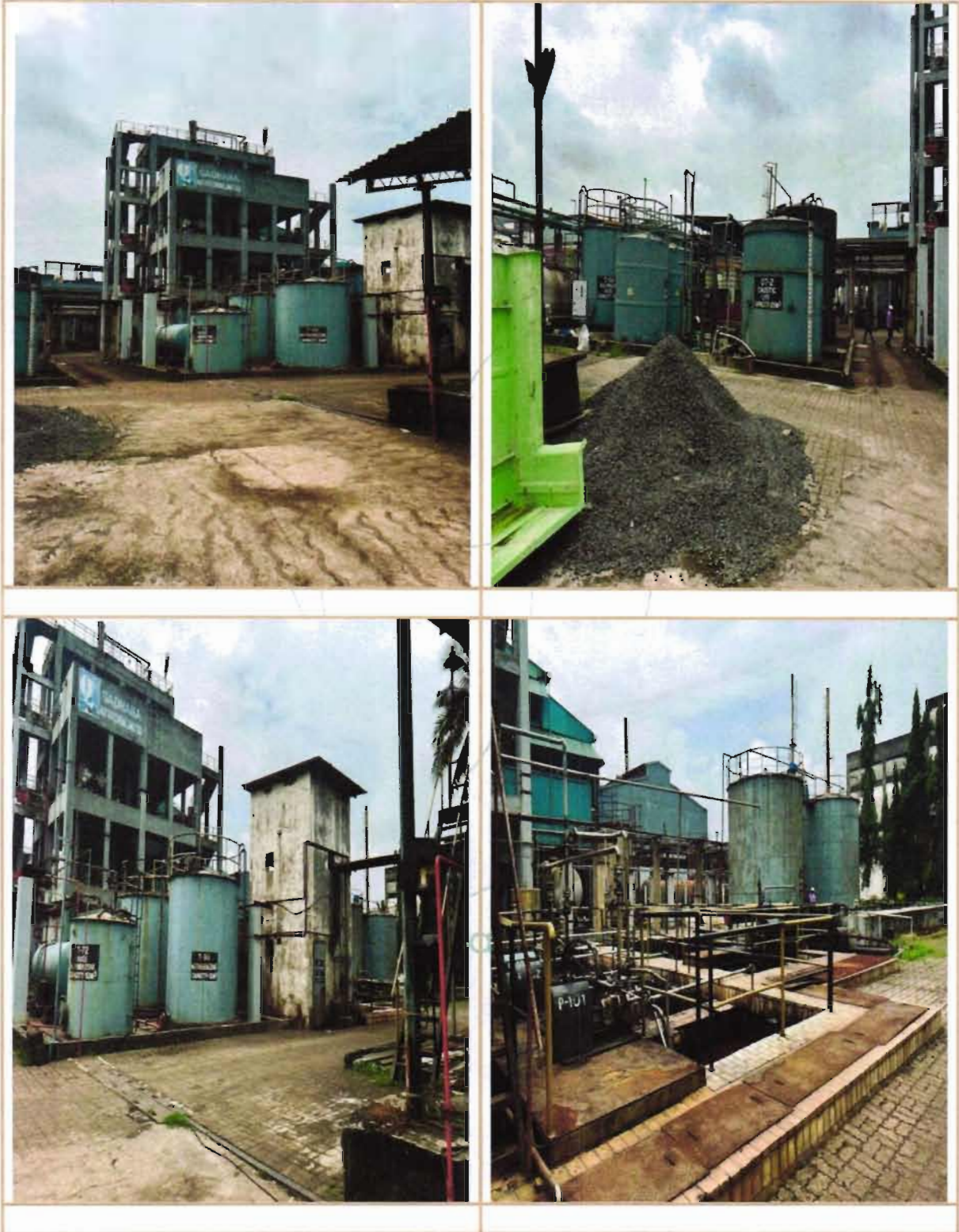
www.vastukala.org



9. ACTUAL SITE PHOTOGRAPHS



ACTUAL SITE PHOTOGRAPHS

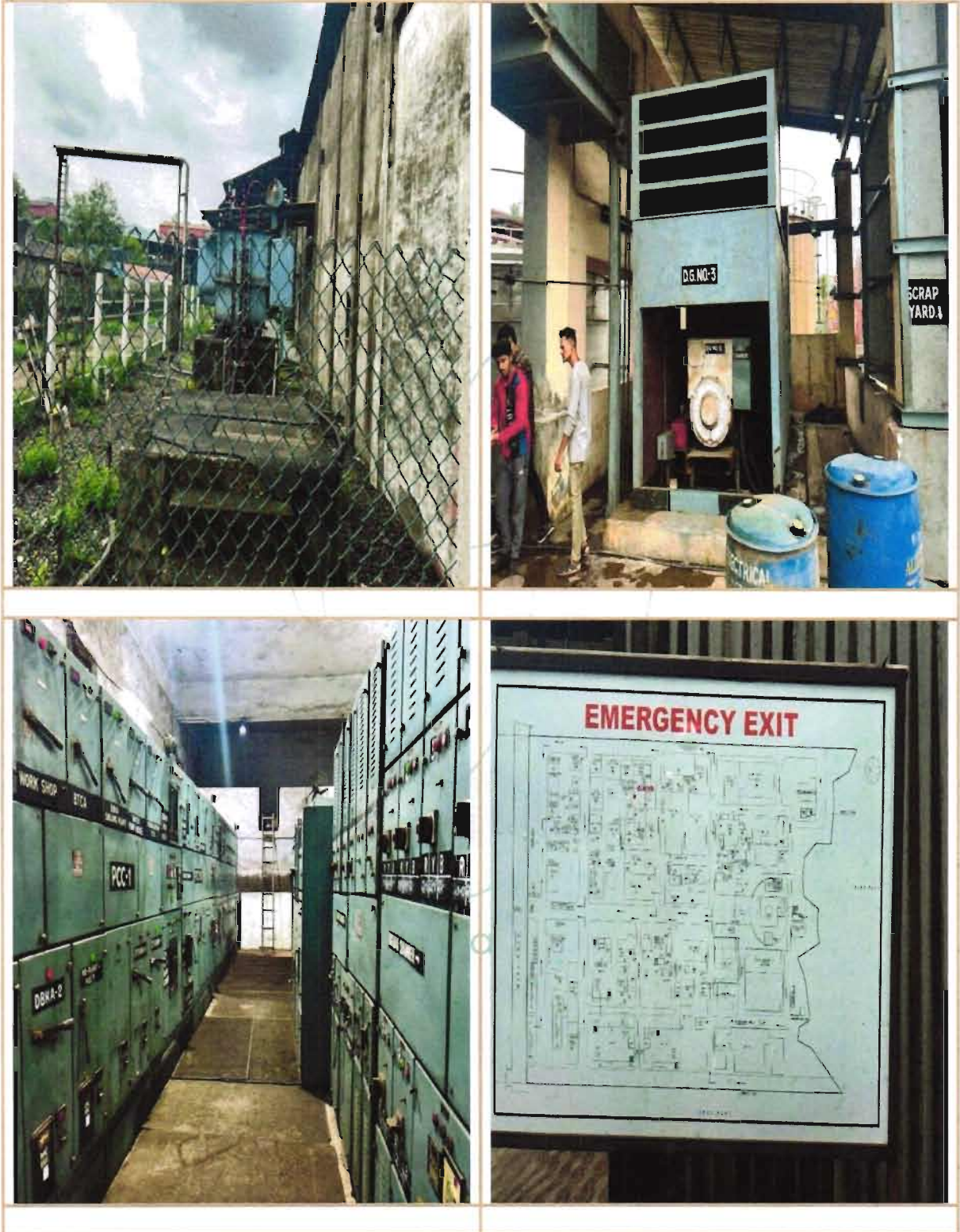


ACTUAL SITE PHOTOGRAPHS



16

ACTUAL SITE PHOTOGRAPHS



ACTUAL SITE PHOTOGRAPHS



ACTUAL SITE PHOTOGRAPHS



Think Innovate Create

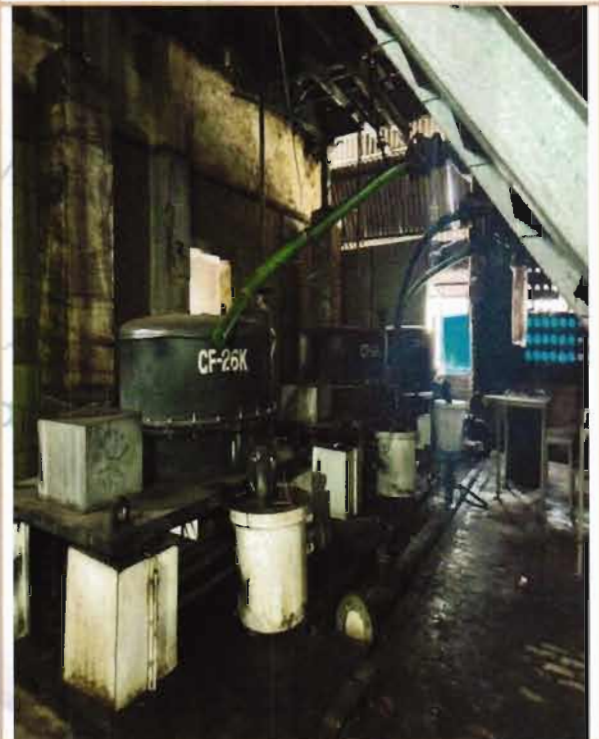
Vastukala Consultants (I) Pvt. Ltd.

An ISO 9001:2015 Certified Company

www.vastukala.org

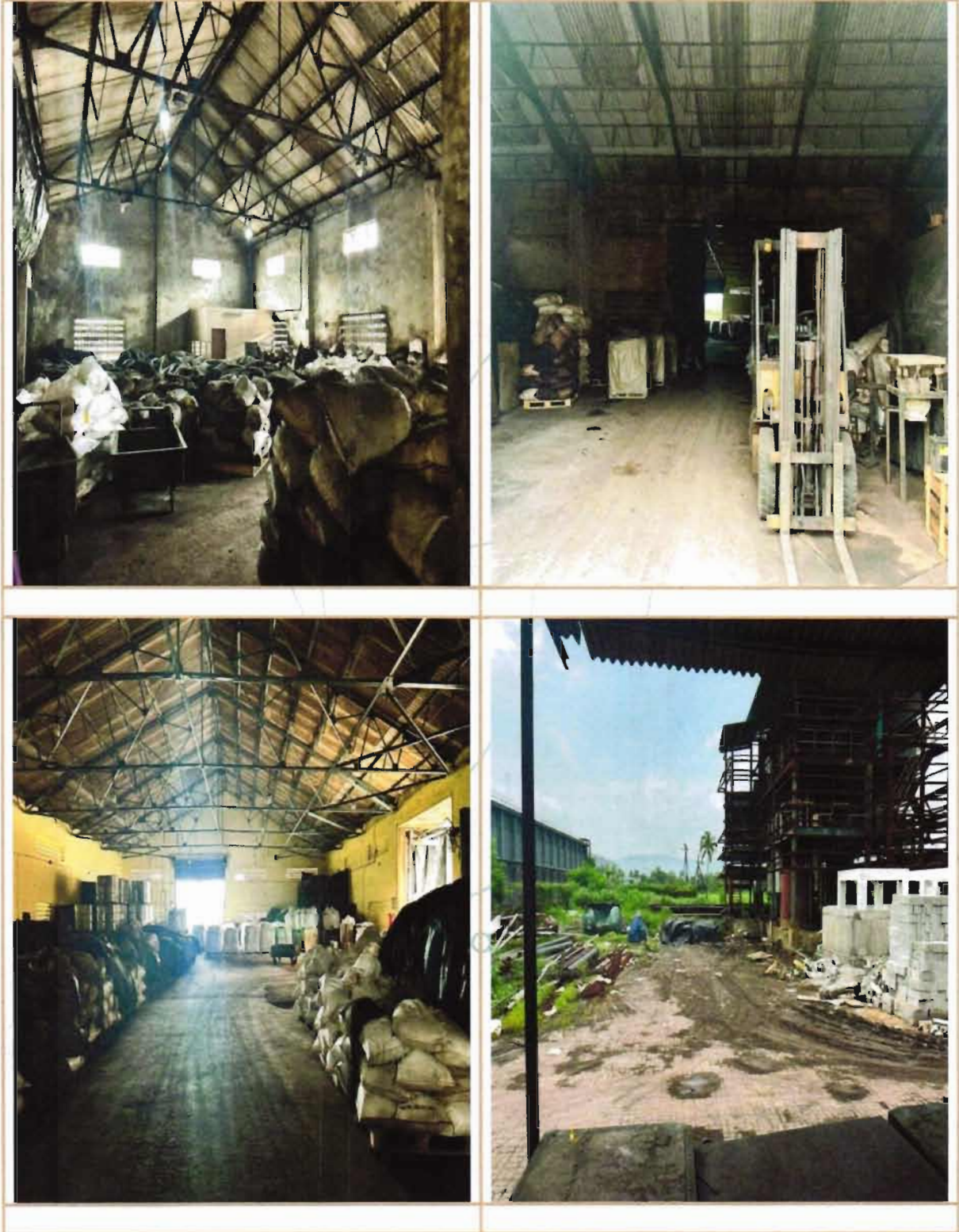


ACTUAL SITE PHOTOGRAPHS



13

ACTUAL SITE PHOTOGRAPHS



ACTUAL SITE PHOTOGRAPHS



Think. Innovate. Create

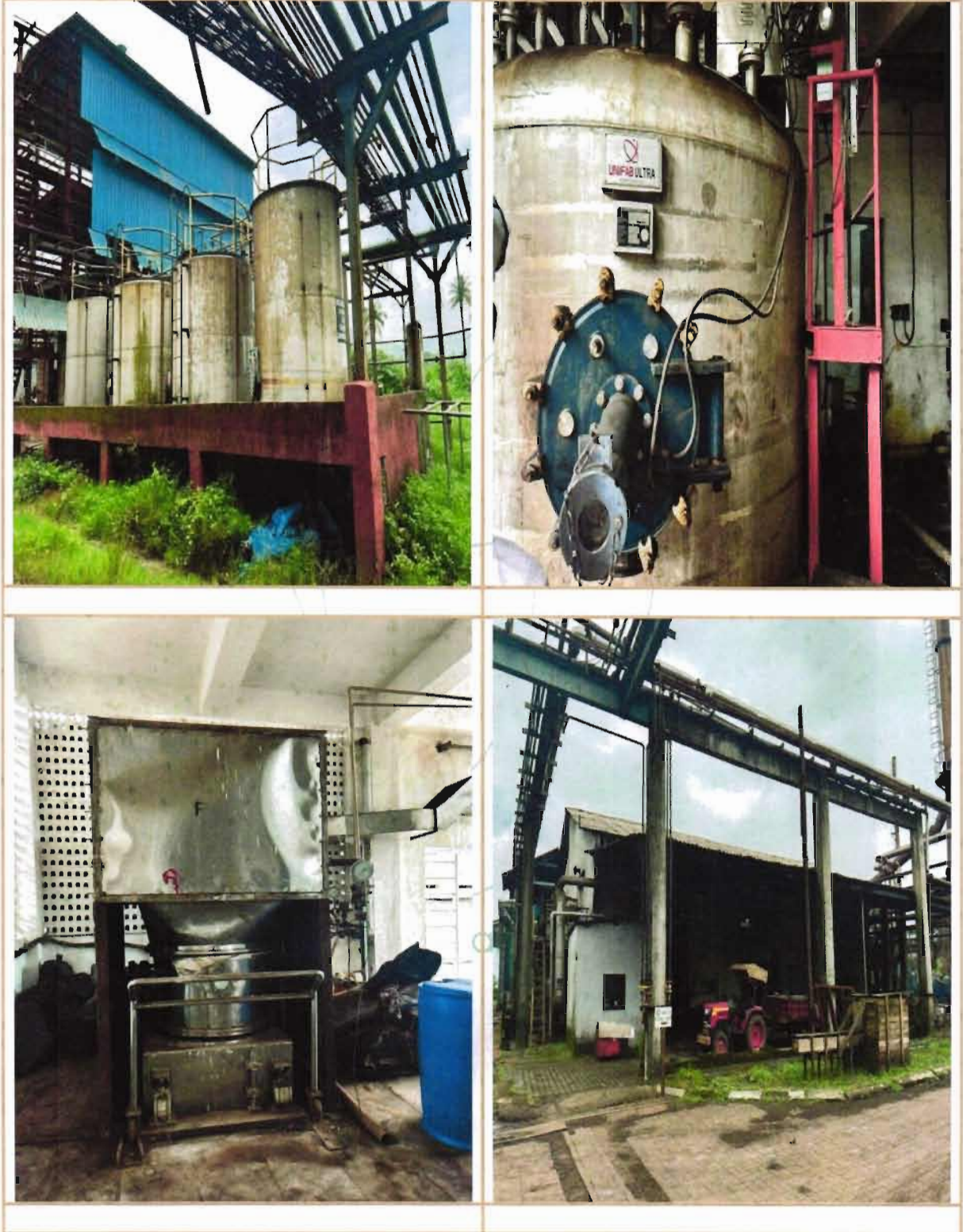
Vastukala Consultants (I) Pvt. Ltd.

An ISO 9001:2015 Certified Company

www.vastukala.org



ACTUAL SITE PHOTOGRAPHS



ACTUAL SITE PHOTOGRAPHS



ACTUAL SITE PHOTOGRAPHS



ACTUAL SITE PHOTOGRAPHS



ACTUAL SITE PHOTOGRAPHS



ACTUAL SITE PHOTOGRAPHS



ACTUAL SITE PHOTOGRAPHS



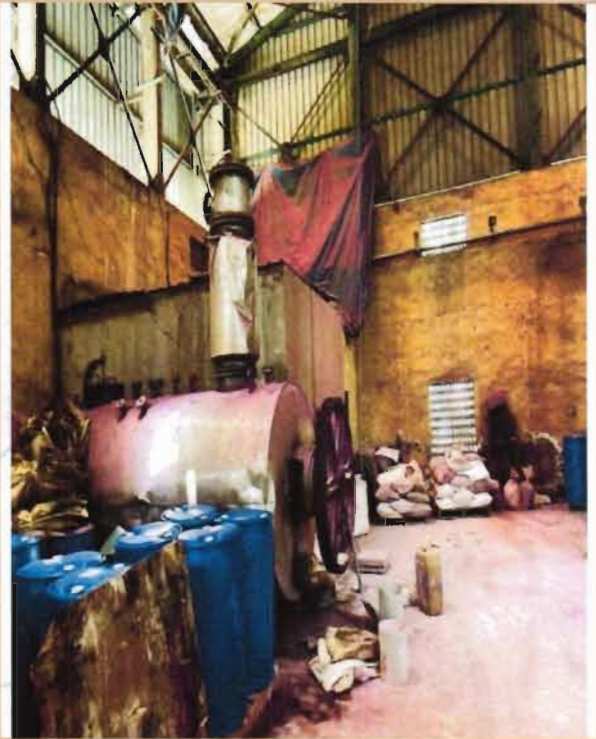
ACTUAL SITE PHOTOGRAPHS



ACTUAL SITE PHOTOGRAPHS



ACTUAL SITE PHOTOGRAPHS



ACTUAL SITE PHOTOGRAPHS



Think Innovate.Create

Vastukala Consultants (I) Pvt. Ltd.

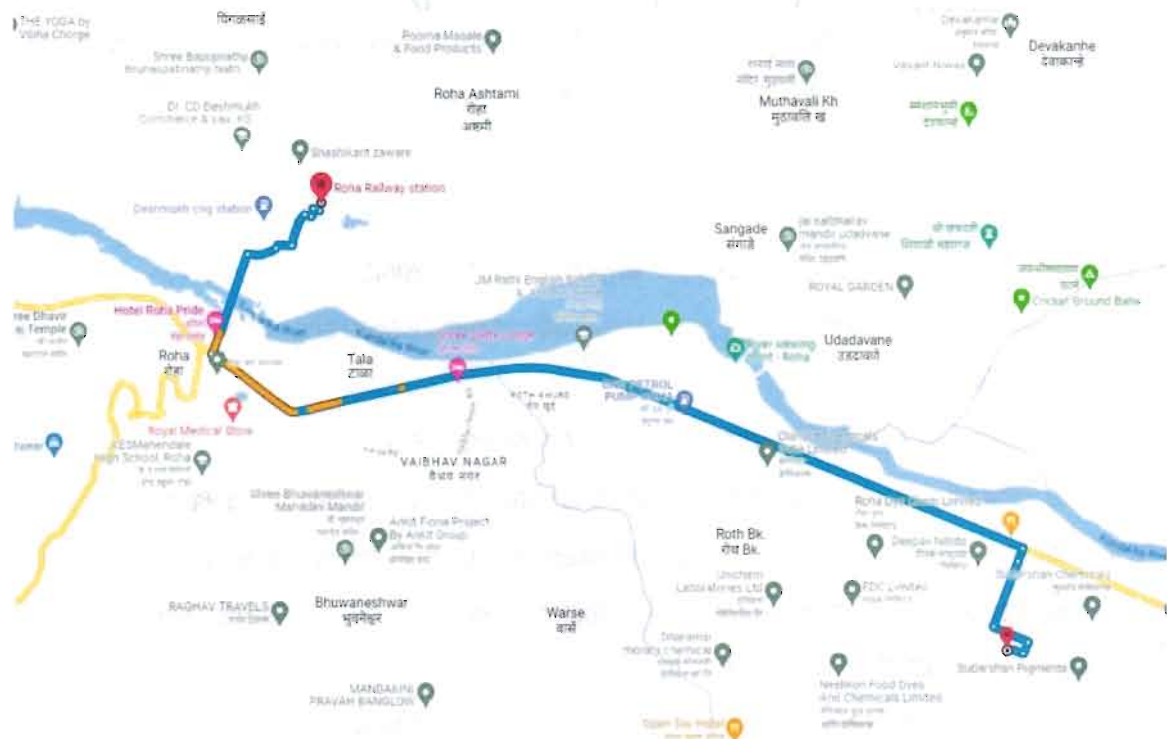
An ISO 9001:2015 Certified Company

www.vastukala.org



10. ROUTE MAP OF THE PROPERTY

Site u/r



Longitude Latitude: 18°25'32.6"N 73°09'31.2"E

Note: The Blue line shows the route to site from nearest railway station (Roha- 6.5 Km.)



11. ASSUMPTIONS, CAVEATS, LIMITATION AND DISCLAIMERS

- We assume no responsibility for matters of legal nature affecting the assets appraised or the title thereto, nor do we render our opinion as to the title, which is assumed to be good and marketable.
- The assets are valued as though under responsible ownership.
- It is assumed that the assets are free of liens and encumbrances.
- It is assumed that there are no hidden or unapparent conditions of the subsoil or structure that would render it more or less valuable. No responsibility is assumed for such conditions or for engineering that might be required to discover such factors.
- There is no direct/ indirect interest in the assets valued.
- The rates for valuation of the assets are in accordance with the Govt. Approved rates and prevailing market rates.
- The statements of fact presented in the report are correct to the best of the valuer's knowledge.
- The "valuer/ appraiser" word implies the valuer him/herself or any authorised representative of the valuer.
- The analysis & conclusions are limited only by the reported assumptions & conditions.
- It is hereby stated that the valuer has followed the professional requirements and standards in this document.
- The valuer has no interest in the subject assets.
- The value's fee is not contingent upon any aspect of the report.
- The valuation was performed in accordance with an ethical code and performance standards.
- The valuer has satisfied professional education requirements.
- The valuer has experience in the location and category of the assets being valued.
- Both legal description and dimension are taken from sources thought to be authoritative, however, no responsibility is assumed for either unless a survey, by a competent surveyor or engineer, is furnished to the appraiser.
- This report is valid only, subject to a legal search furnished by the Bank's lawyer or legal advisor, ascertaining the ownership & genuineness of the document and clear & marketable title in the name of the present owner/owners.

- No responsibility is to be assumed for matters legal in nature, nor is any opinion of title rendered by this report. Good title is assumed.
- In no events shall the valuer be held responsible or liable for special, direct or consequential damages, as the assignment has been completed with best efforts, available knowledge & in good intentions following professional ethics.
- I have upon the invoices provided to us by the Client for the technical specification as well as details of manufacturer for the machineries or equipment. I have assumed that no major replacement of components in any of the machineries has been done unless otherwise specific details provided to me.
- Valuation is done on physical verification and external inspection basis. The valuer does not bear any responsibility for any error which is due to the assumptions made for working condition or internal part of machines which are not inspectable without dismantling.
- The Valuer, by reasons of this report, is not required to give testimony in court, with reference to the appraised assets unless arrangements for such contingency have been previously agreed upon.
- The analysis and additional data (like company information, micro-market data) of this report is based on Publicly available information, Industry Benchmark / Standards or my Professional Judgment where the information has not been furnished by the company.
- For the purpose of this exercise, I have assumed (where sufficient ownership data has not been provided) that the assets considered under this exercise are owned by the Company and has a clear and marketable title and is free from any legal and physical encumbrances, disputes, claims and other statutory liabilities and the requisite planning approvals from appropriate authorities has already been pursued; if any, I do not bear any responsibility for the same.
- The condition assessment and the estimation of useful life is based on industry standards as any visual observations / review of maintenance was beyond the scope of work.
- The inspection, due diligence and condition assessment of the asset was made by individuals generally familiar with valuation assessment of such assets. However, I do not opine nor am I responsible for its conformity to any health, safety, environmental or any other regulatory requirements that were not readily apparent to my team of experts during their inspection.

- This valuation is valid only for the purpose mentioned in this report; and neither intended nor valid to be used for any other purposes.
- The valuation is not a precise science and the conclusions arrived at in many cases will be subjective and dependent on the exercise of individual judgement. Hence, there is no indisputable single value. Whilst I consider my conclusions to be both reasonable and defensible based on the information available to us, others may place a different value based on the same information.
- I reserve my rights to change my conclusion at later date, if it is found that the data provided to us was not reliable, complete or accurate in any material aspect.
- For the purpose of this valuation report, the fair market value and fair value of the assets may be considered to be synonymous.
- All figures are in INR, unless mentioned otherwise. Further, round off errors (if any) arising from calculations or conversions to millions/ other units have negligible impact on the final value, therefore, can be ignored.

Think.Innovate.Create



12. DEFINITION OF VALUE FOR THIS SPECIFIC PURPOSE

This exercise is to assess **Fair Market Value** of the property under reference as on **27th November 2023**.

The term **Fair Market Value** is defined as

“The most probable price, as of a specified date, in cash, terms equivalent to cash, or in other precisely revealed terms for which the specified property rights would sell after reasonable exposure in a competitive market under all conditions requisite to a fair sale, with the buyer and seller each acting prudently knowledgeably and for self-interest assuming that neither is under undue duress”.

Fundamental assumptions and conditions presumed in this definition are:

1. Buyer and seller are motivated by self-interest.
2. Buyer and seller are well informed and are acting prudently.
3. The property is exposed for a reasonable time on the open market.
4. Payment is made in cash or equivalent or in specified financing terms.

DECLARATION OF PROFESSIONAL FEES CHARGED

We hereby declare that our professional fees are not contingent upon the valuation findings. However, if the statute AND/OR client demands that, the fees should be charged on the percentage of assessed value then, with the full knowledge of the AND/OR end user, it is being charged accordingly.

Think.Innovate.Create

13. VALUATION OF PLANT & MACHINERY

Considering various parameters recorded, existing economic scenario, and the information that is available with reference to the industrial development and method selected for valuation, we are of the opinion that, the assets can be assessed and valued for particular purpose at:

Particulars	Fair Market Value	Realizable Value	Distress Sale Value
Plant & Machinery	₹ 82.01 Crores	₹ 69.71 Crores	₹ 57.41 Crores
Plant & Machinery-CWIP	₹ 16.06 Crores	₹ 13.65 Crores	₹ 11.24 Crores
Total	₹ 98.07 Crores	₹ 83.36 Crores	₹ 68.65 Crores

Place: Mumbai

Date: 27.11.2023

For Vastukala Consultants (I) Pvt. Ltd.

**UMANG
ASHWIN
PATEL**

Digitally signed by UMANG ASHWIN PATEL
DN: c=IN, o=VASTUKALA CONSULTANTS (I) PRIVATE LIMITED, ou=ADMIN, 2.5.4.20=084f6bcfaaa5d2df381fb7849bff7f982ef68198bca6b66f470a852d96e2c5ff, postalCode=400069, st=Maharashtra, serialNumber=0562a4861d25afb9c61a89570a25da8b73e945bd0c50f8a180dc06f47ff0073e, cn=UMANG ASHWIN PATEL
Date: 2023.11.27 13:23:47 +05'30'

Umang Ashwin Patel

Govt. Reg. Valuer

Chartered Engineer (India)

Reg. No. CAT-VII-A-5062

Think.Innovate.Create