

STAMP OF APPROVAL 01/12

PROPOSED COMMERCIAL CUM RESIDENTIAL BUILDING PLAN ON PLOT NO. 27+28/A/B/1, S. NO. 804/B+804/A/4+804/A-5+803/27+28 AT NASHIK SHIVAR.

FOR:- 1) SHREE. JAYESH. K. PAREKH AND OTHERS THROUGH G.P.A. HOLDER SHREEJI LIFESPACES.

APPROVED

The Plans submitted for consideration are approved in accordance with the accompanying documents. Certificate No. 3/18/2024

Executive Engineer, Nashik Municipal Corporation

LOCATION PLAN, SITE PLAN, SECTION AND ELEVATION.

FORM OF STATEMENT

BUILDING TYPE	FLOOR	TOTAL BUILT UP AREA OF FLOOR AS PER OUTER CONSTRUCTION LINE		FSI	ANCILLARY FSI
		Area (sq.m.)	Area (sq.m.)		
COMMERCIAL (WING C)	GROUND	1235.40	688.76	688.76	711.01
	1ST	918.71	510.39	510.39	408.32
	2ND	918.71	510.39	510.39	408.32
	3RD	918.71	510.39	510.39	408.32
	4TH	918.71	510.39	510.39	408.32
	5TH	918.71	510.39	510.39	408.32
	6TH	918.71	510.39	510.39	408.32
RESIDENTIAL (WING A+WING B)	GROUND + AMENITIES	134.48	84.05	84.05	50.43
	4TH	834.40	521.50	521.50	312.90
	6TH	834.40	521.50	521.50	312.90
	8TH	834.40	521.50	521.50	312.90
RESIDENTIAL (WING A)	10TH	834.40	521.50	521.50	312.90
	11TH	834.40	521.50	521.50	312.90
	12TH (REFUGE)	692.83	414.27	414.27	248.56
TOTAL	14826.99	8698.20	8698.20	6128.79	

PROFORMA - A

AREA STATEMENT	IN SQ. MT.
1. Area of plot as per ground basis (4552.26X11500)	5227.73
(Minimum dimensions to be considered)	515.64
2. Deductions for (a) 17% O/S retained	867.73
(b) as per measurement sheet	
3. Deductions for (a) 17% O/S retained	867.73
(b) as per measurement sheet	
4. Deductions for (a) 17% O/S retained	867.73
(b) as per measurement sheet	
5. Deductions for (a) 17% O/S retained	867.73
(b) as per measurement sheet	
6. Deductions for (a) 17% O/S retained	867.73
(b) as per measurement sheet	
7. Deductions for (a) 17% O/S retained	867.73
(b) as per measurement sheet	
8. Deductions for (a) 17% O/S retained	867.73
(b) as per measurement sheet	
9. Deductions for (a) 17% O/S retained	867.73
(b) as per measurement sheet	
10. Deductions for (a) 17% O/S retained	867.73
(b) as per measurement sheet	
11. Deductions for (a) 17% O/S retained	867.73
(b) as per measurement sheet	
12. Deductions for (a) 17% O/S retained	867.73
(b) as per measurement sheet	
13. Deductions for (a) 17% O/S retained	867.73
(b) as per measurement sheet	
14. Deductions for (a) 17% O/S retained	867.73
(b) as per measurement sheet	
15. Deductions for (a) 17% O/S retained	867.73
(b) as per measurement sheet	
16. Deductions for (a) 17% O/S retained	867.73
(b) as per measurement sheet	
17. Deductions for (a) 17% O/S retained	867.73
(b) as per measurement sheet	
18. Deductions for (a) 17% O/S retained	867.73
(b) as per measurement sheet	
19. Deductions for (a) 17% O/S retained	867.73
(b) as per measurement sheet	
20. Deductions for (a) 17% O/S retained	867.73
(b) as per measurement sheet	
21. Deductions for (a) 17% O/S retained	867.73
(b) as per measurement sheet	
22. Deductions for (a) 17% O/S retained	867.73
(b) as per measurement sheet	
23. Deductions for (a) 17% O/S retained	867.73
(b) as per measurement sheet	
24. Deductions for (a) 17% O/S retained	867.73
(b) as per measurement sheet	
25. Deductions for (a) 17% O/S retained	867.73
(b) as per measurement sheet	
26. Deductions for (a) 17% O/S retained	867.73
(b) as per measurement sheet	
27. Deductions for (a) 17% O/S retained	867.73
(b) as per measurement sheet	
28. Deductions for (a) 17% O/S retained	867.73
(b) as per measurement sheet	
29. Deductions for (a) 17% O/S retained	867.73
(b) as per measurement sheet	
30. Deductions for (a) 17% O/S retained	867.73
(b) as per measurement sheet	
31. Deductions for (a) 17% O/S retained	867.73
(b) as per measurement sheet	
32. Deductions for (a) 17% O/S retained	867.73
(b) as per measurement sheet	
33. Deductions for (a) 17% O/S retained	867.73
(b) as per measurement sheet	
34. Deductions for (a) 17% O/S retained	867.73
(b) as per measurement sheet	
35. Deductions for (a) 17% O/S retained	867.73
(b) as per measurement sheet	
36. Deductions for (a) 17% O/S retained	867.73
(b) as per measurement sheet	
37. Deductions for (a) 17% O/S retained	867.73
(b) as per measurement sheet	
38. Deductions for (a) 17% O/S retained	867.73
(b) as per measurement sheet	
39. Deductions for (a) 17% O/S retained	867.73
(b) as per measurement sheet	
40. Deductions for (a) 17% O/S retained	867.73
(b) as per measurement sheet	
41. Deductions for (a) 17% O/S retained	867.73
(b) as per measurement sheet	
42. Deductions for (a) 17% O/S retained	867.73
(b) as per measurement sheet	
43. Deductions for (a) 17% O/S retained	867.73
(b) as per measurement sheet	
44. Deductions for (a) 17% O/S retained	867.73
(b) as per measurement sheet	
45. Deductions for (a) 17% O/S retained	867.73
(b) as per measurement sheet	
46. Deductions for (a) 17% O/S retained	867.73
(b) as per measurement sheet	
47. Deductions for (a) 17% O/S retained	867.73
(b) as per measurement sheet	
48. Deductions for (a) 17% O/S retained	867.73
(b) as per measurement sheet	
49. Deductions for (a) 17% O/S retained	867.73
(b) as per measurement sheet	
50. Deductions for (a) 17% O/S retained	867.73
(b) as per measurement sheet	
51. Deductions for (a) 17% O/S retained	867.73
(b) as per measurement sheet	
52. Deductions for (a) 17% O/S retained	867.73
(b) as per measurement sheet	
53. Deductions for (a) 17% O/S retained	867.73
(b) as per measurement sheet	
54. Deductions for (a) 17% O/S retained	867.73
(b) as per measurement sheet	
55. Deductions for (a) 17% O/S retained	867.73
(b) as per measurement sheet	
56. Deductions for (a) 17% O/S retained	867.73
(b) as per measurement sheet	
57. Deductions for (a) 17% O/S retained	867.73
(b) as per measurement sheet	
58. Deductions for (a) 17% O/S retained	867.73
(b) as per measurement sheet	
59. Deductions for (a) 17% O/S retained	867.73
(b) as per measurement sheet	
60. Deductions for (a) 17% O/S retained	867.73
(b) as per measurement sheet	
61. Deductions for (a) 17% O/S retained	867.73
(b) as per measurement sheet	
62. Deductions for (a) 17% O/S retained	867.73
(b) as per measurement sheet	
63. Deductions for (a) 17% O/S retained	867.73
(b) as per measurement sheet	
64. Deductions for (a) 17% O/S retained	867.73
(b) as per measurement sheet	
65. Deductions for (a) 17% O/S retained	867.73
(b) as per measurement sheet	
66. Deductions for (a) 17% O/S retained	867.73
(b) as per measurement sheet	
67. Deductions for (a) 17% O/S retained	867.73
(b) as per measurement sheet	
68. Deductions for (a) 17% O/S retained	867.73
(b) as per measurement sheet	
69. Deductions for (a) 17% O/S retained	867.73
(b) as per measurement sheet	
70. Deductions for (a) 17% O/S retained	867.73
(b) as per measurement sheet	
71. Deductions for (a) 17% O/S retained	867.73
(b) as per measurement sheet	
72. Deductions for (a) 17% O/S retained	867.73
(b) as per measurement sheet	
73. Deductions for (a) 17% O/S retained	867.73
(b) as per measurement sheet	
74. Deductions for (a) 17% O/S retained	867.73
(b) as per measurement sheet	
75. Deductions for (a) 17% O/S retained	867.73
(b) as per measurement sheet	
76. Deductions for (a) 17% O/S retained	867.73
(b) as per measurement sheet	
77. Deductions for (a) 17% O/S retained	867.73
(b) as per measurement sheet	
78. Deductions for (a) 17% O/S retained	867.73
(b) as per measurement sheet	
79. Deductions for (a) 17% O/S retained	867.73
(b) as per measurement sheet	
80. Deductions for (a) 17% O/S retained	867.73
(b) as per measurement sheet	
81. Deductions for (a) 17% O/S retained	867.73
(b) as per measurement sheet	
82. Deductions for (a) 17% O/S retained	867.73
(b) as per measurement sheet	
83. Deductions for (a) 17% O/S retained	867.73
(b) as per measurement sheet	
84. Deductions for (a) 17% O/S retained	867.73
(b) as per measurement sheet	
85. Deductions for (a) 17% O/S retained	867.73
(b) as per measurement sheet	
86. Deductions for (a) 17% O/S retained	867.73
(b) as per measurement sheet	
87. Deductions for (a) 17% O/S retained	867.73
(b) as per measurement sheet	
88. Deductions for (a) 17% O/S retained	867.73
(b) as per measurement sheet	
89. Deductions for (a) 17% O/S retained	867.73
(b) as per measurement sheet	
90. Deductions for (a) 17% O/S retained	867.73
(b) as per measurement sheet	
91. Deductions for (a) 17% O/S retained	867.73
(b) as per measurement sheet	
92. Deductions for (a) 17% O/S retained	867.73
(b) as per measurement sheet	
93. Deductions for (a) 17% O/S retained	867.73
(b) as per measurement sheet	
94. Deductions for (a) 17% O/S retained	867.73
(b) as per measurement sheet	
95. Deductions for (a) 17% O/S retained	867.73
(b) as per measurement sheet	
96. Deductions for (a) 17% O/S retained	867.73
(b) as per measurement sheet	
97. Deductions for (a) 17% O/S retained	867.73
(b) as per measurement sheet	
98. Deductions for (a) 17% O/S retained	867.73
(b) as per measurement sheet	
99. Deductions for (a) 17% O/S retained	867.73
(b) as per measurement sheet	
100. Deductions for (a) 17% O/S retained	867.73
(b) as per measurement sheet	

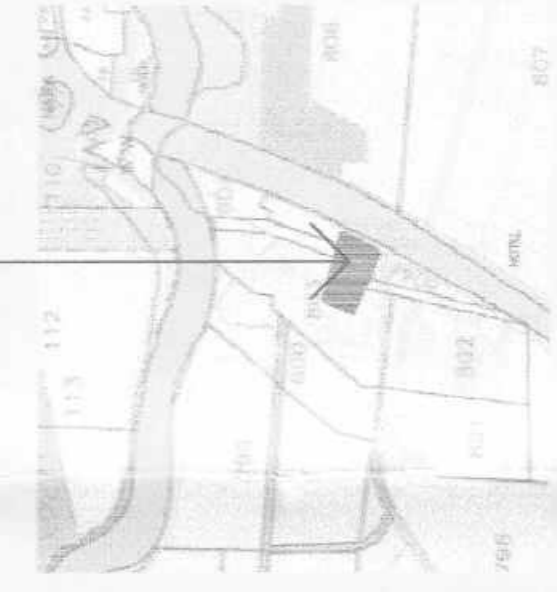
NOTE: AS PER APPROVED LAYOUT LETTER NO. AM/AM/14/2020 DATED: 24/01/2020

S. NO. / PLOT NO.	MINIMUM PLOT AREA (IN SQ.M.)	PERMISSIBLE BUIP AREA (IN SQ.M.)	PERMISSIBLE LE FSI	PERMISSIBLE D+B X C
804/B	4865.28 SQ.M.	5627.73 SQ.M.	1.10	6190.50 SQ.M.
803/27+28/A/B/1	4865.28 SQ.M.	5627.73 SQ.M.	1.10	6190.50 SQ.M.
TOTAL	9730.56 SQ.M.	11255.46 SQ.M.	2.20	12381.00 SQ.M.

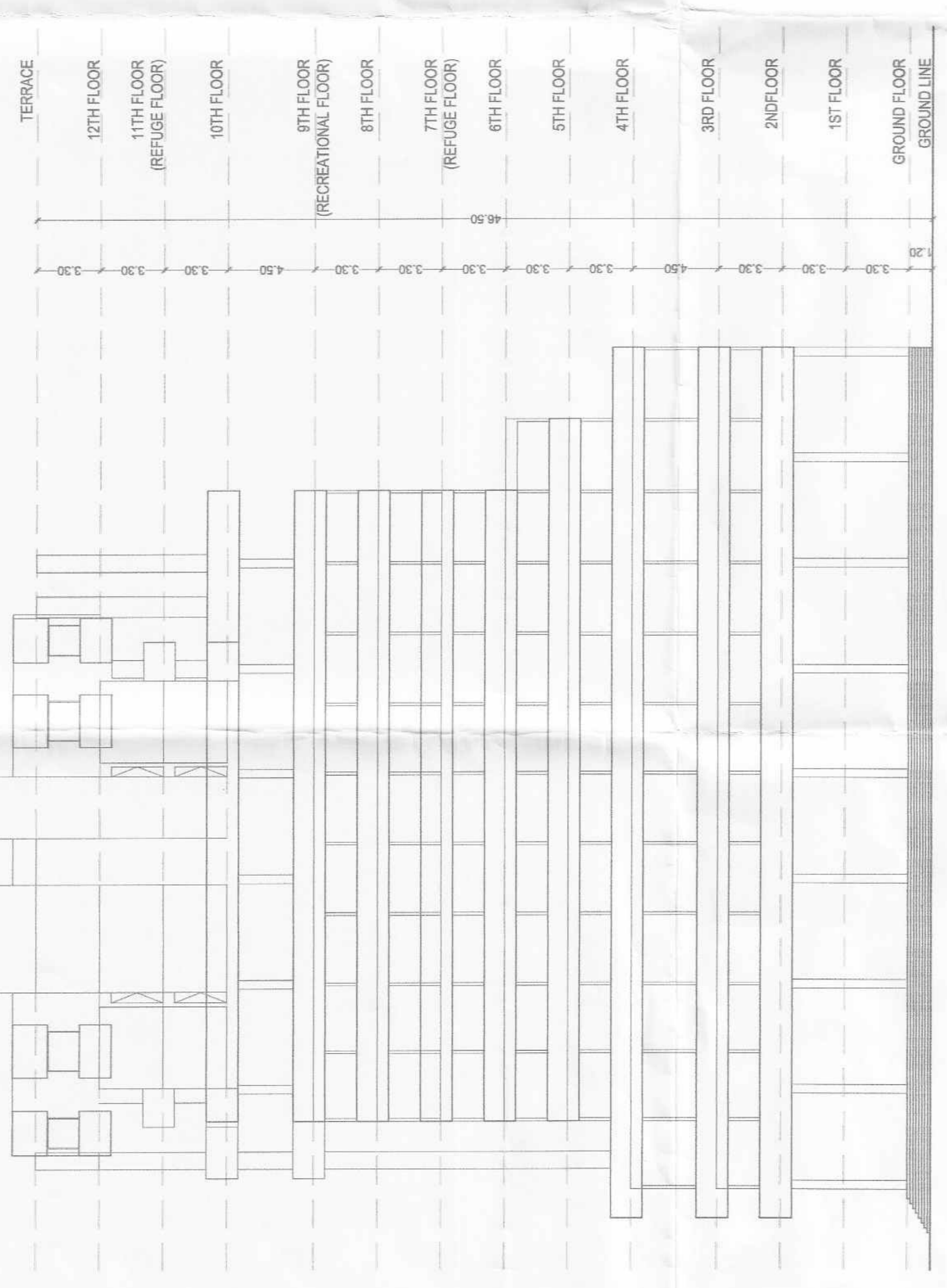
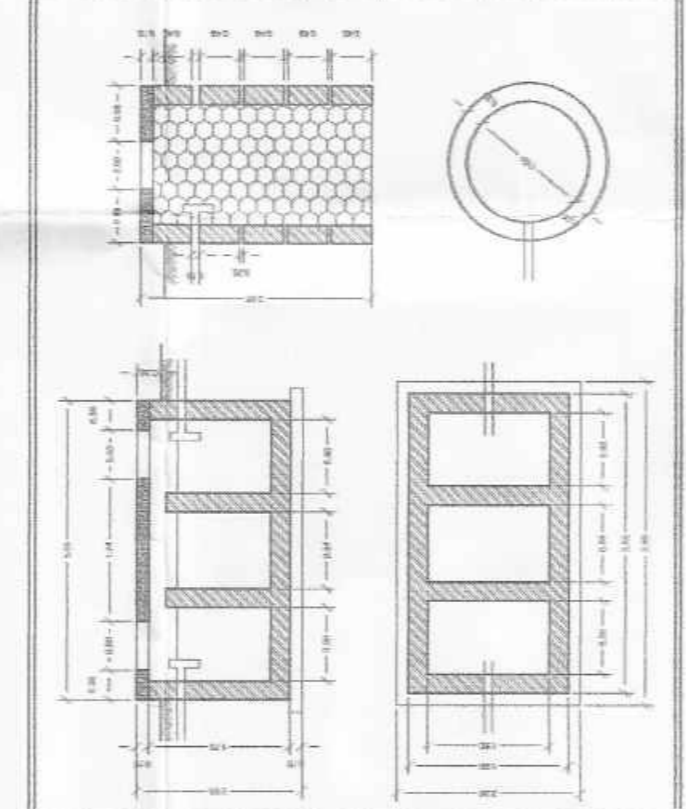
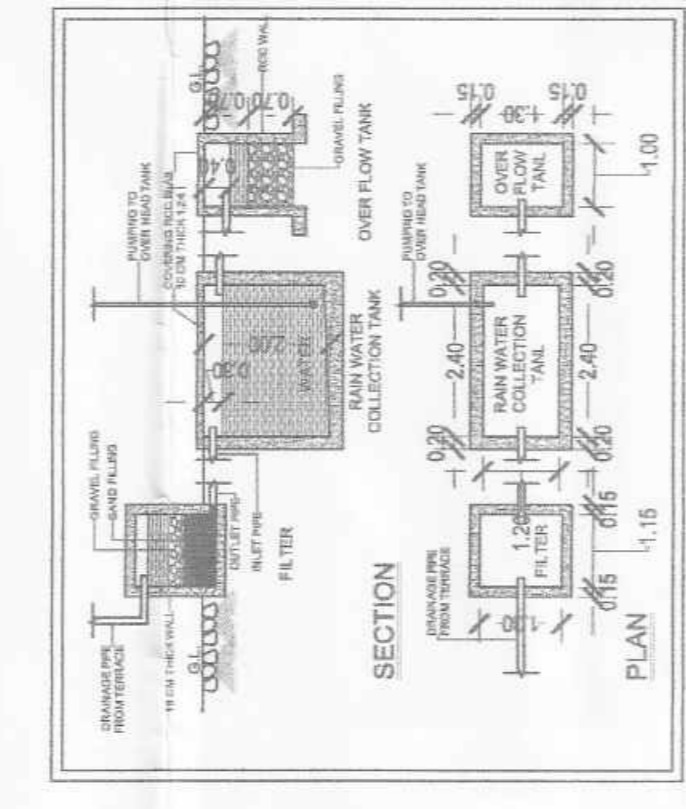
ADDITIONAL 32.81 SQ.M. FSI AGAINST ROAD WIDENING OF 7.50 M ROAD TO 8.00 M ROAD.

PERMISSIBLE TOTAL BUIP AREA = 6190.50 + 32.81 = 6223.31 SQ.M.

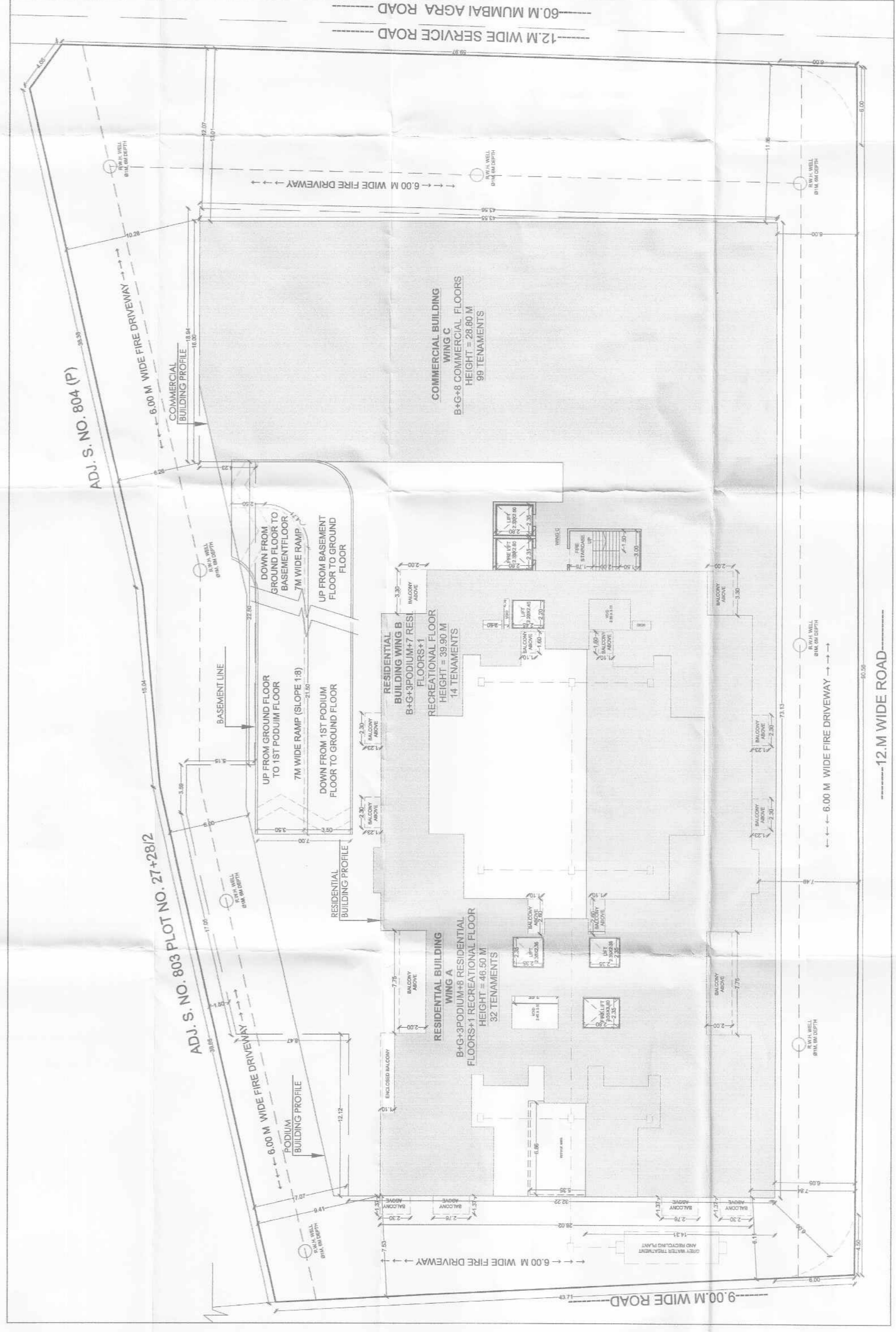
PORPOSED SITE



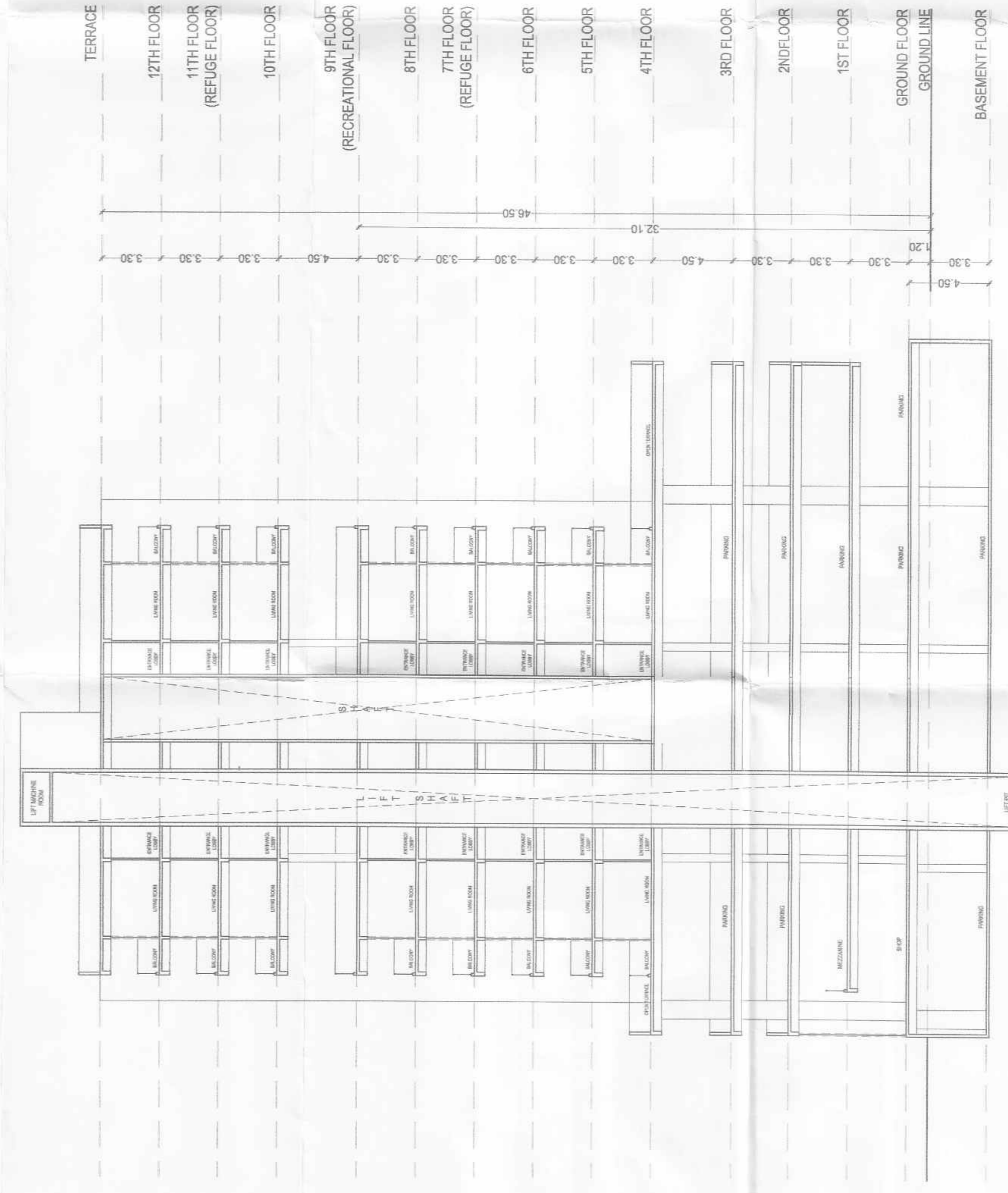
LOCATION PLAN (SCALE 1:10000)



SIDE (EAST) ELEVATION (SCALE 1:200)



SITE PLAN (SCALE 1:200)



SECTION BB (SCALE 1:200)

FORM OF STATEMENT

BUILDING TYPE	FLOOR	AREA (SQ.M.)	PERMISSIBLE BUIP AREA (SQ.M.)	PERMISSIBLE LE FSI	PERMISSIBLE D+B X C
COMMERCIAL (WING C)	GROUND	1235.40	688.76	688.76	711.01
	1ST	918.71	510.39	510.39	408.32
	2ND	918.71	510.39	510.39	408.32
	3RD	918.71	510.39	510.39	408.32
	4TH	918.71	510.39	510.39	408.32
	5TH	918.71	510.39	510.39	408.32
	6TH	918.71	510.39	510.39	408.32
RESIDENTIAL (WING A+WING B)	GROUND + AMENITIES	134.48	84.05	84.05	50.43
	4TH	834.40	521.50	521.50	312.90
	6TH	834.40	521.50	521.50	312.90
	8TH	834.40	521.50	521.50	312.90
RESIDENTIAL (WING A)	10TH	834.40	521.50	521.50	312.90
	11TH	834.40	521.50	521.50	312.90
	12TH (REFUGE)	692.83	414.27	414.27	248.56
TOTAL	14826.99	8698.20	8698.20	6128.79	

AREA STATEMENT

Area	Value (sq.m.)
1. Area of plot as per ground basis (4552.26X11500)	5227.73
(Minimum dimensions to be considered)	515.64
2. Deductions for (a) 17% O/S retained	867.73
(b) as per measurement sheet	
3. Deductions for (a) 17% O/S retained	867.73
(b) as per measurement sheet	
4. Deductions for (a) 17% O/S retained	867.73
(b) as per measurement sheet	
5. Deductions for (a) 17% O/S retained	867.73
(b) as per measurement sheet	
6. Deductions for (a) 17% O/S retained	867.73
(b) as per measurement sheet	
7. Deductions for (a) 17% O/S retained	867.73
(b) as per measurement sheet	
8. Deductions for (a) 17% O/S retained	867.73
(b) as per measurement sheet	
9. Deductions for (a) 17% O/S retained	867.73
(b) as per measurement sheet	
10. Deductions for (a) 17% O/S retained	867.73
(b) as per measurement sheet	
11. Deductions for (a) 17% O/S retained	867.73
(b) as per measurement sheet	
12. Deductions for (a) 17% O/S retained	867.73
(b) as per measurement sheet	
13. Deductions for (a) 17% O/S retained	867.73
(b) as per measurement sheet	
14. Deductions for (a) 17% O/S retained	867.73
(b) as per measurement sheet	
15. Deductions for (a) 17% O/S retained	867.73
(b) as per measurement sheet	
16. Deductions for (a) 17% O/S retained	867.73
(b) as per measurement sheet	
17. Deductions for (a) 17% O/S retained	867.73
(b) as per measurement sheet	
18. Deductions for (a) 17% O/S retained	867.73
(b) as per measurement sheet	
19. Deductions for (a) 17% O/S retained	867.73
(b) as per measurement sheet	
20. Deductions for (a) 17% O/S retained	867.73
(b) as per measurement sheet	
21. Deductions for (a) 17% O/S retained	867.73
(b) as per measurement sheet	
22. Deductions for (a) 17% O/S retained	867.73
(b) as per measurement sheet	
23. Deductions for (a) 17% O/S retained	867.73
(b) as per measurement sheet	
24. Deductions for (a) 17% O/S retained	867.73
(b) as per measurement sheet	
25. Deductions for (a) 17% O/S retained	867.73
(b) as per measurement sheet	
26. Deductions for (a) 17% O/S retained	867.73
(b) as per measurement sheet	
27. Deductions for (a) 17% O/S retained	867.73
(b) as per measurement sheet	
28. Deductions for (a) 17% O/S retained	867.73
(b) as per	