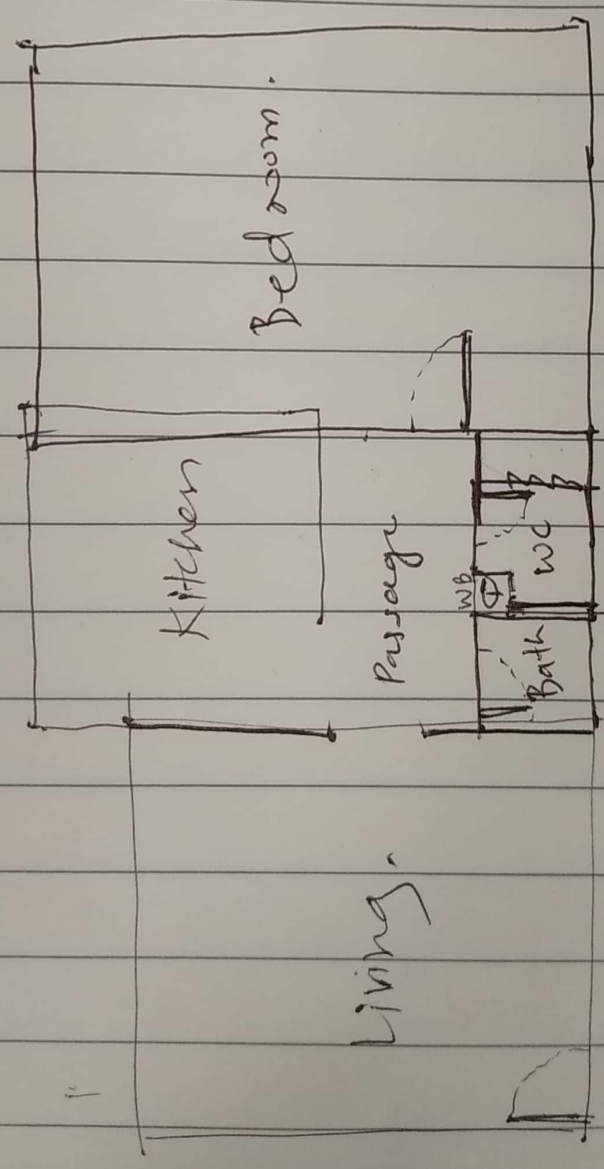


Drawing by Meetal Rasal
& measurement
29-09-2023



Living - $4.32 \times 2.9 \text{ m} = 12.5$
Kitchen - $2.5 \times 2.37 = 5.92$
Bath - $1.8 \times 1.23 = 2.21$
WC - $1.2 \times 0.98 = 1.17$
Bedroom - $3.75 \times 2.92 = 10.87$
Passage - $0.95 \times 2.52 = 2.39$

Total area
= 35.064 sq.m.
= 377.42 sq.ft.
~~WC deduct~~

Date: / /