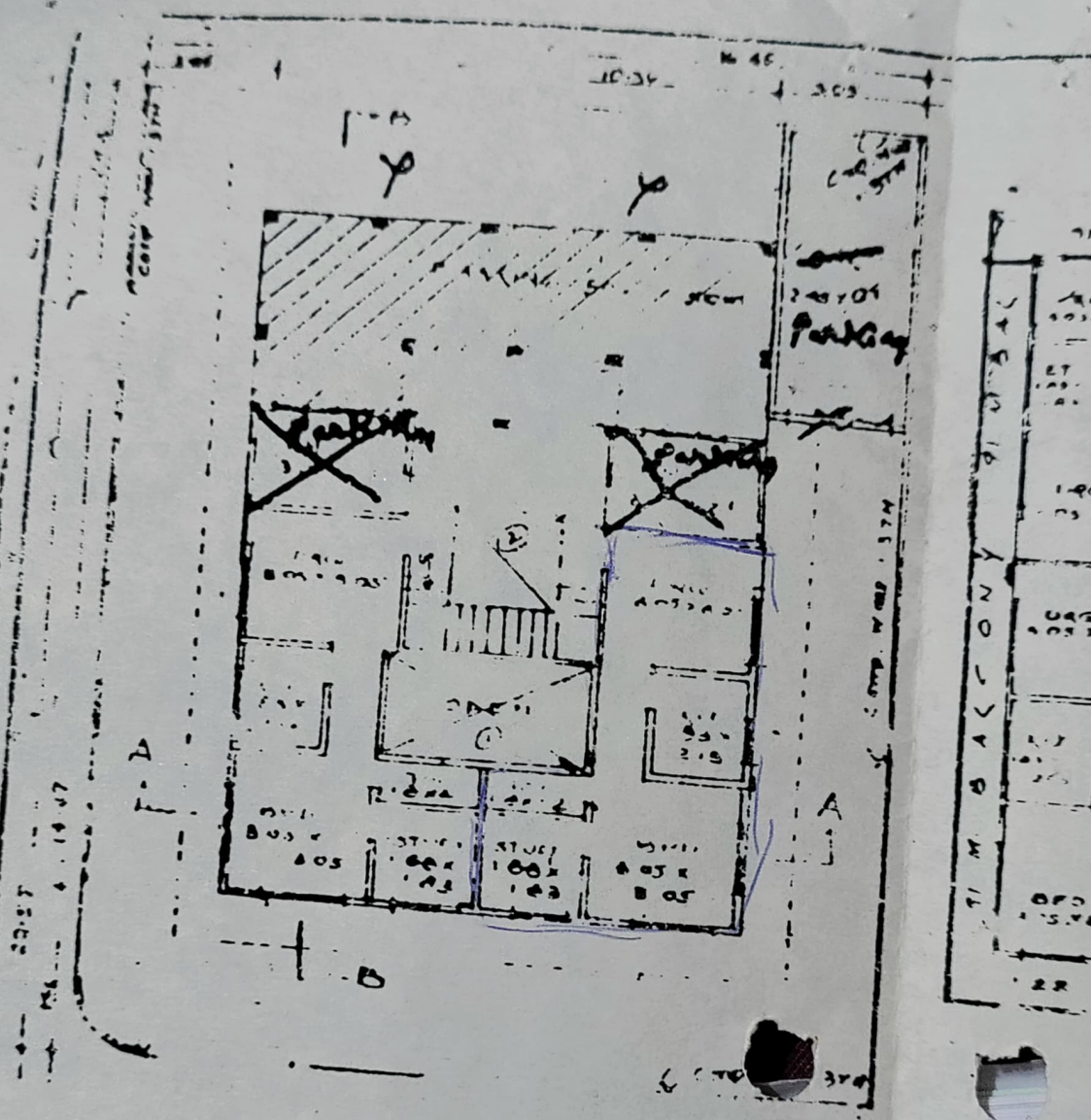


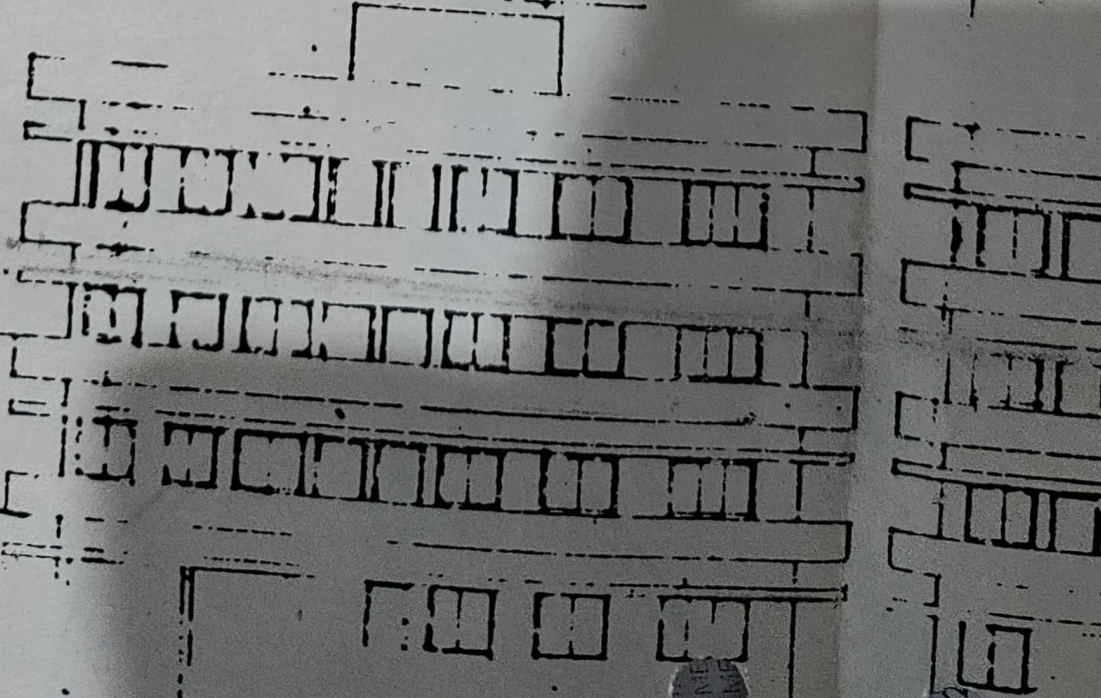
PROPOSED PLAN OF PNO. 16 AT
 VIDHYA NAGAR INDORE
 B-10 MANJOTI GRAH NIRMAN
 SAHAKARI SANTHA HARJEN

SCALE 1:300

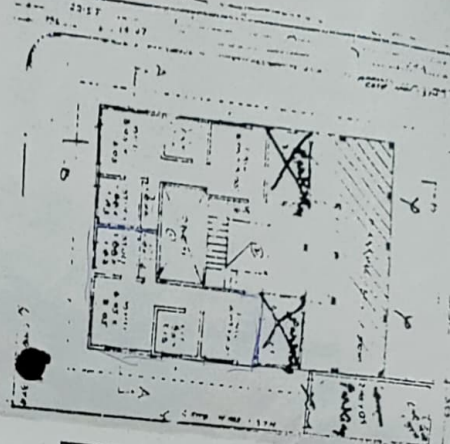
Architectural details and notes for the upper floors, including room labels and structural annotations.



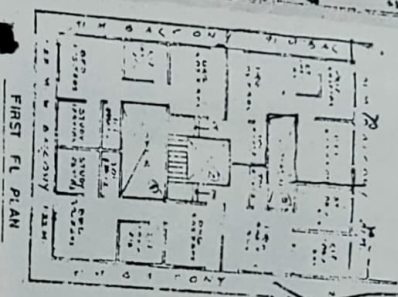
GROUND FL. PLAN



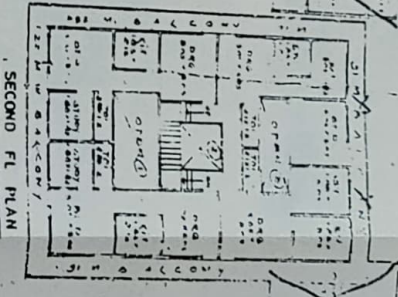
4
 10/11/1954
 10/11/1954
 10/11/1954



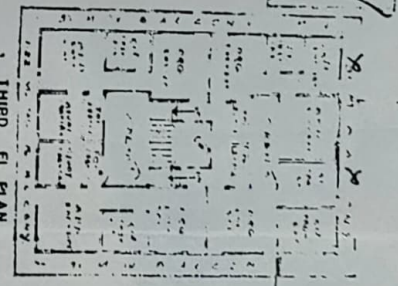
GROUND FL. PLAN



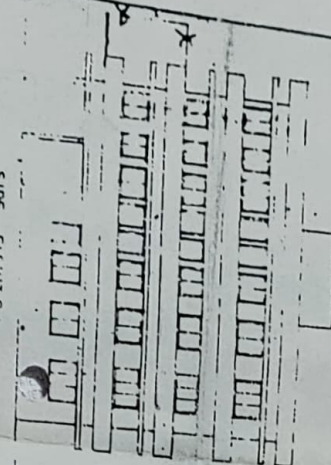
FIRST FL. PLAN



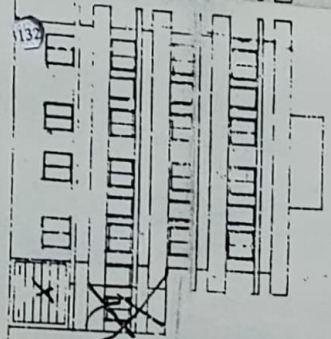
SECOND FL. PLAN



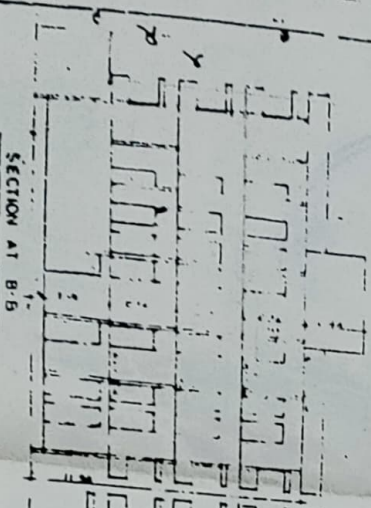
THIRD FL. PLAN



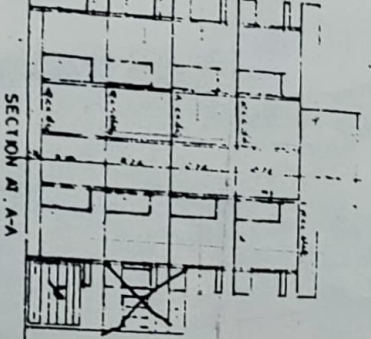
SIDE ELEVATION



FRONT ELEVATION



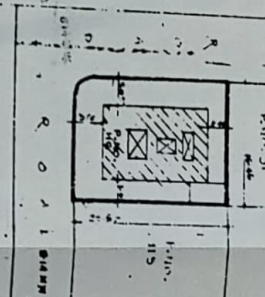
SECTION AT B-B



SECTION AT A-A

AREA STATEMENT

PLOT AREA - 1448.00 SQ. M.
 P.F. NO. 115 - 115/1
 P.F. NO. 115 - 115/2
 P.F. NO. 115 - 115/3
 P.F. NO. 115 - 115/4
 P.F. NO. 115 - 115/5
 P.F. NO. 115 - 115/6
 P.F. NO. 115 - 115/7
 P.F. NO. 115 - 115/8
 P.F. NO. 115 - 115/9
 P.F. NO. 115 - 115/10
 P.F. NO. 115 - 115/11
 P.F. NO. 115 - 115/12
 P.F. NO. 115 - 115/13
 P.F. NO. 115 - 115/14
 P.F. NO. 115 - 115/15
 P.F. NO. 115 - 115/16
 P.F. NO. 115 - 115/17
 P.F. NO. 115 - 115/18
 P.F. NO. 115 - 115/19
 P.F. NO. 115 - 115/20
 P.F. NO. 115 - 115/21
 P.F. NO. 115 - 115/22
 P.F. NO. 115 - 115/23
 P.F. NO. 115 - 115/24
 P.F. NO. 115 - 115/25
 P.F. NO. 115 - 115/26
 P.F. NO. 115 - 115/27
 P.F. NO. 115 - 115/28
 P.F. NO. 115 - 115/29
 P.F. NO. 115 - 115/30
 P.F. NO. 115 - 115/31
 P.F. NO. 115 - 115/32
 P.F. NO. 115 - 115/33
 P.F. NO. 115 - 115/34
 P.F. NO. 115 - 115/35
 P.F. NO. 115 - 115/36
 P.F. NO. 115 - 115/37
 P.F. NO. 115 - 115/38
 P.F. NO. 115 - 115/39
 P.F. NO. 115 - 115/40
 P.F. NO. 115 - 115/41
 P.F. NO. 115 - 115/42
 P.F. NO. 115 - 115/43
 P.F. NO. 115 - 115/44
 P.F. NO. 115 - 115/45
 P.F. NO. 115 - 115/46
 P.F. NO. 115 - 115/47
 P.F. NO. 115 - 115/48
 P.F. NO. 115 - 115/49
 P.F. NO. 115 - 115/50
 P.F. NO. 115 - 115/51
 P.F. NO. 115 - 115/52
 P.F. NO. 115 - 115/53
 P.F. NO. 115 - 115/54
 P.F. NO. 115 - 115/55
 P.F. NO. 115 - 115/56
 P.F. NO. 115 - 115/57
 P.F. NO. 115 - 115/58
 P.F. NO. 115 - 115/59
 P.F. NO. 115 - 115/60
 P.F. NO. 115 - 115/61
 P.F. NO. 115 - 115/62
 P.F. NO. 115 - 115/63
 P.F. NO. 115 - 115/64
 P.F. NO. 115 - 115/65
 P.F. NO. 115 - 115/66
 P.F. NO. 115 - 115/67
 P.F. NO. 115 - 115/68
 P.F. NO. 115 - 115/69
 P.F. NO. 115 - 115/70
 P.F. NO. 115 - 115/71
 P.F. NO. 115 - 115/72
 P.F. NO. 115 - 115/73
 P.F. NO. 115 - 115/74
 P.F. NO. 115 - 115/75
 P.F. NO. 115 - 115/76
 P.F. NO. 115 - 115/77
 P.F. NO. 115 - 115/78
 P.F. NO. 115 - 115/79
 P.F. NO. 115 - 115/80
 P.F. NO. 115 - 115/81
 P.F. NO. 115 - 115/82
 P.F. NO. 115 - 115/83
 P.F. NO. 115 - 115/84
 P.F. NO. 115 - 115/85
 P.F. NO. 115 - 115/86
 P.F. NO. 115 - 115/87
 P.F. NO. 115 - 115/88
 P.F. NO. 115 - 115/89
 P.F. NO. 115 - 115/90
 P.F. NO. 115 - 115/91
 P.F. NO. 115 - 115/92
 P.F. NO. 115 - 115/93
 P.F. NO. 115 - 115/94
 P.F. NO. 115 - 115/95
 P.F. NO. 115 - 115/96
 P.F. NO. 115 - 115/97
 P.F. NO. 115 - 115/98
 P.F. NO. 115 - 115/99
 P.F. NO. 115 - 115/100



SITE PLAN
 SCALE 1:300

PROPOSED PLAN OF PLOT 115 AT
 VIDHYA NAGAR INDORE
 B-TO MANJOTTI GRAM NIRMAL
 SAHAKARI SANTHA HARJOT

BASERA ASSO.
 ARCHT. : S. CHAVAN
 108, PANDHARIPATI NAGAR
 PUNE - 411 004

Date of issue: 10/11/1954
 Date of plan: 10/11/1954
 Date of approval: 10/11/1954

10/11/1954
 10/11/1954
 10/11/1954

AREA STATEMENT

PLOT AREA = $10.46 \times 20.57 = 214.58 \text{ sqm}$

PER A.U. 1/3 = 112.63

PROP B.U. ON G.F.L. = $10.34 \times 14.47 = 149.90$

DEDUCTION - PARKING = 30.62 sqm
 2) = $0.34 \times 4.27 = 1.45$
 1) = $0.67 \times 2.13 = 1.41$

30.88

NET B.U. ON G.F.L. = $149.90 - 30.88 = 119.02$

PROP B.U. ON R.F.L. = $10.34 \times 14.47 = 149.90$

DEDUCTION SPILL DC. BOX $3.13 = 15.41$

2) $0.34 \times 4.27 = 1.45$

3) $1.63 \times 4.27 = 6.96$

TOTAL DEP. 37.27

NET B.U. ON F.F.L. = $149.90 - 37.27 = 112.63$

• S.F.L. = 112.63 m²

• T.F.L. = 112.63

• GROUND = 214.58

PER P.A.R. = 507.07

USE F.A.R. = 106.71