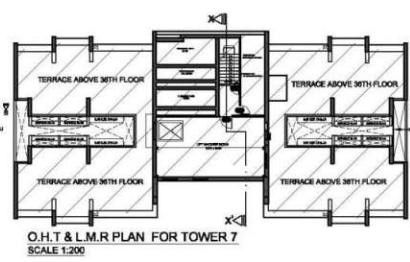
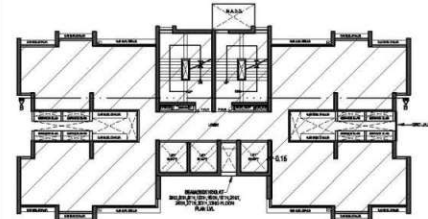


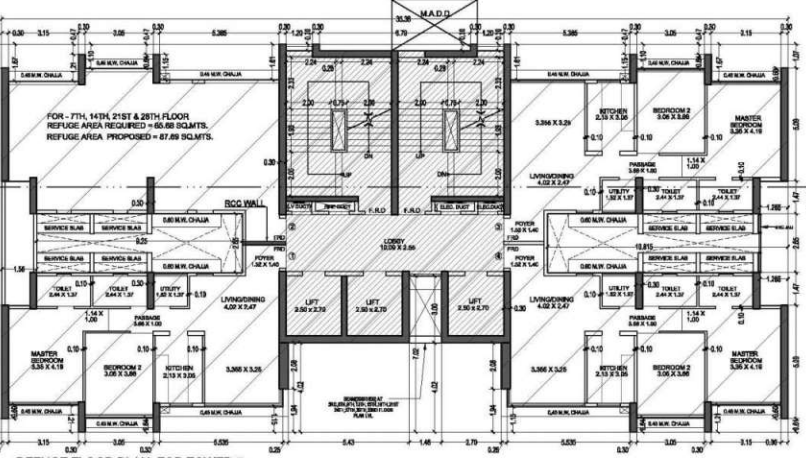
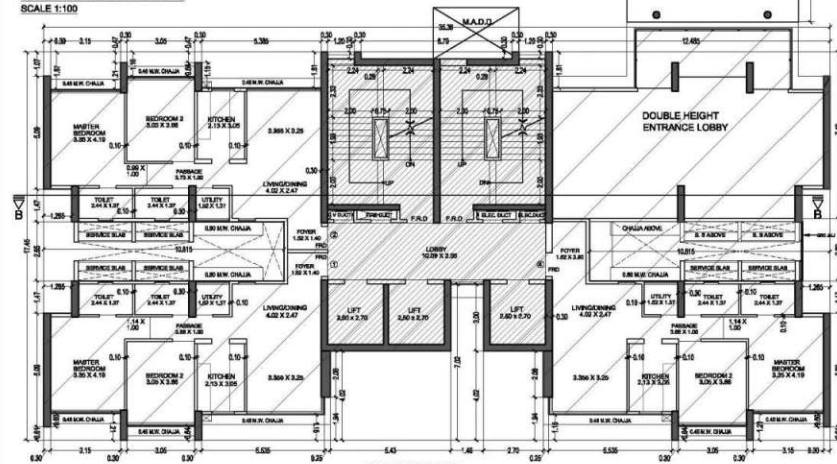
TERRACE FLOOR PLAN FOR TOWER 7  
SCALE 1:200



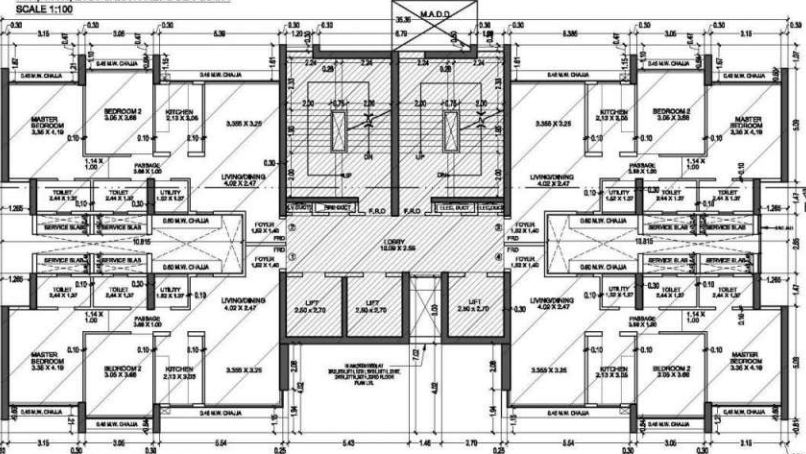
O.H.T. & L.M.R. PLAN FOR TOWER 7  
SCALE 1:200



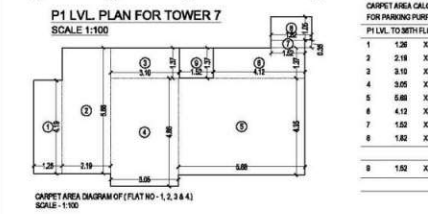
FIRE CHECK FLOOR PLAN FOR TOWER 7  
BETWEEN 20TH & 21ST FLOOR  
SCALE 1:100



REFUGE FLOOR PLAN FOR TOWER 7  
7TH, 14TH, 21ST & 28TH REFUGE FLOOR  
SCALE 1:100



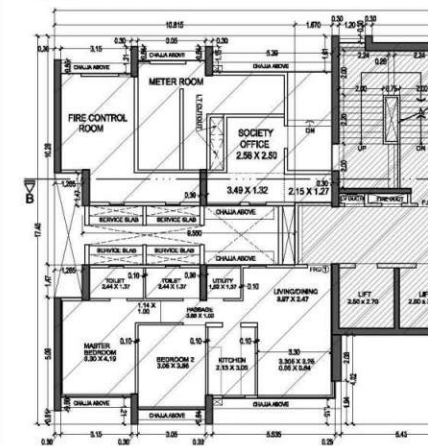
TYPICAL FLOOR PLAN FOR TOWER 7  
1ST TO 6TH, 8TH TO 13TH, 15TH TO 20TH, 22ND TO 27TH,  
29TH TO 34TH FLOOR  
SCALE 1:100



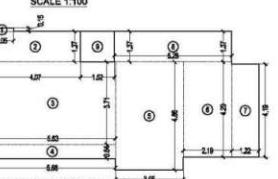
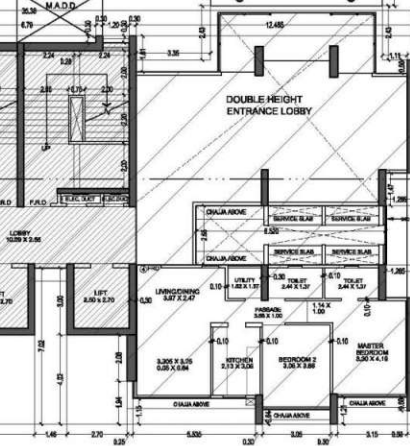
P1 LVL. PLAN FOR TOWER 7  
SCALE 1:100

CARPET AREA CALCULATION FOR PARKING PURPOSE ONLY  
P1 LVL. TO 36TH FLOOR (FLAT NO. - 1, 2, 3 & 4) 142 NOS

1	1.26	X	4.19	X	1.80	=	9.28	SQ.MT.
2	2.18	X	8.86	X	1.80	=	35.96	SQ.MT.
3	2.10	X	1.37	X	1.80	=	4.29	SQ.MT.
4	3.05	X	4.88	X	1.80	=	14.62	SQ.MT.
5	5.88	X	4.35	X	1.80	=	24.78	SQ.MT.
6	4.13	X	1.37	X	1.80	=	5.54	SQ.MT.
7	1.52	X	0.36	X	1.80	=	0.97	SQ.MT.
8	1.82	X	1.95	X	1.80	=	1.91	SQ.MT.
TOTAL ADDITION =							68.88	SQ.MT. X
9	1.52	X	1.37	X	1.80	=	2.98	SQ.MT. X
TOTAL ADDITION =							71.86	SQ.MT. X



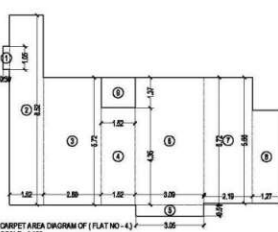
GROUND FLOOR PLAN FOR TOWER 7  
SCALE 1:100



CARPET AREA DIAGRAM OF (FLAT NO. - 1 & 4)  
SCALE: 1:100



CARPET AREA CALCULATION FOR PARKING PURPOSE ONLY  
GROUND FLOOR (FLAT NO. - 1 & 4) 02 NOS



CARPET AREA CALCULATION FOR PARKING PURPOSE ONLY  
P1 LVL. (FLAT NO. - 4)

BUILT UP AREA SUMMARY FOR TOWER - 7

FLOORS	CONSTRUCTED B.U.A. PER FLOOR	LESS STAIRCASE, LIFT, LOBBY PER FLOOR	REFUGE	ADD EXCESS AREA	TOTAL BUILT UP AREA
GROUND FLOOR	287.22	102.98			184.24
P1 LVL. FLR.	267.17	106.86			160.31
1ST FLOOR	442.43	126.13			316.30
2ND FLOOR	442.43	126.13			316.30
3RD FLOOR	442.43	126.13			316.30
4TH FLOOR	442.43	126.13			316.30
5TH FLOOR	442.43	126.13			316.30
6TH FLOOR	442.43	126.13			316.30
7TH FLOOR	442.43	126.13			316.30
8TH FLOOR	442.43	126.13			316.30
9TH FLOOR	442.43	126.13			316.30
10TH FLOOR	442.43	126.13			316.30
11TH FLOOR	442.43	126.13			316.30
12TH FLOOR	442.43	126.13			316.30
13TH FLOOR	442.43	126.13			316.30
14TH FLOOR	442.43	126.13			316.30
15TH FLOOR	442.43	126.13			316.30
16TH FLOOR	442.43	126.13			316.30
17TH FLOOR	442.43	126.13			316.30
18TH FLOOR	442.43	126.13			316.30
19TH FLOOR	442.43	126.13			316.30
20TH FLOOR	442.43	126.13			316.30
21ST FLOOR	442.43	126.13	86.88	0.00	289.28
22ND FLOOR	442.43	126.13			316.30
23RD FLOOR	442.43	126.13			316.30
24TH FLOOR	442.43	126.13			316.30
25TH FLOOR	442.43	126.13			316.30
26TH FLOOR	442.43	126.13			316.30
27TH FLOOR	442.43	126.13			316.30
28TH FLOOR	442.43	126.13			316.30
29TH FLOOR	442.43	126.13			316.30
30TH FLOOR	442.43	126.13			316.30
31TH FLOOR	442.43	126.13			316.30
32ND FLOOR	442.43	126.13			316.30
33RD FLOOR	442.43	126.13			316.30
34TH FLOOR	442.43	126.13			316.30
35TH FLOOR	442.43	126.13			316.30
36TH FLOOR	442.43	126.13			316.30
TOTAL	18821.27	4782.88	373.43	0.00	14068.15

TENEMENT STATEMENT FOR TOWER - 7

FLOOR	TENANT
GROUND FLOOR	02
P1 LVL. FLOOR	03
1ST FLOOR	04
2ND FLOOR	04
3RD FLOOR	04
4TH FLOOR	04
5TH FLOOR	04
6TH FLOOR	04
7TH FLOOR	03
8TH FLOOR	04
9TH FLOOR	04
10TH FLOOR	04
11TH FLOOR	04
12TH FLOOR	04
13TH FLOOR	04
14TH FLOOR	03
15TH FLOOR	04
16TH FLOOR	04
17TH FLOOR	04
18TH FLOOR	04
19TH FLOOR	04
20TH FLOOR	04
21ST FLOOR	03
22ND FLOOR	04
23RD FLOOR	04
24TH FLOOR	04
25TH FLOOR	04
26TH FLOOR	04
27TH FLOOR	04
28TH FLOOR	03
29TH FLOOR	04
30TH FLOOR	04
31TH FLOOR	04
32ND FLOOR	04
33RD FLOOR	04
34TH FLOOR	04
35TH FLOOR	04
36TH FLOOR	04
TOTAL	146



KEY PLAN  
SCALE 1:4000

THIS CANCELS APPROVAL TO THE PREVIOUS PLAN SANCTIONED UNDER NO. CE/1375/BPESIAS/27/147 DATED 03/05/2022

APPROVED SUBJECT TO THE CONDITION MENTIONED IN THIS OFFICE LETTER NO. CE/1375/BPESIAS/27/147

Lotan Sukadeo Ahire  
EXECUTIVE ENGINEER  
BUILDING PROPOSAL (E.S.-II)

Vijay Sapan Pawar  
S.E.(B.P.) SW

JAYESH CHHAGAN DUSANE  
A.E.(B.P.) S/T

Pawar Arneet Ganpatrao  
ARCHITECT/LS  
AMEET PAWAR CA22049484

Parag Purushottam Patil  
OWNER/DEVELOPER

PROFORMA 'B'

CONTENTS OF SHEET  
FLOOR PLAN & CARPET AREA STATEMENT  
BUILT UP AREA SUMMARY, TENEMENT STATEMENT

DESCRIPTION OF PROPOSAL  
PROPOSED RESIDENTIAL BUILDING ON PROPERTY BEARING C.T.S NO 586, 586/1 TO 6, 587, 587/1 TO 7, 588, 588/1 TO 3, 589, 589/1 TO 4, 591, 591, 592, 592/1 TO 9, 593, 594, 595, 595/1 TO 17, 596, 596/1 TO 83, 597, 597/1 TO 31, 597/2 TO 31, 597/3 TO 31, 597/4 TO 31, 597/5 TO 31, 597/6 TO 31, 597/7 TO 31, 597/8 TO 31, 597/9 TO 31, 597/10 TO 31, 597/11 TO 31, 597/12 TO 31, 597/13 TO 31, 597/14 TO 31, 597/15 TO 31, 597/16 TO 31, 597/17 TO 31, 597/18 TO 31, 597/19 TO 31, 597/20 TO 31, 597/21 TO 31, 597/22 TO 31, 597/23 TO 31, 597/24 TO 31, 597/25 TO 31, 597/26 TO 31, 597/27 TO 31, 597/28 TO 31, 597/29 TO 31, 597/30 TO 31, 597/31 TO 31, 597/32 TO 31, 597/33 TO 31, 597/34 TO 31, 597/35 TO 31, 597/36 TO 31, 597/37 TO 31, 597/38 TO 31, 597/39 TO 31, 597/40 TO 31, 597/41 TO 31, 597/42 TO 31, 597/43 TO 31, 597/44 TO 31, 597/45 TO 31, 597/46 TO 31, 597/47 TO 31, 597/48 TO 31, 597/49 TO 31, 597/50 TO 31, 597/51 TO 31, 597/52 TO 31, 597/53 TO 31, 597/54 TO 31, 597/55 TO 31, 597/56 TO 31, 597/57 TO 31, 597/58 TO 31, 597/59 TO 31, 597/60 TO 31, 597/61 TO 31, 597/62 TO 31, 597/63 TO 31, 597/64 TO 31, 597/65 TO 31, 597/66 TO 31, 597/67 TO 31, 597/68 TO 31, 597/69 TO 31, 597/70 TO 31, 597/71 TO 31, 597/72 TO 31, 597/73 TO 31, 597/74 TO 31, 597/75 TO 31, 597/76 TO 31, 597/77 TO 31, 597/78 TO 31, 597/79 TO 31, 597/80 TO 31, 597/81 TO 31, 597/82 TO 31, 597/83 TO 31, 597/84 TO 31, 597/85 TO 31, 597/86 TO 31, 597/87 TO 31, 597/88 TO 31, 597/89 TO 31, 597/90 TO 31, 597/91 TO 31, 597/92 TO 31, 597/93 TO 31, 597/94 TO 31, 597/95 TO 31, 597/96 TO 31, 597/97 TO 31, 597/98 TO 31, 597/99 TO 31, 597/100 TO 31, 597/101 TO 31, 597/102 TO 31, 597/103 TO 31, 597/104 TO 31, 597/105 TO 31, 597/106 TO 31, 597/107 TO 31, 597/108 TO 31, 597/109 TO 31, 597/110 TO 31, 597/111 TO 31, 597/112 TO 31, 597/113 TO 31, 597/114 TO 31, 597/115 TO 31, 597/116 TO 31, 597/117 TO 31, 597/118 TO 31, 597/119 TO 31, 597/120 TO 31, 597/121 TO 31, 597/122 TO 31, 597/123 TO 31, 597/124 TO 31, 597/125 TO 31, 597/126 TO 31, 597/127 TO 31, 597/128 TO 31, 597/129 TO 31, 597/130 TO 31, 597/131 TO 31, 597/132 TO 31, 597/133 TO 31, 597/134 TO 31, 597/135 TO 31, 597/136 TO 31, 597/137 TO 31, 597/138 TO 31, 597/139 TO 31, 597/140 TO 31, 597/141 TO 31, 597/142 TO 31, 597/143 TO 31, 597/144 TO 31, 597/145 TO 31, 597/146 TO 31, 597/147 TO 31, 597/148 TO 31, 597/149 TO 31, 597/150 TO 31, 597/151 TO 31, 597/152 TO 31, 597/153 TO 31, 597/154 TO 31, 597/155 TO 31, 597/156 TO 31, 597/157 TO 31, 597/158 TO 31, 597/159 TO 31, 597/160 TO 31, 597/161 TO 31, 597/162 TO 31, 597/163 TO 31, 597/164 TO 31, 597/165 TO 31, 597/166 TO 31, 597/167 TO 31, 597/168 TO 31, 597/169 TO 31, 597/170 TO 31, 597/171 TO 31, 597/172 TO 31, 597/173 TO 31, 597/174 TO 31, 597/175 TO 31, 597/176 TO 31, 597/177 TO 31, 597/178 TO 31, 597/179 TO 31, 597/180 TO 31, 597/181 TO 31, 597/182 TO 31, 597/183 TO 31, 597/184 TO 31, 597/185 TO 31, 597/186 TO 31, 597/187 TO 31, 597/188 TO 31, 597/189 TO 31, 597/190 TO 31, 597/191 TO 31, 597/192 TO 31, 597/193 TO 31, 597/194 TO 31, 597/195 TO 31, 597/196 TO 31, 597/197 TO 31, 597/198 TO 31, 597/199 TO 31, 597/200 TO 31, 597/201 TO 31, 597/202 TO 31, 597/203 TO 31, 597/204 TO 31, 597/205 TO 31, 597/206 TO 31, 597/207 TO 31, 597/208 TO 31, 597/209 TO 31, 597/210 TO 31, 597/211 TO 31, 597/212 TO 31, 597/213 TO 31, 597/214 TO 31, 597/215 TO 31, 597/216 TO 31, 597/217 TO 31, 597/218 TO 31, 597/219 TO 31, 597/220 TO 31, 597/221 TO 31, 597/222 TO 31, 597/223 TO 31, 597/224 TO 31, 597/225 TO 31, 597/226 TO 31, 597/227 TO 31, 597/228 TO 31, 597/229 TO 31, 597/230 TO 31, 597/231 TO 31, 597/232 TO 31, 597/233 TO 31, 597/234 TO 31, 597/235 TO 31, 597/236 TO 31, 597/237 TO 31, 597/238 TO 31, 597/239 TO 31, 597/240 TO 31, 597/241 TO 31, 597/242 TO 31, 597/243 TO 31, 597/244 TO 31, 597/245 TO 31, 597/246 TO 31, 597/247 TO 31, 597/248 TO 31, 597/249 TO 31, 597/250 TO 31, 597/251 TO 31, 597/252 TO 31, 597/253 TO 31, 597/254 TO 31, 597/255 TO 31, 597/256 TO 31, 597/257 TO 31, 597/258 TO 31, 597/259 TO 31, 597/260 TO 31, 597/261 TO 31, 597/262 TO 31, 597/263 TO 31, 597/264 TO 31, 597/265 TO 31, 597/266 TO 31, 597/267 TO 31, 597/268 TO 31, 597/269 TO 31, 597/270 TO 31, 597/271 TO 31, 597/272 TO 31, 597/273 TO 31, 597/274 TO 31, 597/275 TO 31, 597/276 TO 31, 597/277 TO 31, 597/278 TO 31, 597/279 TO 31, 597/280 TO 31, 597/281 TO 31, 597/282 TO 31, 597/283 TO 31, 597/284 TO 31, 597/285 TO 31, 597/286 TO 31, 597/287 TO 31, 597/288 TO 31, 597/289 TO 31, 597/290 TO 31, 597/291 TO 31, 597/292 TO 31, 597/293 TO 31, 597/294 TO 31, 597/295 TO 31, 597/296 TO 31, 597/297 TO 31, 597/298 TO 31, 597/299 TO 31, 597/300 TO 31, 597/301 TO 31, 597/302 TO 31, 597/303 TO 31, 597/304 TO 31, 597/305 TO 31, 597/306 TO 31, 597/307 TO 31, 597/308 TO 31, 597/309 TO 31, 597/310 TO 31, 597/311 TO 31, 597/312 TO 31, 597/313 TO 31, 597/314 TO 31, 597/315 TO 31, 597/316 TO 31, 597/317 TO 31, 597/318 TO 31, 597/319 TO 31, 597/320 TO 31, 597/321 TO 31, 597/322 TO 31, 597/323 TO 31, 597/324 TO 31, 597/325 TO 31, 597/326 TO 31, 597/327 TO 31, 597/328 TO 31, 597/329 TO 31, 597/330 TO 31, 597/331 TO 31, 597/332 TO 31, 597/333 TO 31, 597/334 TO 31, 597/335 TO 31, 597/336 TO 31, 597/337 TO 31, 597/338 TO 31, 597/339 TO 31, 597/340 TO 31, 597/341 TO 31, 597/342 TO 31, 597/343 TO 31, 597/344 TO 31, 597/345 TO 31, 597/346 TO 31, 597/347 TO 31, 597/348 TO 31, 597/349 TO 31, 597/350 TO 31, 597/351 TO 31, 597/352 TO 31, 597/353 TO 31, 597/354 TO 31, 597/355 TO 31, 597/356 TO 31, 597/357 TO 31, 597/358 TO 31, 597/359 TO 31, 597/360 TO 31, 597/361 TO 31, 597/362 TO 31, 597/363 TO 31, 597/364 TO 31, 597/365 TO 31, 597/366 TO 31, 597/367 TO 31, 597/368 TO 31, 597/369 TO 31, 597/370 TO 31, 597/371 TO 31, 597/372 TO 31, 597/373 TO 31, 597/374 TO 31, 597/375 TO 31, 597/376 TO 31, 597/377 TO 31, 597/378 TO 31, 597/379 TO 31, 597/380 TO 31, 597/381 TO 31, 597/382 TO 31, 597/383 TO 31, 597/384 TO 31, 597/385 TO 31, 597/386 TO 31, 597/387 TO 31, 597/388 TO 31, 597/389 TO 31, 597/390 TO 31, 597/391 TO 31, 597/392 TO 31, 597/393 TO 31, 597/394 TO 31, 597/395 TO 31, 597/396 TO 31, 597/397 TO 31, 597/398 TO 31, 597/399 TO 31, 597/400 TO 31, 597/401 TO 31, 597/402 TO 31, 597/403 TO 31, 597/404 TO 31, 597/405 TO 31, 597/406 TO 31, 597/407 TO 31, 597/408 TO 31, 597/409 TO 31, 597/410 TO 31, 597/411 TO 31, 597/412 TO 31, 597/413 TO 31, 597/414 TO 31, 597/415 TO 31, 597/416 TO 31, 597/417 TO 31, 597/418 TO 31, 597/419 TO 31, 597/420 TO 31, 597/421 TO 31, 597/422 TO 31, 597/423 TO 31, 597/424 TO 31, 597/425 TO 31, 597/426 TO 31, 597/427 TO 31, 597/428 TO 31, 597/429 TO 31, 597/430 TO 31, 597/431 TO 31, 597/432 TO 31, 597/433 TO 31, 597/434 TO 31, 597/435 TO 31, 597/436 TO 31, 597/437 TO 31, 597/438 TO 31, 597/439 TO 31, 597/440 TO 31, 597/441 TO 31, 597/442 TO 31, 597/443 TO 31, 597/444 TO 31, 597/445 TO 31, 597/446 TO 31, 597/447 TO 31, 597/448 TO 31, 597/449 TO 31, 597/450 TO 31, 597/451 TO 31, 597/452 TO 31, 597/453 TO 31, 597/454 TO 31, 597/455 TO 31, 597/456 TO 31, 597/457 TO 31, 597/458 TO 31, 597/459 TO 31, 597/460 TO 31, 597/461 TO 31, 597/462 TO 31, 597/463 TO 31, 597/464 TO 31, 597/465 TO 31, 597/466 TO 31, 597/467 TO 31, 597/468 TO 31, 597/469 TO 31, 597/