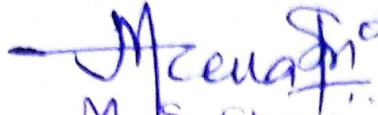
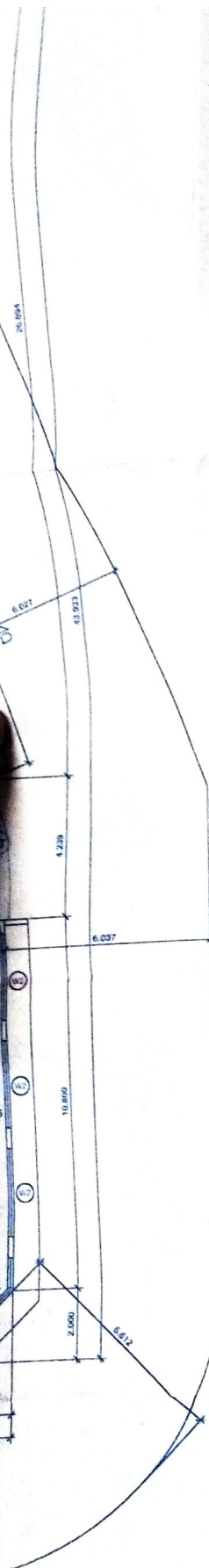


SEAL & STAMP OF APPROVAL

(5)

Certified true copy of
approved plans under Letter
No. CIDCO/EE (BP)/ATPO/87 Dated 02/07/04
For TRIARCH.....


M. S. Chauhan
CA 93/15782



WATER TANK CALCULATIONS

NOS	PER FLAT	TOTAL NO. OF PERSONS	WATER REQD. PER DAY	TOTAL WATER REQD.
81	8	400	200 LTR	80,000 LTR
87	0	300	60 LTR	24,000 LTR
TOTAL				1,04,000 LTR

U/G TANK CAPACITY (60%) = 62,400 LTR + 125,000 LTR FIRE FIGHTING TANKS, SIZE = 6.5X8.5X3.5
 O/H TANK CAPACITY (40%) = 41,600 LTR + 23,000 LTR FIRE FIGHTING TANKS, SIZE = 7.1X3.4X3.5

DUST-BIN CAPACITY CALCULATIONS

TOTAL NOS. OF PERSONS = 700
 CAPACITY REQD. FOR DUST-BIN = 0.5X700 = 350 KG

SUMMARY OF AREA

FLOORS	F.S.I (1)	STAIRCASE AREA(SQM) (2)	GROSS FLOOR AREA(SQM) (3)	PERMISSIBLE BALCONY AREA(SQM) (4)	PROPOSED BALCONY AREA(SQM) (5)	EXCESS BALCONY AREA TAKEN IN F.S.I(SQM) (6)	TOTAL BUILT UP AREA(SQM) (3+5)
GR. FLOOR	230.075	71.185	1514.008	197.806	197.512	---	1309.796
1ST FLOOR (COMM)	230.075	---	717.370	107.806	107.512	---	824.882
1ST FLOOR (RES)	230.075	47.985	278.060	41.709	41.709	---	319.769
2ND FLOOR	230.075	47.985	278.060	41.709	41.709	---	319.769
3RD FLOOR	230.075	47.985	278.060	41.709	41.709	---	319.769
4TH FLOOR	230.075	47.985	278.060	41.709	41.709	---	319.769
5TH FLOOR	230.075	47.985	278.060	41.709	41.709	---	319.769
6TH FLOOR	230.075	47.985	278.060	41.709	41.709	---	319.769
7TH FLOOR	230.075	47.985	278.060	41.709	41.709	---	319.769
8TH FLOOR	230.075	47.985	278.060	41.709	41.709	---	319.769
9TH FLOOR	230.075	47.985	278.060	41.709	41.709	---	319.769
10TH FLOOR	230.075	47.985	278.060	41.709	41.709	---	319.769
11TH FLOOR	230.075	47.985	278.060	41.709	41.709	---	319.769
12TH FLOOR	230.075	47.985	278.060	41.709	41.709	---	319.769
13TH FLOOR	230.075	47.985	278.060	41.709	41.709	---	319.769
14TH FLOOR	230.075	47.985	278.060	41.709	41.709	---	319.769
15TH FLOOR	230.075	47.985	278.060	41.709	41.709	---	319.769
16TH FLOOR	230.075	47.985	278.060	41.709	41.709	---	319.769
17TH FLOOR	230.075	47.985	278.060	41.709	41.709	---	319.769
18TH FLOOR	230.075	47.985	278.060	41.709	41.709	---	319.769
19TH FLOOR	230.075	47.985	278.060	41.709	41.709	---	319.769
20TH FLOOR	230.075	47.985	278.060	41.709	41.709	---	319.769
TOTAL	666.075	1030.885	1514.008	197.806	1123.404	---	824.882

PARKING STATEMENT

	TOTAL NOS OF TENAMENTS	TOTAL NOS OF PARK REQD	TOTAL NOS OF PARK PROVIDED
1. NOS OF TENAMENTS UPTO 45SQM	40	10	10
2. NOS OF TENAMENTS, 60 TO 455SQM	40	20	20
3. COMMERCIAL (1 PARKING PROVIDED FOR 80 SQM AREA)	---	24	24
4. VISITORS PARKING (10% OF TOTAL PARKING PROVIDED)	---	06	06
TOTAL			60

PROJECT

PROPOSED RESIDENTIAL CUM COMMERCIAL BUILDING,
 ON PLOT NO-28, SECTOR-04, KHARGHAR,
 NAVI MUMBAI.

OWNERS / P.A.H.

MANJARI HOME MAKERS PVT.LTD.
 9/10 SWAGAT CHS, PLOT NO. 19, SECTOR-3
 KOPARKHAIRANE, NAVI MUMBAI.

JOB NO.	SCALE	NORTH	DATE
2004/A-458	AS SHOWN		24TH MAY'04.
FILE NAME	DRAWN BY		DRG. NO.
28-4-MUN	DINESH.S		2004/A-458/15B

ARCHITECTS

M.S.CHAUHAN

TRIARCH...
 ARCHITECTS & INTERIOR DESIGNERS
 BHAGAVATI BHUVAN, SARASWATI BAUG
 JOGESHWARI (E), BOMBAY-400 046.
 TEL : 2835 4441, 2832 7661.
 18, GAURI COMPLEX, SECTOR-11, CBD
 NAVI MUMBAI. TEL : 2758 8667, 2759 0870.

Handwritten signature/initials

CHILDRENS PLAYAREA

RECREATIONAL AREA
675.677 SQ.M.(15.682%)

LANDSCAPE GARDEN

LANDSCAPE GARDEN

FOUNTAIN

PAVED PATHWAY

RAMP FOR HANDICAPED

SHOP-01
9.60X3.05

SHOP-02
9.60X3.05

SHOP-03
9.60X3.05

SHOP-04
9.60X3.05

LOFT
2.50X3.05

LOFT
2.50X3.05

LOFT
2.50X3.05

LOFT
2.50X16.01

HALL-01
9.60X15.85

W.C
1.2X1.2

W.C
1.2X1.2

W.C
1.2X1.2

W.C
1.2X1.2

LADIES TOILET

GENTS TOILET

WINDOWS ABOVE TOILET REFER SECTION

SKY LIGHT ABOVE - REFER SECTION C-C

OFFICE-02
3.05X3.65

OFFICE-03
3.05X3.65

OFFICE-04
3.05X3.65

OFFICE-05
3.05X3.75

OFFICE-06
3.05X3.75

OFFICE-07
3.05X4.50

LOFT
3.05X1.50

LOFT
3.05X1.50

LOFT
3.05X1.50

LOFT
3.05X1.50

LOFT
3.05X1.50

LOFT
3.05X1.50

LOFT
1.95X1.60

LOFT
1.95X2.00

LOFT
2.50X13.80

HALL-02
13.35X12.50

E.BAL
2.00X10.55

LOFT
3.05X2.00

LOFT
3.05X2.00

LOFT
3.05X2.00

LOFT
3.05X2.00

LOFT
3.05X2.00

LOFT
3.05X2.00

OFFICE-12
3.05X5.15

OFFICE-11
3.05X5.15

OFFICE-10
3.05X5.15

OFFICE-09
3.05X5.15

OFFICE-08
3.05X5.15

E.BAL
1.70X1.00

E.BAL
1.70X1.00

E.BAL
1.70X1.00

E.BAL
1.70X1.00

E.BAL
1.70X1.00

E.BAL
1.70X1.00

E.BAL
1.70X1.00

E.BAL
1.70X1.00

E.BAL
6.00X2.00

18.005

1.500 1.500

11.700

6.004

1.200

1.200

1.200

1.200

1.200

1.200

1.200

1.200

2.200

2.200

2.200

2.200

2.200

2.200

2.200

2.200

2.200

2.200

2.200

2.200

2.200

2.200

2.200

2.200

2.200

2.200

2.200

21.625

21.625

21.625

21.625

21.625

21.625

21.625

21.625

21.625

21.625

21.625

21.625

21.625

21.625

21.625

21.625

21.625

21.625

21.625

3.800

2.500

3.800

2.500

3.850

3.800

2.500

3.850

3.800

2.500

3.850

3.800

2.500

3.850

3.800

2.500

3.850

3.800

2.500

5.0 M WIDE PASSAGE

3.800

2.500

3.800

2.500

3.800

2.500

3.800

2.500

3.800

2.500

3.800

2.500

3.800

2.500

3.800

2.500

3.800

2.500

3.800

3.800

2.500

3.800

2.500

3.800

2.500

3.800

2.500

3.800

2.500

3.800

2.500

3.800

2.500

3.800

2.500

3.800

2.500

3.800



CHILDRENS PLAYAREA

PAVED PATHWAY

RECREATIONAL AREA
7 SQ.M. (15.682%)

LANDSCAPE GARDEN

FOUNTAIN

RAMP FOR HANDICAPS

LOFT
2.50X3.05

SHOP-01
9.60X3.05

E.BAL
2.00X3.15

SHOP-02
9.60X3.05

E.BAL
2.00X3.15

LOFT
2.50X3.05

SHOP-03
9.60X3.05

E.BAL
2.00X3.15

LOFT
2.50X3.05

SHOP-04
9.60X3.05

E.BAL
2.00X3.15

LOFT
2.50X3.05

LOFT
2.50X16.01

HALL-01
9.60X15.65

E.BAL
2.00X15.70

W.C
1.2X1.2

W.C
1.2X1.2

W.C
1.2X1.2

W.C
1.2X1.2

LADIES TOILET

GENTS TOILET

WINDOWS ABOVE TOILET REFER SECTION

SKY LIGHT ABOVE - REFER SECTION C-C

LOFT
2.50X13.80

HALL-02
13.35X12.50

E.BAL
2.00X10.55

OFFICE-05
3.05X3.75

OFFICE-06
3.05X3.75

OFFICE-07
3.05X4.50

LOFT
3.05X1.50

LOFT
3.05X1.50

LOFT
3.05X1.50

LOFT
3.05X1.50

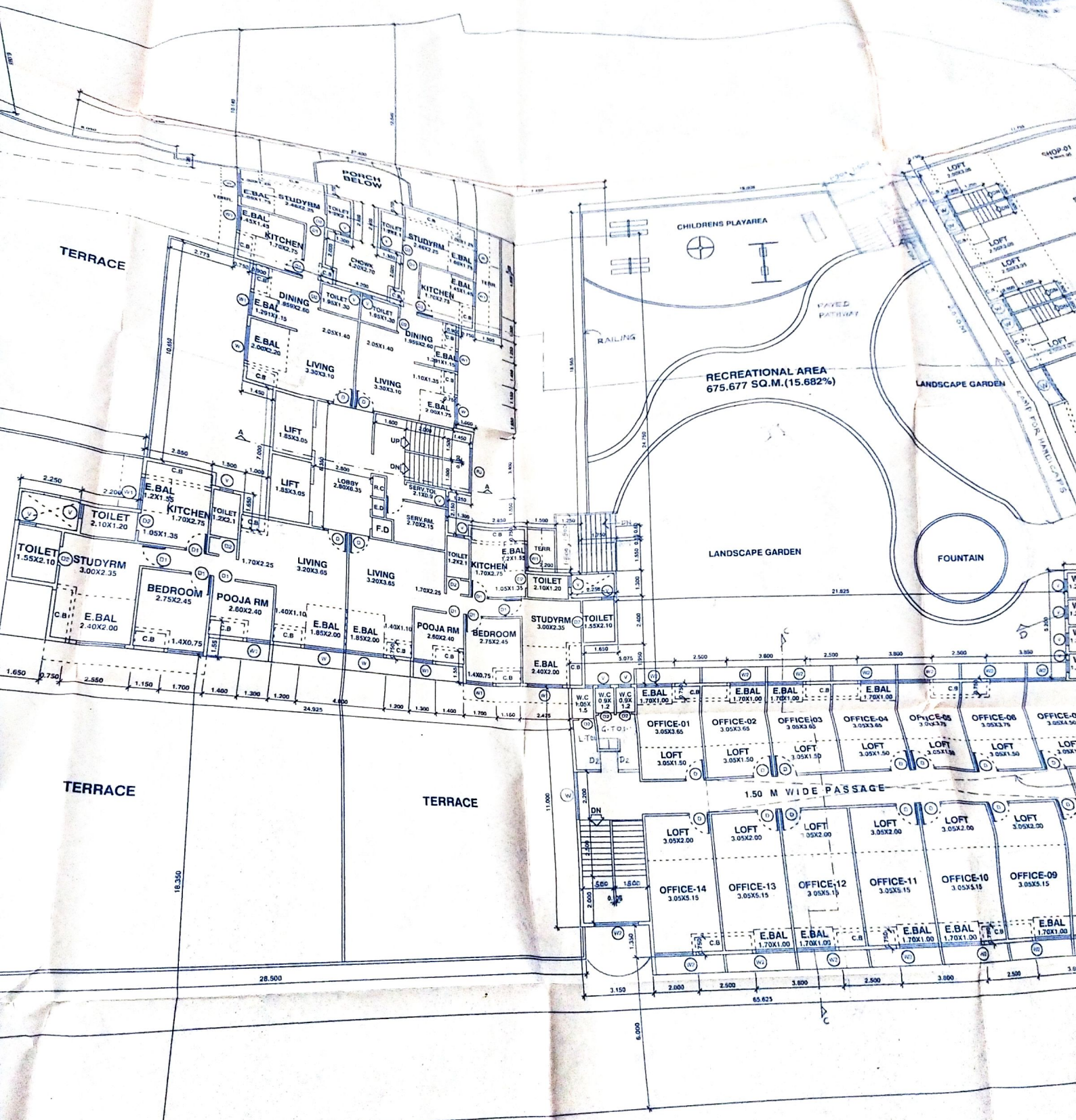
OFFICE-09
3.05X5.15

OFFICE-08
3.05X5.15

E.BAL
1.70X1.00

E.BAL
1.70X1.00

E.BAL
6.00X2.00



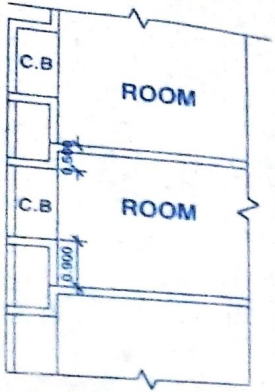
FIRST FLOOR PLAN

SEAL & STAMP OF APPROVAL

3

Certified true copy of approved plans under Letter No. CIDCO/EE (BP)/ATPO/87 dated 42/07/04 For TRIARCH

M. S. Chauhan
M. S. Chauhan
(CA)93/15782



TYPICAL CUP BOARD SECTION

WATER TANK CALCULATIONS

	NOS	PER/FLAT	TOTAL NO. OF PERSONS	WATER REQD/ PER/DAY	TOT WATER
FLAT	80	5	400	200 LTS.	80,000
SHOP	60	5	300	80 LTS.	24,000
TOTAL					1,04,000

U/G TANK CAPACITY (60%) = 62,400 LTS + 125,000 LTS (FIRE FIGHTING TANK), SIZE = 6.5X5.0X5.5
O.H. TANK CAPACITY (40%) = 41,600 LTS + 20,000 LTS (FIRE FIGHTING TANK), SIZE = 7.1X3.4X3.5

DUST-BIN CAPACITY CALCULATIONS

TOTAL NOS. OF PERSONS = 700
CAPACITY REQD. FOR DUST-BIN = $0.5 \times 700 = 350$ KG.